

*Crap & Win!*  
**iPad Pro**  
 Check out our contest!  
[suzuka.com.my/promotion](http://suzuka.com.my/promotion) | T&C Apply

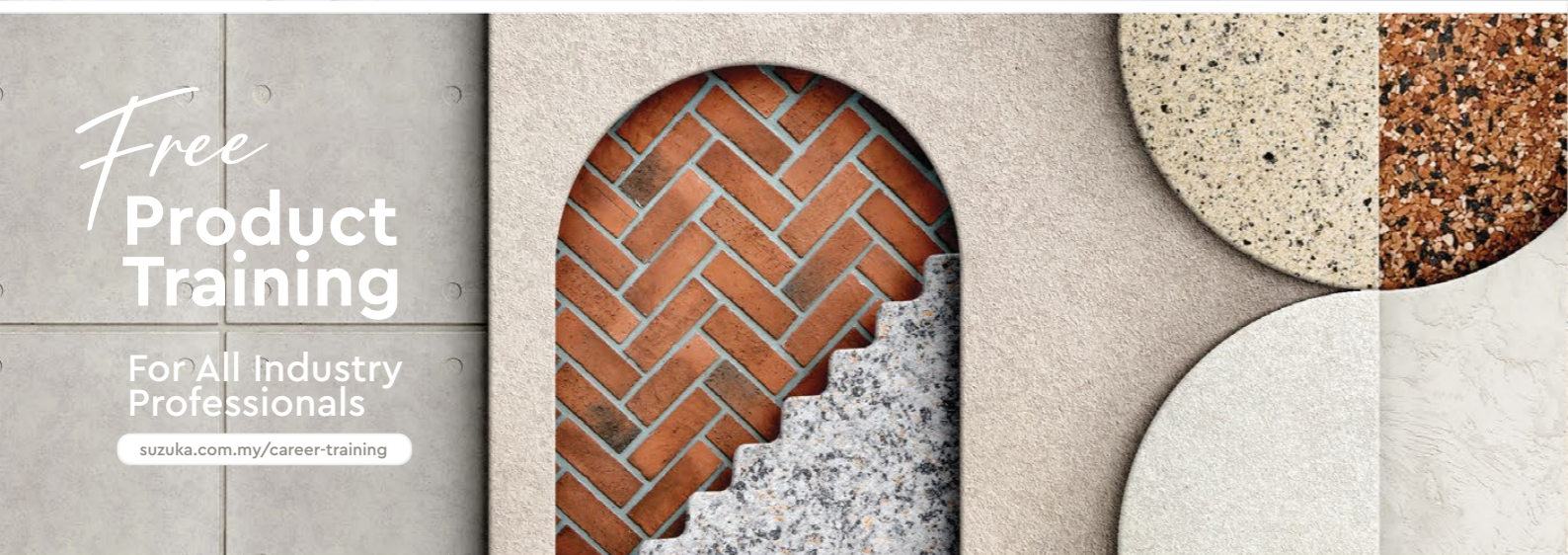


KASTONE®  
**FLEXI**

FABRICATED  
 WALL PANEL

EDITION  
**01**

WALL FINISH  
 PROFESSIONALS.  
 SINCE 1977



*Free*  
**Product Training**  
 For All Industry Professionals  
[suzuka.com.my/career-training](http://suzuka.com.my/career-training)



**suzuka.com.my**  
 suzuka.group +6012-258 7388

**All images included in this catalog are for visual reference only.**  
 Actual product may have a slight color difference due to variations in printing processes or digital viewing settings. **We suggest you examine actual product samples before ordering.**



KASTONE FLEXI-E1-2607

# KASTONE® FLEXI

FABRICATED  
WALL PANEL

**Kastone® Flexi** is a lightweight, flexible, and fabricated wall panel designed for effortless interior installation. Engineered to bend smoothly around curves and columns without cracking, it cuts cleanly with standard tools and glues directly to existing surfaces.

Built for long-term durability, **Kastone® Flexi** is 100% water-resistant, anti-mould, and anti-termite, offering a seamless, low-maintenance upgrade for any residential or commercial interior.



## Features



Lightweight



Ultra Thin  
(3 - 5 mm thickness)



Water  
Resistant



Flexible



Anti-mould



Anti-termite



Easy Installation  
& DIY Friendly



Suitable for  
the Interior

# Corduroy

3 Sizes: 120 X 60 cm • 240 X 60 cm • 240 X 120 cm | Thickness: 3 -5 mm | 1 Colour

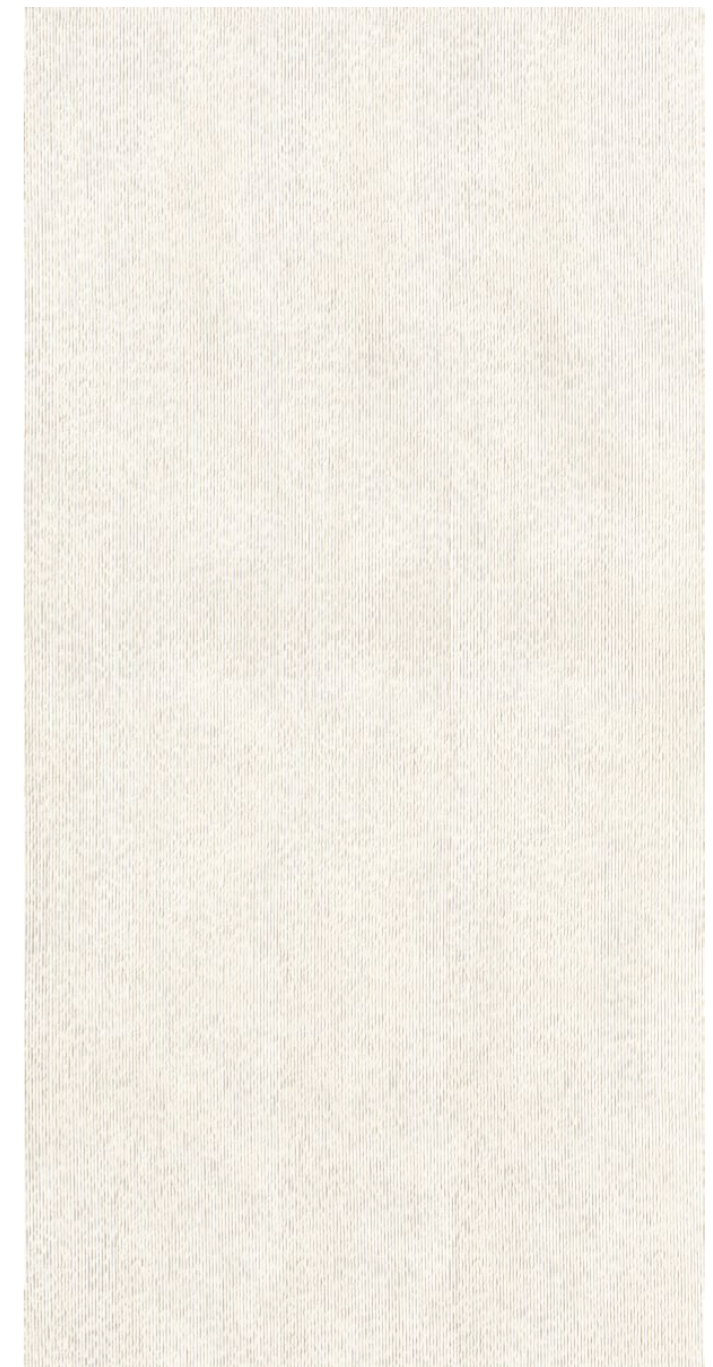
Heron White | 01



**FSC-011**  
120 X 60 cm



**FSC-012**  
240 X 60 cm

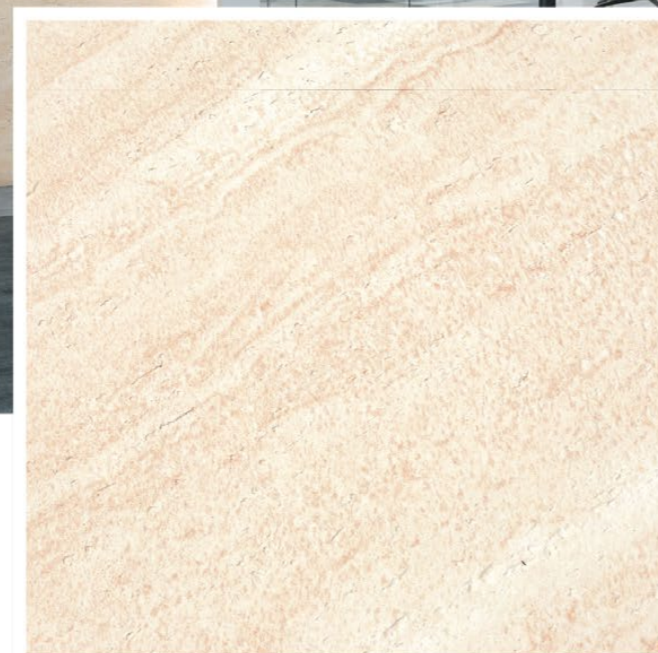


**FSC-014**  
240 X 120 cm

# Travertine

3 Sizes: 120 X 60 cm • 240 X 60 cm • 240 X 120 cm | Thickness: 3 -5 mm | 3 Colours

Ancient Ivory | 01



**FSB-011**  
120 X 60 cm



**FSB-012**  
240 X 60 cm



**FSB-014**  
240 X 120 cm



**FSB-021**  
120 X 60 cm



**FSB-022**  
240 X 60 cm



**FSB-024**  
240 X 120 cm



**FSB-031**  
120 X 60 cm



**FSB-032**  
240 X 60 cm



**FSB-034**  
240 X 120 cm

# Rammed Earth

3 Sizes: 120 X 60 cm • 240 X 60 cm • 240 X 120 cm | Thickness: 3 -5 mm | 4 Colours



Plateau Brown | 01



**FSA-011**  
120 X 60 cm



**FSA-012**  
240 X 60 cm



**FSA-014**  
240 X 120 cm



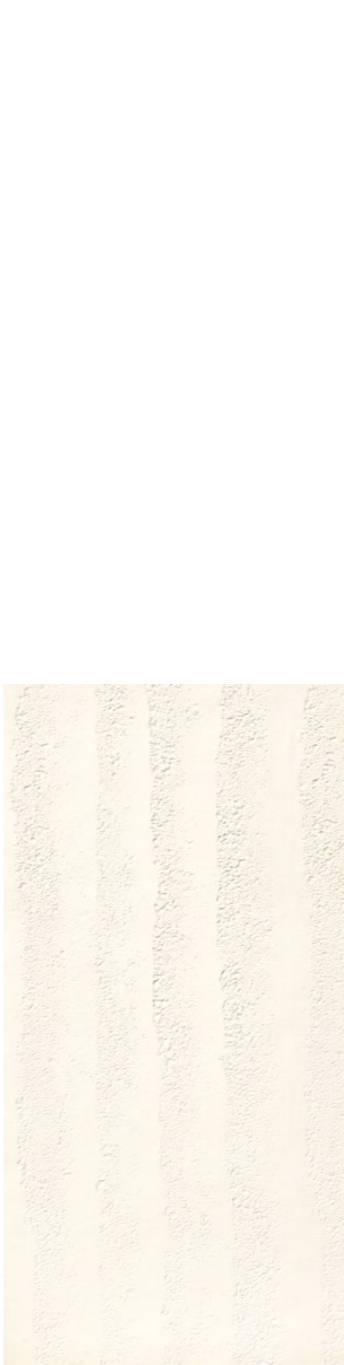
**FSA-021**  
120 X 60 cm



**FSA-022**  
240 X 60 cm



**FSA-024**  
240 X 120 cm



**FSA-031**  
120 X 60 cm



**FSA-032**  
240 X 60 cm



**FSA-034**  
240 X 120 cm



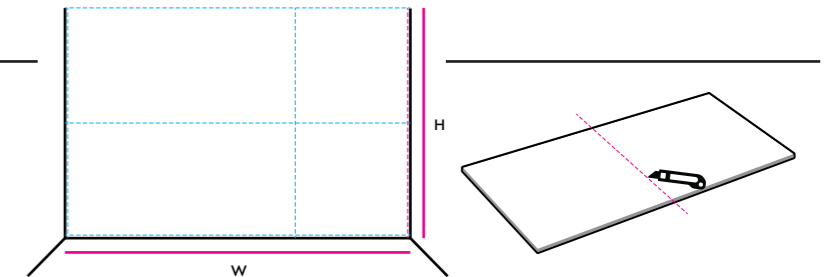
# Installation Instructions

## Surface Preparation

- Surface needs to be dry and free from dirt, oil, and foreign matter.
- Surface unevenness, cracks or any defects shall be repaired & treated.
- To ensure optimal performance, apply **Suzuka® Wall Sealer Pro** to the wall surface prior to panel application.

## Step 1 – Layout Planning

- 1 Measure the dimensions of wall.
- 2 Some panels may need to be trimmed to fit your wall dimensions.
- 3 Arrange the panels to ensure any trimmed edges are concealed from direct view.
- 4 For installation with construction adhesive, it is recommended to outline the panels on the wall first to guide the adhesive placement.



## Step 2 – Adhesive & Panel Application

Substrate Types: **Concrete Wall**

### Tile Adhesive

*C2TES1*

- 1 Application of **sealer** is recommended for **concrete** substrate.
- 2 Mix the adhesive thoroughly, following the packaging instructions.
- 3 Apply **tile adhesive** to the **substrate** using a notched trowel to create a combed effect. Ensure the combed lines are perpendicular to the installation direction of the panel.
- 4 Position the panel on the substrate, firmly pressing and supporting it until it attaches securely.
- 5 Press the panel evenly across the surface using a sponge plastering trowel to expel any trapped air and guarantee a compact, secure bond.

Substrate Types: **Plywood or Metal Wall**

### Construction Adhesive

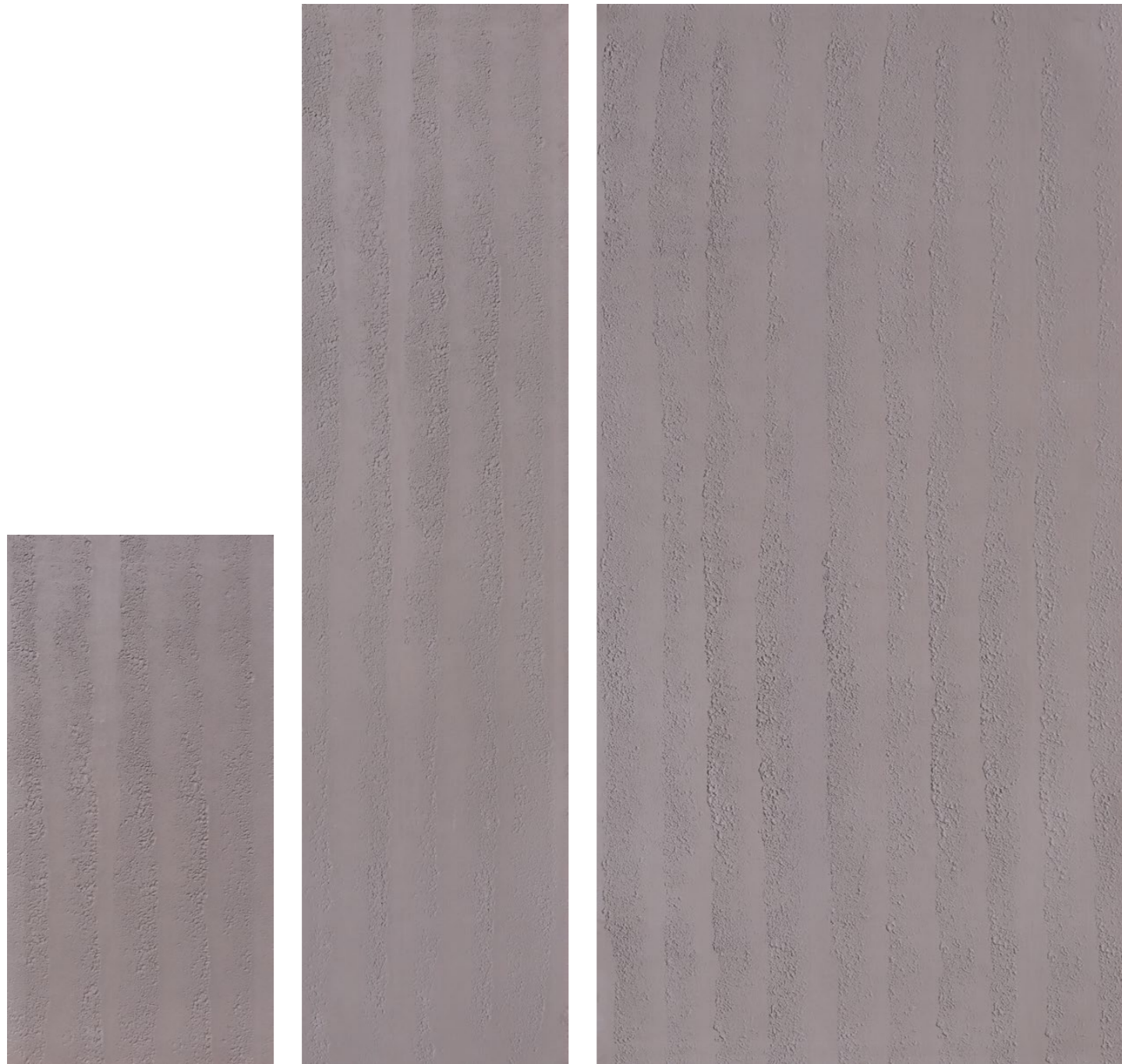
*KASTONE® EASY*

- 1 Application of **sealer** is strongly recommended for **plywood** substrate. For metal substrate, sealer may not be necessary.
- 2 Apply an adequate amount of **construction adhesive**.

**Recommended adhesive application:**

Panel Size 1: Apply to the **back of the panel**.  
 Panel Sizes 2 & 4: Apply to the **substrate**.

- 3 Ensure the adhesive is applied thoroughly along the edges of the panel.
- 4 Additional adhesive may be applied to ensure maximum bonding strength & a faster hold time.
- 5 Install the panel to the wall by pressing and holding it firmly until it attaches securely.
- 6 Attach the panel to the wall as soon as the adhesive is applied to prevent it from drying out before installation.



**FSA-041**  
120 X 60 cm

**FSA-042**  
240 X 60 cm

**FSA-044**  
240 X 120 cm

## TECHNICAL SPECIFICATIONS

| Series                   | FSA - Rammed Earth   FSB - Travertine   FSC - Corduroy |                         |                          |
|--------------------------|--|-------------------------|--------------------------|
| Panel Size               | Size 1   | Size 2                  | Size 4                   |
| Dimension (cm)           | L120 x W60 x T0.3 - 0.5                                | L240 x W60 x T0.3 - 0.5 | L240 x W120 x T0.3 - 0.5 |
| Coverage Per Piece (sqm) | 0.72   | 1.44                    | 2.88                     |
| Weight Per Piece (kg)    | 3.00   | 6.00                    | 12.00                    |

**PACKING** : Packaging methods and specifications may vary based on **order quantity** and **panel dimensions**.

\* Data of weight presented is the maximum weight for every piece respectively.  
 \* Please allow a ± 5% tolerance for panel size, weight and colour.

\* Product may vary in colour due to lighting conditions and printing.  
**We suggest you examine product samples before ordering.**