

Cnap & Win!
iPad Pro

Check out our contest!
suzuka.com.my/promotion | T&C Apply



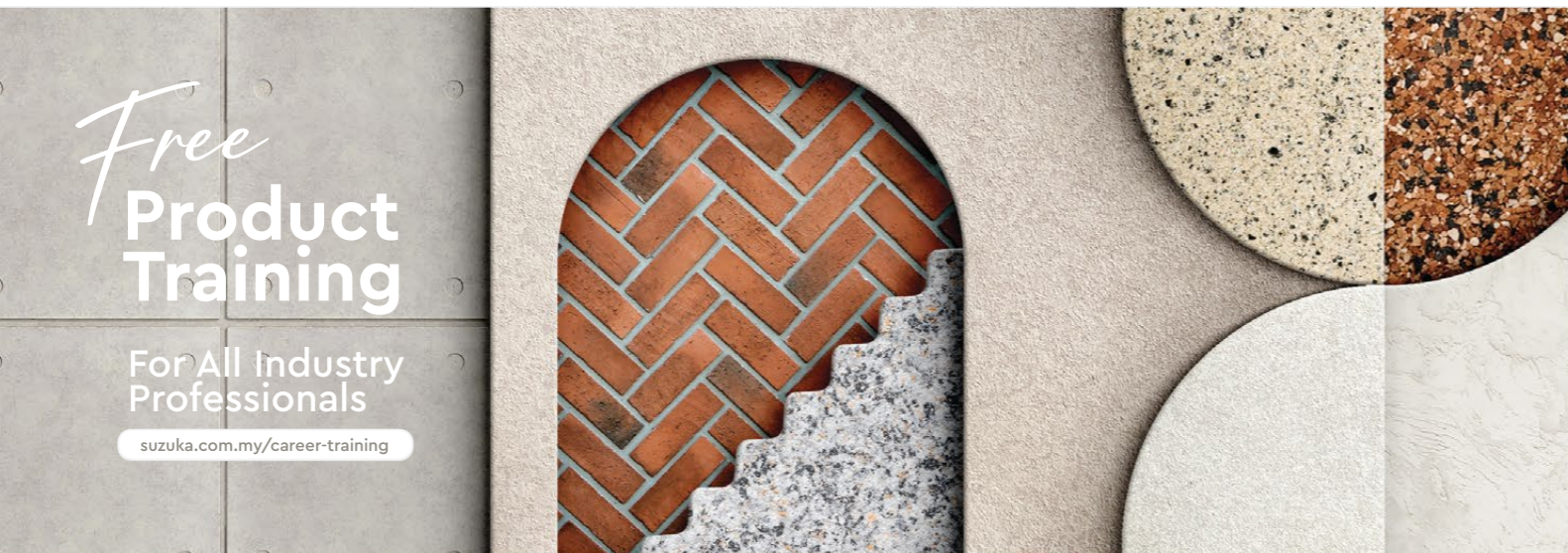
SUZUKA®
LINOSA
FORMULATED LIME-BASED PLASTER

DESIGNER SERIES



LNS-006 & LNS-014

EDITION
01



Free
Product Training

For All Industry Professionals

suzuka.com.my/career-training

WALL FINISH
PROFESSIONALS.

SINCE
1977



suzuka.com.my

f @ suzuka.group +6012-258 7388



All images included in this catalog are for visual reference only. Actual product may have a slight color difference due to variations in printing processes or digital viewing settings. We suggest you examine actual product samples before ordering.



LINOSA-E1-2605

SUZUKA® LINOSA

“ Formulated Lime-based Plaster for the Interior ”

Linosa is a high-performance dry-mix lime-based plaster formulated with an advanced resin-reinforced binder system to improve mechanical strength, adhesion, weather resistance, and crack control.

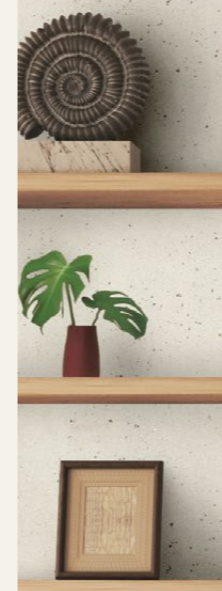
Blended with natural stone aggregates, **Linosa** delivers an authentic stone-like appearance with subtle texture variation, making it ideal for both rustic and contemporary finishes.

The combination of lime, high-performance resin, and natural stone minerals produces a breathable, durable, and visually rich plaster suitable for architectural, interior applications.



LNS-007

DESIGNER
SERIES



Features



Breathable
Composition



Suitable for
the Interior



Resistant to peeling,
flaking & chalking



Low VOC
& Odor



Environmentally
Friendly



Easy Application
& Maintenance



Durable Against
Weather Conditions



Improved flexibility
& crack resistance



High-performance resin
for enhanced durability

• Color customization is available upon request, subject to order quantity.

LNS-005



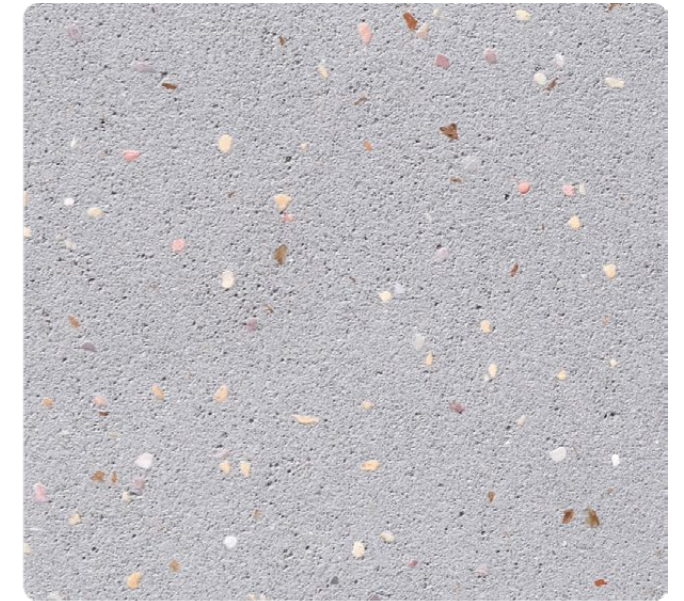
Unveiling *Grandeur* in *Textures*

 All images included in this catalog are for visual reference only.

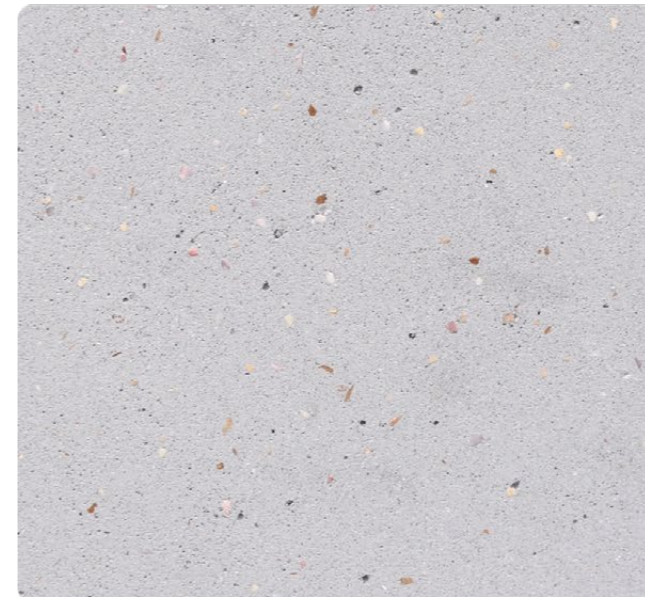
Actual product may have a slight color difference due to variations in printing processes or digital viewing settings. We suggest you examine actual product samples before ordering.



LNS-001



LNS-002



LNS-003



LNS-004



LNS-005



LNS-006

• Color customization is available upon request, subject to order quantity.

All images shown are for visual reference only. Please be aware that product colors may appear slightly different in print and on various digital screens.





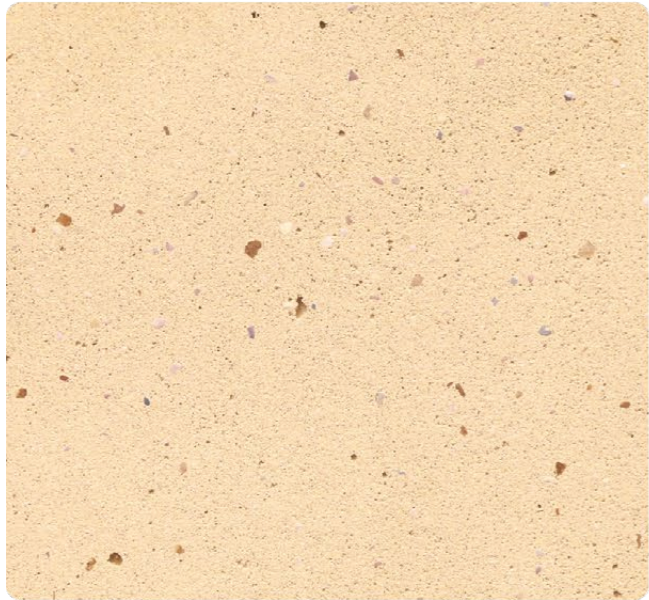
LNS-007



LNS-008



LNS-013



LNS-009



LNS-010



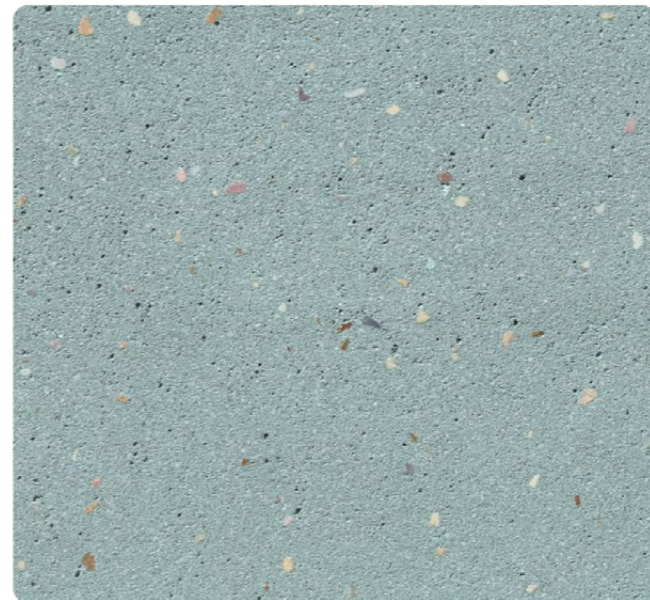
LNS-014



LNS-011

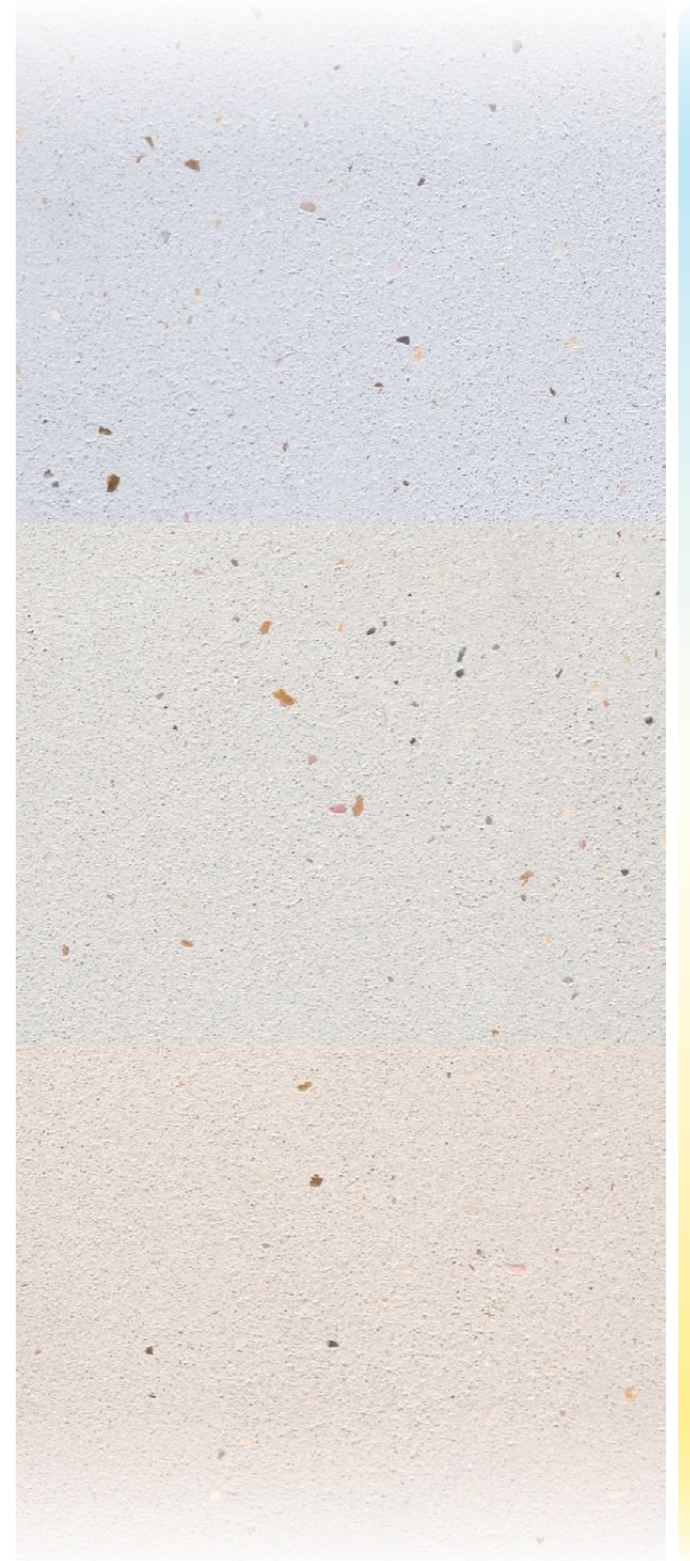


LNS-012



LNS-015

Lighting Color *Influence*



Cool Light

Neutral Light

Warm Light

Lighting color dramatically influences how a coating color appears by adding a layer of color to the surface, altering its perceived warmth, coolness, and vibrancy.

• Color customization is available upon request, subject to order quantity.



All images shown are for visual reference only. Please be aware that product colors may appear slightly different in print and on various digital screens.

SUZUKA®
LINOSA
 Coating System

Topcoat

• Suzuka® AP Clear

3

Texture Coat

• Suzuka® Linosa (LNS)

2

EM Primer

• Suzuka® EM Primer (EMP)

1

Substrate

SUZUKA® **LINOSA** Application Process

Process	Material (Dilution)	Number of Coats	Time Interval Between Process	Consumption (±15%)	Tools
1 Primer	Suzuka® EM Primer (Dilution: Max 5% with water)	1	4 hrs	7 – 9 m ² /l	Spray or Roller
2 Texture Coat	Suzuka® Linosa Powder + Colourants : Water (Mixing ratio: 20 : 6.5)	1 – 2	24 hrs	3.6 – 5.0 kg/m ² (2 – 3 mm)	Trowel
3 Top Coat	Suzuka® AP Clear (Dilution: Ready to use)	1 – 2	2 hrs	8 – 10 m ² /l	Spray or Roller

* For more details, please request to see the Technical Data Sheet (TDS).

LNS-007 & LNS-010

TRV-003



Application Instructions

Surface Preparation

- Clean surface of dust, grease, oil, and loose materials (pressure washing recommended).
- Ensure surface is dry (moisture content <16%).
- Repair all cracks or surface defects.
- Treat high alkaline surfaces with EM-Sealer.
- Ensure wall surface is even & flat. Skimming is recommended before application.
- For enhanced adhesion, apply Suzuka Wall Sealer Pro on concrete, skim-coated, or masonry surfaces before proceeding with further coatings.

Step 1 – Primer

Apply EM Primer uniformly and allow to dry for 3-4 hours.

Step 2 – Texture Coat

- 1 Load in 150 – 200 ml colourants into 6.5 kg water. Mix well for 2 – 3 minutes.
- 2 Mix LINOSA powder gradually into the mixture and blend for 3 – 5 minutes until smooth and lump-free.
- 3 After mixing, rest the mixture for 1 – 2 minutes before application.
- 4 Apply LINOSA using a stainless-steel trowel to achieve uniform thickness.
- 5 Allow to dry for 24 hours (depending on temperature) and perform polishing when the surface is hard.

Polishing Steps

Step 1 : Initial sanding

- Use P80 grit sandpaper to level high spots, remove application lines, and even out the texture.

Step 2 : Fine Polishing

- Follow with P120 grit sandpaper to refine the surface and achieve a smooth, natural stone-like finish.

Note:
Sanding should be done gently and evenly to avoid over-removing material or exposing substrate. Recommended to sand only after the surface has stiffened sufficiently.

Step 3 – Topcoat

Apply AP Clear as the protective finishing layer to enhance durability of the coating. Allow to dry.

SUZUKA® LINOSA Packing Set

Material	Packing	Coverage
Suzuka® EM Primer	1 L	7.0 - 9.0 sqm
Suzuka® Linosa Powder & Colourants (180 - 200 ml*)	20 kg	6.0 - 6.6 sqm
Suzuka® AP Clear	1 L	8.0 - 10.0 sqm



LNS-004



SUZUKA® WALL SEALER PRO

“ Make your wall finishes last longer! ”

Superior primer for concrete, skimmed or masonry surfaces.

This sealer that has good substrate penetration abilities to increase adhesion of product to prevent chalking or peeling off. It has excellent alkaline resistance properties that can prevent efflorescence. It is an ideal base coat for any SUZUKA® or any wall finish products.

Packing Size:

1L 5L 20L

Coverage

6.5 - 8.5 m²/l/coat

Drying Time (hour)

Surface Dry : 1 | Hard Dry : 5 | Recoating : 5

Substrate Temperature: 23°C - 26°C

Suitable for:

- Masonry wall
- Brickwork
- Plaster
- Skimmed Coat
- Asbestos free substrate

Features:

- Excellent alkaline resistance to prevent efflorescence.
- Good for new walls and repainting.
- Prevents skim coat from chalking & peeling off.
- Extremely good penetration.
- Excellent adhesion.
- Exterior and interior use.
- Applicable with brush, roller or spray gun.

Airless Spray

Nozzle 1.8 - 2.0 mm

Spray Angle Degree 65° - 80°

Pressure 210 psi/150kg/cm²

TRV-009