

10 YEARS WARRANTY  
STRATO®



STRATO® METALLICS  
SATIN



STS-505

EDITION  
2.1

Smooth & Pearlescent  
INTERIOR TEXTURED PAINTS

10 YEARS WARRANTY

Grab & Win!  
iPad Pro

Check out our contest!  
suzuka.com.my/promotion | T&C Apply

Free Product Training

For All Industry Professionals  
suzuka.com.my/career-training

WALL FINISH PROFESSIONALS.

SINCE 1977



suzuka.com.my

f @ suzuka.group +6012-258 7388



All images included in this catalog are for visual reference only. Actual product may have a slight color difference due to variations in printing processes or digital viewing settings. We suggest you examine actual product samples before ordering.



STRATO SATIN-E2.1-2605



# STRATO<sup>®</sup> SATIN



The Strato<sup>®</sup> Metallics Satin collection highlights an array of soft-hued silky colours, creating a creamy and pearly finish for a sophisticated and refined look.

Pick from a range of light to dark pastel tones to match any kind of environment, whether it's a bedroom, café, or office space.



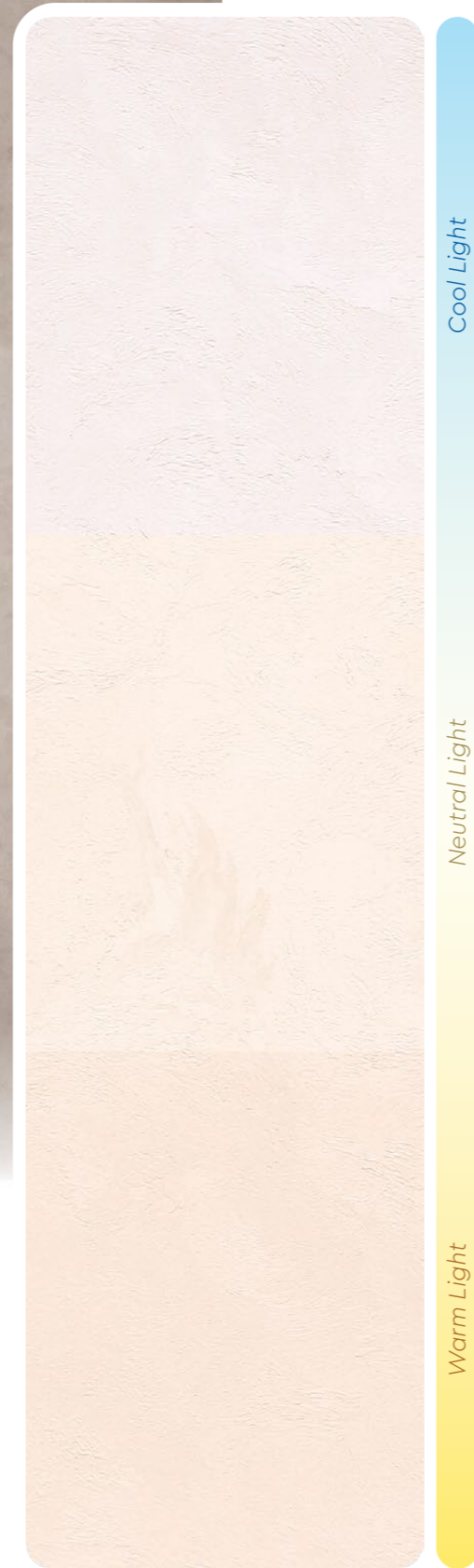
## Appearance

Low Sheen	● ● ● ● ●	High Sheen
Smooth Texture	● ● ● ● ●	Rough Texture
Matte	● ● ● ● ●	Metallic

Complies to the  
 • Singapore Green Label  
 • American California Proposition 65  
 • LEED, U.S. Green Building Council Standards

## Features

Low VOC & Odor	Green Choice, Water Based & Eco-friendly	For the Interior
Formaldehyde & Lead Free	Easy Application & DIY Friendly	Applicable on Ceiling
Easy to Touch Up	Easy Maintenance	Metallic Finish



## Lighting Color Influence

Lighting color dramatically influences how a paint color appears by adding a layer of color to the surface, altering its perceived warmth, coolness, and vibrancy.

# STRATO<sup>®</sup> INTERIOR TEXTURED PAINT



Elevate your walls—and your peace of mind—with our newly launched **10-year warranty** on Strato textured paint

Designed to deliver long-lasting character and unmatched durability, this warranty reflects our confidence in the **premium quality** of our paint.

### What it Covers?

Protection against **peeling, cracking, and fading**, ensuring your finish remains vibrant and intact for a **full decade**.

### Why it Matters?

Textured finishes transform ordinary surfaces into statement features. With this warranty, you can enjoy that rich, tactile aesthetic worry-free — **no frequent touch-ups or repairs needed**.

A hassle-free, protected investment in your space — offering both **visual appeal** and **reliable performance**.



STS-501 Floral White



STS-502 Seashell



STS-503 Misty Rose



STS-501 Floral White



STS-502 Seashell



All color shown are as close to the actual Suzuka® Strato® colors as modern printing techniques permit, nonetheless, there are still color/tone differences.

**We highly recommend seeing actual samples before ordering.**



STS-504 Peach Puff



STS-504 Peach Puff



STS-506 Ash Blonde



STS-506 Ash Blonde



STS-506 Ash Blonde



All color shown are as close to the actual Suzuka® Strato® colors as modern printing techniques permit, nonetheless, there are still color/tone differences.

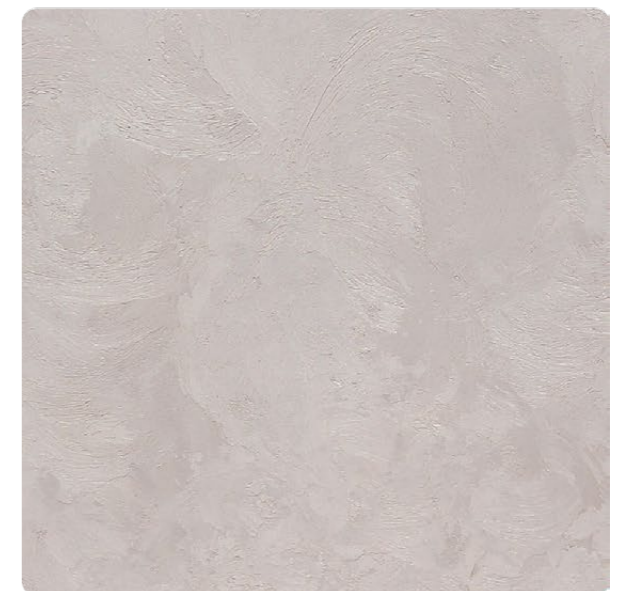
**We highly recommend seeing actual samples before ordering.**



STS-504 Peach Puff



STS-505 Milky Latte



STS-506 Ash Blonde



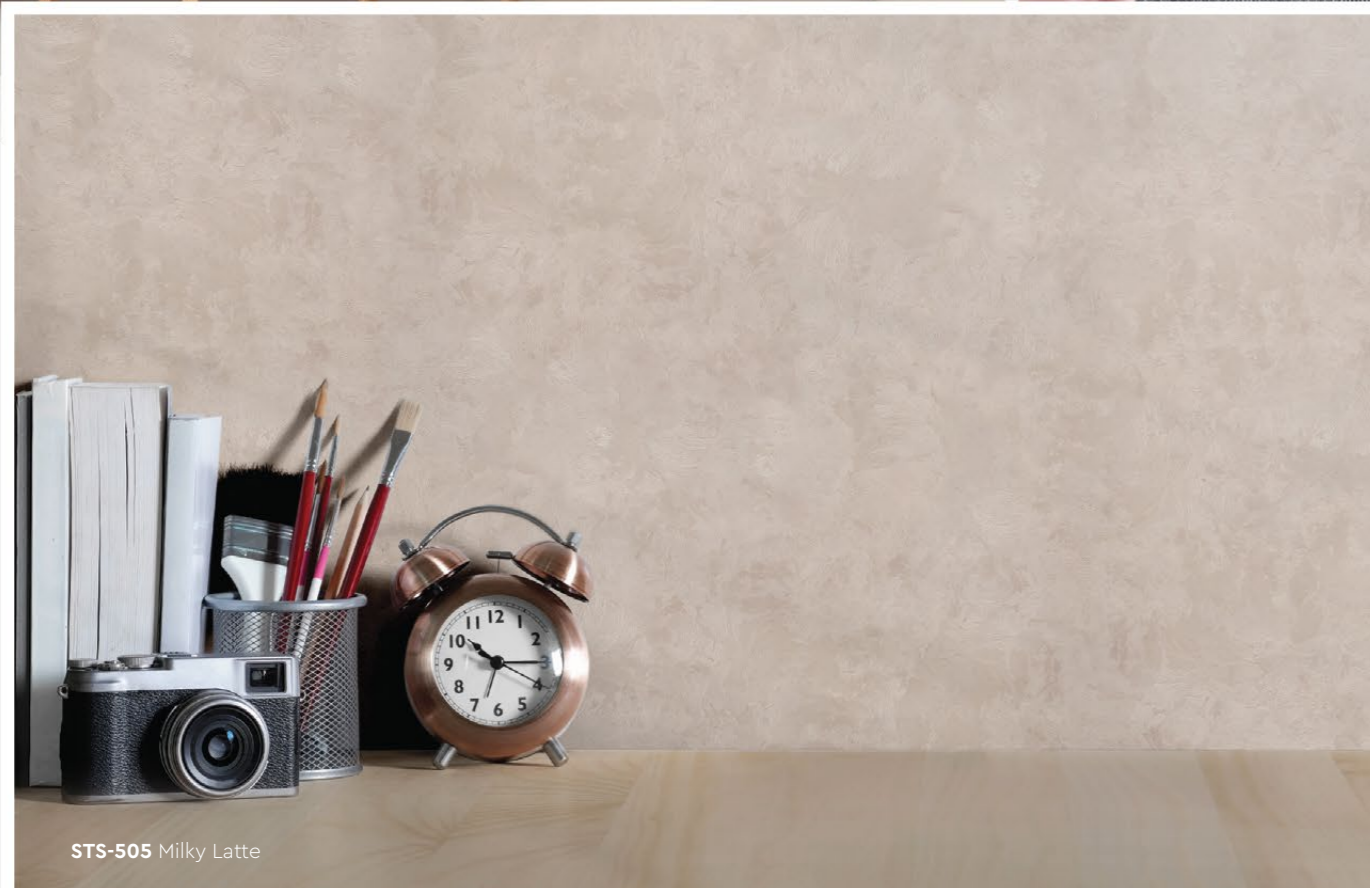
STS-505 Milky Latte



STS-508 Pale Green



STS-507 Slate Grey



STS-505 Milky Latte



STS-507 Slate Grey



STS-508 Pale Green



STS-509 Rust



All color shown are as close to the actual Suzuka® Strato® colors as modern printing techniques permit, nonetheless, there are still color/tone differences.

**We highly recommend seeing actual samples before ordering.**



# Application Instructions

**Preparation:**

- Surface shall be dry and free from dirt, oil, grease and foreign matters.
- Surface unevenness, cracks or any defects shall be repaired & treated.

**IMPORTANT:**

Color may vary on application technique & amount of material used.

**Dilution Guide:**

Primer : Max 3% of clean water  
Texture : Do not dilute.



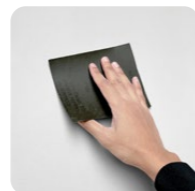
STS-508 Pale Green



## 1 Primer

Roll 2 layers of primer on the entire surface. Allow 30 minutes to dry between the layers. (The primer can be diluted with maximum 3% of clean water)

**Tool: Roller**



## 2 Sanding (Optional)

Sand surface with sandpaper (600 grit) to ensure a smooth surface.

**Tool: 600 Grit Sand Paper**

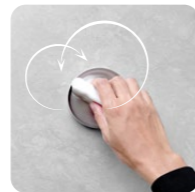


## 3 Texture Coat

**Step A : Trowel**

Apply texture coat evenly onto the surface (Do not dilute the texture coat with water or any solvents)

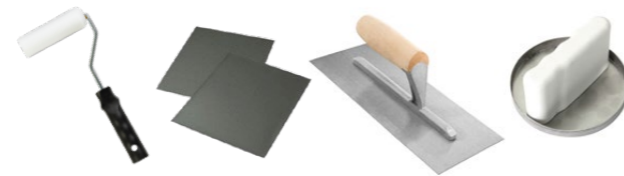
**Tool: Stainless Steel Trowel**



**Step B : Trowel**

Use piccolo tool to create texture effects by moving with random motion. Let dry for 30 to 40 minutes.

**Tool: Piccolo Tool**



**Tools:** Roller, Sand Paper (600 Grit) Trowel & Piccolo Tool



## PACKING

Packing	Material	Coverage / set (±5%)
2L set	1L Primer	6 - 7 sqm (Wall)
	1L Texture Coat	5 - 6 sqm (Ceiling)

\* Piccolo tool is sold separately

**SUZUKA® WALL SEALER PRO**

“ Make your wall finishes last longer! ”

**Superior primer for concrete, skimmed or masonry surfaces.**

This sealer that has good substrate penetration abilities to increase adhesion of product to prevent chalking or peeling off. It has excellent alkaline resistance properties that can prevent efflorescence. It is an ideal base coat for any SUZUKA® or any wall finish products.

Packing Size:

**1L 5L 20L**

Coverage	Drying Time (hour)		
6.5 - 8.5 m <sup>2</sup> /l/coat	Surface Dry : 1	Hard Dry : 5	Recoating : 5
	Substrate Temperature: 23°C - 26°C		

Suitable for:

- Masonry wall
- Brickwork
- Plaster
- Skimmed Coat
- Asbestos free substrate

Features:

- Excellent alkaline resistance to prevent efflorescence.
- Good for new walls and repainting.
- Prevents skim coat from chalking & peeling off.
- Extremely good penetration.
- Excellent adhesion.
- Exterior and interior use.
- Applicable with brush, roller or spray gun.

Airless Spray	Nozzle 1.8 - 2.0 mm	Spray Angle Degree 65° - 80°	Pressure 210 psi/150kg/cm <sup>2</sup>
---------------	---------------------	------------------------------	--