

10 YEARS WARRANTY
STRATO



STRATO
LINNEN

EDITION
2.1



Matte & grainy

INTERIOR TEXTURED PAINTS

- Complies to the
- American California Proposition 65 Standard.
 - LEED, U.S. Green Building Council Standard.

10 YEARS WARRANTY



Cheap & Win!
iPad Pro
Check out our contest!
suzuka.com.my/promotion | T&C Apply

Free
Product Training

For All Industry Professionals
suzuka.com.my/career-training

WALL FINISH PROFESSIONALS.

SINCE 1977



suzuka.com.my

[f](#) [@](#) [t](#) [suzuka.group](#) [+6012-258 7388](#)

All images included in this catalog are for visual reference only. Actual product may have a slight color difference due to variations in printing processes or digital viewing settings. We suggest you examine actual product samples before ordering.



LINNEN-E2.1-2604

STRATO LINNEN



Linnen is designed to add depth, quality and character to any room, it creates a rich look that is also subtle and soft on the eyes. Not only does our texture paint add an aesthetic element to your walls, it also provides a practical benefit by hiding imperfections and flaws.

Made from high-quality materials, our texture paint is available in a range of colors, allowing you to achieve the perfect look for your space. Our paint is also easy to apply, making it the perfect choice for both professional painters and DIY enthusiasts.



Appearance

Low Sheen	● ● ● ● ●	High Sheen
Smooth Texture	● ● ● ● ●	Rough Texture
Matte	● ● ● ● ●	Metallic

- Complies to the
- American California Proposition 65
 - LEED, U.S. Green Building Council Standards
- Recommended for areas larger than 100 sqf

Features

Low VOC & Odor	Green Choice, Water Based & Eco-friendly	Anti-chalking & Efflorescence	For the Interior
Formaldehyde & Lead Free	Easy Application & DIY Friendly	Applicable on Ceiling	Matte Finishing
Easy to Touch Up	Easy Maintenance	Crack Resistant	



Cool Light

Neutral Light

Warm Light

Lighting Color Influence

Lighting color dramatically influences how a paint color appears by adding a layer of color to the surface, altering its perceived warmth, coolness, and vibrancy.

STRATO®

INTERIOR TEXTURED PAINT



Elevate your walls—and your peace of mind—with our newly launched **10-year warranty** on Strato textured paint

Designed to deliver long-lasting character and unmatched durability, this warranty reflects our confidence in the **premium quality** of our paint.

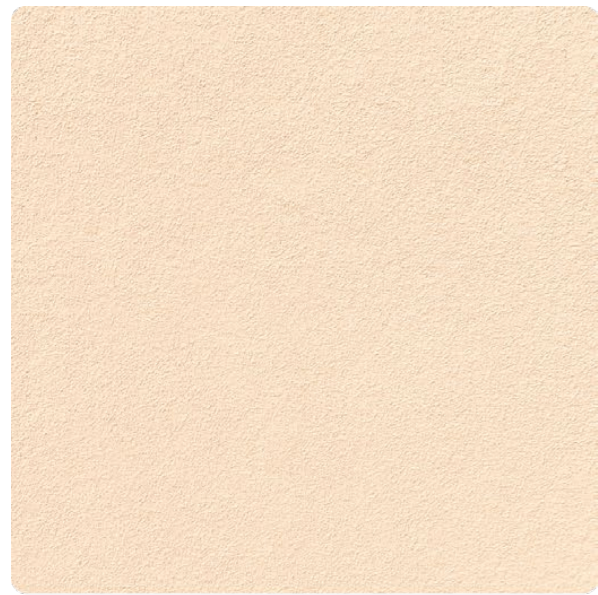
What it Covers?

Protection against **peeling, cracking, and fading**, ensuring your finish remains vibrant and intact for a **full decade**.

Why it Matters?

Textured finishes transform ordinary surfaces into statement features. With this warranty, you can enjoy that rich, tactile aesthetic worry-free — **no frequent touch-ups or repairs needed**.

A hassle-free, protected investment in your space — offering both **visual appeal** and **reliable performance**.



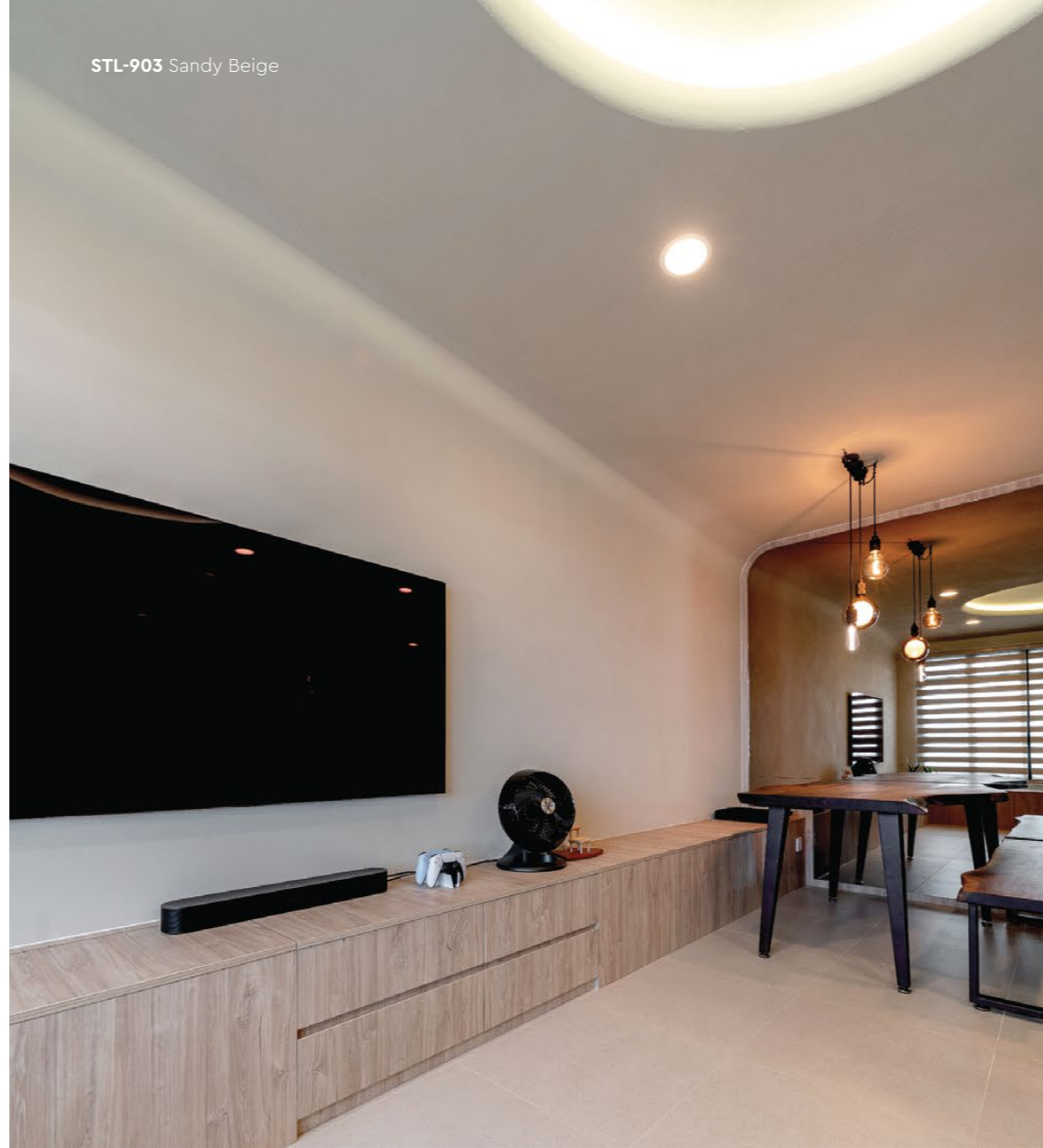
STL-901 Ivory Cream



STL-902 Magnolia Cream



STL-903 Sandy Beige



STL-903 Sandy Beige



STL-903 Sandy Beige

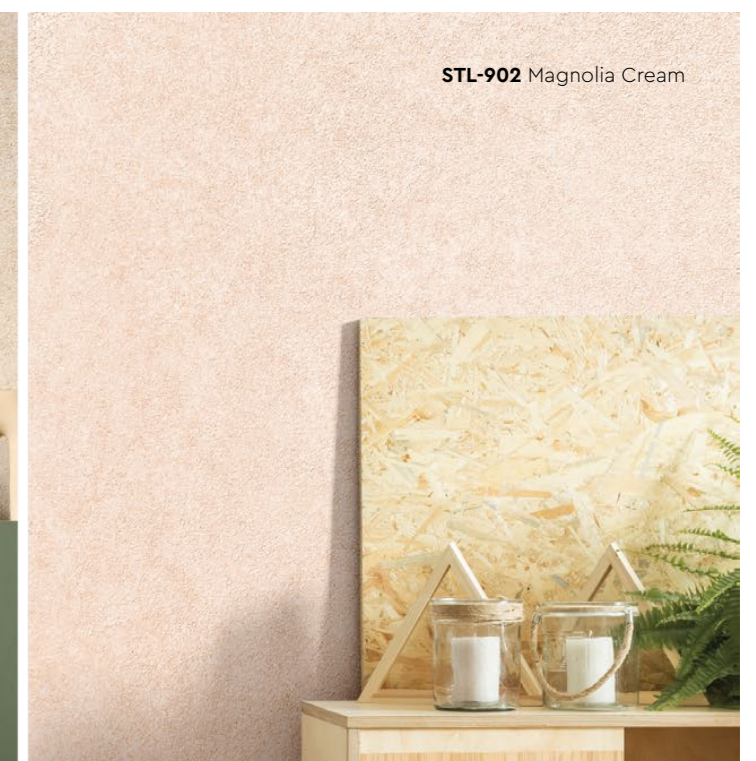


All color shown are as close to the actual Suzuka® Strato® colors as modern printing techniques permit, nonetheless, there are still color/tone differences.

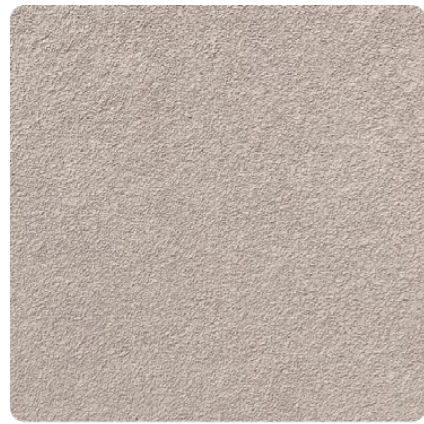
We highly recommend seeing actual samples before ordering.



STL-901 Ivory Cream



STL-902 Magnolia Cream



STL-904 River Grey



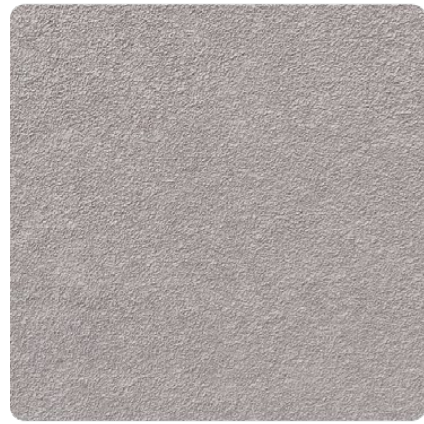
STL-905 Fog Grey



STL-906 Frost Grey



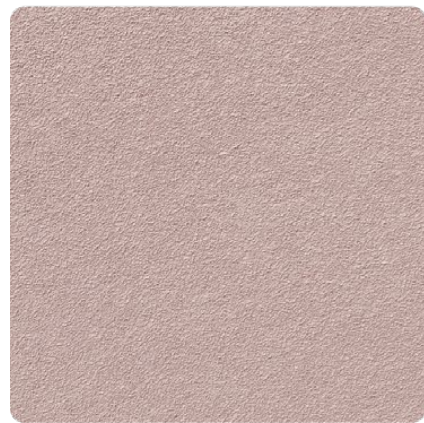
STL-907 Thunder Grey



STL-908 Smokey Grey



STL-909 Lead Grey



STL-910 Taupe Crepe



All color shown are as close to the actual Suzuka® Strato® colors as modern printing techniques permit, nonetheless, there are still color/tone differences.

We highly recommend seeing actual samples before ordering.

STL-906 Frost Grey



STL-904 River Grey



STL-909 Lead Grey



STL-910 Taupe Crepe



STL-911 Rose Tint



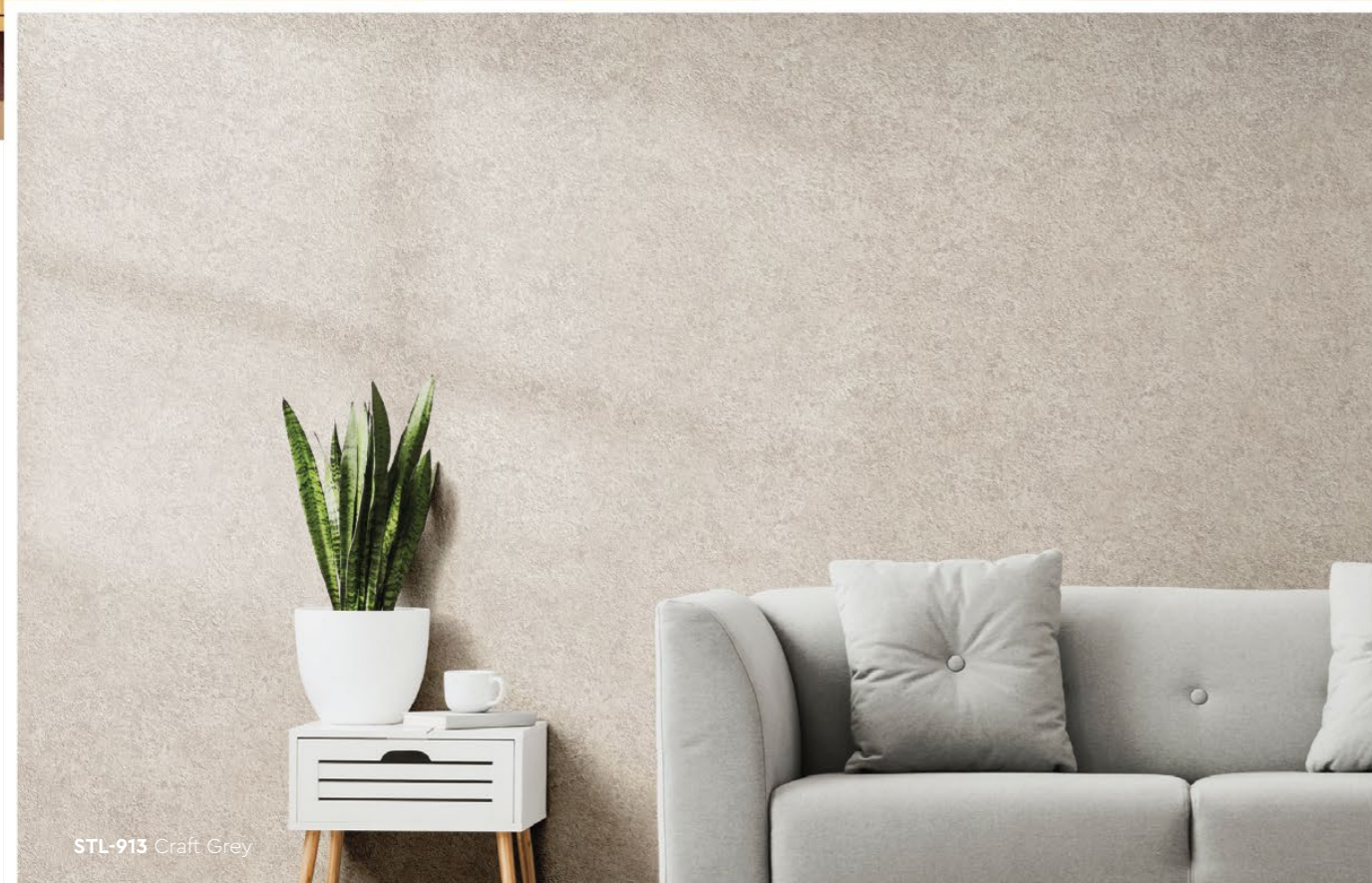
STL-912 Burnt Orange



STL-911 Rose Tint



STL-912 Burnt Orange



STL-913 Craft Grey



All color shown are as close to the actual Suzuka® Strato® colors as modern printing techniques permit, nonetheless, there are still color/tone differences.

We highly recommend seeing actual samples before ordering.



STL-913 Craft Grey



Application Instructions

Preparation:

- Surface shall be dry and free from dirt, oil, grease and foreign matters.
- Surface unevenness, cracks or any defects shall be repaired & treated.

IMPORTANT:

Color may vary on application technique & amount of material used.

Dilution Guide:

Primer : Max 3% of clean water
Texture : Do not dilute.



1 Primer

Roll 2 layers of primer on the entire surface. Allow 30 minutes to dry between the layers. (The primer can be diluted with maximum 3% of clean water)

Tool: Paint Roller



2 Texture Coat

Texture Coat (First Layer)

Roll texture coat randomly on the surface. Ensure the whole surface is covered. Let dry.



Texture Coat (Second Layer)

Roll second layer of texture coat randomly on the surface. Let dry.

Tool: Linnen Texture Roller



Tools: Linnen Texture Roller & Paint Roller



PACKING



Packing	Material	Coverage (±5%)
3L set	1L Primer	7 - 10 sqm per set
	2L Texture Coat	

* Linnen Texture Roller is sold separately



STL-907 Thunder Grey

SUZUKA®

WALL SEALER PRO

“ Make your wall finishes last longer! ”

Superior primer for concrete, skimmed or masonry surfaces.

This sealer that has good substrate penetration abilities to increase adhesion of product to prevent chalking or peeling off. It has excellent alkaline resistance properties that can prevent efflorescence. It is an ideal base coat for any SUZUKA® or any wall finish products.

Packing Size:

- 1L
- 5L
- 20L

Coverage	Drying Time (hour)		
6.5 - 8.5 m ² /l/coat	Surface Dry : 1	Hard Dry : 5	Recoating : 5
Substrate Temperature: 23°C - 26°C			

Suitable for:

- Masonry wall
- Brickwork
- Plaster
- Skimmed Coat
- Asbestos free substrate

Features:

- Excellent alkaline resistance to prevent efflorescence.
- Good for new walls and repainting.
- Prevents skim coat from chalking & peeling off.
- Extremely good penetration.
- Excellent adhesion.
- Exterior and interior use.
- Applicable with brush, roller or spray gun.

Airless Spray	Nozzle 1.8 - 2.0 mm	Spray Angle Degree 65° - 80°	Pressure 210 psi/150kg/cm²
---------------	-------------------------------	--	---