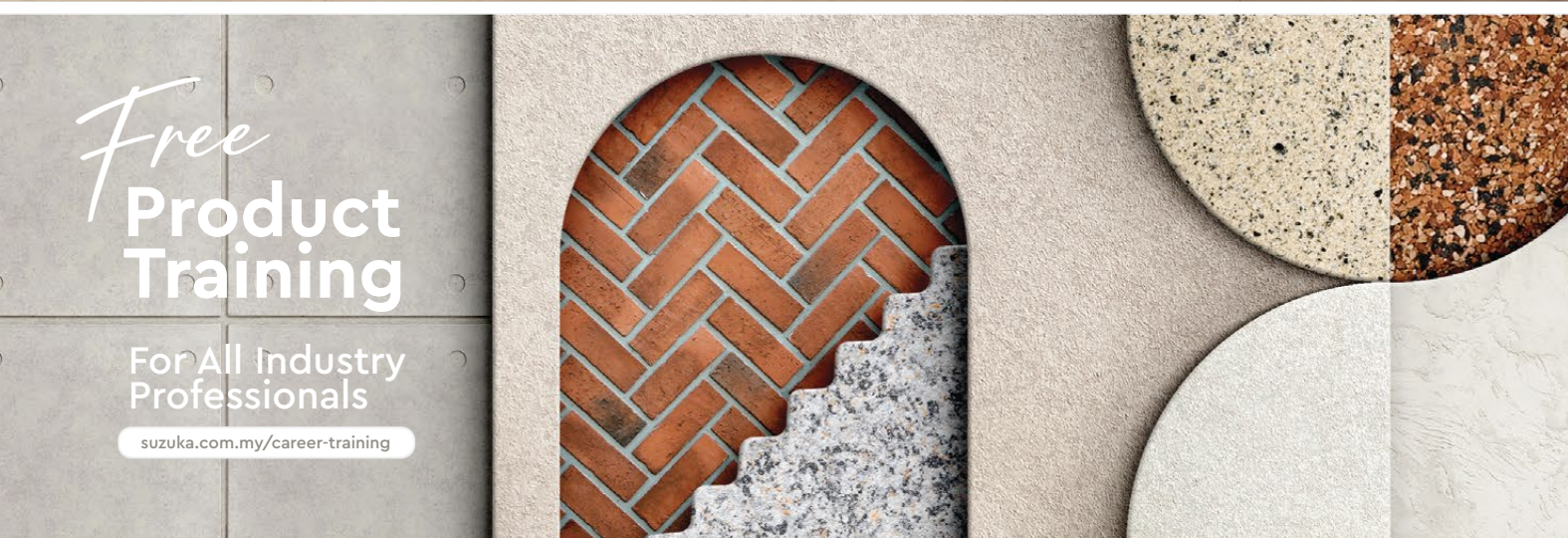


*Cheap & Win!*  
**iPad Pro**  
 Check out our contest!  
[suzuka.com.my/promotion](http://suzuka.com.my/promotion) | T&C Apply



## WALL FINISH PROFESSIONALS



**suzuka.com.my**

**suzuka.group** | Hotline : +6012-258 7388

Photos of the products shown in this catalogue may vary in color due to lighting condition & printing. **We suggest you examine actual product samples before ordering.**



KASTONE EDGE-E1-2508



KASTONE®  
**EDGE**

STONE VENEER  
 COLLECTION



EDITION  
**01**

WALL FINISH  
 PROFESSIONALS.

SINCE  
 1977



# KASTONE® EDGE

STONE VENEER COLLECTION

Kastone Edge is a unique and versatile addition to any home decor. These stones are carefully crafted into geometric shapes, and can be used in a variety of ways to add a touch of modern sophistication and elegance to any space, interior or exterior.

In addition to their aesthetic value, geometric stones are also highly durable and low-maintenance. Made from high-quality materials, these stones are resistant to wear and tear.

## KASTONE® EDGE

- |   |        |   |        |
|---|--------|---|--------|
| 1 | EG-101 | 5 | EG-301 |
| 2 | EG-102 | 6 | EG-302 |
| 3 | EG-201 | 7 | EG-401 |
| 4 | EG-202 | 8 | EG-402 |
|   |        | 9 | EG-403 |





EG-101

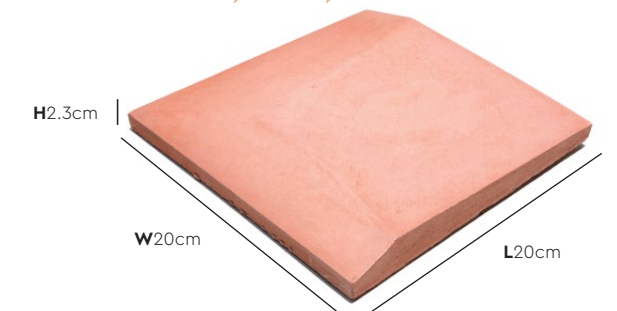


EG-102



EG-102

## EG-10 series



EG-101



EG-102

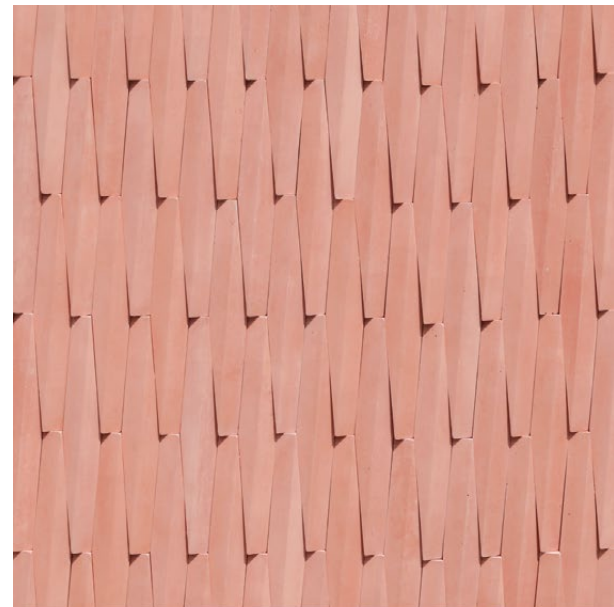
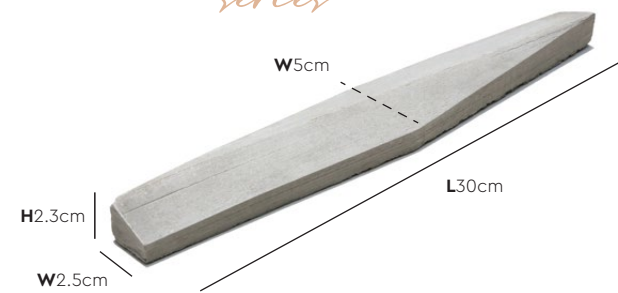
Coverage (Per box)	Weight (Per box)	Pieces (Per box)
<b>7.2 - 7.7 sqf</b>	<b>27 kg</b>	<b>18 pcs</b>

\*Please allow a +/- 5% tolerance for stone size and colour.

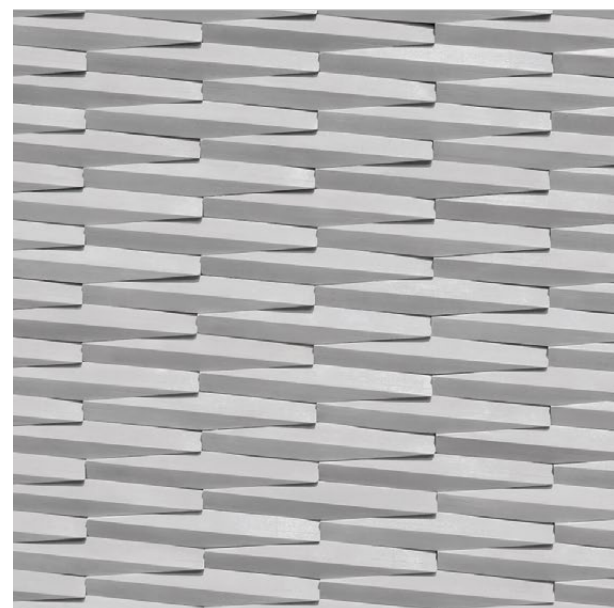


# EG-20

series



EG-201



EG-202

Coverage (Per box)	Weight (Per box)	Pieces (Per box)
<b>9.2 – 9.7 sqf</b>	<b>27 kg</b>	<b>80 pcs</b>

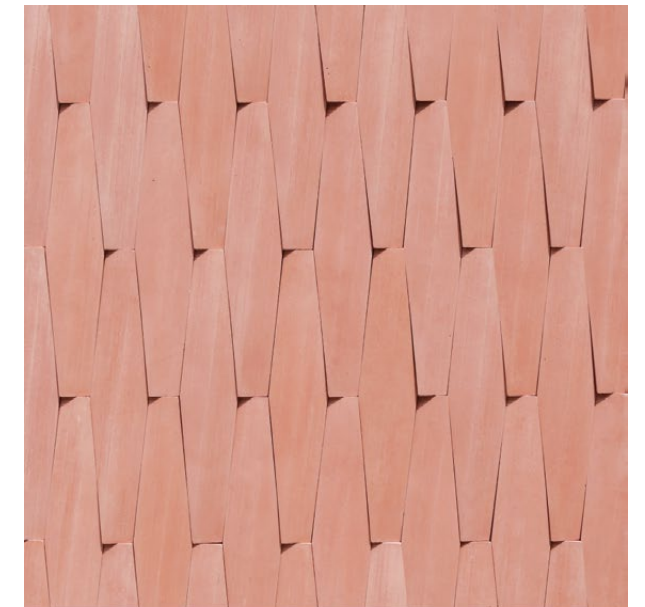
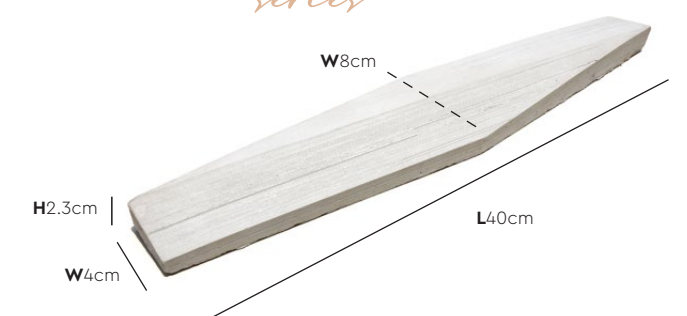
\*Please allow a +/- 5% tolerance for stone size and colour.

EG-302



# EG-30

series



EG-301



EG-302

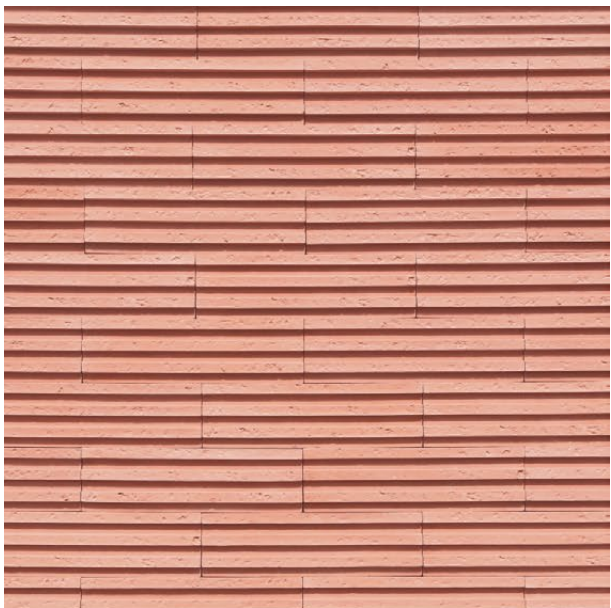
Coverage (Per box)	Weight (Per box)	Pieces (Per box)
<b>8.8 – 9.3 sqf</b>	<b>29 kg</b>	<b>36 pcs</b>

\*Please allow a +/- 5% tolerance for stone size and colour.

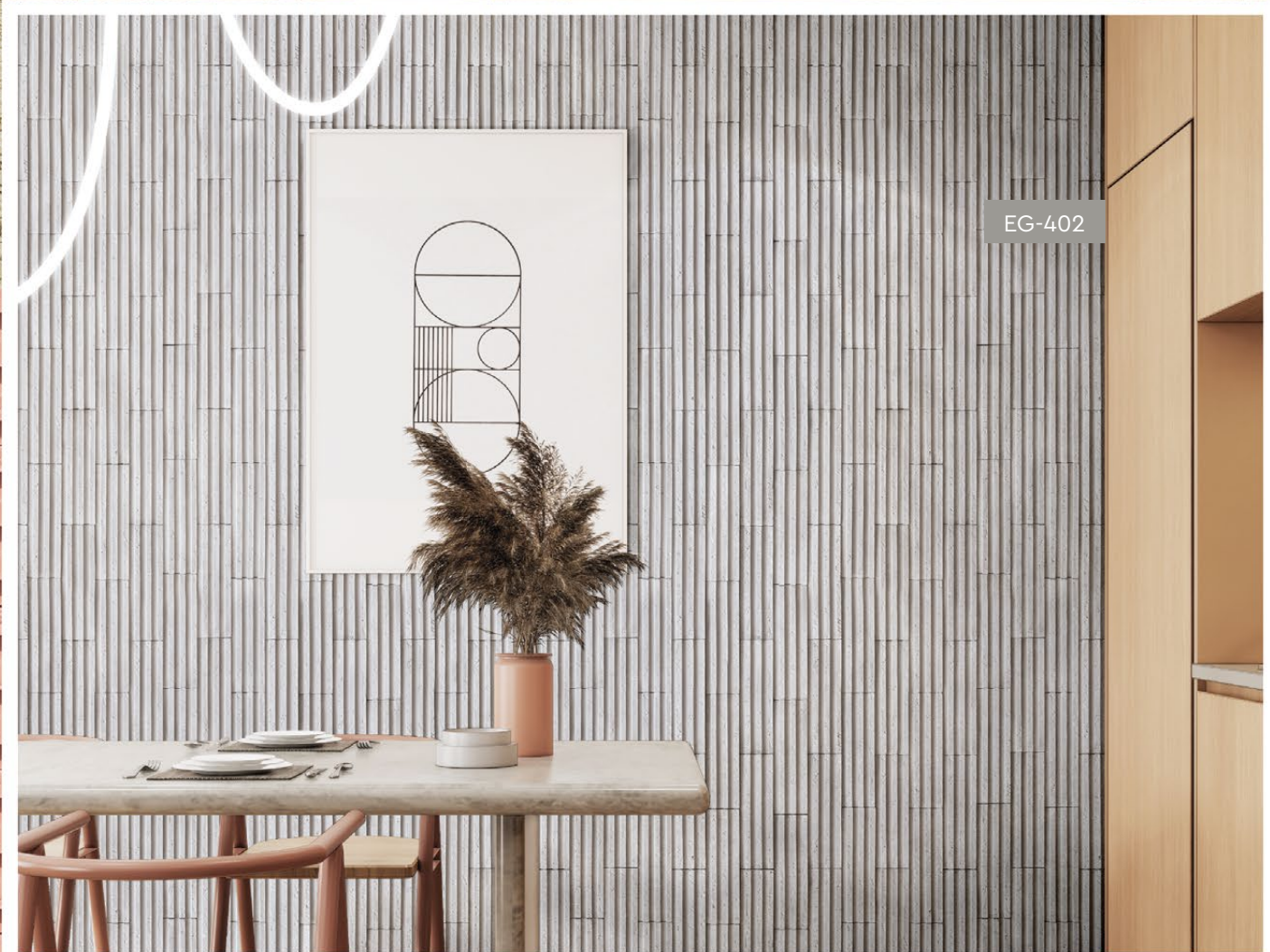


EG-201



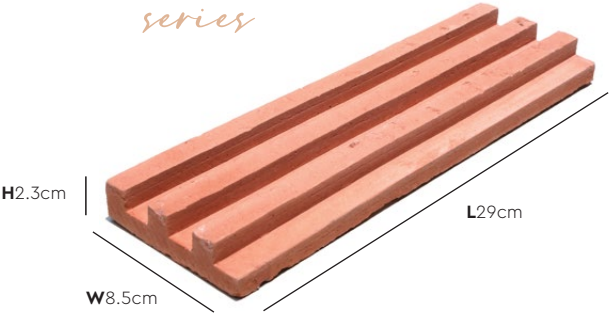


EG-401



EG-402

# EG-40 series



Coverage (Per box)	Weight (Per box)	Pieces (Per box)
<b>7.6 – 8.0 sqf</b>	<b>24 kg</b>	<b>30 pcs</b>

\*Please allow a +/- 5% tolerance for stone size and colour.



EG-403



# Installation Instructions



## Step 1 – Surface Preparation

- A Hack uniformly across the wall (using an axe, drill, or hammer) to create a rough and pitted texture on the surface.
- B Clean the surface to ensure it is free from dirt and dust.



## Step 2 – Mortar Application

Apply a generous layer of mortar across the wall using the notched edge trowel, creating a "combed" surface pattern.



## Step 3 – Stone Application

Complete this step starting from the bottom of the wall & moving upwards: Apply a thick layer of mortar onto the back side of a stone. Press the stone firmly onto the mortared wall surface & hold for a few seconds. Use a leveler if necessary to ensure a level arrangement.



## Step 4 – Cleaning Up

Once the stones are firmly affixed, clean the surface with a dry brush to clear the stones of any dust



## Step 5 – Topcoat Application (Optional)

It is recommended to apply a topcoat layer of either SUZUKA® High Gloss or SUZUKA® Natural Stone Care. This helps enhance the protection of SUZUKA® Stone Veneer against dirt, oil, grease, water stains, fungus, mold and weather conditions.



### Tools:



Axe



V-Notch Trowel



Trowel



Leveler



Hand Brush



Sponge



## TECHNICAL SPECIFICATIONS

Series	EG-10	EG-20	EG-30	EG-40
Dimension (cm)	L20 x W20 x H2.3	L30 x W5,W2.5 x H2.3	L40 x W8,W4 x H2.3	L29 x W8.5 x H2.3
Coverage Per Box (sqf)	7.2 - 7.7	9.2 - 9.7	8.8 - 9.3	7.6 - 8.0
Weight per Box (kg)	27	27	29	24
Pieces Per Box	18	80	36	30
Boxes Per Pallet	40	24	24	36
M³ Per Pallet	1.12	1.34	1.28	1.08

\*Please allow a +/- 5% tolerance for stone size and colour.  
\*May vary in colour due to lighting conditions and printing. We suggest you examine product samples before ordering.

