

Cnap & Win!
iPad Pro
 Check out our contest!
suzuka.com.my/promotion | T&C Apply



STRATO[®]

CEMENT TEXTURE & VELOURS

EDITION
1.2



Free
Product Training
 For All Industry Professionals
suzuka.com.my/career-training



WALL FINISH PROFESSIONALS



suzuka.com.my
 suzuka.group | Hotline : +6012-258 7388



Photos of the products shown in this catalogue may vary in color due to lighting condition & printing. We suggest you examine actual product samples before ordering.



SCT & SVL-E1.2-2505

WALL FINISH
 PROFESSIONALS.

SINCE
 1977



Matte & smooth

INTERIOR TEXTURED PAINTS

- Complies to the
- American California Proposition 65 Standard.
 - LEED, U.S. Green Building Council Standard.
 - Singapore Green Label.



STRATO®

Matte & smooth

1

STRATO® CEMENT TEXTURE

Page 3 – 12

2

STRATO® VELOURS

Page 13 – 26



Create two different patterns with
SCT or SVL using different tools and techniques!



Trowel Pattern

Application
with trowel.



Piccolo Pattern

Application with
piccolo tool.

SUZUKA® WALL SEALER PRO

“ Make your
wall finishes
last longer! ”



Packing Size: **1L** **5L** **20L**

Superior primer for concrete, skimmed or masonry surfaces.

This sealer that has good substrate penetration abilities to increase adhesion of product to prevent chalking or peeling off.

It has excellent alkaline resistance properties that can prevent efflorescence. It is an ideal base coat for any SUZUKA® or any wall finish products.

Coverage	Drying Time (hour)	
6.5 - 8.5 m ² /l/coat	Surface Dry : 1	Substrate Temperature: 23°C - 26°C
	Hard Dry : 5	
	Recoating : 5	

Features:

- Excellent alkaline resistance to prevent efflorescence.
- Good for new walls and repainting.
- Prevents skim coat from chalking & peeling off.
- Extremely good penetration.
- Excellent adhesion.
- Exterior and interior use.
- Applicable with brush, roller or spray gun.

Suitable for:

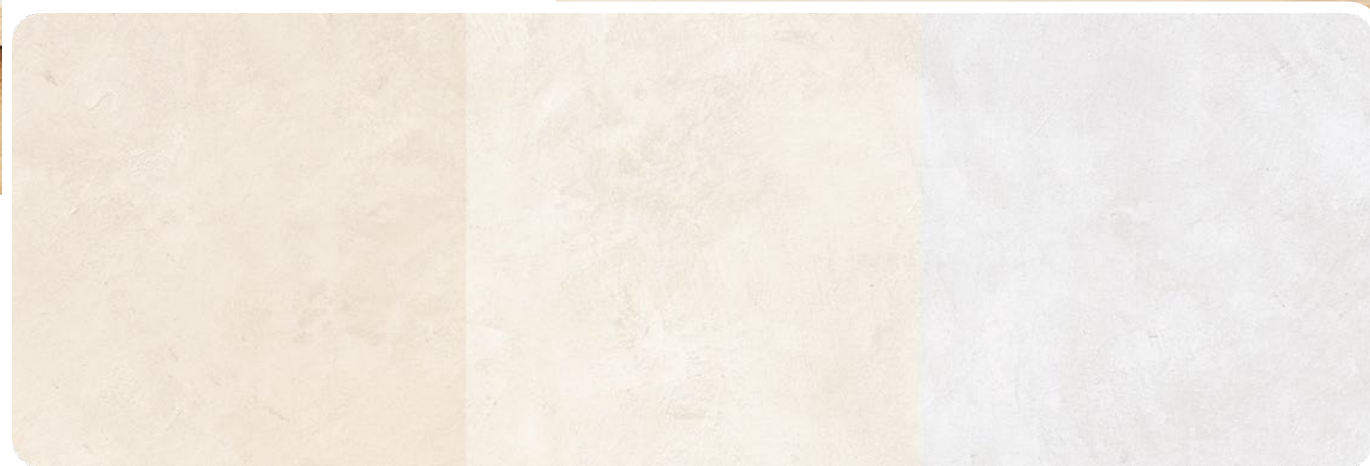
- Masonry wall
- Brickwork
- Plaster
- Skimmed Coat
- Asbestos free substrate

Airless Spray		
Nozzle 1.8 - 2.0 mm	Spray Angle Degree 65° - 80°	Pressure 210 psi/150kg/cm²

STRATO® Cement TEXTURE



Lighting Color Influence



Warm Light

Neutral Light

Cool Light

SCT



SCT 301 – 311

Create everlasting look with Strato® Cement Texture. Whether you are going for the industrial, scandinavian, contemporary or minimalistic style, the backdrop of the cement texture can complete the look.

Create two different patterns with Strato® Cement Texture using different tools and techniques!

Appearance

Low Sheen		High Sheen
Smooth Texture		Rough Texture
Matte		Metallic

Features

- Interior use only



Low VOC
& Odor



Green Choice, Water
Based & Eco-friendly



Formaldehyde
& Lead Free



Crack
Resistant



Anti-chalking &
Efflorescence



Easy Application
& DIY Friendly



Applicable
on Ceiling



Easy to
Touch Up



Easy
Maintenance



Matte
Finishing

Complies to the

- American California Proposition 65
- LEED, U.S. Green Building Council Standards
- Singapore Green Label



SCT

Trowel Pattern

Matte & Smooth Finishing.



SCT-301 Silver Grey



SCT-302 Natural Grey



SCT-303 Shark Grey



SCT-304 Granite Grey



SCT-305 Iron Grey



SCT-306 Charcoal Grey



SCT-307 Metal Grey



SCT-308 Shadow Grey



SCT-309 Ashes Grey



SCT-310 Misty Grey



SCT-311 Dove White



SCT-310 Misty Grey



SCT-309 Ashes Grey



SCT-309 Ashes Grey



SCT-302 Natural Grey



A Project by
RICE
Architecture + Interior + Contract

SCT-305 Iron Grey

Trowel Pattern

Application Technique

Application Video



Preparation:

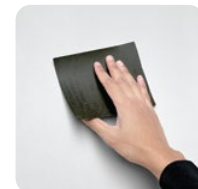
- Cover the edges of surface that won't be painted by masking it with tape, paper or plastic.
- Clean up the wall surface to ensure it is free from dirt and dust.



1 Primer

Roll 2 layers of primer on the entire surface. Allow 30 minutes to dry between the layers.
(The primer can be diluted with maximum 3% of clean water)

Tool: Roller



2 Sanding

Sand the entire surface in circular motion to ensure the surface is smooth.

Tool: 600 Grit Sand Paper

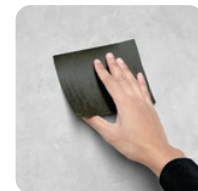


3 Texture Coat

Scrape texture coat randomly to create pattern. Ensure the whole surface area is covered. Then apply second layer.

* Do Not Dilute
(use a larger trowel for a larger pattern, a smaller trowel for smaller pattern)

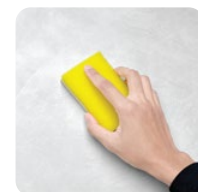
Tool: Stainless Steel Trowel



4 Sanding (Optional)

Sand the entire surface in circular motion to enhance the pattern.

Tool: 600 Grit Sand Paper



5 Topcoat

Apply SR-Top 1 on entire surface using a dry sponge in circular motions.

IMPORTANT: Use a clean and dry sponge/cleaning cloth to wipe the excess topcoat before it dries to avoid the sponge marks.

Tool: Sponge / Cleaning Cloth

IMPORTANT:

Color may vary on application technique & amount of material used.

Dilution Guide:

Primer : Max 3% of clean water.
Texture : Do not dilute.



Packing Data

1 L	Primer
1 L	Texture Coat
0.5 L	Topcoat (SR-Top 1)

Coverage (per set)

WALL	6 - 7 sqm
CEILING	5 - 6 sqm



Tools: Roller, Trowel, Sand Paper (600 Grit), Sponge.



SCT Piccolo Pattern

Matte & Smooth
Finishing.



SCT-301 Silver Grey



SCT-302 Natural Grey



SCT-303 Shark Grey



SCT-304 Granite Grey



SCT-305 Iron Grey



SCT-306 Charcoal Grey



SCT-307 Metal Grey



SCT-308 Shadow Grey



SCT-309 Ashes Grey



SCT-310 Misty Grey



SCT-311 Dove White



SCT-302 Natural Grey



SCT-306 Charcoal Grey



SCT-301 Silver Grey

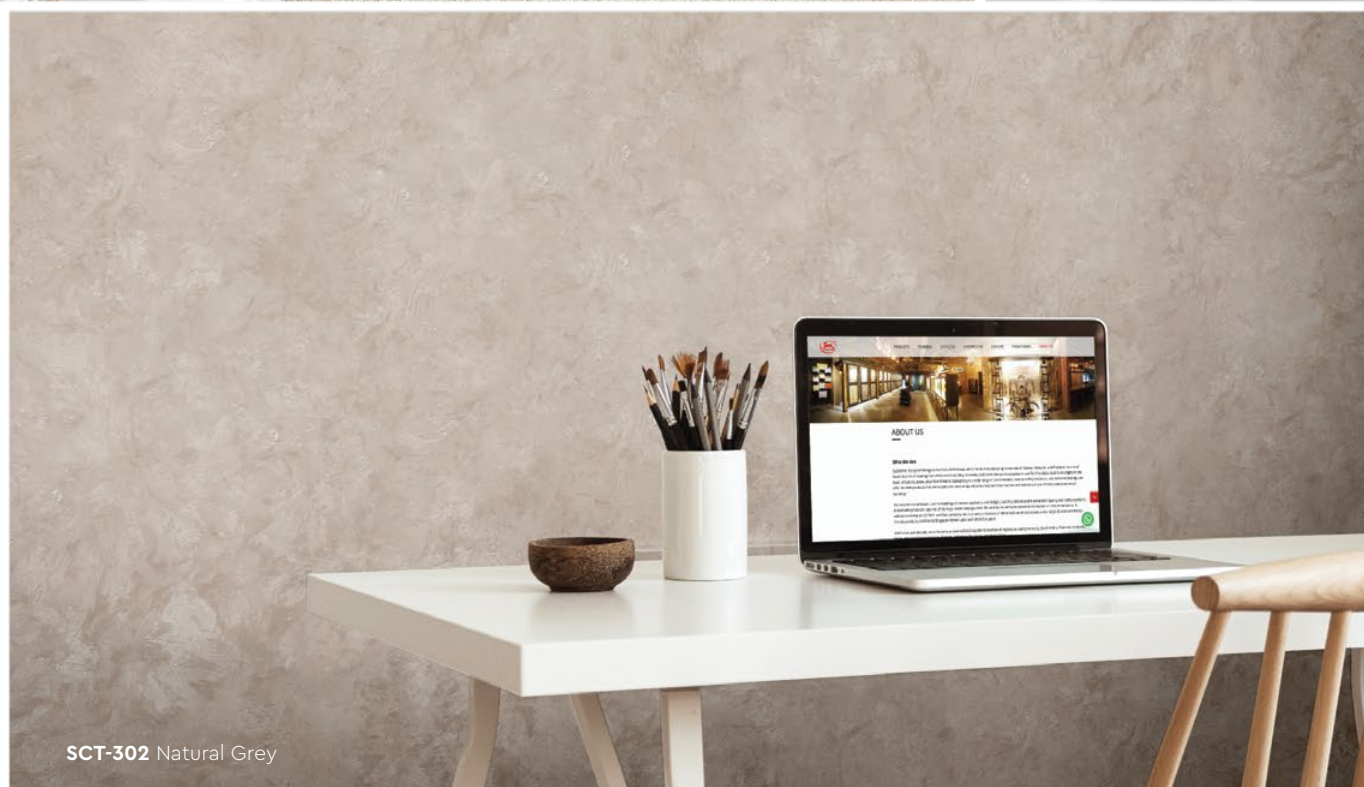




SCT-309 Ashes Grey



SCT-304 Granite Grey



SCT-302 Natural Grey

Piccolo Pattern

Application Technique

Application Video



Preparation:

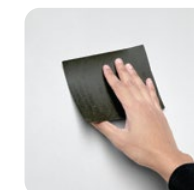
- Cover the edges of surface that won't be painted by masking it with tape, paper or plastic.
- Clean up the wall surface to ensure it is free from dirt and dust.



1 Primer

Roll 2 layers of primer on the entire surface. Allow 30 minutes to dry between the layers.
(The primer can be diluted with maximum 3% of clean water)

Tool: Roller



2 Sanding

Sand the entire surface in circular motion to ensure the surface is smooth.

Tool: 600 Grit Sand Paper



3 Texture Coat

Step A : Trowel

Scrape texture coat evenly onto the surface.
(Do Not Dilute)

Tool: Stainless Steel Trowel



Step B : Piccolo

Use piccolo tool to create swirl texture effects by moving with random circular motion.

Tool: Piccolo Tool

Repeat Step A & B for a 2nd layer of texture coat



4 Topcoat

Apply SR-Top 1 on entire surface using a dry sponge in circular motions.

IMPORTANT: Use a clean and dry sponge/cleaning cloth to wipe the excess topcoat before it dries to avoid the sponge marks.

Tool: Sponge / Cleaning Cloth

IMPORTANT:

Color may vary on application technique & amount of material used.

Dilution Guide:

Primer : Max 3% of clean water.
Texture : Do not dilute.



Packing Data

1 L	Primer
1 L	Texture Coat
0.5 L	Topcoat (SR-Top 1)

Coverage (per set)

WALL	6 - 7 sqm
CEILING	5 - 6 sqm



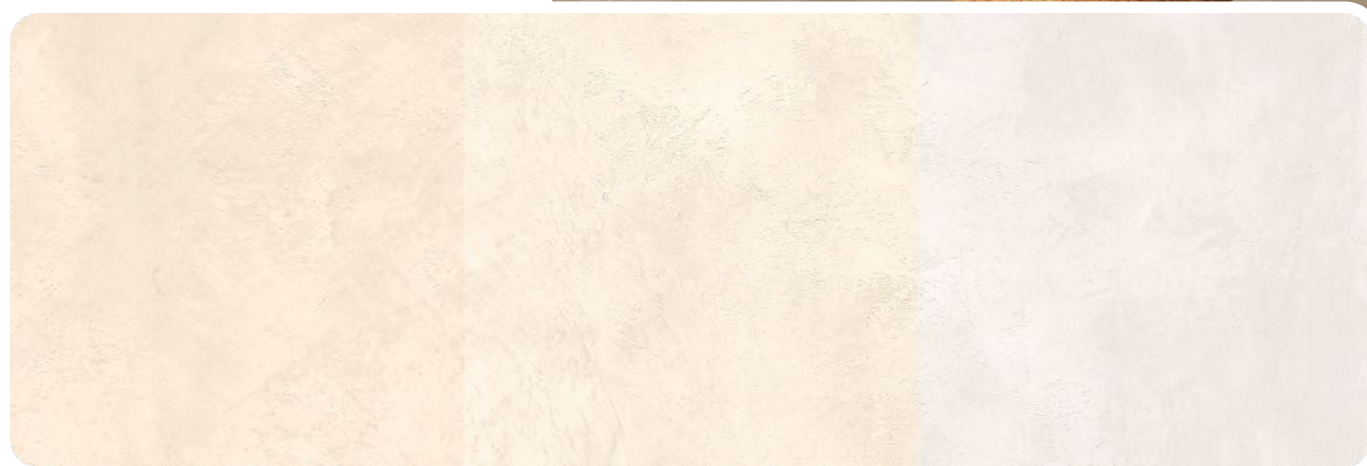
Tools: Roller, Trowel, Piccolo, Sand Paper (600 Grit), & Sponge.



STRATO® Velours



Lighting Color Influence



Warm Light

Neutral Light

Cool Light

SVL



SVL 401 – 426

Rich velvety layers of color to enhance the interior space. Each color brings out a different mood and ambience, find a color that matches your personality

Create two different patterns with Strato® Velours using different tools and techniques!

Appearance

Low Sheen		High Sheen
Smooth Texture		Rough Texture
Matte		Metallic

Features

- Interior use only



Low VOC & Odor



Green Choice, Water Based & Eco-friendly



Formaldehyde & Lead Free



Crack Resistant



Anti-chalking & Efflorescence



Easy Application & DIY Friendly



Applicable on Ceiling



Easy to Touch Up



Easy Maintenance



Matte Finishing

Complies to the

- American California Proposition 65
- LEED, U.S. Green Building Council Standards
- Singapore Green Label



SVL
**Trowel
 Pattern**
 Matte & Smooth
 Finishing.



SVL-401 Cloudy Grey



SVL-402 Mushroom Beige



SVL-403 Hazel Wood



SVL-404 Summer Sahara



SVL-405 Walnut Leather



SVL-406 Brocade Blue



SVL-407 Deep Marine



SVL-408 Royal Denim



SVL-409 Violet Memory



SVL-410 Rosy Mauve



SVL-411 Frosted Mint



SVL-406 Brocade Blue

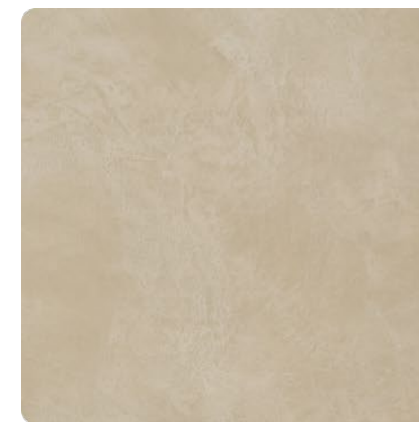


SVL-401 Cloudy Grey

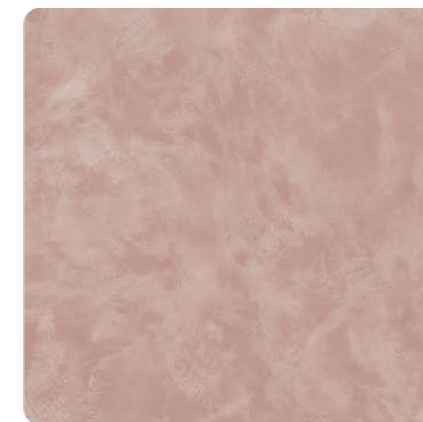


SVL-404 Summer Sahara

SVL-417 Vanilla Cream



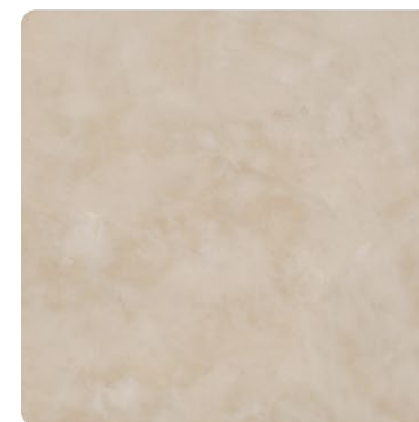
SVL-415 Lime Mist



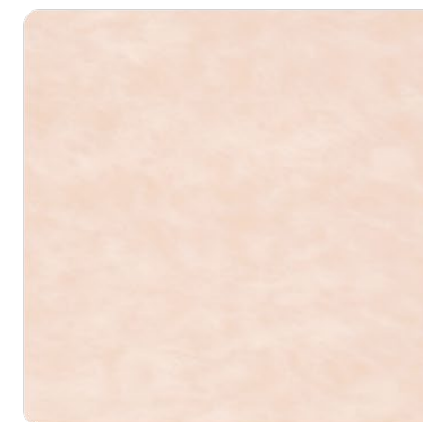
SVL-416 Flamingo Blush



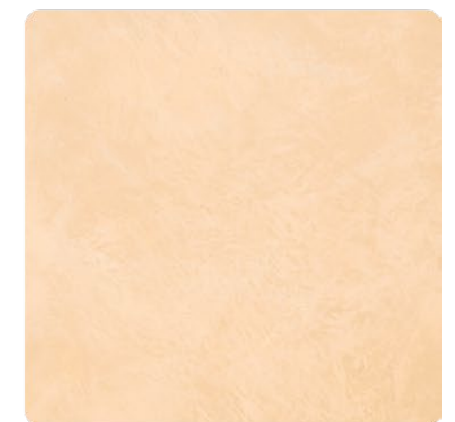
SVL-417 Vanilla Cream



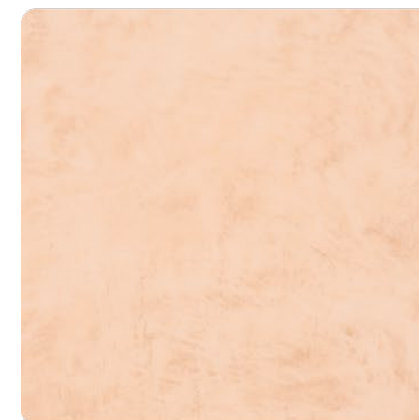
SVL-418 Oat Beige



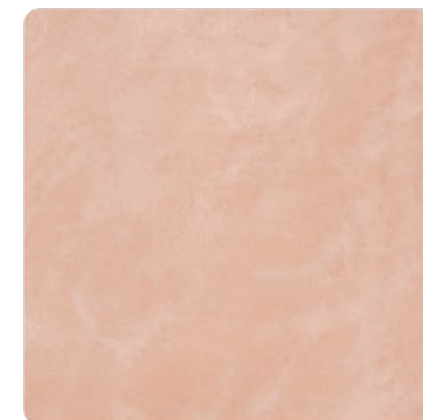
SVL-419 Blush Cream



SVL-420 Wheat Beige



SVL-421 Light Apricot



SVL-422 Coral Peach



SVL-423 Lime Citrus



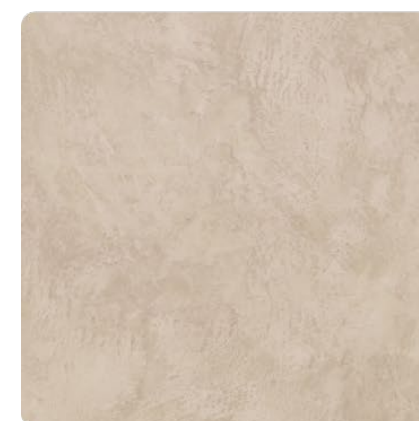
SVL-412 Vivid Emerald



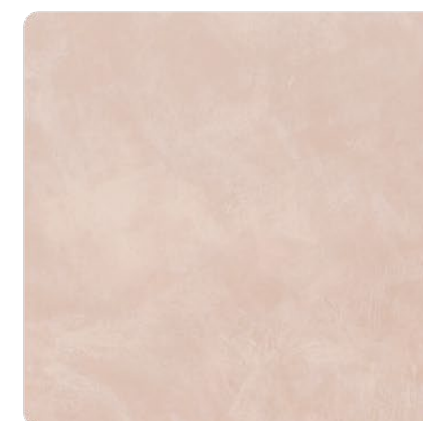
SVL-413 Hunter Green



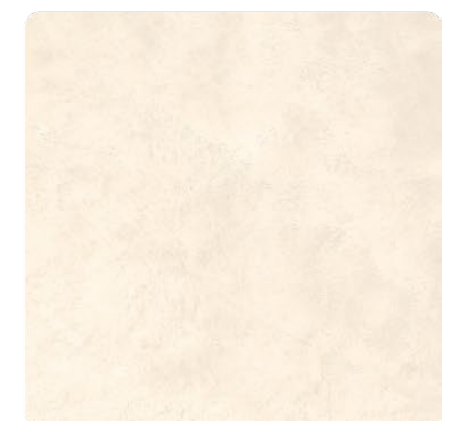
SVL-414 Herbal Garden



SVL-424 Dried Basil



SVL-425 Mauve Chalk



SVL-426 Dewy Ivory



SVL-412 Vivid Emerald



SVL-417 Vanilla Cream



SVL-410 Rosy Mauve



Packing Data

1 L	Primer
1 L	Texture Coat
0.5 L	Topcoat (SR-Top 1)

Coverage (per set)

WALL	6 - 7 sqm
CEILING	5 - 6 sqm

Trowel Pattern

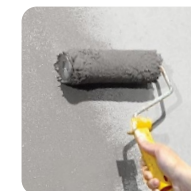
Application Technique

Application Video



Preparation:

- Cover the edges of surface that won't be painted by masking it with tape, paper or plastic.
- Clean up the wall surface to ensure it is free from dirt and dust.

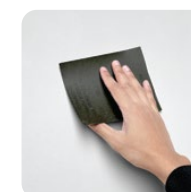


1 Primer

Roll 2 layers of primer on the entire surface. Allow 30 minutes to dry between the layers.

(The primer can be diluted with maximum 3% of clean water)

Tool: Roller



2 Sanding

Sand the entire surface in circular motion to ensure the surface is smooth.

Tool: 600 Grit Sand Paper

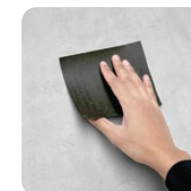


3 Texture Coat

Scrape texture coat randomly to create pattern. Ensure the whole surface area is covered. Then apply second layer.

* Do Not Dilute
(use a larger trowel for a larger pattern, a smaller trowel for smaller pattern)

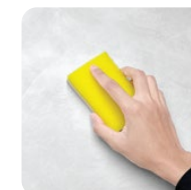
Tool: Stainless Steel Trowel



4 Sanding (Optional)

Sand the entire surface in circular motion to enhance the pattern.

Tool: 600 Grit Sand Paper



5 Topcoat

Apply SR-Top 1 on entire surface using a dry sponge in circular motions.

IMPORTANT: Use a clean and dry sponge/cleaning cloth to wipe the excess topcoat before it dries to avoid the sponge marks.

Tool: Sponge / Cleaning Cloth

IMPORTANT:

Color may vary on application technique & amount of material used.

Dilution Guide:

Primer : Max 3% of clean water.
Texture : Do not dilute.



Tools: Roller, Trowel, Sand Paper (600 Grit), Sponge.



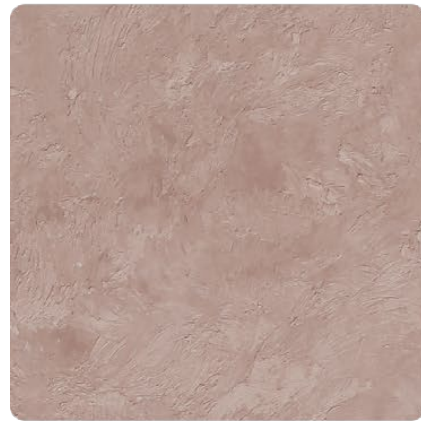
SVL
**Piccolo
 Pattern**
 Matte & Smooth
 Finishing.



SVL-401 Cloudy Grey



SVL-402 Mushroom Beige



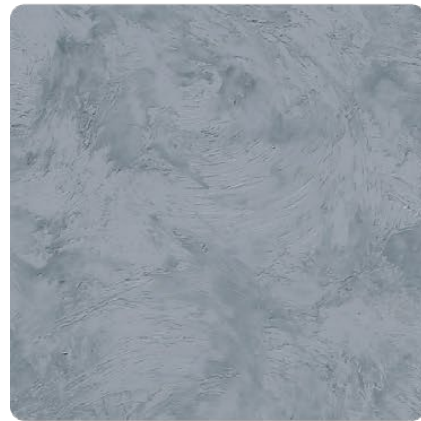
SVL-403 Hazel Wood



SVL-404 Summer Sahara



SVL-405 Walnut Leather



SVL-406 Brocade Blue



SVL-407 Deep Marine



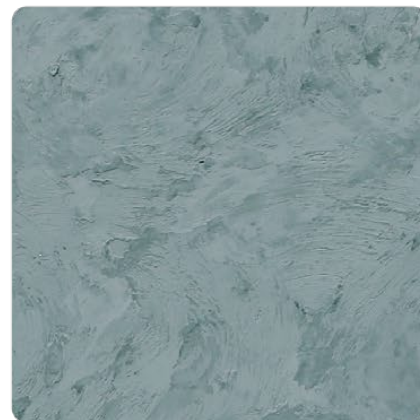
SVL-408 Royal Denim



SVL-409 Violet Memory



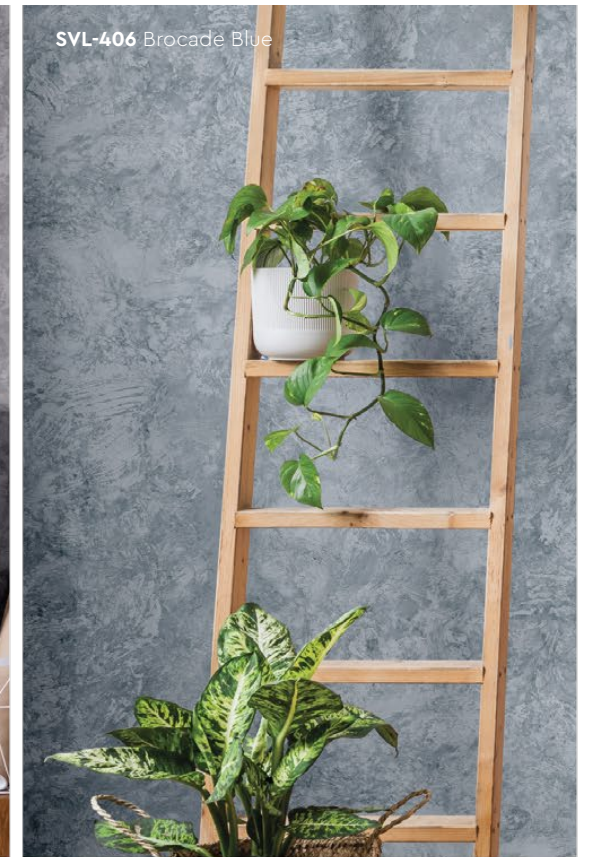
SVL-410 Rosy Mauve



SVL-411 Frosted Mint



SVL-401 Cloudy Grey



SVL-406 Brocade Blue



SVL-402 Mushroom Beige





SVL-414 Herbal Garden



SVL-412 Vivid Emerald



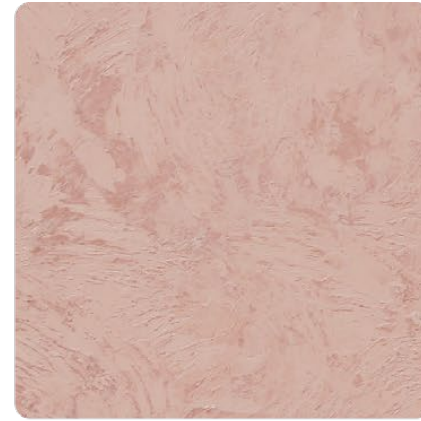
SVL-413 Hunter Green



SVL-414 Herbal Garden



SVL-415 Lime Mist



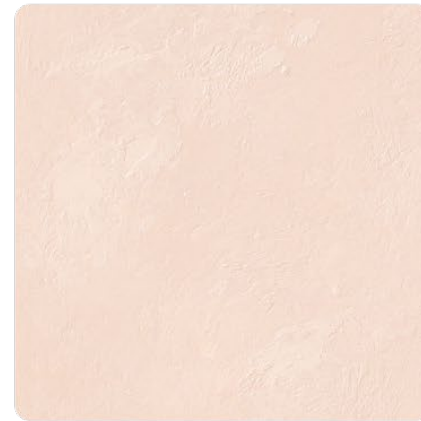
SVL-416 Flamingo Blush



SVL-417 Vanilla Cream



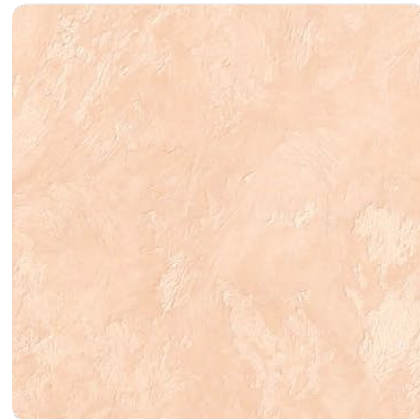
SVL-418 Oat Beige



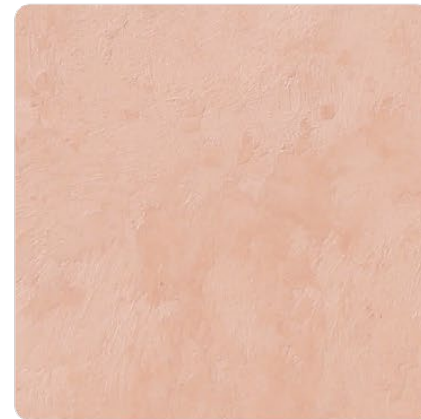
SVL-419 Blush Cream



SVL-420 Wheat Beige



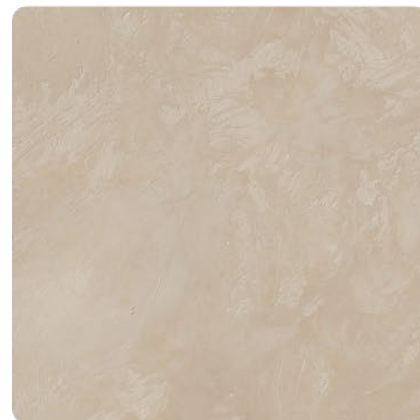
SVL-421 Light Apricot



SVL-422 Coral Peach



SVL-423 Lime Citrus



SVL-424 Dried Basil



SVL-425 Mauve Chalk



SVL-426 Dewy Ivory



SVL-420 Wheat Beige



SVL-425 Mauve Chalk



SVL-422 Coral Peach



Packing Data

1 L	Primer
1 L	Texture Coat
0.5 L	Topcoat (SR-Top 1)

Coverage (per set)

WALL	6 - 7 sqm
CEILING	5 - 6 sqm

Piccolo Pattern

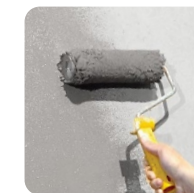
Application Technique

Application Video



Preparation:

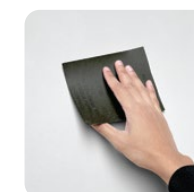
- Cover the edges of surface that won't be painted by masking it with tape, paper or plastic.
- Clean up the wall surface to ensure it is free from dirt and dust.



1 Primer

Roll 2 layers of primer on the entire surface. Allow 30 minutes to dry between the layers.
(The primer can be diluted with maximum 3% of clean water)

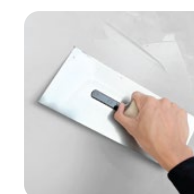
Tool: Roller



2 Sanding

Sand the entire surface in circular motion to ensure the surface is smooth.

Tool: 600 Grit Sand Paper



3 Texture Coat

Step A : Trowel

Scrape texture coat evenly onto the surface.
(Do Not Dilute)

Tool: Stainless Steel Trowel

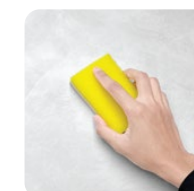


Step B : Piccolo

Use piccolo tool to create swirl texture effects by moving with random circular motion.

Tool: Piccolo Tool

Repeat Step A & B for a 2nd layer of texture coat



4 Topcoat

Apply SR-Top 1 on entire surface using a dry sponge in circular motions.

IMPORTANT: Use a clean and dry sponge/cleaning cloth to wipe the excess topcoat before it dries to avoid the sponge marks.

Tool: Sponge / Cleaning Cloth

IMPORTANT:

Color may vary on application technique & amount of material used.

Dilution Guide:

Primer : Max 3% of clean water.
Texture : Do not dilute.



Tools: Roller, Trowel, Piccolo, Sand Paper (600 Grit), & Sponge.