

Cnap & Win!
iPad Pro
 Check out our contest!
suzuka.com.my/promotion | T&C Apply



STRATO[®]

CASHMERE & TAFFETA

EDITION
1.2

Chimmery

INTERIOR TEXTURED PAINTS

- Complies to the
- American California Proposition 65 Standard.
 - LEED, U.S. Green Building Council Standard.



Free
Product Training
 For All Industry Professionals
suzuka.com.my/career-training

WALL FINISH PROFESSIONALS



suzuka.com.my
suzuka.group | Hotline : +6012-258 7388



Photos of the products shown in this catalogue may vary in color due to lighting condition & printing. **We suggest you examine actual product samples before ordering.**



CASHMERE & TAFFETA-E1.2-2503

WALL FINISH
 PROFESSIONALS.

SINCE
 1977

SUZUKA®
WALL SEALER PRO

“ Make your wall finishes last longer! ”



Packing Size:

1L

5L

20L

Superior primer for concrete, skimmed or masonry surfaces.

This sealer that has good substrate penetration abilities to increase adhesion of product to prevent chalking or peeling off.

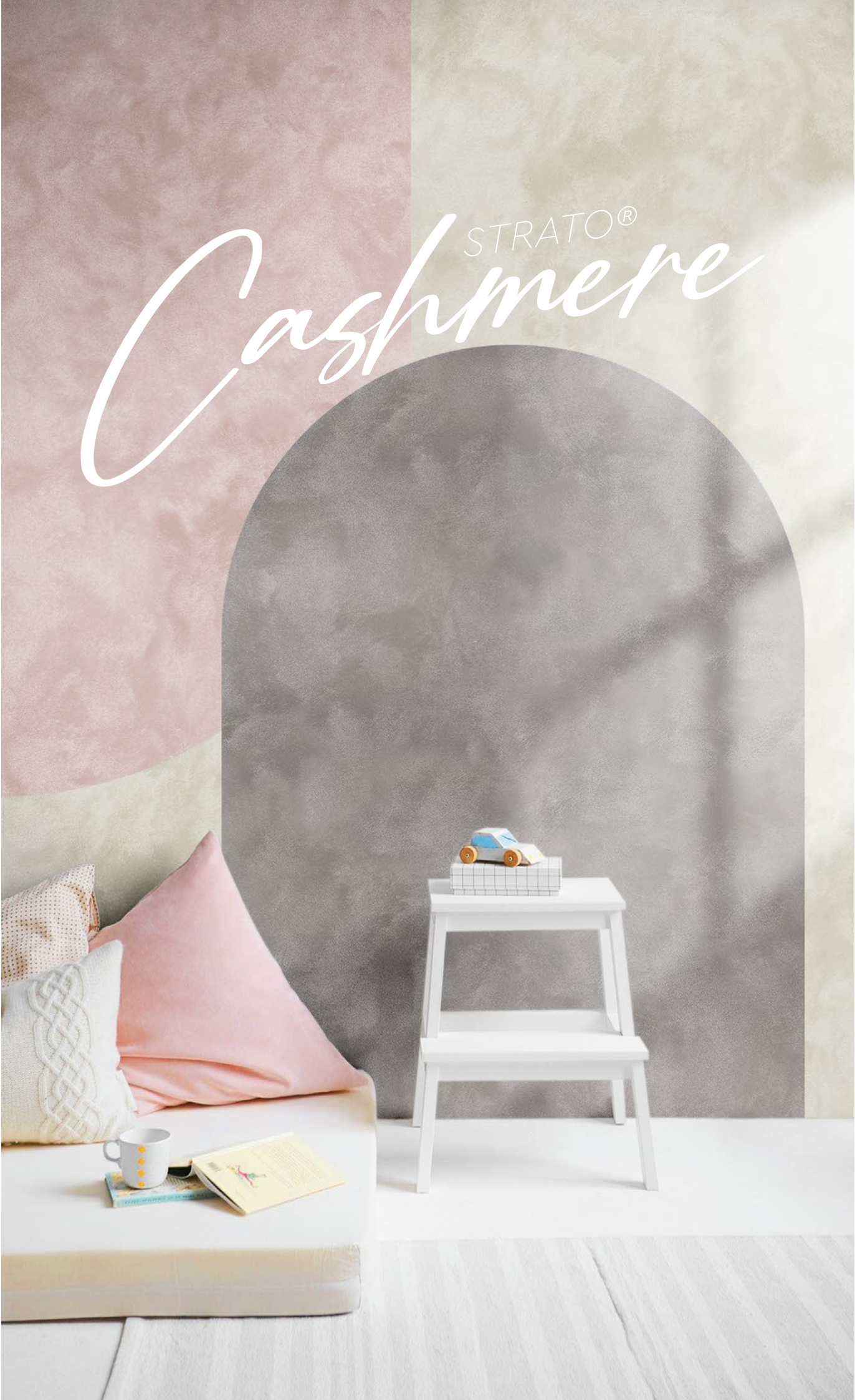
It has excellent alkaline resistance properties that can prevent efflorescence. It is an ideal base coat for any SUZUKA® or any wall finish products.

Coverage	Drying Time (hour)	
6.5 - 8.5 m ² /l/coat	Surface Dry : 1	Substrate Temperature:
	Hard Dry : 5	23°C - 26°C
	Recoating : 5	


- Features:
- Excellent alkaline resistance to prevent efflorescence.
 - Good for new walls and repainting.
 - Prevents skim coat from chalking & peeling off.
 - Extremely good penetration.
 - Excellent adhesion.
 - Exterior and interior use.
 - Applicable with brush, roller or spray gun.

- Suitable for:
- Masonry wall
 - Brickwork
 - Plaster
 - Skimmed Coat
 - Asbestos free substrate

Airless Spray		
Nozzle	Spray Angle Degree	Pressure
1.8 - 2.0 mm	65° - 80°	210 psi/150kg/cm ²



SCH




SCH 001 - 021

Strato® Cashmere embodies the pinnacle of elegance in textured coating. Achieved through smooth layering and delicate craftsmanship, the finished product gives a refined and royal appearance with a lingering hint of sophistication.


Appearance

Low Sheen	<div><div></div><div></div><div></div><div></div><div></div></div>	High Sheen
Smooth Texture	<div><div></div><div></div><div></div><div></div><div></div></div>	Rough Texture
Matte	<div><div></div><div></div><div></div><div></div><div></div></div>	Metallic


Features




Low VOC & Odor




Green Choice, Water Based & Eco-friendly




Formaldehyde & Lead Free



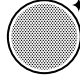
Easy Application & DIY Friendly



Applicable on Ceiling



Easy Maintenance



Slight Metallic Finish

- Complies to the
- American California Proposition 65
 - LEED, U.S. Green Building Council Standards



SCH-001 Pearl White



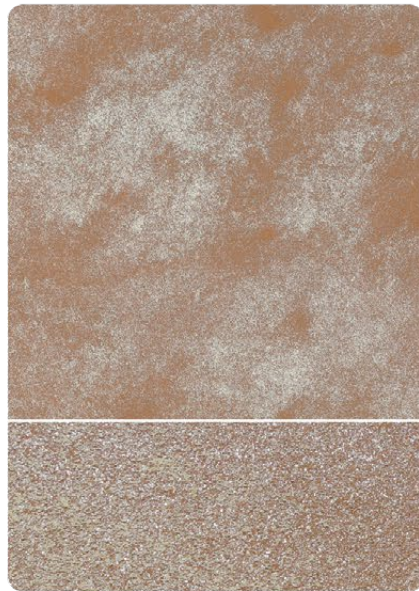
SCH-002 Silver Mist



SCH-003 Silver Slate



SCH-004 Platinum Metal



SCH-005 Bronze Age



SCH-006 Sand Castle Beige



SCH-007 Autumn Beige



SCH-008 Eggshell Beige



SCH-009 Desert Gold



SCH-016 Stardust Silver



All color shown are as close to the actual Suzuka® Strato® colors as modern printing techniques permit, nonetheless, there are still color/tone differences.

We highly recommend seeing actual samples before ordering.



SCH-008 Eggshell Beige





SCH-014 Coral Blush



SCH-015 Powder Blue

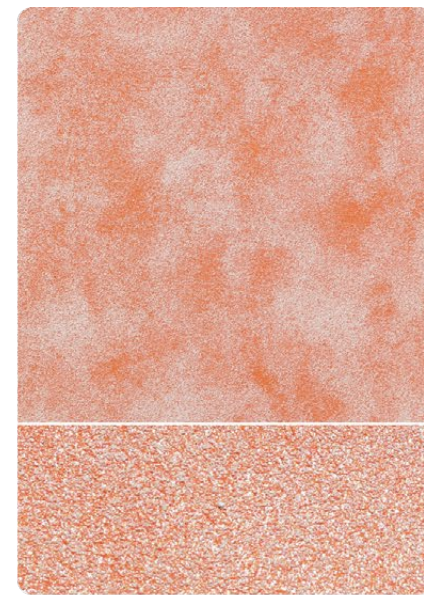


All color shown are as close to the actual Suzuka® Strato® colors as modern printing techniques permit, nonetheless, there are still color/tone differences.

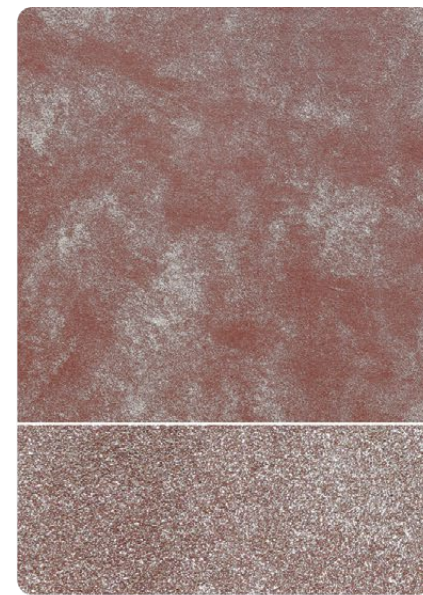
We highly recommend seeing actual samples before ordering.



SCH-010 Honey Yellow



SCH-011 Peach Blossom



SCH-012 Plum Sunset



SCH-013 Baby Doll Pink



SCH-014 Coral Blush



SCH-015 Powder Blue



SCH-016 Stardust Silver



SCH-017 Lace blue



SCH-018 Ash Grey





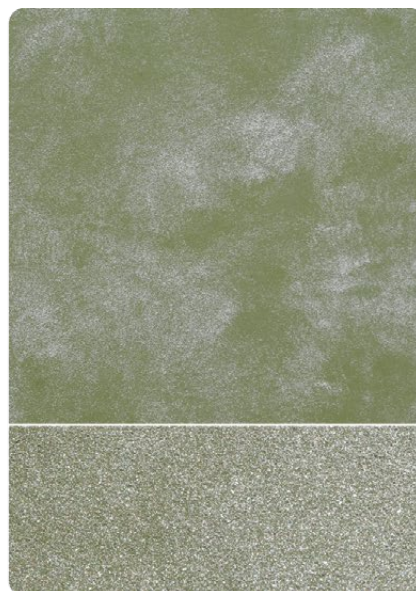
SCH-006 Sand Castle Beige



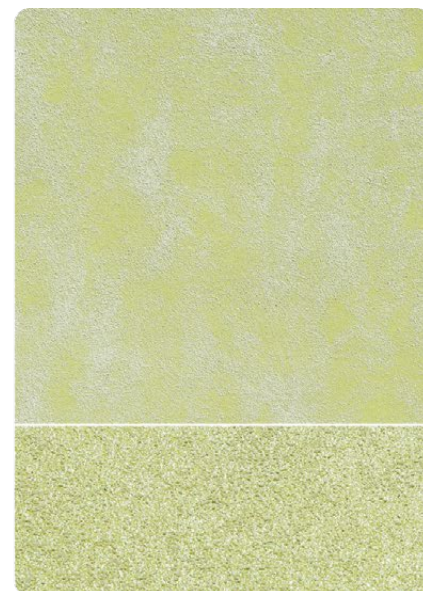
SCH-019 Peacock Blue



SCH-019 Peacock Blue



SCH-020 Olive Tree



SCH-021 Tropical Garden



Packing Data

1 L	Primer
1 L	Texture Coat
1 L	Topcoat (SR-Top 3)

Coverage (per set)

WALL	6 – 7 sqm
CEILING	5 – 6 sqm

Strato® Cashmere

Application Technique

Application Video



Preparation:

- Cover the edges of surface that won't be painted by masking it with tape, paper or plastic.
- Clean up the wall surface to ensure it is free from dirt and dust.



1 Primer

Roll 2 layers of primer on the entire surface. Allow 30 minutes to dry between the layers.
(The primer can be diluted with maximum 3% of clean water)

Tool: Roller



2 Texture Coat

Brush on texture coat in criss cross patterns. Apply 1-2 layers. Ensure the whole surface area is covered.
(Do Not Dilute)

Tool: Brush



3 Flattening

Flatten the entire surface in circular motion to enhance the pattern.

Tool: Plastic Scraper



4 Topcoat

Evenly roll SR-Top 3 on entire surface. Allow to dry for 1 hour.

Tool: Roller

IMPORTANT:

Color may vary on application technique & amount of material used.

Dilution Guide:

Primer : Max 3% of clean water.
Texture : Do not dilute.



Tools: Roller, Brush & Plastic Scraper



STRATO® Taffeta

SRT



SRT 201 – 233

A vibrant color layered in texture and dusted with a shimmering pearl effect crafts a bold and radiant feel onto the wall.

Appearance

Low Sheen						High Sheen
Smooth Texture						Rough Texture
Matte						Metallic

Features

- Interior use only



Low VOC
& Odor



Green Choice, Water
Based & Eco-friendly



Formaldehyde
& Lead Free



Easy Application
& DIY Friendly



Applicable
on Ceiling



Easy
Maintenance



Shimmery
Finish

Complies to the

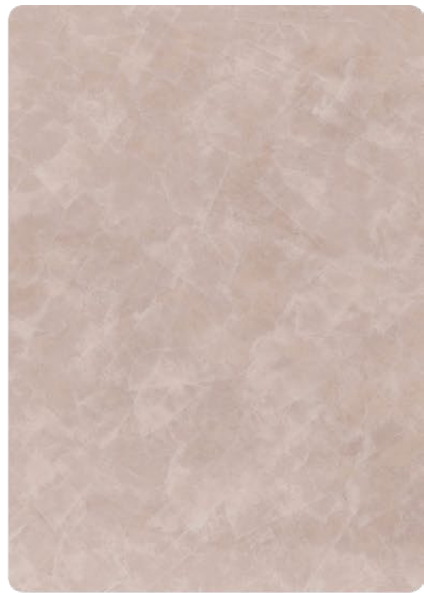
- American California Proposition 65
- LEED, U.S. Green Building Council Standards



SRT-201 Pewter Grey



SRT-203 Light Steel Blue



SRT-209 Light Sephia



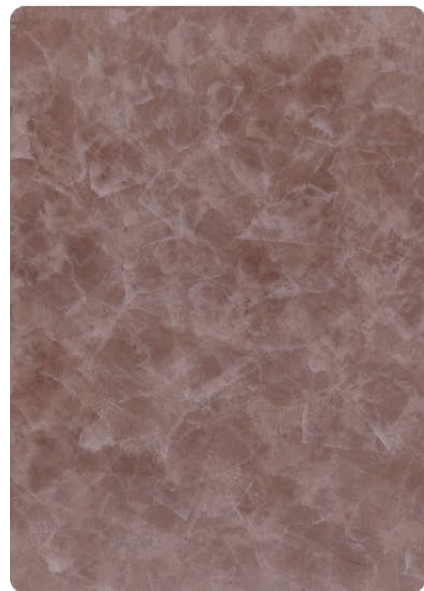
SRT-214 Light Sapphire



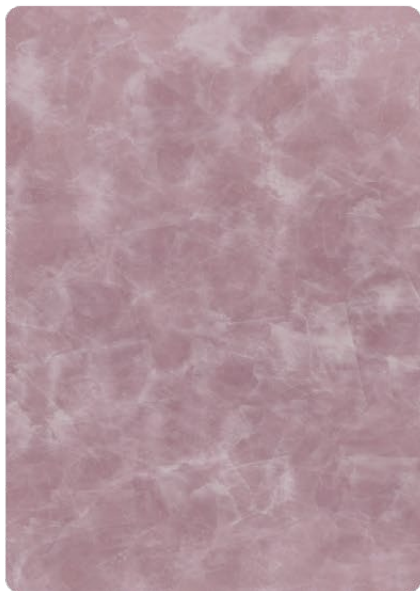
SRT-219 Oyster Beige



SRT-225 Blue Waves



SRT-231 Malted Mocha



SRT-232 Pale Lavender



SRT-233 Ocean Surface



SRT-214 Light Sapphire



SRT-203 Light Steel Blue



All color shown are as close to the actual Suzuka® Strato® colors as modern printing techniques permit, nonetheless, there are still color/tone differences.

We highly recommend seeing actual samples before ordering.





SRT-232 Pale Lavender



Packing Data

1 L	Primer
1 L	Texture Coat
0.5 L	Topcoat (SR-Top 2)

Coverage (per set)

WALL	4.5 sqm
CEILING	3.5 sqm

Strato® Taffeta

Application Technique

Application Video



Preparation:

- Cover the edges of surface that won't be painted by masking it with tape, paper or plastic.
- Clean up the wall surface to ensure it is free from dirt and dust.



1 Primer

Roll 2 layers of primer on the entire surface. Allow 30 minutes to dry between the layers.
(The primer can be diluted with maximum 3% of clean water)

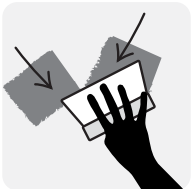
Tool: Roller



2 Sanding (Optional)

Sand the entire surface in circular motion to ensure the surface is smooth.

Tool: 600 Grit Sand Paper



3 Texture Coat

Scrape texture coat in a random criss cross pattern. 2-3 layers. Every layer requires 30 minutes to dry.
(Do Not Dilute)

Tool: Stainless Steel Scrapper



4 Sanding

Sand the entire surface in circular motion to enhance the pattern.

Tool: 600 Grit Sand Paper



5 Topcoat

Scrape on topcoat SR-Top 2 in a random criss cross overlapping patterns. Allow 1 hour to dry.

Taffeta has a **shimmering** pearl effect topcoat. For a **matte** finishing, please request **SR-Top 1**.

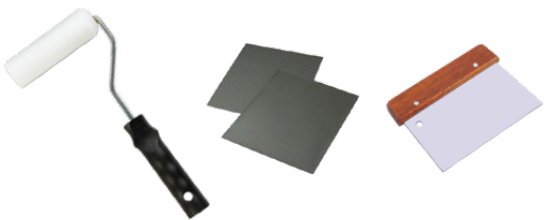
Tool: Stainless Steel Scrapper

IMPORTANT:

Color may vary on application technique & amount of material used.

Dilution Guide:

Primer : Max 3% of clean water.
Texture : Do not dilute.



Tools: Roller, Sand Paper (600 Grit) & Stainless Steel Scrapper.