

*Cnap
& Win!*
iPad Pro

Check out our contest!
suzuka.com.my/promotion | T&C Apply



KASTPANEL

EDITION
03

**CONCRETE
EFFECT PANEL
SERIES**

FOR THE INTERIOR
& UNDER THE ROOF

Free
**Product
Training**

For All Industry
Professionals

suzuka.com.my/career-training

WALL FINISH PROFESSIONALS



suzuka.com.my

suzuka.group | Hotline : +6012-258 7388



Photos of the products shown in this catalogue may vary in color due to lighting condition & printing. **We suggest you examine actual product samples before ordering.**

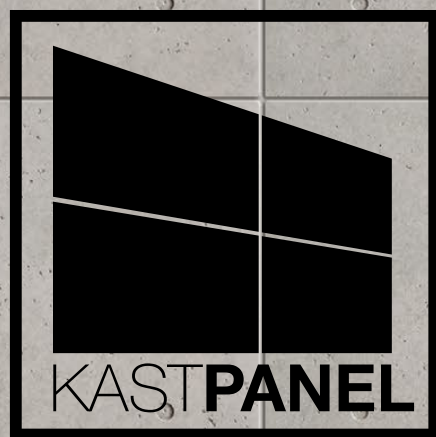


KASTPANEL-E3-2507

WALL FINISH
PROFESSIONALS.

SINCE
1977



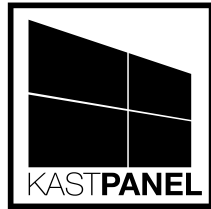


KASTPANEL

The KASTPANEL Collection features pre-cast concrete effect panels in a variety of shades, sizes & patterns. Each piece is uniquely crafted to truly mirror the authentic feel and appearance of real, pre-cast cement. Without sacrificing texture,

Without sacrificing texture, KASTPANELS also manage to be light and compact in nature, rendering them easily transportable and installable. Bringing the stark elegance of exposed concrete to your interior space has never been this easy.





Technical Specifications



NOTE:

Colour may vary due to printing and lighting conditions. Please examine product samples prior to ordering. Colour will vary slightly between pieces.

Colour A

Use with KASTONE® Grouting **GM-11** or **12**

Colour B

Use with KASTONE® Grouting **GM-11**

Colour C

Use with KASTONE® Grouting **GM-11**

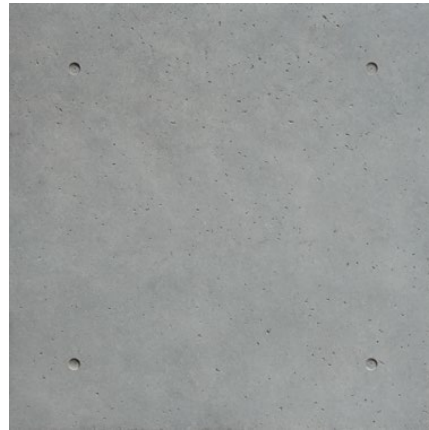
Size 1 | 910 × 910 mm

Thickness : **11 mm** | Weight : **8.2 – 8.6 kg/pc** | Packaging : **4pcs/1pc**

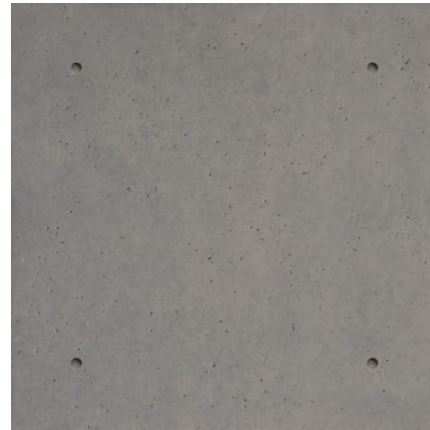
KPC-009-A



KPC-009-B



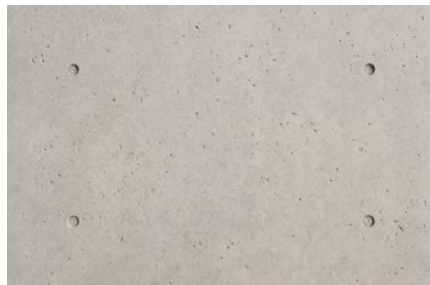
KPC-009-C



Size 2 | 600 × 910 mm

Thickness : **11 mm** | Weight : **5.2 – 5.7 kg/pc** | Packaging : **6pcs/1pc**

KPC-006-A



KPC-006-B



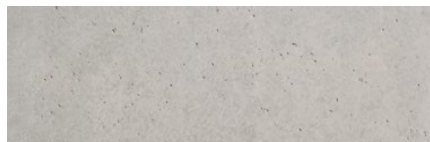
KPC-006-C



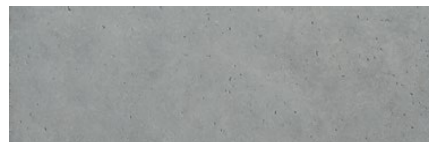
Size 3 | 300 × 910 mm

Thickness : **11 mm** | Weight : **2.6 – 3.0 kg/pc** | Packaging : **10pcs/2pc**

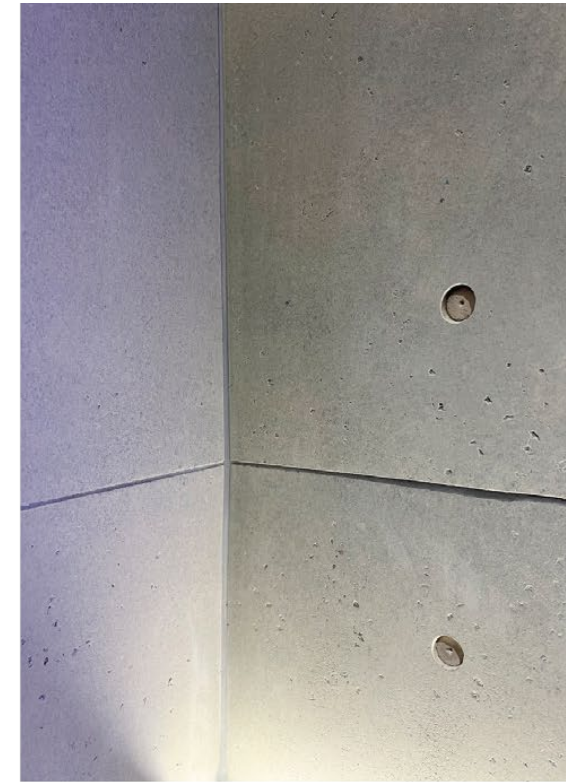
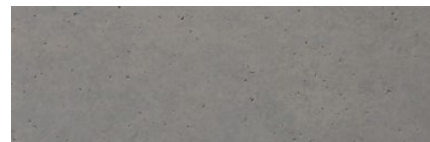
KPC-003-A

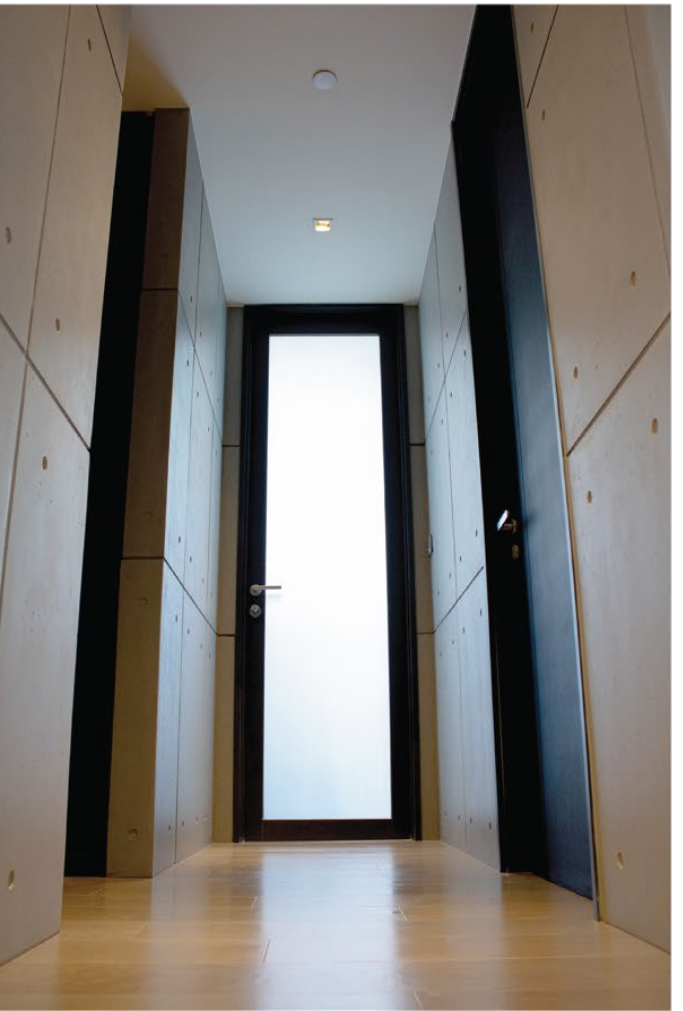


KPC-003-B

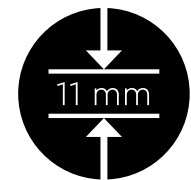


KPC-003-C

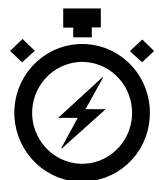




Product Features



Slim & Compact



Quick & Easy to Install



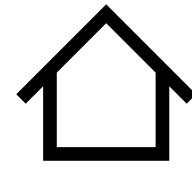
Easy Maintenance



Lightweight



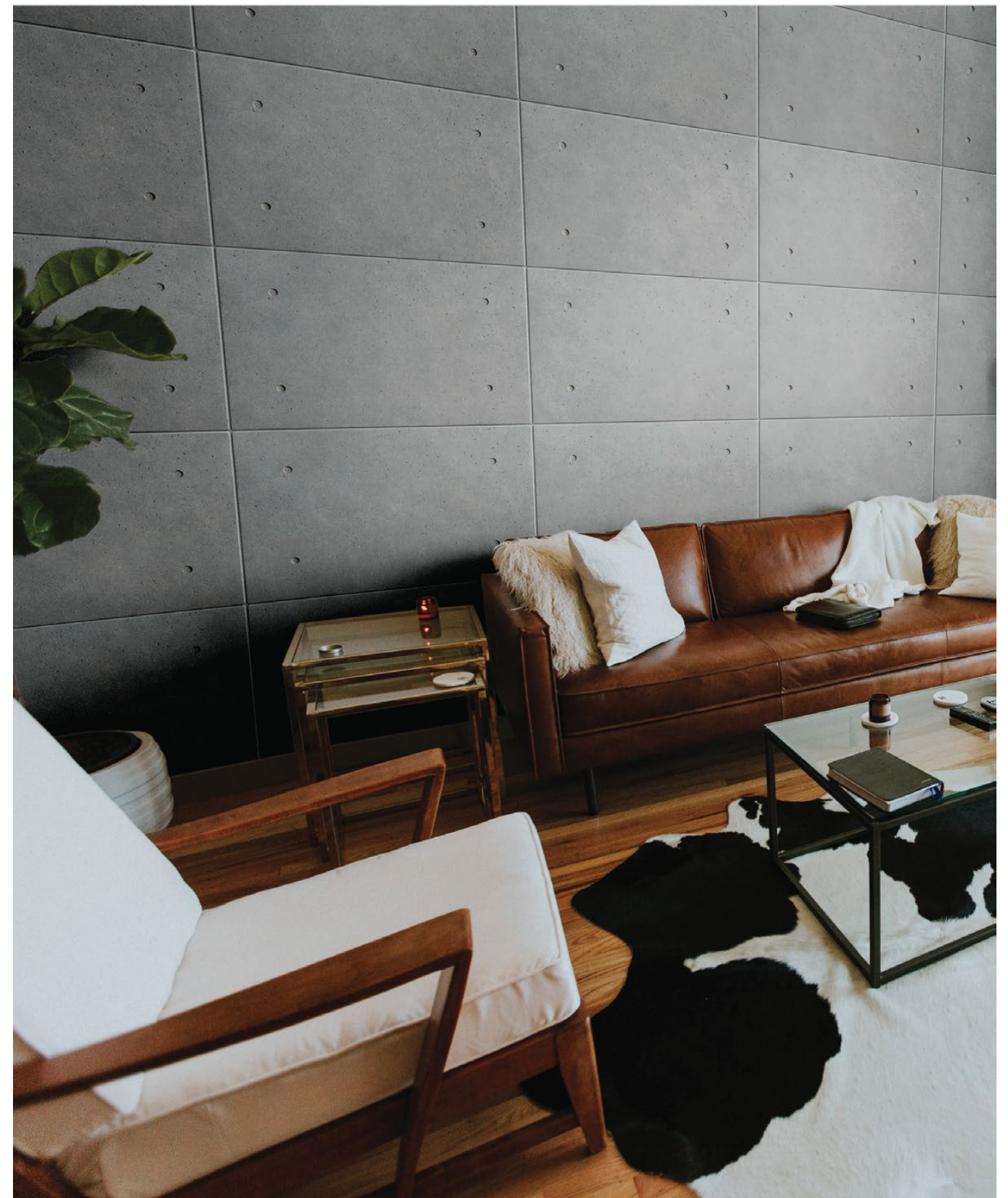
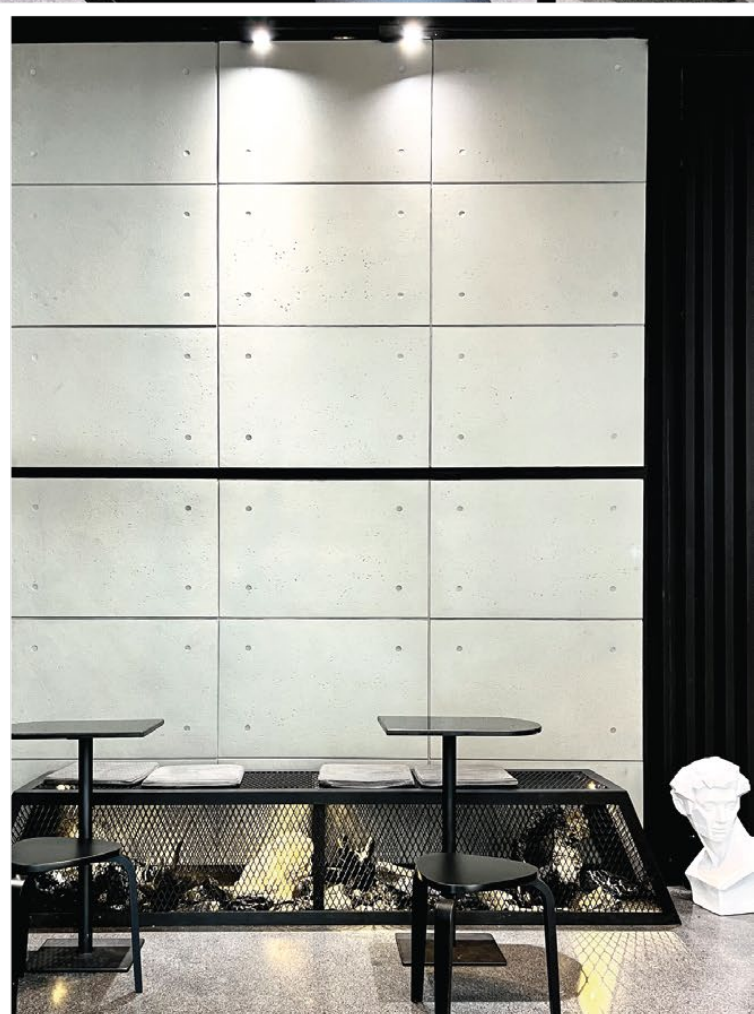
Environmentally Friendly

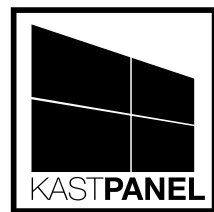


Under the Roof Only



For exterior use, please check out **ECES: Concrete Effect Coating Collection**

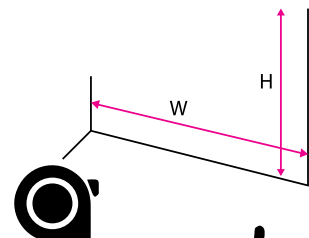




Installation Instructions

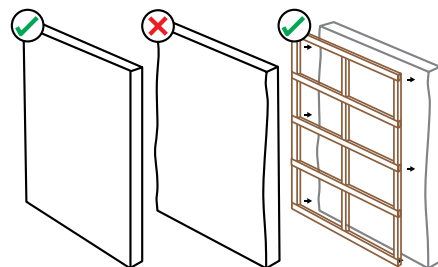
Step 1

Measure the dimensions of your wall (W x H).



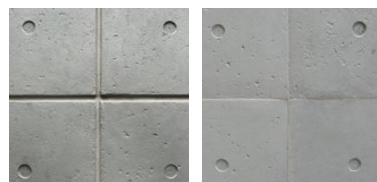
Step 2

Ensure your wall surface is non-wavy, dry, and solid. If your surface is too wavy for the panels to be nailed in flatly, a wooden frame can be built as a backing for the panels.



Step 3

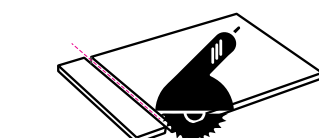
Plan the grouting design and panel layout. (1) Pick the size and colour of the panels. (2) Choose the width of the grouting, or use none at all.



10 mm Grouting No Grouting

Step 4

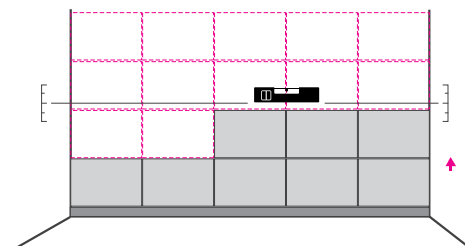
Some panels may need to be trimmed to fit your wall dimensions.



Important: Always keep your hands clean during trimming & installation.

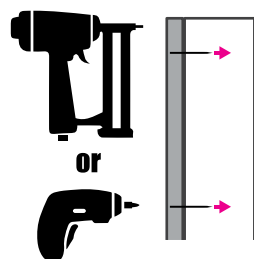
Step 5

Install the panels working from the bottom upwards. For installation with grouting, the use of spacers and a leveler is recommended.



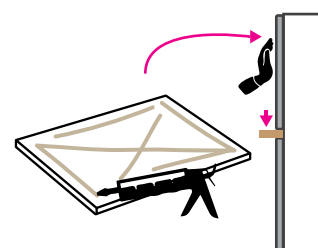
Step 6A (Nail Gun/Drill)

Use a **nail gun** (recommended) or a **drill** with wall plugs to affix the panels. Ensure the centre and sides of the panels are tightly secured to the wall.



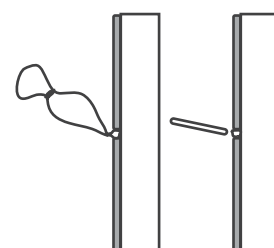
OR Step 6B (Construction Adhesive)

Apply **construction adhesive** on the back of the panel and stick to the wall. Hold the board to ensure it is in place, use a spacer to support the grouting.



Step 7

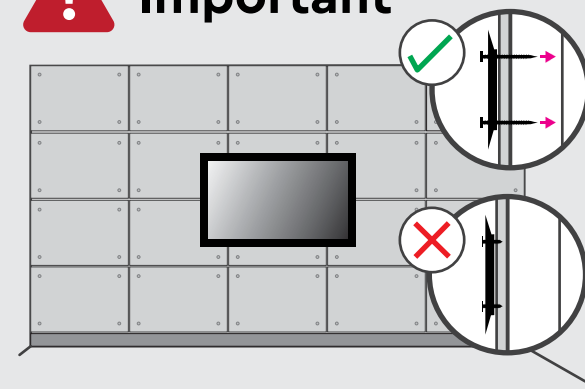
Cover the nailed areas and the grouting between the panels with **KASTONE® GROUTING**.



Recommended Tools

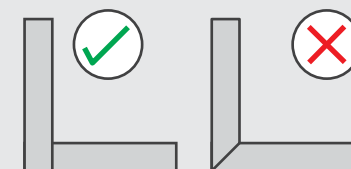


Important



- If you wish to secure anything to/on top of these panels, ensure the items are also secured to the existing wall/substrate behind. KASTPANEL is not suitable for supporting external items.
- KASTPANEL is not suitable for installation on wavy or unstable surfaces.
- KASTPANEL is not suitable for areas containing high moisture.
- Do not bend KASTPANELS.
- KASTPANEL corners are fragile.
- Do not leave KASTPANELS resting against the wall.
- KASTPANEL is not suitable for exteriors/outdoors. To find a similar concrete finish for your exteriors, please see our SUZUKA® ECES Collection suzuka.com.my.

Managing Corners & Edges



Maintenance

Do not clean panels with liquids. Dusting or wiping with a dry cloth is sufficient.

How to touch up the nail/screw mark?

- Mix the filler with 10-15% water to create a paste.
- Fill the marks with the paste only in indented area, do NOT overfill.
- Remove all excess material around the mark with sponge or clean brush.
- Allow the paste to dry for 4 hours.
- Use a small brush to dab the paint onto the area, do NOT paint around the area.



Superior primer for concrete, skimmed or masonry surfaces.

This sealer that has good substrate penetration abilities to increase adhesion of product to prevent chalking or peeling off.

It has excellent alkaline resistance properties that can prevent efflorescence. It is an ideal base coat for any SUZUKA® or any wall finish products.

Coverage	Drying Time (hour)	
6.5 - 8.5 m ² /l/coat	Surface Dry :	1
	Hard Dry :	5
	Recoating :	5
	Substrate Temperature:	23°C - 26°C

- Features:
- Excellent alkaline resistance to prevent efflorescence.
 - Good for new walls and repainting.
 - Prevents skim coat from chalking & peeling off.
 - Extremely good penetration.
 - Excellent adhesion.
 - Exterior and interior use.
 - Applicable with brush, roller or spray gun.

- Suitable for:
- Masonry wall
 - Brickwork
 - Plaster
 - Skimmed Coat
 - Asbestos free substrate

Airless Spray		
Nozzle	Spray Angle Degree	Pressure
1.8 - 2.0 mm	65° - 80°	210 psi/150kg/cm ²