

*Cnap & Win!*  
**iPad Pro**  
 Check out our contest!  
[suzuka.com.my/promotion](http://suzuka.com.my/promotion) | T&C Apply



STRATO<sup>®</sup>  
**SATIN**



EDITION  
**2.1**

*Smooth & Pearlescent*  
 INTERIOR TEXTURED PAINTS

- Complies to the
- American California Proposition 65 Standard.
  - LEED, U.S. Green Building Council Standard.



WALL FINISH PROFESSIONALS.

SINCE 1977

*Free*  
**Product Training**

For All Industry Professionals

[suzuka.com.my/career-training](http://suzuka.com.my/career-training)

**WALL FINISH PROFESSIONALS**



[suzuka.com.my](http://suzuka.com.my)

[f](https://www.facebook.com/suzuka.group) [i](https://www.instagram.com/suzuka.group) [t](https://www.tiktok.com/@suzuka.group) [y](https://www.youtube.com/suzuka.group) **suzuka.group** | Hotline : +6012-258 7388

Photos of the products shown in this catalogue may vary in color due to lighting condition & printing. **We suggest you examine actual product samples before ordering.**



SATIN-E2.1-2505



# STRATO® Satin




## Lighting Color Influence



Warm Light

Neutral Light

Cool Light

 All color shown are as close to the actual Suzuka® Strato® colors as modern printing techniques permit, nonetheless, there are still color/tone differences. **We highly recommend seeing actual samples before ordering.**

# STS



**STS 501 – 509**

The Strato® Satin collection highlights an array of soft-hued silky colours, creating a creamy and pearly finish for a sophisticated and refined look.

Pick from a range of light to dark pastel tones to match any kind of environment, whether it's a bedroom, café, or office space.

### Appearance

Low Sheen	<input type="radio"/>	<input checked="" type="radio"/>	<input type="radio"/>	<input type="radio"/>	<input type="radio"/>	High Sheen
Smooth Texture	<input checked="" type="radio"/>	<input type="radio"/>	<input type="radio"/>	<input type="radio"/>	<input type="radio"/>	Rough Texture
Matte	<input type="radio"/>	<input checked="" type="radio"/>	<input type="radio"/>	<input type="radio"/>	<input type="radio"/>	Metallic

### Features

• Interior use only



Low VOC & Odor



Green Choice, Water Based & Eco-friendly



Formaldehyde & Lead Free



Easy Application & DIY Friendly



Applicable on Ceiling



Easy to Touch Up



Easy Maintenance



Satin Finish

Complies to the

- American California Proposition 65
- LEED, U.S. Green Building Council Standards



STS-501 Floral White



STS-502 Seashell



STS-503 Misty Rose



STS-501 Floral White



STS-502 Seashell



All color shown are as close to the actual Suzuka® Strato® colors as modern printing techniques permit, nonetheless, there are still color/tone differences.

**We highly recommend seeing actual samples before ordering.**



STS-504 Peach Puff



STS-504 Peach Puff



STS-506 Ash Blonde



STS-506 Ash Blonde



STS-506 Ash Blonde



All color shown are as close to the actual Suzuka® Strato® colors as modern printing techniques permit, nonetheless, there are still color/tonne differences.

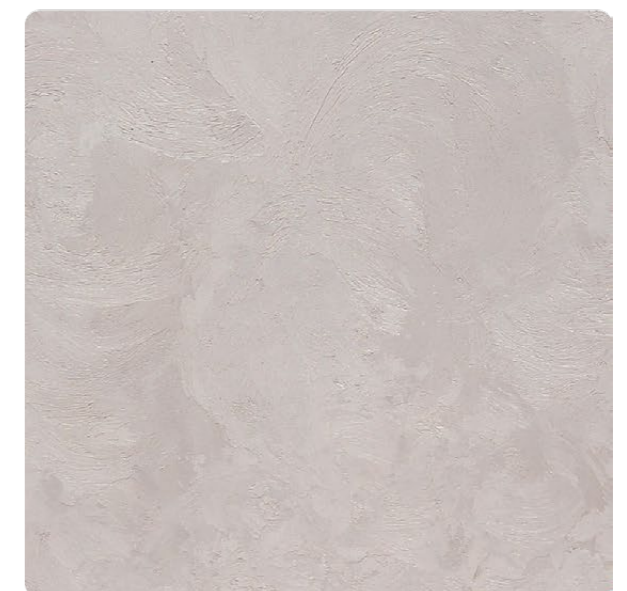
**We highly recommend seeing actual samples before ordering.**



STS-504 Peach Puff



STS-505 Milky Latte



STS-506 Ash Blonde



STS-505 Milky Latte



STS-508 Pale Green



STS-507 Slate Grey



STS-507 Slate Grey



STS-508 Pale Green



STS-505 Milky Latte



All color shown are as close to the actual Suzuka® Strato® colors as modern printing techniques permit, nonetheless, there are still color/tone differences.

**We highly recommend seeing actual samples before ordering.**



STS-509 Rust



Strato® Satin

# Application Technique

Application Video



Preparation:

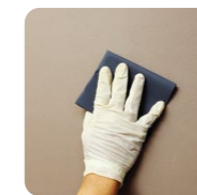
- Cover the edges of surface that won't be painted by masking it with tape, paper or plastic.
- Clean up the wall surface to ensure it is free from dirt and dust.



## 1 Primer

Roll 2 layers of primer on the entire surface. Allow 30 minutes to dry between the layers. (The primer can be diluted with maximum 3% of clean water)

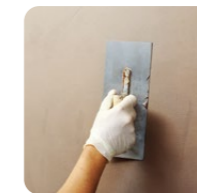
**Tool:** Roller



## 2 Sanding

Sand the entire surface in circular motion to ensure the surface is smooth.

**Tool:** 600 Grit Sand Paper



## 3 Texture Coat

**Step A : Trowel**

Scrape texture coat evenly onto the surface. (Do Not Dilute)

**Tool:** Stainless Steel Trowel



**Step B : Piccolo**

Use piccolo tool to create texture effects by moving with random motion. Let dry for 30 to 40 minutes.

**Tool:** Piccolo Tool

**IMPORTANT:**

Color may vary on application technique & amount of material used.

**Dilution Guide:**

Primer : Max 3% of clean water.  
Texture : Do not dilute.



## Packing Data

1 L	Primer
1 L	Texture Coat

\* Piccolo tool is sold separately

**Coverage** (per set)

WALL	6 - 7 sqm
CEILING	5 - 6 sqm

## SUZUKA® WALL SEALER PRO

“ Make your wall finishes last longer! ”



**Superior primer for concrete, skimmed or masonry surfaces.**

This sealer that has good substrate penetration abilities to increase adhesion of product to prevent chalking or peeling off. It has excellent alkaline resistance properties that can prevent efflorescence. It is an ideal base coat for any SUZUKA® or any wall finish products.

Packing Size:

1L 5L 20L

Coverage	Drying Time (hour)		
6.5 - 8.5 m <sup>2</sup> /l/coat	Surface Dry : 1	Hard Dry : 5	Recoating : 5
	Substrate Temperature: 23°C - 26°C		

Suitable for:

- Masonry wall
- Brickwork
- Plaster
- Skimmed Coat
- Asbestos free substrate

Features:

- Excellent alkaline resistance to prevent efflorescence.
- Good for new walls and repainting.
- Prevents skim coat from chalking & peeling off.
- Extremely good penetration.
- Excellent adhesion.
- Exterior and interior use.
- Applicable with brush, roller or spray gun.

Airless Spray	Nozzle 1.8 - 2.0 mm	Spray Angle Degree 65° - 80°	Pressure 210 psi/150kg/cm <sup>2</sup>
---------------	---------------------	------------------------------	--



**Tools:** Roller, Sand Paper (600 Grit) Trowel & Piccolo Tool