

Cnap & Win!
iPad Pro
 Check out our contest!
suzuka.com.my/promotion | T&C Apply



STRATO®

MERINO & ORGANZA

EDITION
2.2

Metallics

INTERIOR
 TEXTURED PAINTS

- Complies to the
- American California Proposition 65 Standard.
 - LEED, U.S. Green Building Council Standard.



WALL FINISH
 PROFESSIONALS.

SINCE
 1977

Free
**Product
 Training**

For All Industry
 Professionals

suzuka.com.my/career-training



WALL FINISH PROFESSIONALS



suzuka.com.my



suzuka.group | Hotline : +6012-258 7388



Photos of the products shown may vary in color due to lighting condition & printing.
 We suggest you examine actual product samples before ordering.



STRATO METALLICS-E2.2-2503

STRATO® *Metallics*

1 STRATO® MERINO

Page 3 – 10

2 STRATO® ORGANZA

Page 11 – 18

SUZUKA® WALL SEALER PRO

“ Make your
wall finishes
last longer! ”



Packing Size: **1L** **5L** **20L**

Superior primer for concrete, skimmed or masonry surfaces.

This sealer that has good substrate penetration abilities to increase adhesion of product to prevent chalking or peeling off.

It has excellent alkaline resistance properties that can prevent efflorescence. It is an ideal base coat for any SUZUKA® or any wall finish products.

Coverage	Drying Time (hour)	
6.5 - 8.5 m ² /l/coat	Surface Dry : 1	Substrate Temperature:
	Hard Dry : 5	23°C - 26°C
	Recoating : 5	

Features:

- Excellent alkaline resistance to prevent efflorescence.
- Good for new walls and repainting.
- Prevents skim coat from chalking & peeling off.
- Extremely good penetration.
- Excellent adhesion.
- Exterior and interior use.
- Applicable with brush, roller or spray gun.

Suitable for:

- Masonry wall
- Brickwork
- Plaster
- Skimmed Coat
- Asbestos free substrate

Airless Spray

Nozzle	Spray Angle Degree	Pressure
1.8 - 2.0 mm	65° - 80°	210 psi/150kg/cm²

STRATO® Merino

SMM



SMM 801 – 814

A striking textured metallic pattern that is linen like.
Strato® Merino not only can suit elegant but also rustic designs.

Appearance

Low Sheen						High Sheen
Smooth Texture						Rough Texture
Matte						Metallic

Features

- Interior use only



Low VOC
& Odor



Green Choice, Water
Based & Eco-friendly



Formaldehyde
& Lead Free



Easy Application
& DIY Friendly



Applicable
on Ceiling



Easy to
Touch Up



Easy
Maintenance



Metallic
Finish

Complies to the
• American California Proposition 65
• LEED, U.S. Green Building Council Standards



SMM-801 Crystal White



SMM-802 Vanilla White



SMM-803 Light Beige



SMM-804 Dewy Rose



SMM-805 Peach Passion



SMM-806 Dusty Mauve



SMM-807 Tippy Taupe



SMM-808 Dapper Tan

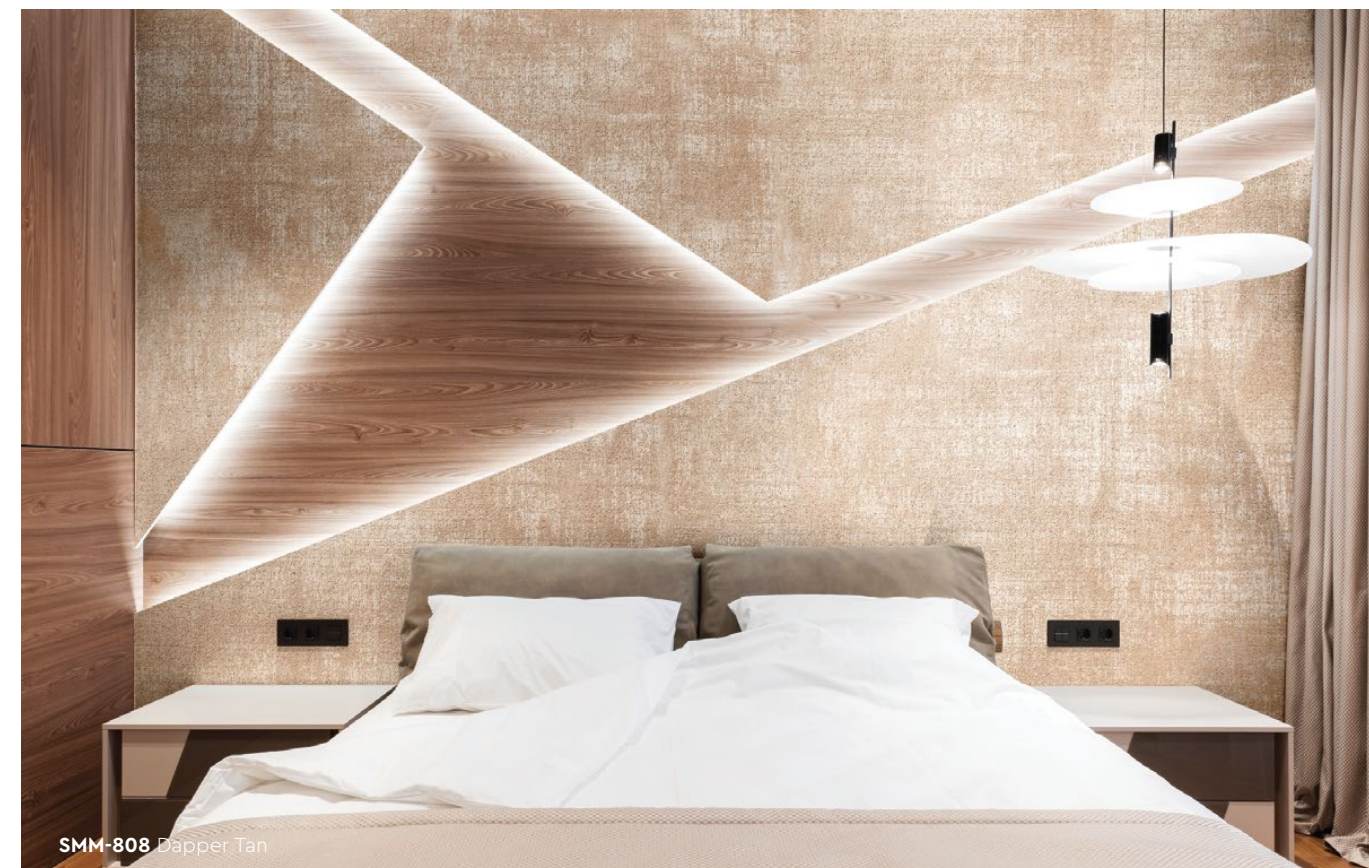


All color shown are as close to the actual Suzuka® Strato® colors as modern printing techniques permit, nonetheless, there are still color/tone differences.

We highly recommend seeing actual samples before ordering.



SMM-811 Frost Grey



SMM-808 Dapper Tan



SMM-811 Frost Grey



SMM-801 Crystal White



SMM-810 Lilac Grey



SMM-805 Peach Passion

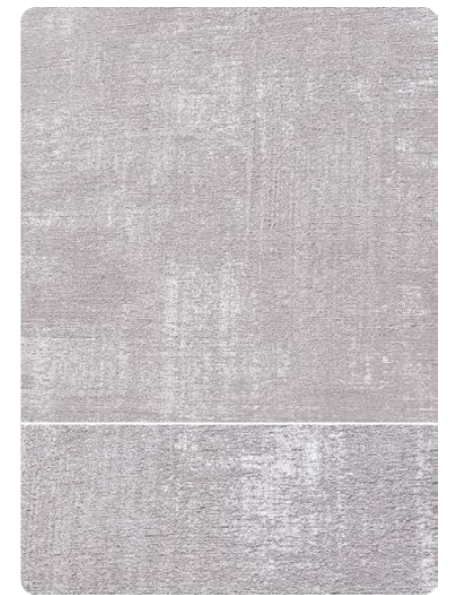


All color shown are as close to the actual Suzuka® Strato® colors as modern printing techniques permit, nonetheless, there are still color/tone differences.

We highly recommend seeing actual samples before ordering.



SMM-809 Lime Grey



SMM-810 Lilac Grey



SMM-811 Frost Grey



SMM-812 Suede Grey



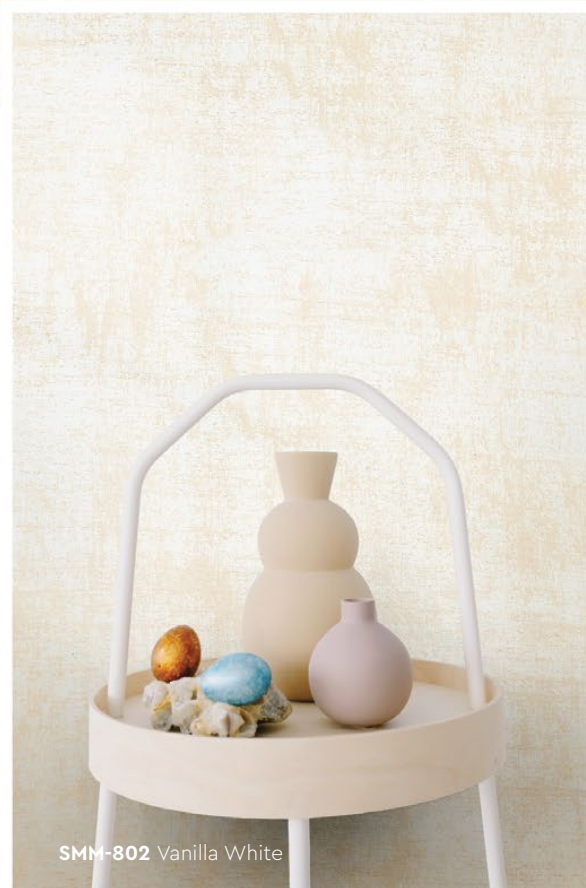
SMM-813 Rocky Grey



SMM-814 Dark Rust



SMM-814 Dark Rust



SMM-802 Vanilla White



SMM-811 Frost Grey

Strato® Merino

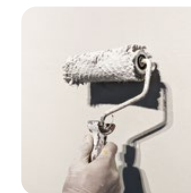
Application Technique

Application Video



Preparation:

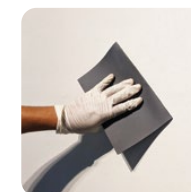
- Cover the edges of surface that won't be painted by masking it with tape, paper or plastic.
- Clean up the wall surface to ensure it is free from dirt and dust.



1 Primer

Roll 2 layers of primer on the entire surface. Allow 30 minutes to dry between the layers.
(The primer can be diluted with maximum 3% of clean water)

Tool: Roller



2 Sanding (Optional)

Sand surface with sandpaper (600 grit) to ensure a smooth surface.

Tool: 600 Grit Sand Paper



3 Texture Coat

Texture Coat (First Layer)

First, brush texture coat horizontally on the surface. Let dry for 30 - 40 minutes.



Texture Coat (Second Layer)

Next, brush texture coat vertically on the surface. Let dry for 30 - 40 minutes.

(Do Not Dilute)

Tool: Brush

IMPORTANT:

Color may vary on application technique & amount of material used.

Dilution Guide:

Primer : Max 3% of clean water.
Texture : Do not dilute.

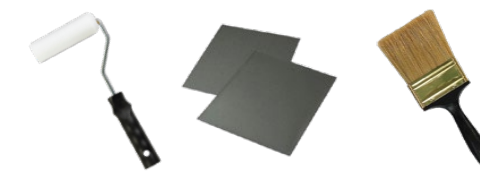


Packing Data

1 L	Primer
1 L	Texture Coat

Coverage (per set)

WALL	3 - 4 sqm
CEILING	2.5 - 3.5 sqm



Tools: Roller, Sand Paper (600 Grit) & Brush



STRATO® Organza



SMO



SMO 701 – 717

A smooth textured pattern with rich and creamy metallic finish that is suitable for all interior designs.

Appearance

Low Sheen						High Sheen
Smooth Texture						Rough Texture
Matte						Metallic

Features

- Interior use only



Low VOC
& Odor



Green Choice, Water
Based & Eco-friendly



Formaldehyde
& Lead Free



Easy Application
& DIY Friendly



Applicable
on Ceiling



Easy to
Touch Up



Easy
Maintenance



Metallic
Finish

Complies to the

- American California Proposition 65
- LEED, U.S. Green Building Council Standards



SMO-701 Floral Beige



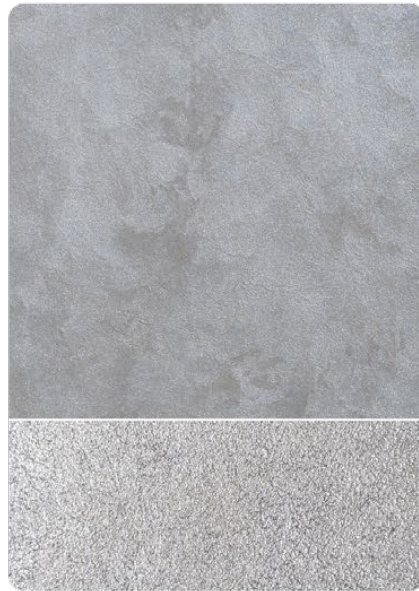
SMO-702 Sandy Beige



SMO-703 Lotus Blossom



SMO-704 Lavender



SMO-705 Space Grey



SMO-706 Pewter Grey



SMO-707 Blue Ash



SMO-708 Antique Blue



All color shown are as close to the actual Suzuka® Strato® colors as modern printing techniques permit, nonetheless, there are still color/tone differences.

We highly recommend seeing actual samples before ordering.

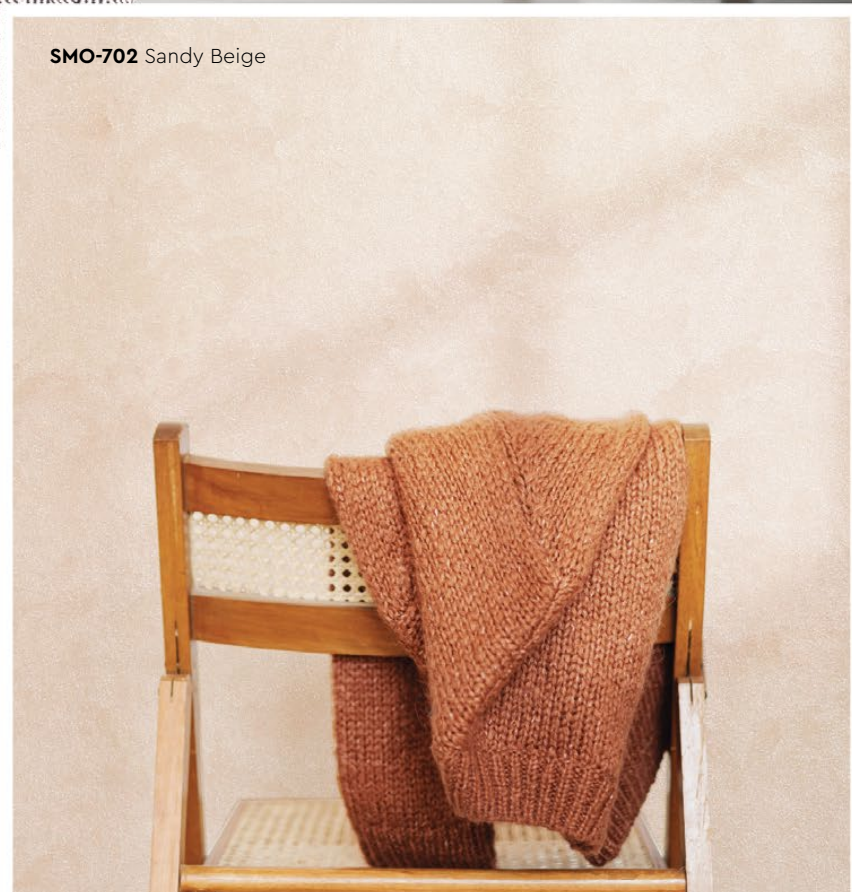


SMO-703 Lotus Blossom





SMO-702 Sandy Beige



SMO-705 Space Grey

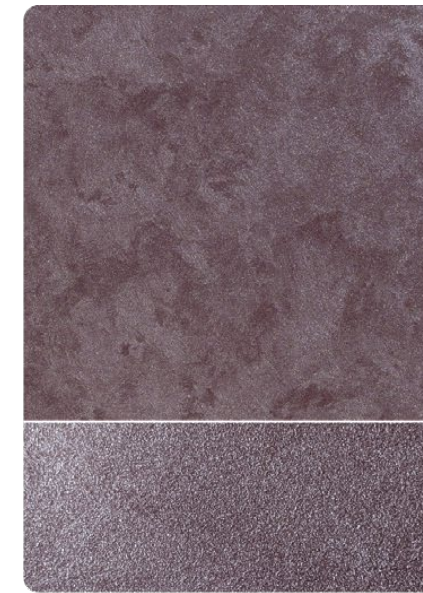


All color shown are as close to the actual Suzuka® Strato® colors as modern printing techniques permit, nonetheless, there are still color/tone differences.

We highly recommend seeing actual samples before ordering.



SMO-709 Lava Grey



SMO-710 Plum Violet



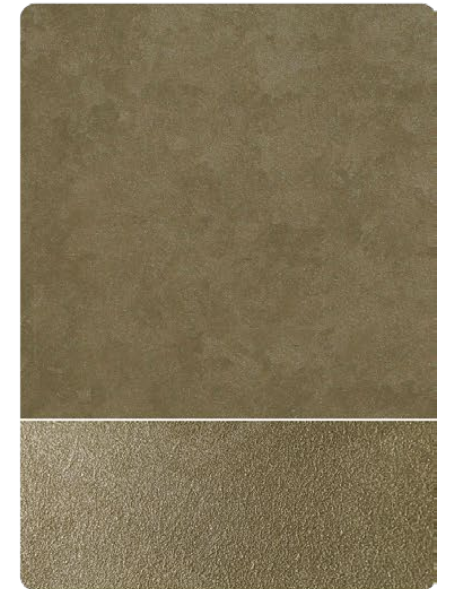
SMO-711 Dark Amber



SMO-712 Antique Wood



SMO-713 Pale Mustard



SMO-714 Olive Garden



SMO-715 Seal Grey



SMO-716 Fossil Grey



SMO-717 Sage Green



SMO-715 Seal Grey



SMO-713 Pale Mustard

SMO-714 Olive Garden

Strato® Organza

Application Technique

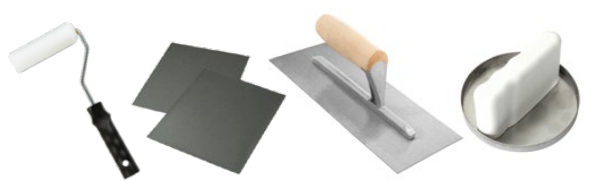
Application Video



- Preparation:
- Cover the edges of surface that won't be painted by masking it with tape, paper or plastic.
 - Clean up the wall surface to ensure it is free from dirt and dust.

IMPORTANT:
Color may vary on application technique & amount of material used.

Dilution Guide:
Primer : Max 3% of clean water.
Texture : Do not dilute.



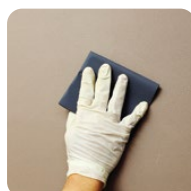
Tools: Roller, Sand Paper (600 Grit) Trowel & Piccolo Tool



1 Primer

Roll 2 layers of primer on the entire surface. Allow 30 minutes to dry between the layers.
(The primer can be diluted with maximum 3% of clean water)

Tool: Roller



2 Sanding

Sand surface with sandpaper (600 grit) to ensure a smooth surface.

Tool: 600 Grit Sand Paper

Texture Coat Options



3A Texture Coat Piccolo Pattern

Texture Coat (First Layer)

(1) scrape texture coat evenly on the surface.
(2) Use piccolo tool to create texture effects by moving with random motion. Let dry for 30 to 40 minutes.

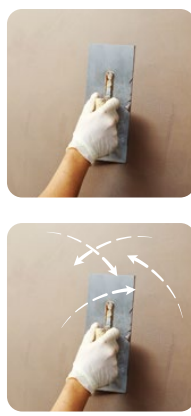
Texture Coat (Second Layer)

Repeat the steps for a second layer of texture coat. Let dry for 30 to 40 minutes.
(Do Not Dilute)

Tool: Trowel & Piccolo Tool



Piccolo Pattern



3B Texture Coat Trowel Pattern

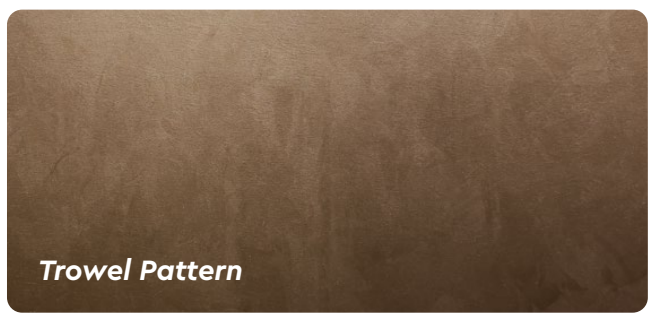
Texture Coat (First Layer)

Scrape texture coat evenly on the surface. Let dry for 30 to 40 minutes.

Texture Coat (Second Layer)

Scrape texture coat randomly on the surface to create texture. Let dry for 30 to 40 minutes.
(Do Not Dilute)

Tool: Trowel



Trowel Pattern



Packing Data

1 L	Primer
1 L	Texture Coat

* Piccolo tool is sold separately

Coverage (per set)

WALL	6 - 7 sqm
CEILING	5 - 6 sqm