



FLAT BRICK

Code	Boxes /pallet	Coverage (sqm/box)	Pieces /box	RM /sqm	RM /box
AR-3001 ~ 3004	144	0.96 ~ 0.98	60	234.40	<b>225</b>
BL-6101 ~ 6108	120	0.74 ~ 0.76	46	178.40	<b>132</b>
BQ-001 ~ 006	48	0.77 ~ 0.80	8	253.25	<b>195</b>
DS-101 ~ 106	32	1.00 ~ 1.04	110	177.00	<b>177</b>
DS-501 ~ 506	32	1.12 ~ 1.16	60	177.70	<b>199</b>
DS-901 ~ 906	40	1.17 ~ 1.20	96	169.23	<b>198</b>
EG-101 ~ 102	40	0.67 ~ 0.72	18	250.75	<b>168</b>
EG-201 ~ 202	24	0.85 ~ 0.90	80	243.50	<b>207</b>
EG-301 ~ 302	24	0.82 ~ 0.86	36	264.60	<b>217</b>
EG-401 ~ 403	36	0.71 ~ 0.74	30	271.80	<b>193</b>
BK-1101 ~ 1106	48	1.29 ~ 1.33	104	162.80	<b>210</b>
BK-1101 ~ 1106 (Without Grouting)	48	1.10 ~ 1.11	104	190.90	<b>210</b>
BK-1201 ~ 1206	48	1.27 ~ 1.35	104	165.35	<b>210</b>
BK-1201 ~ 1206 (Without Grouting)	48	1.09 ~ 1.12	104	192.65	<b>210</b>
BK-1301 ~ 1306	48	1.22 ~ 1.25	104	172.10	<b>210</b>
BK-1301 ~ 1306 (Without Grouting)	48	1.04 ~ 1.68	104	201.90	<b>210</b>
BK-3101 ~ 3111	64	0.72 ~ 0.73	48	183.30	<b>132</b>
BK-4101 ~ 4106	48	0.80 ~ 0.83	30	208.75	<b>167</b>
BK-7101 ~ 7108	48	0.78 ~ 0.80	55	211.50	<b>165</b>

CORNER BRICK

Code	Boxes /pallet	Coverage (m/box)	Pieces /box	RM /m	RM /box
-	-	-	-	-	-
-	-	-	-	-	-
-	-	-	-	-	-
DS-101C ~ 106C	32	2.74 ~ 2.80	56	76.25	<b>209</b>
DS-501C ~ 506C	32	3.20 ~ 3.26	32	70.00	<b>224</b>
DS-901C ~ 906C	40	2.07 ~ 2.19	30	86.95	<b>180</b>
-	-	-	-	-	-
-	-	-	-	-	-
-	-	-	-	-	-
-	-	-	-	-	-
-	-	-	-	-	-
-	-	-	-	-	-
-	-	-	-	-	-
-	-	-	-	-	-
-	-	-	-	-	-
BK-3101C ~ 3111C	64	1.52 ~ 1.58	21	72.35	<b>110</b>
BK-4101C ~ 4106C	48	1.46 ~ 1.55	16	88.40	<b>129</b>
-	-	-	-	-	-

FLAT STONE

Code	Boxes /pallet	Coverage (sqm/box)	Pieces /box	RM /sqm	RM /box
KST-1001 ~ 1004A	48	0.71 ~ 0.72	6	280.30	<b>199</b>
PS-2001 ~ 2005	24	0.87 ~ 0.91	12	287.40	<b>250</b>
PS-2006	24	0.87 ~ 0.91	12	313.80	<b>273</b>
DS-001 ~ 004	32	0.64 ~ 0.71	14	273.45	<b>175</b>
DS-011 ~ 018	32	0.55 ~ 0.60	12	281.80	<b>155</b>
DS-021	24	0.58 ~ 0.60	17 ~ 21	279.30	<b>162</b>
DS-024	20	0.54 ~ 0.58	20 ~ 24	340.75	<b>184</b>
DS-031 ~ 034	32	0.63 ~ 0.67	19 ~ 23	257.15	<b>162</b>
DS-041 ~ 047	24	0.65 ~ 0.69	17 ~ 21	252.30	<b>164</b>
DS-053	32	0.68 ~ 0.72	14 ~ 18	252.95	<b>172</b>
DS-062	20	0.59 ~ 0.62	21 ~ 24	342.40	<b>202</b>
DS-071 ~ 075	24	0.55 ~ 0.59	12 ~ 14	265.65	<b>145</b>
DS-081	24	0.58 ~ 0.61	20 ~ 24	282.80	<b>164</b>
DS-091 ~ 094	24	0.55 ~ 0.58	10 ~ 15	318.20	<b>175</b>
DS-111 ~ 119	32	0.98 ~ 1.00	20	232.70	<b>228</b>
DS-171 ~ 172	24	0.55 ~ 0.59	24 ~ 27	261.80	<b>144</b>
DS-191 ~ 192	30	0.34 ~ 0.39	3	517.65	<b>176</b>
DS-201	32	0.58 ~ 0.60	6 ~ 9	325.90	<b>189</b>
DS-301 ~ 306	24	0.67 ~ 0.72	16	271.65	<b>182</b>
DS-401 ~ 403	32	0.64 ~ 0.71	14	332.80	<b>213</b>
DS-601 ~ 609	48	0.57 ~ 0.60	12	243.90	<b>139</b>
DS-701 ~ 703	24	0.95 ~ 1.02	12	262.10	<b>249</b>
DS-801 ~ 809	24	0.98 ~ 1.00	35	271.45	<b>266</b>

CORNER STONE

Code	Boxes /pallet	Coverage (m/box)	Pieces /box	RM /m	RM /box
-	-	-	-	-	-
-	-	-	-	-	-
-	-	-	-	-	-
DS-001C ~ 004C	32	1.55 ~ 1.62	16	101.30	<b>157</b>
DS-011C ~ 018C	32	1.55 ~ 1.62	16	101.95	<b>158</b>
DS-021C	20	1.55 ~ 1.62	16 ~ 18	116.95	<b>180</b>
DS-024C	20	1.46 ~ 1.55	16 ~ 18	146.60	<b>214</b>
DS-031C	32	1.50 ~ 1.55	8	96.00	<b>144</b>
DS-041C ~ 045C	24	1.80 ~ 1.86	8	92.80	<b>167</b>
-	-	-	-	-	-
DS-062C	20	1.55 ~ 1.62	12 ~ 16	132.30	<b>205</b>
DS-071C ~ 073C	20	1.80 ~ 1.86	7 ~ 8	93.35	<b>168</b>
DS-081C	20	1.50 ~ 1.55	15	114.70	<b>172</b>
DS-091C ~ 094C	20	1.55 ~ 1.62	12	108.40	<b>168</b>
-	-	-	-	-	-
-	-	-	-	-	-
-	-	-	-	-	-
DS-301C ~ 306C	24	1.86 ~ 1.92	16	95.20	<b>177</b>
DS-401C ~ 403C	32	1.55 ~ 1.62	16	123.25	<b>191</b>
-	-	-	-	-	-
DS-701C ~ 703C	24	2.53 ~ 2.65	14	103.95	<b>263</b>
DS-801C ~ 809C	24	2.29 ~ 2.38	40	106.15	<b>243</b>

\* The packing coverage and length for BK-11, BK-12, BK-13, BK-31, BK-41, AR-30, BQ-00, DS-90, BL-61 and BK-71 series are inclusive of groove line application.

\* Please allow a +/- 5% tolerance for color and packing of the artificial stone. We suggest examining actual product samples before ordering.

Model Code	Coverage (sqm)	RM/sqm	RM/box
WS-1001 (Big)	Size: 19cm x 19cm 0.45 sqm / box (12 pcs)	357.80	<b>161</b>
WS-2001 (Small)	Size: 9.5cm x 19cm 0.43 sqm / box (24 pcs)	469.80	<b>202</b>
WS-3001 ~ WS-3005	Size: 12cm x 60cm 0.98 ~ 0.99 sqm / box (14 pcs)	221.45	<b>217</b>

\* The packing coverage and length for DS-02, DS-06, DS-07, DS-08 and DS-09 series are inclusive of groove line application.

\* Please allow a +/- 5% tolerance for color and packing of the artificial stone. We suggest examining actual product samples before ordering.



# TROWEL STONE

PEBBLE STONE COATING

## TROWEL WALL (TW)

Product	Coverage (sqm)	Packing	RM/sqm	RM/set
TW-S-XXX	5.11 ~ 5.67	25 kg / Set	RM 64.60	RM <b>330</b>
TW-A-XXX	3.99 ~ 4.46	25 kg / Set	RM 82.70	RM <b>330</b>
TW-B-XXX	2.97 ~ 3.34	25 kg / Set	RM 111.15	RM <b>330</b>
TW-C-XXX	2.04 ~ 2.32	25 kg / Set	RM 161.80	RM <b>330</b>
TW-Binder (Resin only)	For 20kg Pebbles	6.5 kg		RM <b>262</b>
TW-Primer - 4L	16.72 ~ 20.44	4 Ltr / Drum		RM <b>159</b>
TW-Primer - 18L	74.32 ~ 92.90	18 Ltr / Drum		RM <b>646</b>

\* Old codes (TR - S,A,B,C -XXX) are still in use simultaneously until further notice.

## TROWEL FLOOR (TF)

Product	Coverage (sqm)	Packing	RM/sqm	RM/set
TF-A-XXX	2.69 ~ 3.07	14 kg / Set	RM 122.70	RM <b>330</b>
TF-B-XXX	2.51 ~ 2.88	17 kg / Set	RM 131.50	RM <b>330</b>
TF-C-XXX	2.23 ~ 2.51	21 kg / Set	RM 148.00	RM <b>330</b>
TF-D-XXX	1.67 ~ 1.95	21 kg / Set	RM 197.60	RM <b>330</b>
TF-Binder + Primer	For 19kg Pebbles (#3,#5)	1 Set		RM <b>269</b>
TF-Primer	2.79 ~ 3.72	500 g / Drum		RM <b>113</b>

\* Old codes (TF - 001~ 012) are still in use simultaneously until further notice.

\*\* All Premium Trowel Floor set includes PRIMER.

\*\*\* TF Binder MUST be used with TF Primer to achieve optimal result.

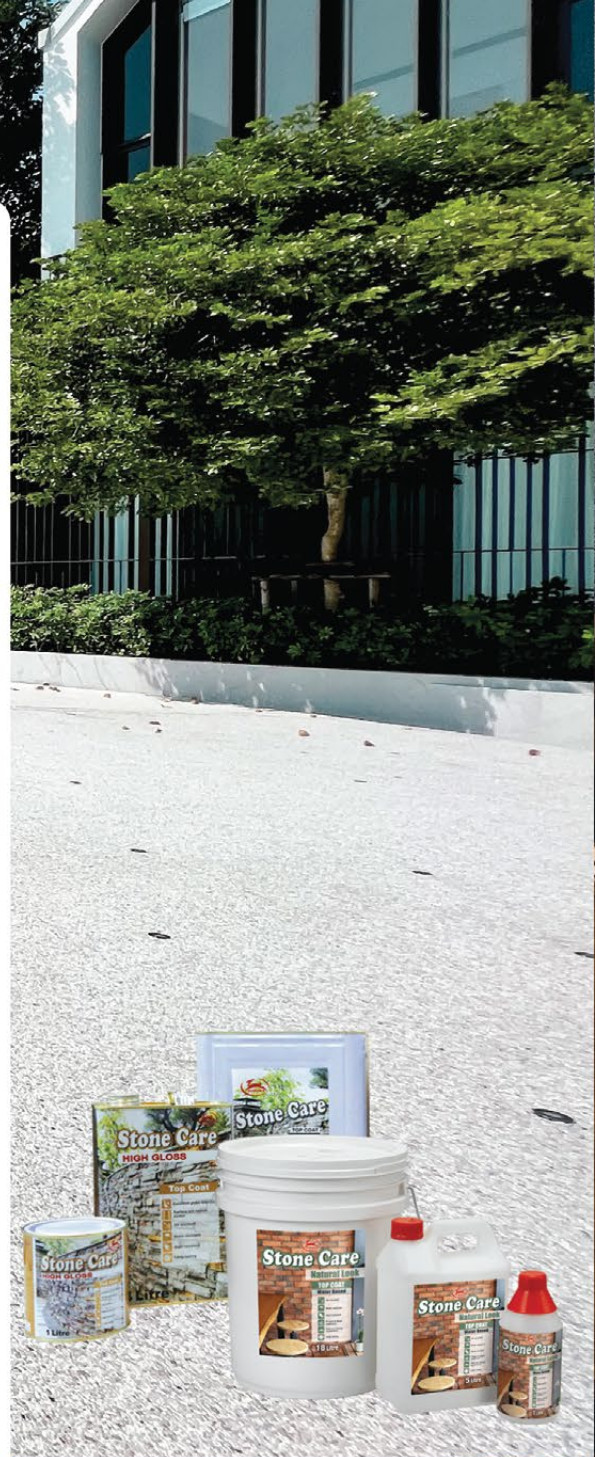
## STONECARE

Product	Coverage (sqf)	Packing	RM/Tin
Glossy - 1L	70 ~ 100 sqf / Ltr	12 Tins / Ctn	RM <b>49</b>
Glossy - 4L	70 ~ 100 sqf / Ltr	6 Tins / Ctn	RM <b>159</b>
Glossy - 18L	70 ~ 100 sqf / Ltr	Loose	RM <b>549</b>
Natural - 1L	80 ~ 110 sqf / Ltr	12 Tins / Ctn	RM <b>52</b>
Natural - 5L	80 ~ 110 sqf / Ltr	6 Tins / Ctn	RM <b>196</b>
Natural - 18L	80 ~ 110 sqf / Ltr	Loose	RM <b>561</b>

\* 1Ltr Stonecare packaging is now 12 tins per carton.

## KASTBOND

Product	Packing	Coverage (m <sup>2</sup> /set)	RM/sqm	RM/Set
james'BOND <sup>b2</sup>	2+4 kg / SET (including 350ml SEALER)	2 ~ 3 m <sup>2</sup>	RM 34.00	RM <b>68</b>
	10+20 kg / SET (including 1L SEALER)	10 ~ 12 m <sup>2</sup>	RM 20.50	RM <b>205</b>
eziBOND <sup>i5</sup>	5 kg / SET (including 350ml SEALER)	2.2 ~ 2.5 m <sup>2</sup>	RM 55.90	RM <b>123</b>
	20 kg / SET (including 1L SEALER)	9 ~ 10 m <sup>2</sup>	RM 42.45	RM <b>382</b>
topBOND <sup>t7</sup>	5 kg / SET (including 350ml SEALER)	2.2 ~ 2.5 m <sup>2</sup>	RM 74.55	RM <b>164</b>
	20 kg / SET (including 1L SEALER)	9 ~ 10 m <sup>2</sup>	RM 60.80	RM <b>547</b>
SEALER	1 Litre	10 ~ 12 m <sup>2</sup>	RM 2.50	RM <b>25</b>



# ARCHISTRA

## WALL PANEL SERIES

ARCHISTRA								
Series	Packing (Box)	Coverage (Box)	Model: 01 - 06 (SP / ECES)			Model: 51 - 53 (SGC)		
			RM/sqm	RM/piece	RM/Box	RM/sqm	RM/piece	RM/Box
ACH-11	6 pcs	4.32 sqm	RM 223.60	RM 161	RM <b>966</b>	RM 279.90	RM 201.50	RM <b>1209</b>
	1 pc	0.72 sqm	RM 288.90	RM 208	RM <b>208</b>	RM 330.60	RM 238.00	RM <b>238</b>
ACH-10	4 pcs	2.88 sqm	RM 231.95	RM 167	RM <b>668</b>	RM 288.20	RM 207.50	RM <b>830</b>
	1 pc	0.72 sqm	RM 295.85	RM 213	RM <b>213</b>	RM 341.70	RM 246.00	RM <b>246</b>
ACH-20	3 pcs	2.16 sqm	RM 273.60	RM 197	RM <b>591</b>	RM 331.00	RM 238.30	RM <b>715</b>
	1 pc	0.72 sqm	RM 338.90	RM 244	RM <b>244</b>	RM 381.95	RM 275.00	RM <b>275</b>
ACH-40	4 pcs	2.88 sqm	RM 223.60	RM 161	RM <b>644</b>	RM 279.90	RM 201.50	RM <b>806</b>
	1 pc	0.72 sqm	RM 288.90	RM 208	RM <b>208</b>	RM 330.60	RM 238.00	RM <b>238</b>
ACH-50	4 pcs	2.88 sqm	RM 284.75	RM 205	RM <b>820</b>			
	1 pc	0.72 sqm	RM 333.35	RM 240	RM <b>240</b>			
ACH-60	4 pcs	3.54 sqm	RM 253.10	RM 224	RM <b>896</b>			
	1 pc	0.88 sqm	RM 298.90	RM 263	RM <b>263</b>			

## KASTONE® GROUTING

Weight	Packing/box	RM/Box	RM/Pack
3.5 kg/pack	4 packs	RM 68.00	RM <b>17.00</b>
1 kg/pack	14 packs	RM 84.00	RM <b>6.00</b>

## KASTONE® EASY

Weight	RM/unit
290 ml / 490g	RM <b>19.00</b>



**SUZUKA**  
WALL FINISH PROFESSIONALS

RETAIL PRICE LIST  
**EAST MALAYSIA**  
**2504-01**



Ideal for SUZUKA®  
Brick Veneer & Wall Panel Series.



[suzuka.com.my](http://suzuka.com.my)

[f](https://www.facebook.com/suzuka.group) [i](https://www.instagram.com/suzuka.group) [d](https://www.youtube.com/suzuka.group) [suzuka.group](https://www.linkedin.com/suzuka.group) | Hotline : +6012-258 7388

Photos of the products shown may vary in color due to lighting condition & printing. We suggest you examine actual product samples before ordering.



PRICE LIST-EM-2504-01/KS



# STRATO®

INTERIOR TEXTURED PAINTS



Product	Set	Packing	Coverage/set	RM/sqm	RM/set
<b>VEROSA</b> SVR 101 - 118	1 L	1L Natural Primer (Optional)	7 - 9 m <sup>2</sup>	RM 7.86	RM 55
	4 L	4L Natural Primer (Optional)	28 - 36 m <sup>2</sup>	RM 7.03	RM 197
	1 L	1L Texture Coat	6 - 8 m <sup>2</sup>	RM 17.67	RM 106
	4 L	4L Texture Coat	24 - 32 m <sup>2</sup>	RM 14.25	RM 342
<b>CEMENT TEXTURE</b> SCT 301 - 311	2.5 L	1L Primer / 1L Texture Coat / 0.5L Topcoat	6 - 7 m <sup>2</sup>	RM 39.83	RM 239
	10 L	4L Primer / 4L Texture Coat / 2L Topcoat	24 - 28 m <sup>2</sup>	RM 35.71	RM 857
<b>VELOURS</b> SVL 401 - 426	2.5 L	1L Primer / 1L Texture Coat / 0.5L Topcoat	6 - 7 m <sup>2</sup>	RM 39.83	RM 239
	10 L	4L Primer / 4L Texture Coat / 2L Topcoat	24 - 28 m <sup>2</sup>	RM 35.71	RM 857
<b>TAFFETA</b> SRT 201 - 233	2.5 L	1L Primer / 1L Texture Coat / 0.5L Topcoat / Plastic Spatula	4.5 m <sup>2</sup>	RM 53.11	RM 239
	10 L	4L Primer / 4L Texture Coat / 2L Topcoat / Plastic Spatula	18 m <sup>2</sup>	RM 47.61	RM 857
<b>CASHMERE</b> SCH 001 - 021	3 L	1L Primer / 1L Texture Coat / 1L Topcoat	6 - 7 m <sup>2</sup>	RM 39.83	RM 239
	12 L	4L Primer / 4L Texture Coat / 4L Topcoat	24 - 28 m <sup>2</sup>	RM 35.71	RM 857
<b>ORGANZA</b> SMO 701 - 717	2 L	1L Primer / 1L Texture Coat	6 - 7 m <sup>2</sup>	RM 39.83	RM 239
	8 L	4L Primer / 4L Texture Coat	24 - 28 m <sup>2</sup>	RM 35.71	RM 857
<b>MERINO</b> SMM 801 - 814	2 L	1L Primer / 1L Texture Coat	3 - 4 m <sup>2</sup>	RM 79.67	RM 239
	8 L	4L Primer / 4L Texture Coat	12 - 16 m <sup>2</sup>	RM 71.47	RM 857
<b>SATIN</b> STS 501 - 509	2 L	1L Primer / 1L Texture Coat	6 - 7 m <sup>2</sup>	RM 40.67	RM 244
	8 L	4L Primer / 4L Texture Coat	24 - 28 m <sup>2</sup>	RM 36.58	RM 878
<b>LINNEN</b> STL 901 - 913	3 L	1L Primer / 2L Texture Coat	9 - 10 m <sup>2</sup>	RM 26.56	RM 239
	12 L	4L Primer / 8L Texture Coat	36 - 40 m <sup>2</sup>	RM 23.81	RM 857



Piccolo Tool RM 19



Linnen Texture Roller RM 56

## MONOKRETE

Set	Packing	Coverage	RM/sqm	RM/Set
<b>MCT 2.8 L</b>	1L Primer	6 - 7 m <sup>2</sup> / set	RM 46.67	RM 280
	1L Texture Coat 0.8L Topcoat			
<b>MCT 11.2 L</b>	4L Primer 4L Texture Coat 3.2L Topcoat	24 - 28 m <sup>2</sup> / set	RM 41.25	RM 990

## KRETERRA

Product	Packing	Coverage	RM/Unit
Moisture Barrier (EP-MB)	Part A: 3.5 kg	2 kg/m <sup>2</sup> (1mm)	RM 149.00
Self Smoothing Epoxy	24 kg Part B: 1.5 kg		RM 81.80
Cementitious Moisture Barrier	Part C: 19 kg		RM 58.73
KRT Primer	1L	7 - 9 m <sup>2</sup> /l	RM 97.88
KRT Texture Coat	1L	5 - 6 m <sup>2</sup> /l	RM 111.86
Topcoat Gloss (WPU-G)	4.0 kg	Part A: 3.0 kg	RM 534.84
		Part B: 1.0 kg	RM 188.76
Topcoat Matte (WPU-M)	5.5 kg	Part A: 4.5 kg	RM 534.84
		Part B: 1.0 kg	RM 188.76

## TEXTURE COATING

Product	MGM   Magic Granite	NSC   Stony Coat	TC   Ceramic Coat
Packing	Texture (25kgs) EM-Primer (1L) FSI Clear Top Coat (1L)	Texture (25kgs) EM-Primer (1L) FSI Clear Top Coat (1L)	Texture (25kgs) EM-Primer (1L) FSI Clear Top Coat (1L)
Coverage	5 - 6 m <sup>2</sup>	5 - 6 m <sup>2</sup>	7 - 8 m <sup>2</sup>
Price/set	RM 375	RM 348	RM 348

Product /unit	Packing	Coverage (sqm)	RM/sqm	RM/Unit
MGM Magic Granite	25 kg	5 ~ 6	RM 66.40	RM 332
NSC Stony Coat	25 kg	5 ~ 6	RM 60.40	RM 302
TC Ceramic Coat	25 kg	7 ~ 8	RM 43.14	RM 302
Primer (EMP)	1L	7 ~ 9	RM 5.57	RM 39
	18L	126 ~ 162	RM 2.64	RM 333
Topcoat (FSI)	1L	8 ~ 10	RM 8.25	RM 66
	15L	120 ~ 150	RM 5.76	RM 691

### Spray Gun



RM 594/unit

## GRANILYTE (SGC)

Product /unit	Packing	Coverage (sqm)	RM/sqm	RM/Unit
Primer	4L	16	RM 10.06	RM 161
	18L	72	RM 7.78	RM 560
Texture Coat	5L	5.4	RM 39.44	RM 213
	18L	19	RM 32.42	RM 616
Topcoat	1L	9	RM 7.56	RM 68
	5L	45	RM 7.33	RM 330
	15L	135	RM 5.12	RM 691
Price / Set	Primer 4L   Texture Coat 10L   Topcoat 1L			RM 629
	Coverage 10 m <sup>2</sup>			

### SUZUKA Multicolor Spray Gun



RM 1,232/unit

# MODENA COATING

Product	Primer (EMP)	Modena Coat		Topcoat (FSI)
Packing	1L	10 kg	25 kg	1L
Coverage	7 ~ 9 m <sup>2</sup> /l	2.5 ~ 7.0 m <sup>2</sup> *	6.25 ~ 17.5 m <sup>2</sup> *	8 ~ 10 m <sup>2</sup> /l/coat
Price/Unit	RM 41	RM 140	RM 272	RM 69

\*The coverage of texture coat may vary depending on type of pattern chosen. Please refer Modena Coating catalogue for the coverage specifications.

Code	Pattern	10 KG (RM 140/drum)		25 KG (RM 272/drum)	
		Coverage (m <sup>2</sup> /10kgs)	RM/sqm	Coverage (m <sup>2</sup> /25kgs)	RM/sqm
MAR-##-R	Random Strands	4.0 - 5.0	RM 28.00	10.0 - 12.5	RM 21.76
MAH-##-R	Horizontal Strands	4.0 - 5.0	RM 28.00	10.0 - 12.5	RM 21.76
MAV-##-R	Vertical Strands	4.0 - 5.0	RM 28.00	10.0 - 12.5	RM 21.76
MO-##-S	Suede Surface	5.0 - 7.0	RM 20.00	12.5 - 17.5	RM 15.54
MR-##-R	Rough Desert	2.9 - 3.3	RM 42.42	7.25 - 8.25	RM 32.97
MV-##-R	Moon Surface	2.5 - 3.0	RM 46.67	6.25 - 7.5	RM 36.27
MAA-##-F	Refined Strands	4.0 - 5.0	RM 28.00	10.0 - 12.5	RM 21.76
MD-##-S	Sand Stone	3.3 - 4.0	RM 35.00	8.25 - 10.0	RM 27.20
ME-##-S	Hairlines	5.0 - 7.0	RM 20.00	12.5 - 17.5	RM 15.54
MS-##-S	Sketchy Brush	5.0 - 7.0	RM 20.00	12.5 - 17.5	RM 15.54
MSA-##-S	Canyon Brush	3.3 - 4.0	RM 35.00	8.25 - 10.0	RM 27.20
MSB-##-S	Hashed Brush	3.3 - 4.0	RM 35.00	8.25 - 10.0	RM 27.20
MEA-##-S	Stream Lines	3.3 - 4.0	RM 35.00	8.25 - 10.0	RM 27.20
MOA-##-S	Pitted Surface	2.9 - 3.3	RM 42.42	7.25 - 8.25	RM 32.97
MP-##-R	Linear Rough	2.5 - 3.0	RM 46.67	6.25 - 7.5	RM 36.27
MC-##-R	Bumpy Spray	2.9 - 3.3	RM 42.42	7.25 - 8.25	RM 32.97
MG-##-R	Stucco Press	2.9 - 3.3	RM 42.42	7.25 - 8.25	RM 32.97
MU-##-S	Rocky Stripes	3.3 - 4.0	RM 35.00	8.25 - 10.0	RM 27.20
MW-##-F	Fine Spray	5.0 - 7.0	RM 20.00	12.5 - 17.5	RM 15.54
MF-##-S	Pointed Comb	4.0 - 5.0	RM 28.00	10.0 - 12.5	RM 21.76
MK-##-S	Crepe Comb	2.9 - 3.3	RM 42.42	7.25 - 8.25	RM 32.97
MQ-##-S	Bar Comb	2.9 - 3.3	RM 42.42	7.25 - 8.25	RM 32.97
MX-##-S	Scrape Comb	1.6 - 2.0	RM 70.00	4.0 - 5.0	RM 54.40



# WALL SEALER PRO

Packing	Coverage	RM/sqm	RM/Unit
1L	6.5 ~ 8.5 m <sup>2</sup> /l/coat	RM 6.92	RM 45.00
5L	6.5 ~ 8.5 m <sup>2</sup> /l/coat	RM 4.52	RM 147.00
20L	6.5 ~ 8.5 m <sup>2</sup> /l/coat	RM 2.95	RM 383.00



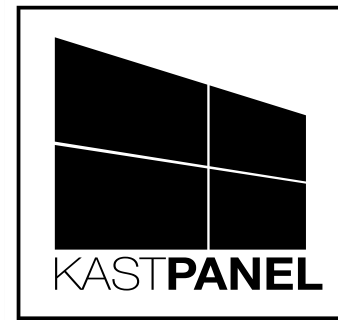
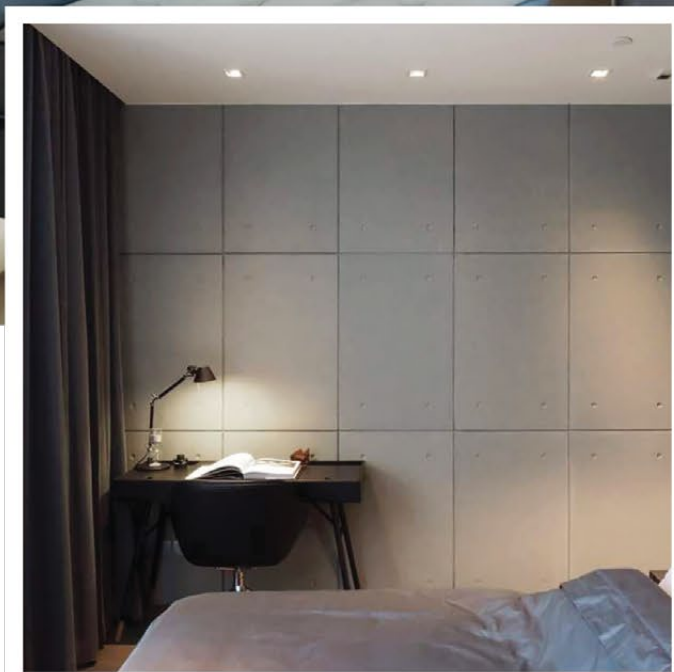
[suzuka.com.my](http://suzuka.com.my)

Hotline : +6012-258 7388

Photos of the products shown may vary in color due to lighting condition & printing. We suggest you examine actual product samples before ordering.

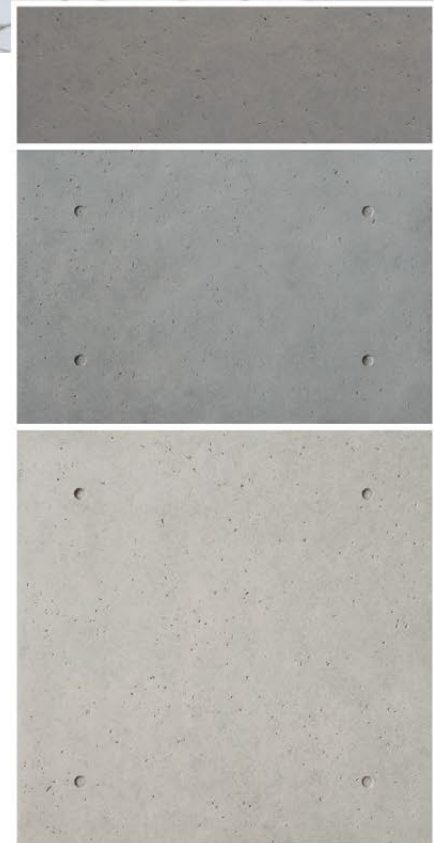


PRICE LIST-EM-2504-01/ST



# KASTPANEL

Product	Packing/box	Coverage/box	RM/sqm	RM/Piece	RM/Box
KPC-003	10 pcs	2.79 sqm	RM 230.85	RM 64.40	RM 644
	2 pcs	0.56 sqm	RM 282.15	RM 79.00	RM 158
KPC-006	6 pcs	3.34 sqm	RM 231.15	RM 128.67	RM 772
	1 pc	0.56 sqm	RM 282.15	RM 158.00	RM 158
KPC-009	4 pcs	3.34 sqm	RM 243.70	RM 203.50	RM 814
	1 pc	0.84 sqm	RM 295.25	RM 248.00	RM 248



**SUZUKA**  
WALL FINISH PROFESSIONALS

RETAIL PRICE LIST  
**EAST MALAYSIA**  
**2504-01**