

Cnap & Win!
iPad Pro

Check out our contest!
suzuka.com.my/promotion | T&C Apply



ARCHISTRA

EDITION
2.2

WALL PANEL SERIES

- Complies to LEED, U.S. Green Building Council Standards.
- Fire Retardant: Fire Rating B1, DIN Standards.

WALL FINISH PROFESSIONALS.

SINCE 1977

Free
Product Training

For All Industry Professionals

suzuka.com.my/career-training

WALL FINISH PROFESSIONALS



suzuka.com.my

suzuka.group | Hotline : +6012-258 7388



Photos of the products shown may vary in color due to lighting condition & printing.
We suggest you examine actual product samples before ordering.



ARCHISTRA-E2.2-2412

ARCHISTRA

Redefine your walls with the Archistra wall panel collection.

Transform your space with our exquisite Archistra wall panel collection. Crafted using polyurethane, with precision and artistic flair, these panels redefine design, seamlessly blending artistry & architecture.

Choose from a diverse range of patterns, textures, and colors to suit your aesthetic preferences. Whether you seek a contemporary focal point or a timeless elegance, Archistra offers a versatile solution.

Ultra lightweight, hassle free installation and maintenance, these panels effortlessly adds a touch of sophistication and personality to your living spaces.



Features



Ultra Lightweight



Water Resistant



Finished with Green Coating



Paintable



Anti-mould



Anti-termite



Fire Retardant: Fire Rating B1, DIN Standards.



Easy Installation & DIY Friendly



Can Be Paired with other Suzuka Coatings.



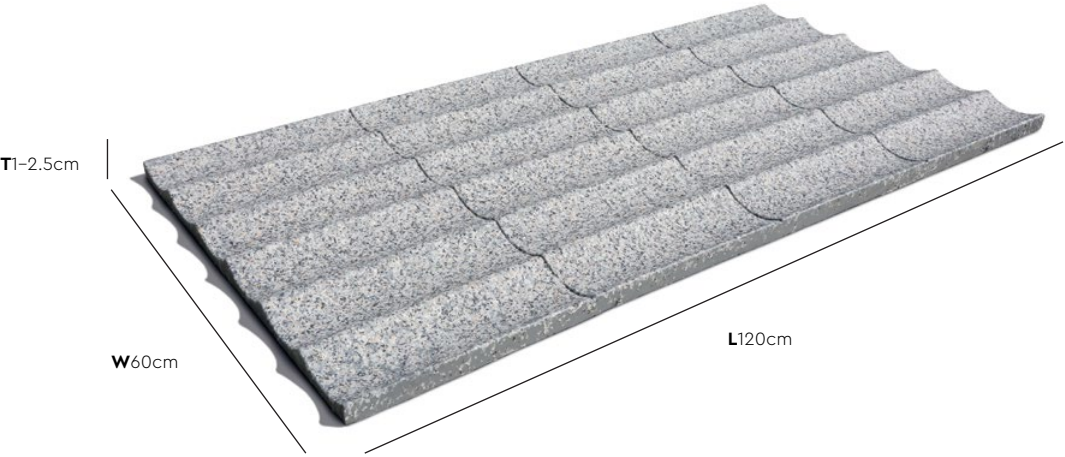
Made in Malaysia



Complies to **LEED**, U.S. Green Building Council Standards.

ACH-11

series



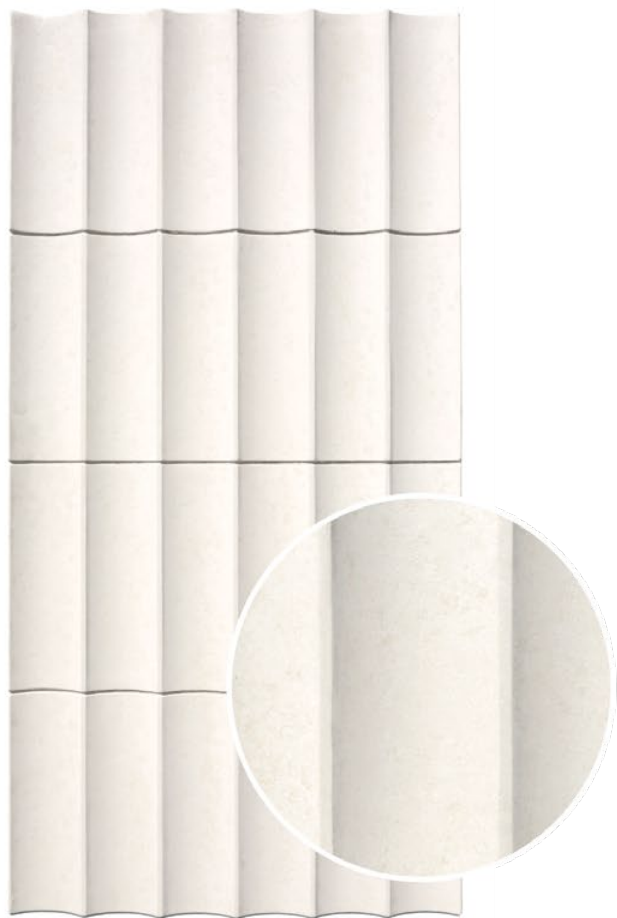
Coverage (Per box) | Pieces (Per box)
4.32 sqm | **6 pcs**

Max. Weight (ACH-1101 – 1105)
1.4 kg (Per Piece) | **10.0 kg** (Per box)

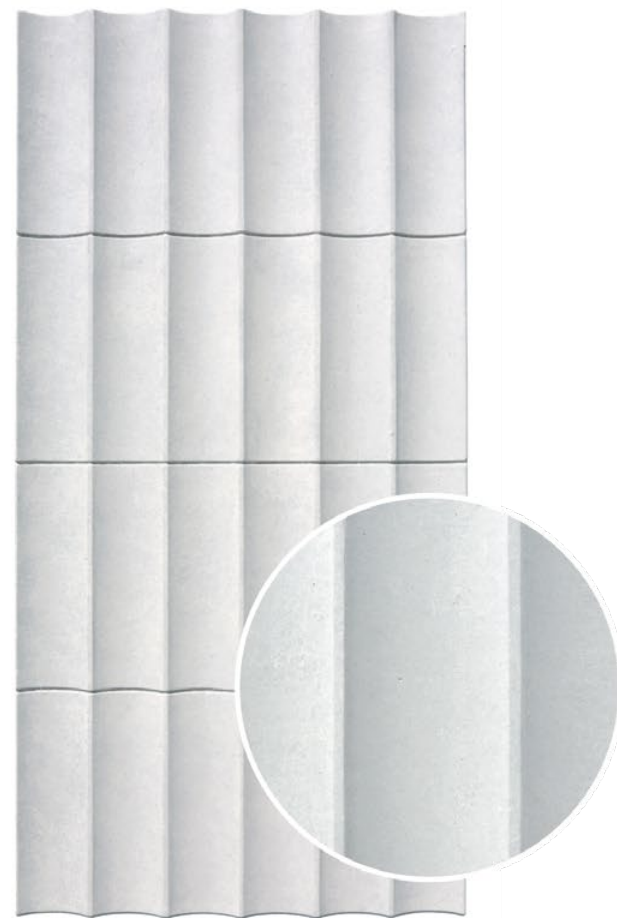
Max. Weight (ACH-1151–1153)
2.2 kg (Per Piece) | **15.0 kg** (Per box)

* Please allow a \pm 5% tolerance for product size, weight and colour.

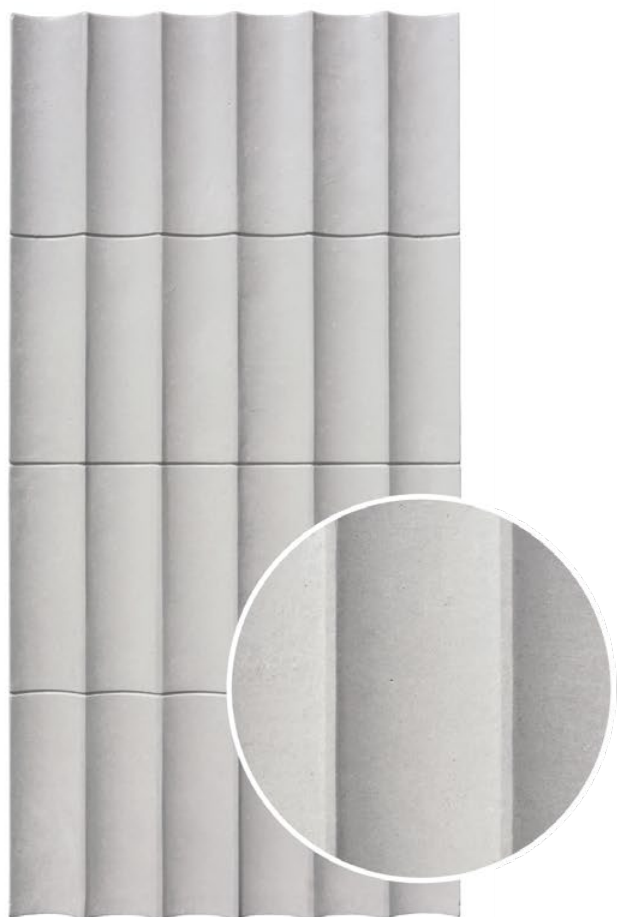




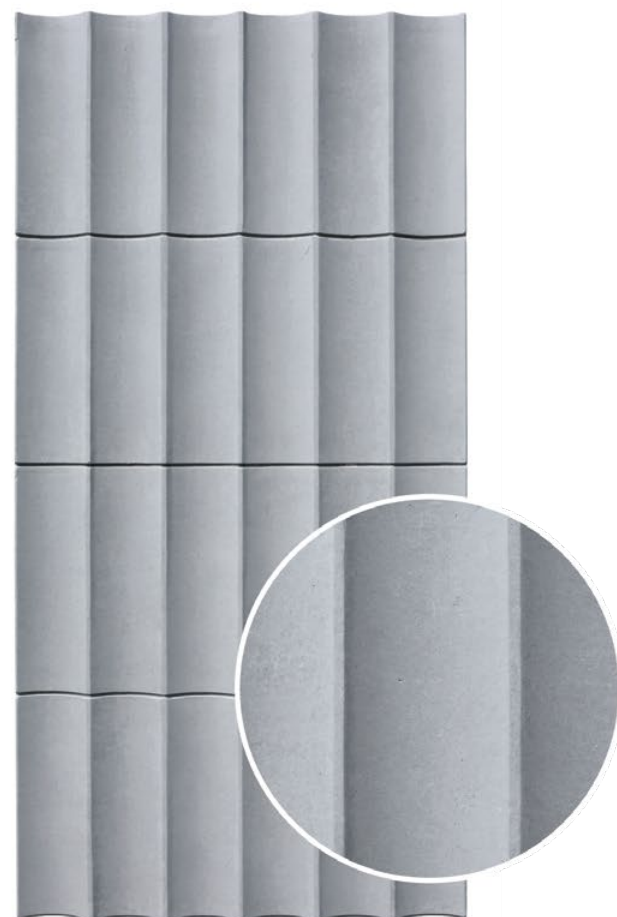
ACH-1101



ACH-1102



ACH-1103



ACH-1104



ACH-1101

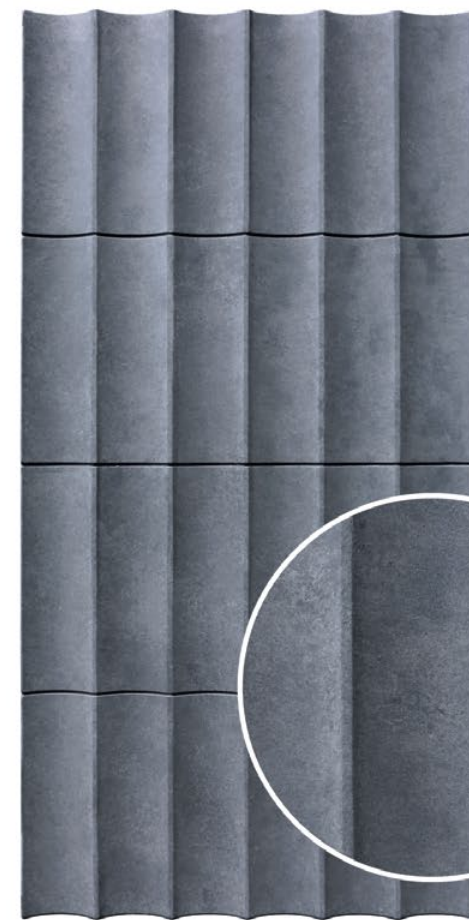


ACH-1104



ACH-1103





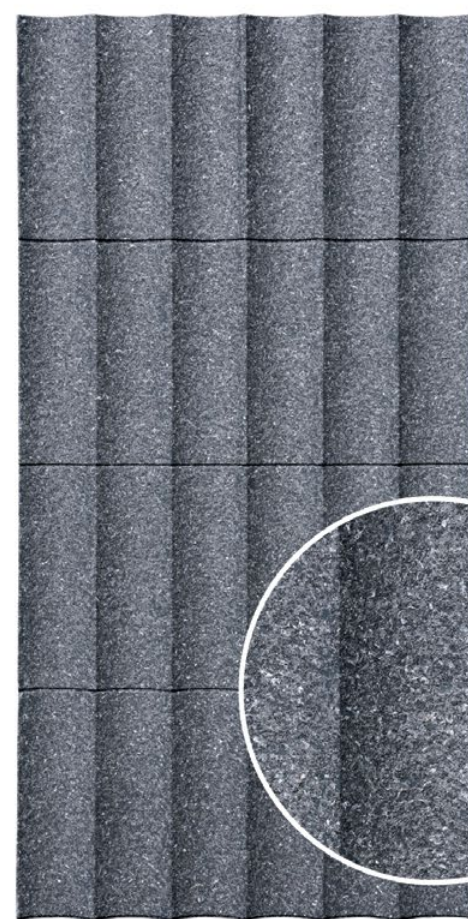
ACH-1105



ACH-1151



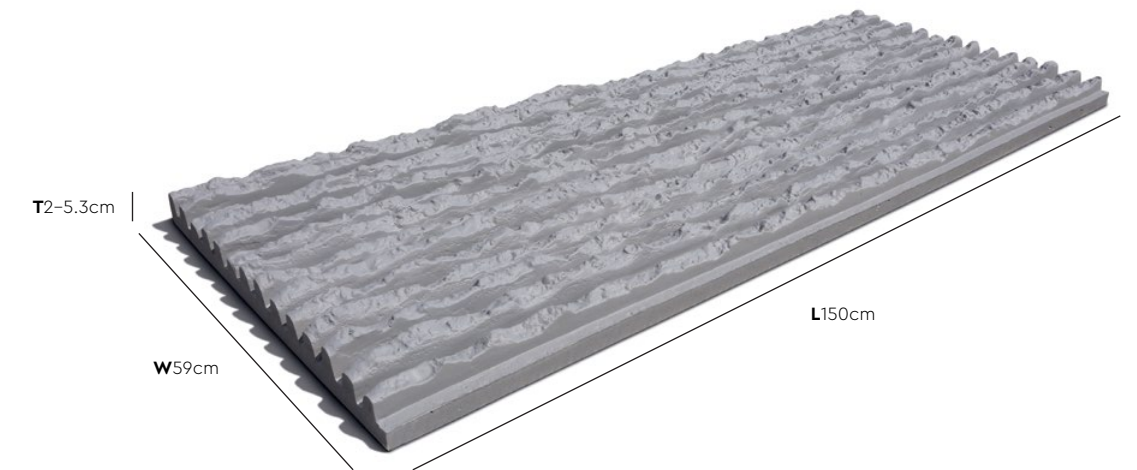
ACH-1152



ACH-1153

ACH-60

series



Coverage (Per box) | Pieces (Per box)
3.54 sqm | **4 pcs**

Max. Weight
3.1 kg (Per Piece) | **15 kg** (Per box)

* Please allow a \pm 5% tolerance for product size, weight and colour.

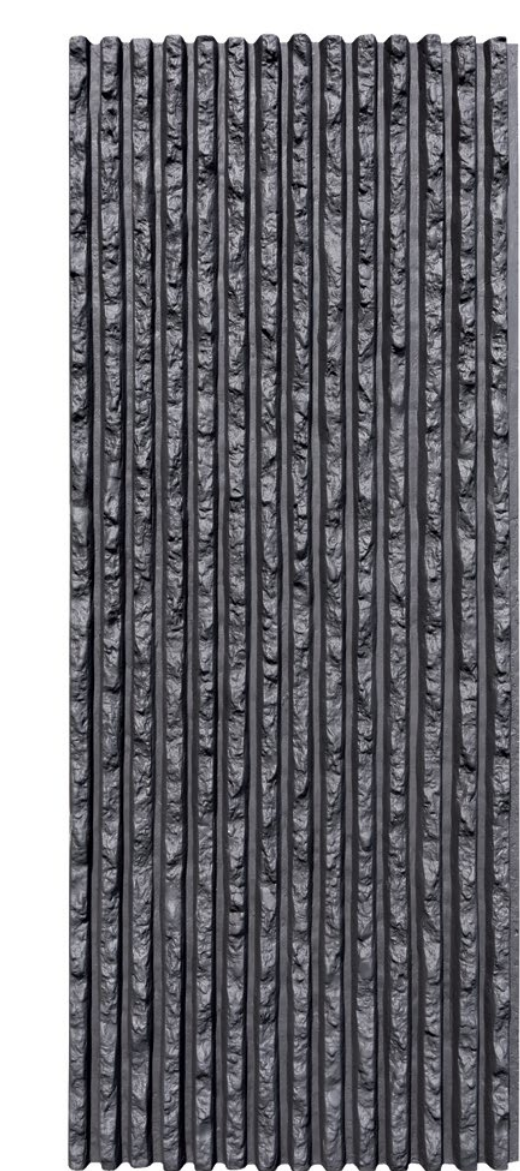




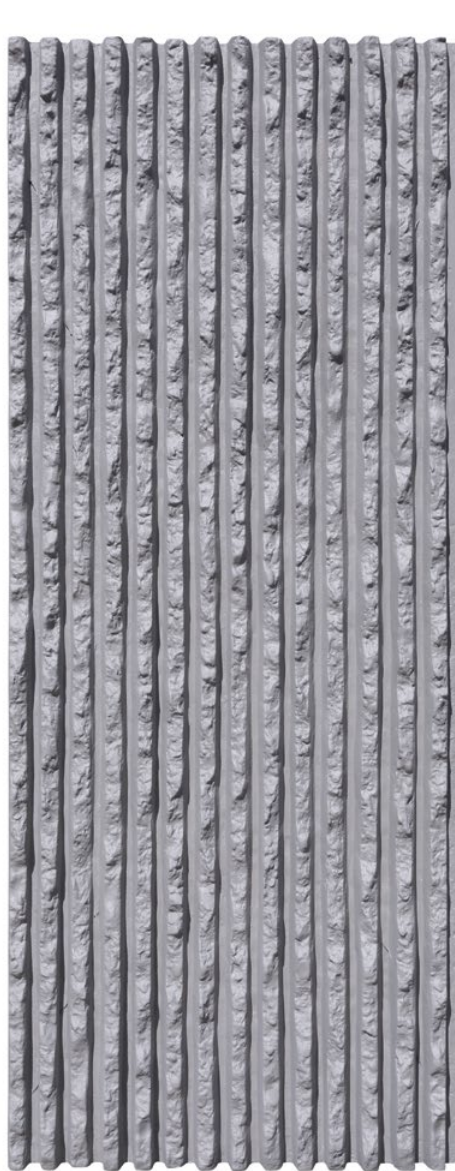
ACH-6003



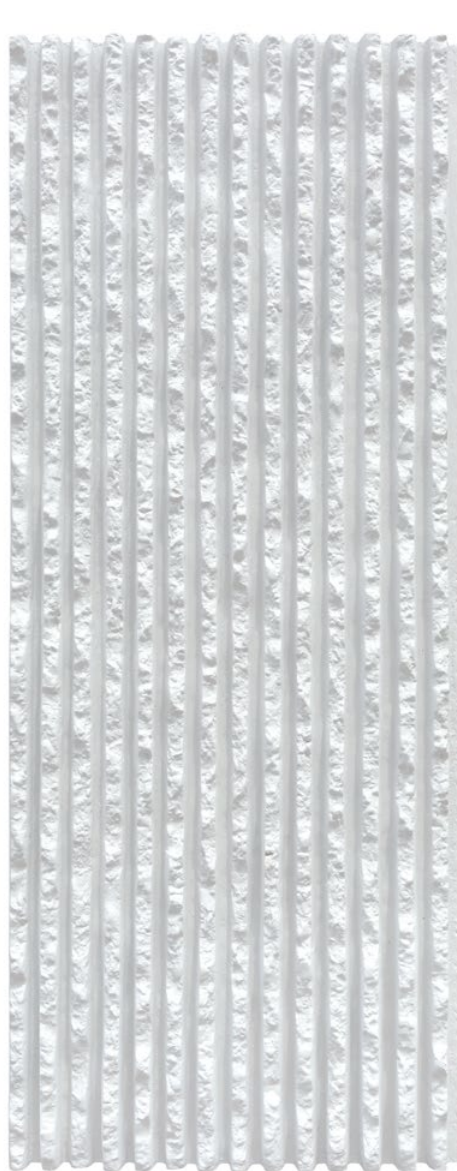
ACH-6006



ACH-6001



ACH-6002



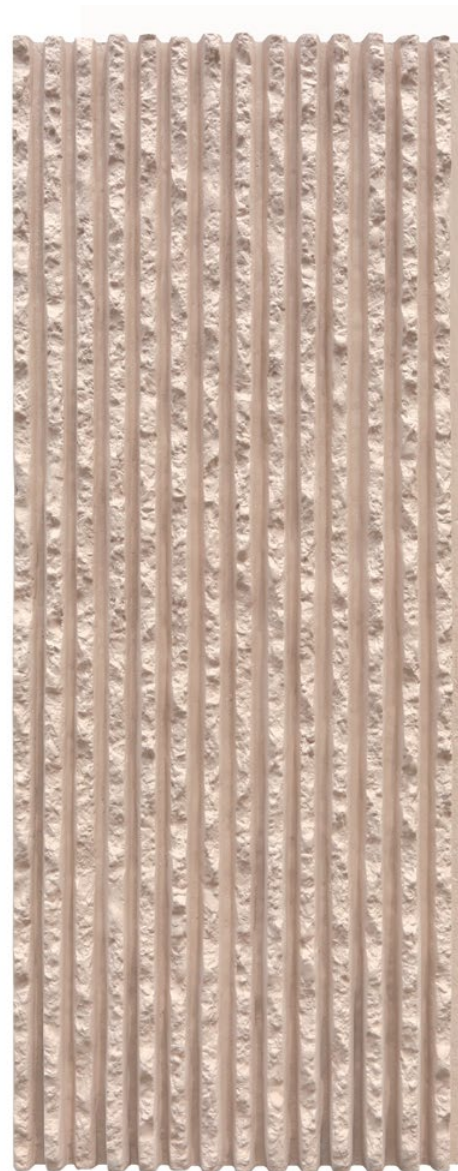
ACH-6003



ACH-6004



ACH-6005



ACH-6006



ACH-50

series

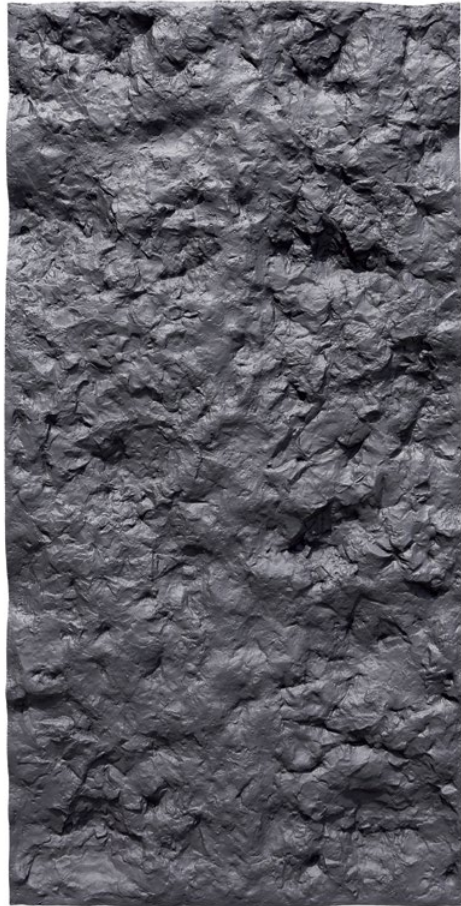


Coverage (Per box) | Pieces (Per box)
2.88 sqm | **4 pcs**

Max. Weight
2.4 kg (Per Piece) | **11 kg** (Per box)

* Please allow a \pm 5% tolerance for product size, weight and colour.





ACH-5001



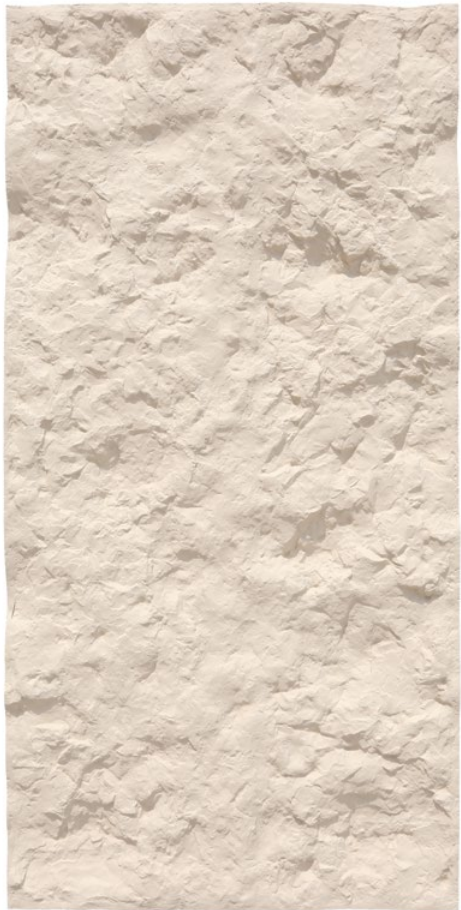
ACH-5002



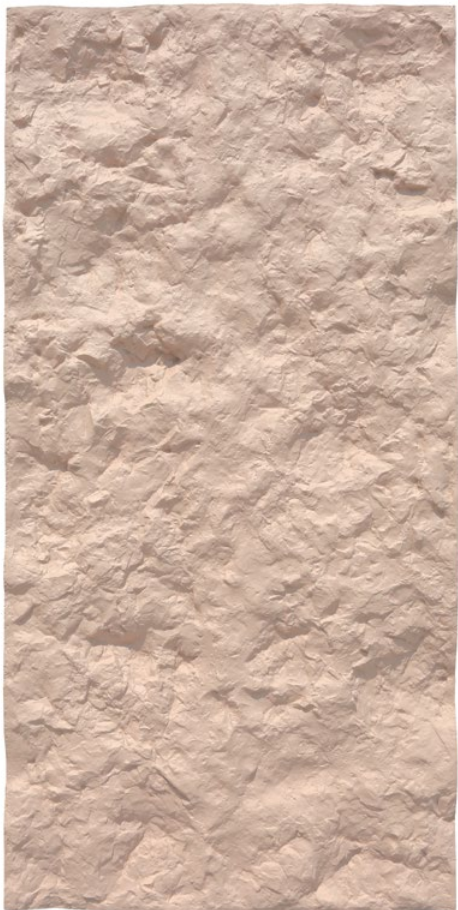
ACH-5003



ACH-5004



ACH-5005



ACH-5006



ACH-5003



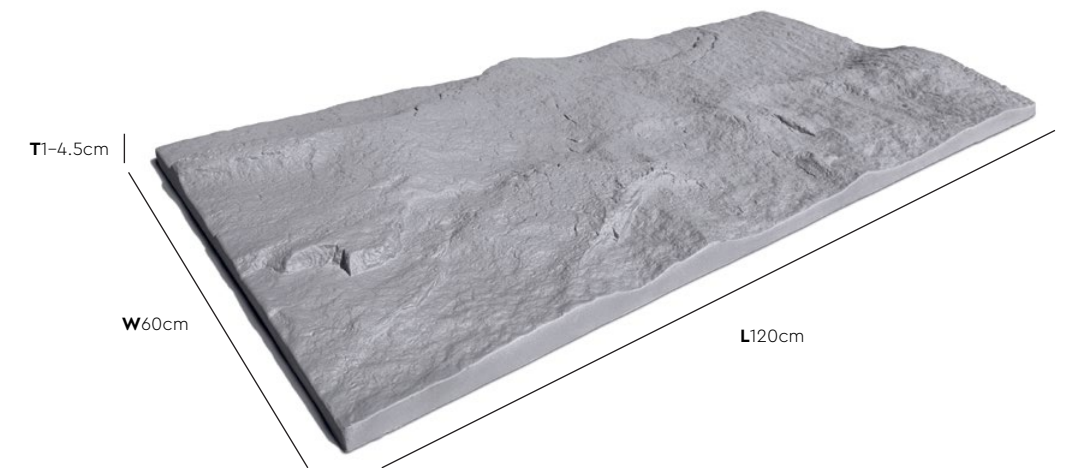
ACH-5006



ACH-1004 | Stacks

ACH-10

series



ACH-1005 | Stacks

Coverage (Per box)	Pieces (Per box)
2.88 sqm	4 pcs

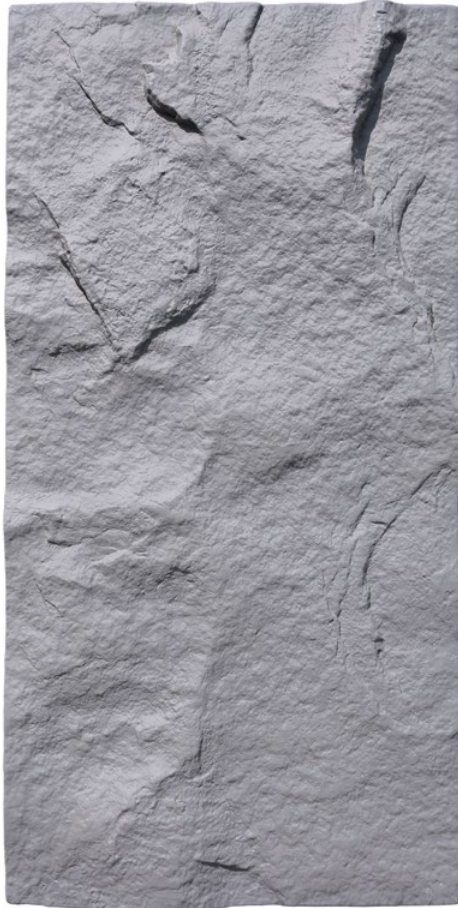
Max. Weight (ACH-1001 – 1006)
2.2 kg (Per Piece) 11.5 kg (Per box)

Max. Weight (ACH-1051)
3.3 kg (Per Piece) 13.3 kg (Per box)

* Please allow a \pm 5% tolerance for product size, weight and colour.



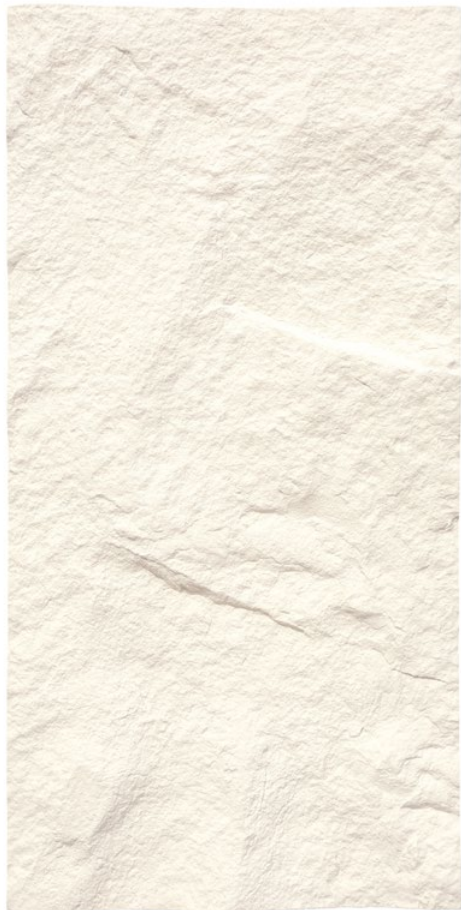
ACH-1001



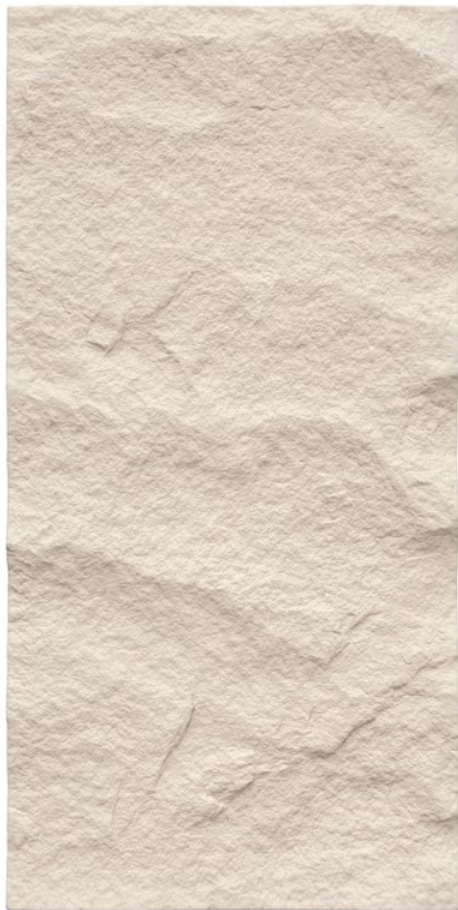
ACH-1002



ACH-1003



ACH-1004



ACH-1005



ACH-1006

ACH-1003 | Running Bond



ACH-1002 | Random



ACH-1005 | Running Bond



ACH-1051



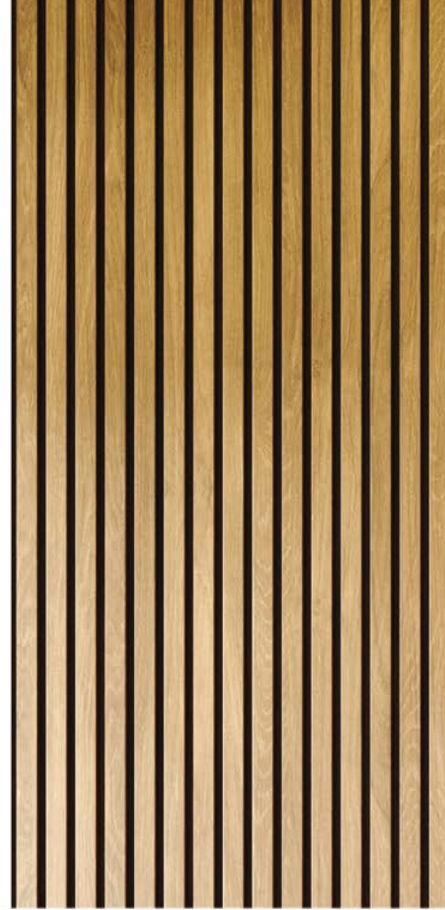
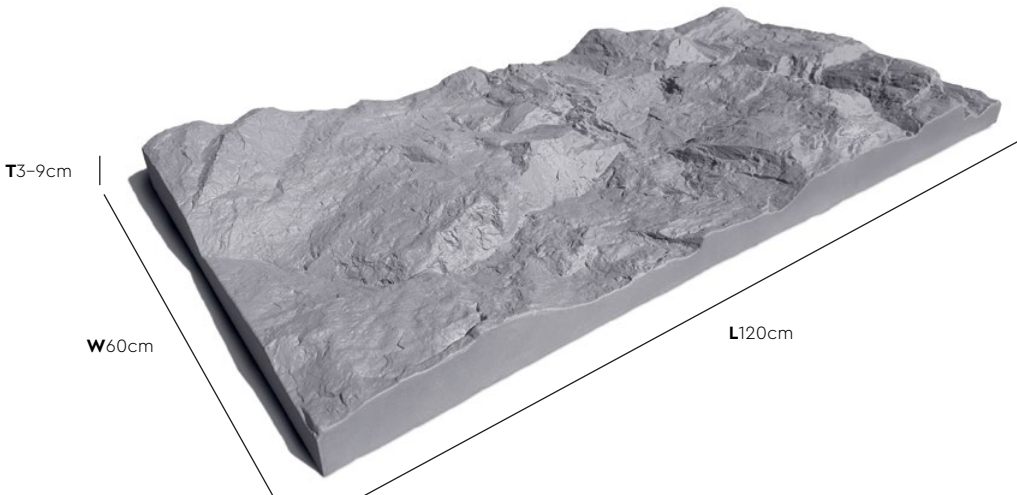
ACH-1004 | Stacks



ACH-1001 | Running Bond

ACH-20

series



Coverage (Per box) | Pieces (Per box)
2.16 sqm | **3 pcs**

Max. Weight (ACH-2001 – 2006)
2.8 kg (Per Piece) | **11.5 kg** (Per box)

Max. Weight (ACH-2051)
3.9 kg (Per Piece) | **11.8 kg** (Per box)

* Please allow a ± 5% tolerance for product size, weight and colour.



Combination of **ACH-1004 & ACH-2004** | Running Bond



ACH-2001



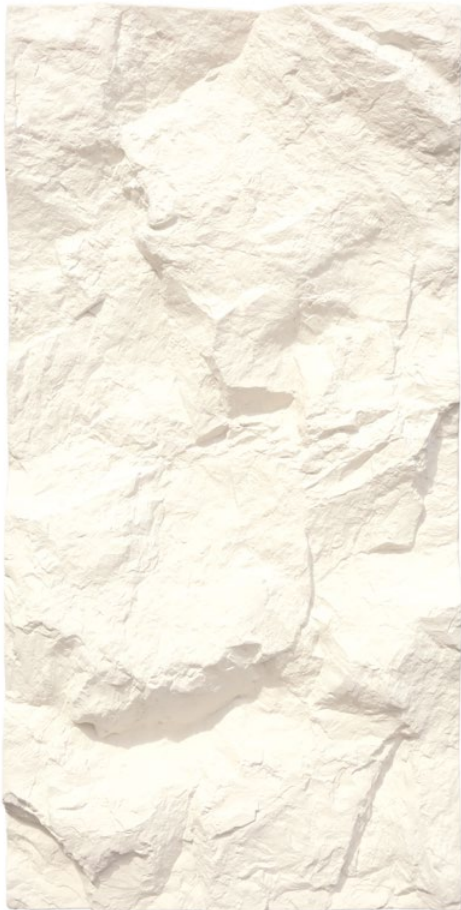
ACH-2002



ACH-2003



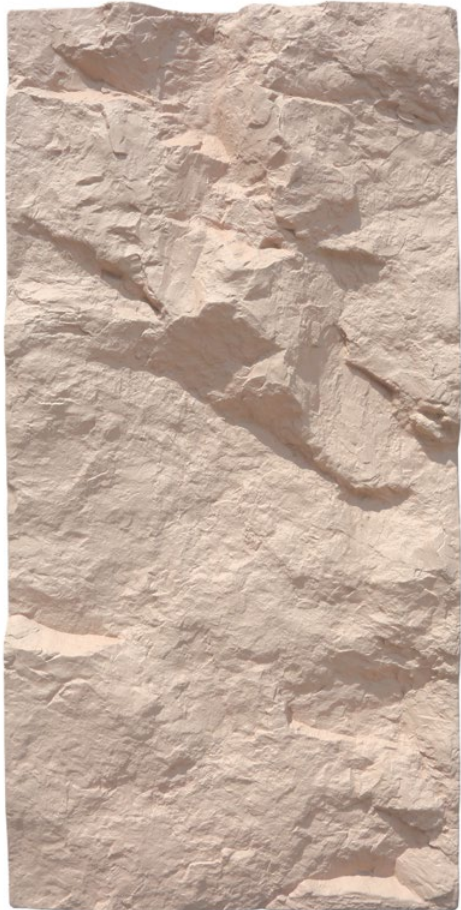
ACH-2005 | Running Bond



ACH-2004



ACH-2005



ACH-2006



ACH-2001 | Random



ACH-2051



Combination of ACH-1002 & ACH-2002 | Random



ACH-2003 | Random



ACH-4002 | Running Bond

ACH-40

series



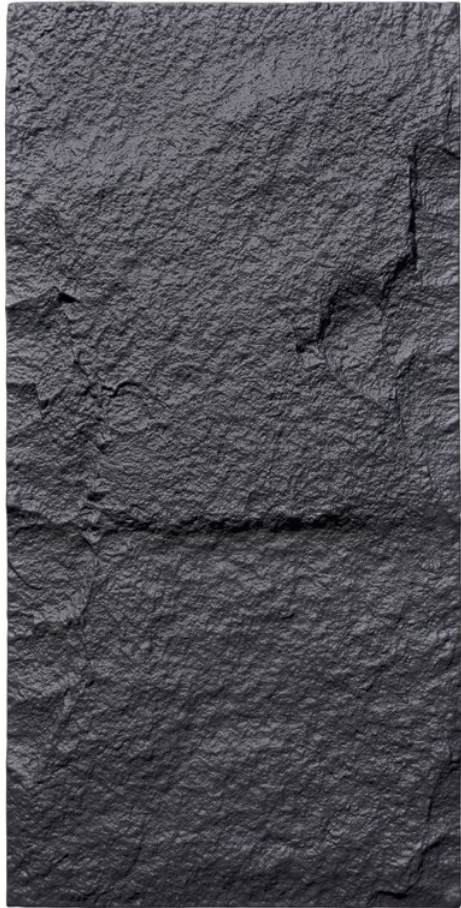
Combination of ACH-2005 & ACH-4005 | Running Bond

Coverage (Per box) | Pieces (Per box)
2.88 sqm | **4 pcs**

Max. Weight (ACH-4001 - 4006)
2.0 kg (Per Piece) | **11.5 kg** (Per box)

Max. Weight (ACH-4051)
3.1 kg (Per Piece) | **13.0 kg** (Per box)

* Please allow a \pm 5% tolerance for product size, weight and colour.



ACH-4001



ACH-4002



ACH-4003



ACH-4004



ACH-4005



ACH-4006



ACH-4005 | Random



ACH-4003 | Stacks



Combination of ACH-1001 & ACH-4001 | Random



ACH-4051



ACH-4006 | Random



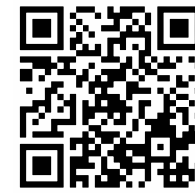
Running Bond



Stacks



Random



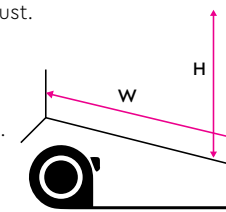
Installation Instructions

Step 1 – Surface Preparation

- A** Clean up the surface from dirt or dust.

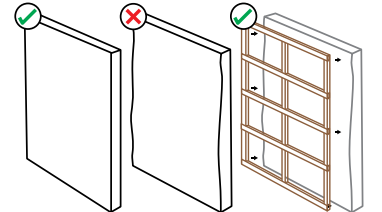
If the scheme coat of the wall is weak, chalking or peeling, we recommend to use the **Wall Sealer Pro** (Page 26).

- B** Measure the dimensions of wall.



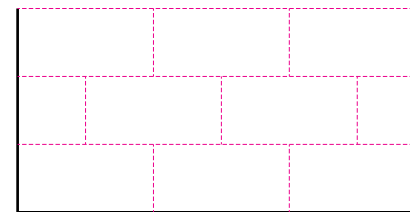
- C** Ensure your wall surface is non-wavy, dry, and solid.

If your surface is too wavy for the panels to be applied in flatly, a wooden frame can be built as a backing for the panels.

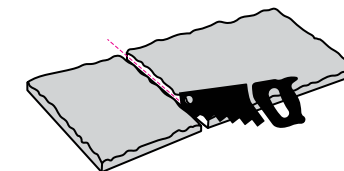


Step 2 – Layout Planning

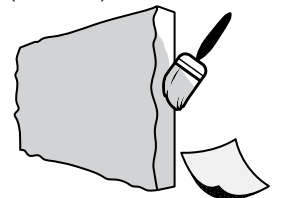
- A** Plan the panel layout.



- B** Some panels may need to be trimmed to fit your wall dimensions.



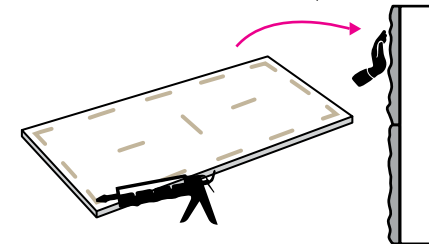
- C** Sand the trimmed part with sand paper and touch up with Archistra paint (Included).



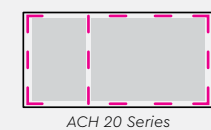
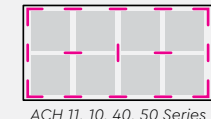
! Ensure the whole part is coated & fully dried.

Step 3 – Panel Application

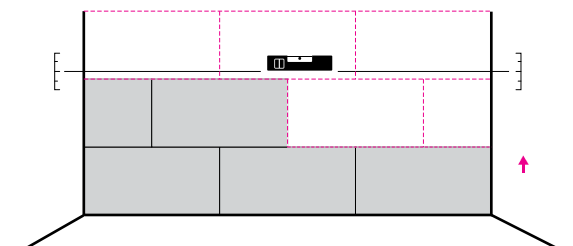
- A** Apply **construction adhesive** on the back of the panel and stick to the wall. Press and hold the panel a few seconds to ensure it is in place.



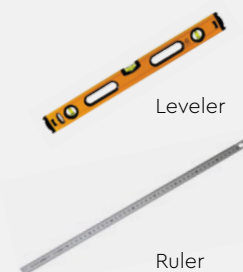
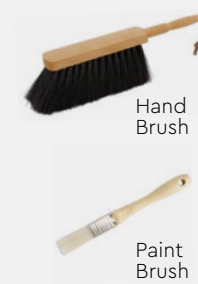
Recommended Adhesive Application



- B** Install the panels working from the bottom upwards. The use of a leveler is recommended.



Recommended Tools





ACH-1101

TECHNICAL SPECIFICATIONS

Series		ACH-11	ACH-60	ACH-50
Dimension (cm)		L120 x W60 x T1-2.5	L150 x W59 x T2-5.3	L120 x W60 x T1.5-4.8
Coverage Per Box (sqm)		4.32	3.54	2.88
Pieces Per Box		6	4	4
Weight (kg)				
kg/piece	(ECES) - (01 - 05)	1.4	-	-
kg/piece	(SGC) - (51 - 53)	2.2	-	-
Max. kg/box	(ECES) - (01 - 05)	10.0	-	-
Max. kg/box	(SGC) - (51 - 53)	15.0	-	-
kg/piece	(SP) - (01 - 06)	-	3.1	2.4
Max. kg/box	(SP) - (01 - 06)	-	15	11

Series		ACH-10	ACH-20	ACH-40
Dimension (cm)		L120 x W60 x T1-4.5	L120 x W60 x T3-9	L120 x W60 x T1-3
Coverage Per Box (sqm)		2.88	2.16	2.88
Pieces Per Box		4	3	4
Weight (kg)				
kg/piece	(SP) - (01 - 06)	2.2	2.8	2.0
kg/piece	(SGC) - (51)	3.3	3.9	3.1
Max. kg/box	(SP) - (01 - 06)	11.5	11.5	11.5
Max. kg/box	(SGC) - (51)	13.3	11.8	13.0

- * Data of weight presented is the maximum weight for every piece & box respectively.
- * Please allow a ± 5% tolerance for panel size, weight and colour.
- * Product may vary in colour due to lighting conditions and printing. We suggest you examine product samples before ordering.

SUZUKA®

WALL SEALER PRO

“ Make your wall finishes last longer! ”

5L

WALL SEALER PRO

5L

WALL SEALER PRO

20L

WALL SEALER PRO

Superior primer for concrete, skimmed or masonry surfaces.

This sealer that has good substrate penetration abilities to increase adhesion of product to prevent chalking or peeling off. It has excellent alkaline resistance properties that can prevent efflorescence. It is an ideal base coat for any SUZUKA® or any wall finish products.

Packing Size:

1L

5L

20L

Coverage	Drying Time (hour)		
6.5 - 8.5 m²/l/coat	Surface Dry : 1	Hard Dry : 5	Recoating : 5
	Substrate Temperature: 23°C - 26°C		

- Suitable for:

 - Masonry wall
 - Brickwork
 - Plaster
 - Skimmed Coat
 - Asbestos free substrate
- Features:

 - Excellent alkaline resistance to prevent efflorescence.
 - Good for new walls and repainting.
 - Prevents skim coat from chalking & peeling off.
 - Extremely good penetration.
 - Excellent adhesion.
 - Exterior and interior use.
 - Applicable with brush, roller or spray gun.

Airless Spray	Nozzle 1.8 - 2.0 mm	Spray Angle Degree 65° - 80°	Pressure 210 psi/150kg/cm²
---------------	---------------------	------------------------------	----------------------------