



# STRATO<sup>®</sup>

CEMENT TEXTURE & VELOURS

EDITION  
1.1

## WALL FINISH PROFESSIONALS

TAIWAN • MALAYSIA • THAILAND



*Matte & smooth*

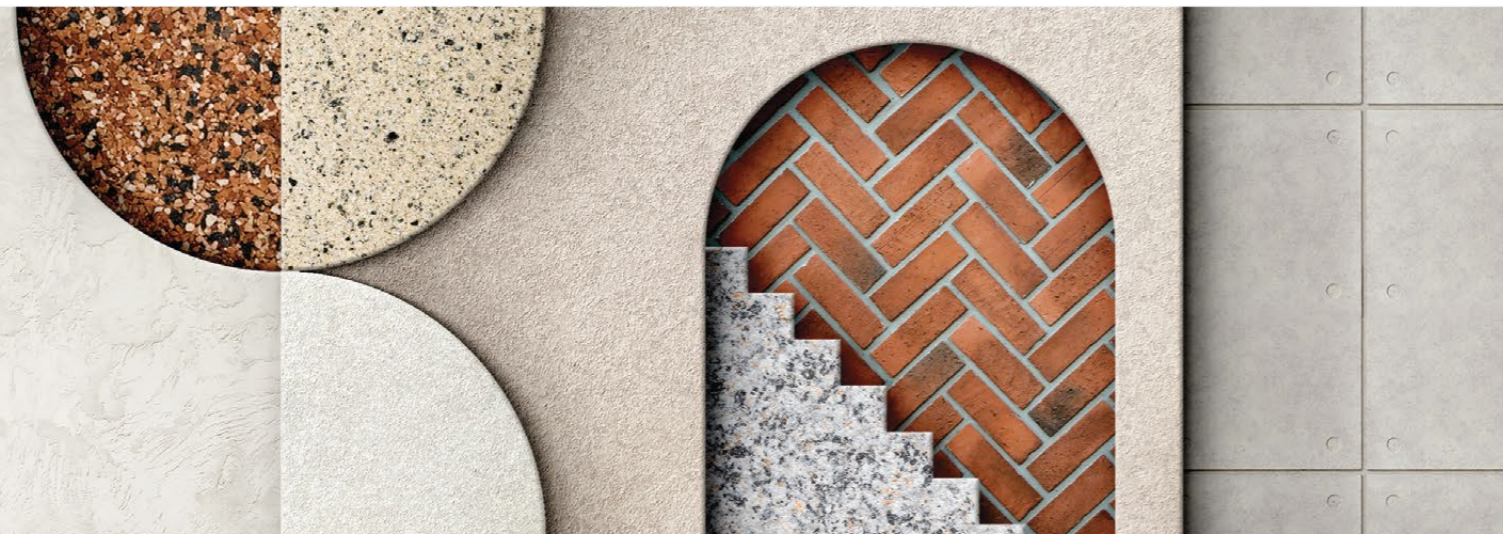
INTERIOR TEXTURED PAINTS

- Complies to the
- American California Proposition 65 Standard.
  - LEED, U.S. Green Building Council Standard.
  - Singapore Green Label.



WALL FINISH PROFESSIONALS.

SINCE 1977



BRICK & STONE VENEER • TEXTURED PAINT • KASTPANEL • ECES • TEXTURE COATING • PEBBLE STONE COATING



[suzuka.com.my](http://suzuka.com.my)

Instagram Facebook | [suzuka.group](https://www.suzuka.com.my) | Hotline : +6012-258 7388

\* Photos of the products shown in this catalogue may vary in color due to lighting condition & printing. We suggest you examine actual product samples before ordering.



SCT & SVL-E1.1-2404



# STRATO®

*Matte & smooth*

1

## STRATO® CEMENT TEXTURE

Page 3 - 12

2

## STRATO® VELOURS

Page 13 - 26



## SUZUKA® WALL SEALER PRO

“ Make your  
wall finishes  
last longer! ”



Packing Size: **1L** **5L** **20L**

### Superior primer for concrete, skimmed or masonry surfaces.

This sealer that has good substrate penetration abilities to increase adhesion of product to prevent chalking or peeling off.

It has excellent alkaline resistance properties that can prevent efflorescence. It is an ideal base coat for any SUZUKA® or any wall finish products.

Coverage	Drying Time (hour)	
<b>6.5 - 8.5</b> m <sup>2</sup> /l/coat	Surface Dry : <b>1</b>	Substrate Temperature: <b>23°C - 26°C</b>
	Hard Dry : <b>5</b>	
	Recoating : <b>5</b>	

#### Features:

- Excellent alkaline resistance to prevent efflorescence.
- Good for new walls and repainting.
- Prevents skim coat from chalking & peeling off.
- Extremely good penetration.
- Excellent adhesion.
- Exterior and interior use.
- Applicable with brush, roller or spray gun.

#### Suitable for:

- Masonry wall
- Brickwork
- Plaster
- Skimmed Coat
- Asbestos free substrate

Airless Spray		
Nozzle	Spray Angle Degree	Pressure
<b>1.8 - 2.0 mm</b>	<b>65° - 80°</b>	<b>210 psi/150kg/cm<sup>2</sup></b>

Create two different patterns with  
SCT or SVL using different tools and techniques!



## Trowel Pattern

Application  
with trowel.



## Piccolo Pattern

Application  
with piccolo tool.



# STRATO® Cement TEXTURE

# SCT



**SCT 301 - 311**

Create everlasting look with Strato® Cement Texture. Whether you are going for the industrial, scandinavian, contemporary or minimalistic style, the backdrop of the cement texture can complete the look.

Create two different patterns with Strato® Cement Texture using different tools and techniques!

## Appearance

Low Sheen	● ● ● ● ●	High Sheen
Smooth Texture	● ● ● ● ●	Rough Texture
Matte	● ● ● ● ●	Metallic

## Features

• Interior use only



Low VOC & Odor



Green Choice, Water Based & Eco-friendly



Formaldehyde & Lead Free



Crack Resistant



Anti-chalking & Efflorescence



Easy Application & DIY Friendly



Applicable on Ceiling



Easy to Touch Up



Easy Maintenance



Matte Finishing

- Complies to the
- American California Proposition 65
  - LEED, U.S. Green Building Council Standards
  - Singapore Green Label



SCT  
**Trowel Pattern**

Matte & Smooth  
 Finishing.



**SCT-301** Silver Grey



**SCT-302** Natural Grey



**SCT-303** Shark Grey



**SCT-304** Granite Grey



**SCT-305** Iron Grey



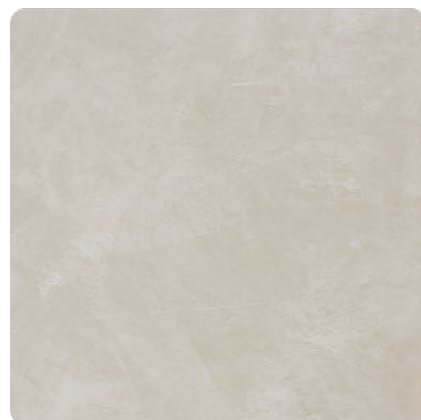
**SCT-306** Charcoal Grey



**SCT-307** Metal Grey



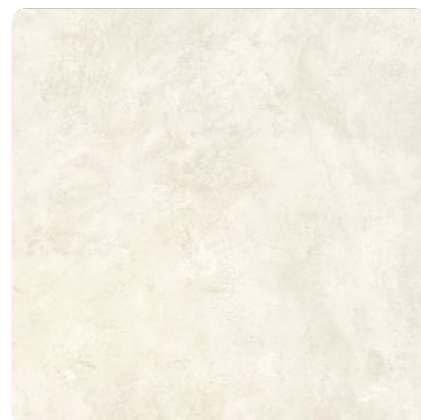
**SCT-308** Shadow Grey



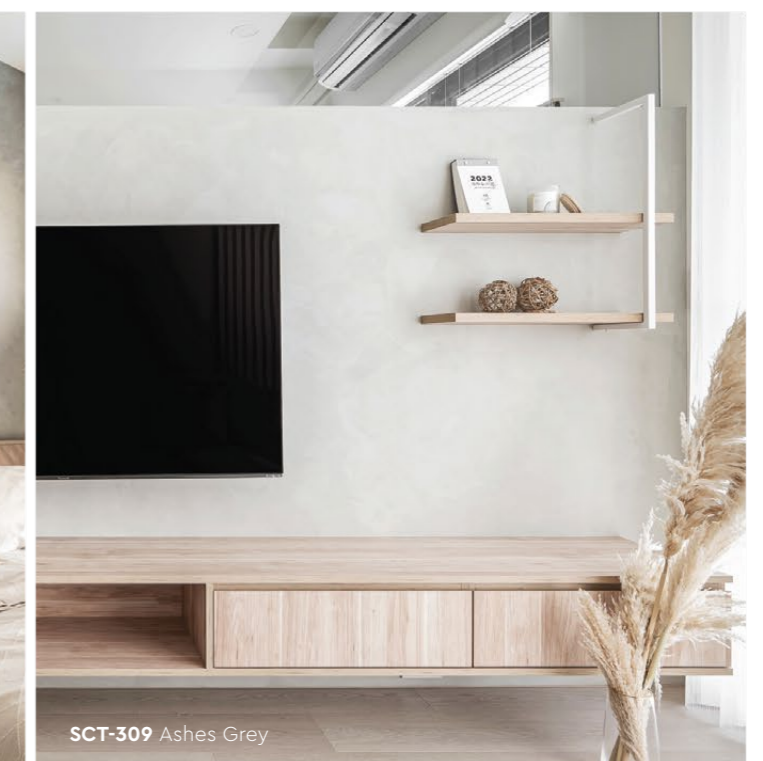
**SCT-309** Ashes Grey



**SCT-310** Misty Grey



**SCT-311** Dove White







Interior Design by  
**D EWANI**<sup>®</sup>

SCT-304 Granite Grey



SCT-301 Silver Grey



## Trowel Pattern

# Application Technique

Application Video



### Preparation:

- Cover the edges of surface that won't be painted by masking it with tape, paper or plastic.
- Clean up the wall surface to ensure it is free from dirt and dust.



## 1 Primer

Roll 2 layers of primer on the entire surface. Allow 30 minutes to dry between the layers.  
(The primer can be diluted with maximum 5% of clean water)

**Tool:** Roller



## 2 Sanding

Sand the entire surface in circular motion to ensure the surface is smooth.

**Tool:** 600 Grit Sand Paper



## 3 Texture Coat

Scrape texture coat randomly to create pattern. Ensure the whole surface area is covered. Then apply second layer.

(use a larger trowel for a larger pattern, a smaller trowel for smaller pattern)

**Tool:** Stainless Steel Trowel



## 4 Sanding (Optional)

Sand the entire surface in circular motion to enhance the pattern.

**Tool:** 600 Grit Sand Paper



## 5 Topcoat

Apply SR-Top 1 on entire surface using a dry sponge in circular motions.

**IMPORTANT:** Use a clean and dry sponge/cleaning cloth to wipe the excess topcoat before it dries to avoid the sponge marks.

**Tool:** Sponge / Cleaning Cloth

### IMPORTANT:

Color may vary on application technique & amount of material used.



## Packing Data

1 L	Primer
1 L	Texture Coat
0.5 L	Topcoat (SR-Top 1)

### Coverage (per set)

WALL	6 - 7 sqm
CEILING	5 - 6 sqm



**Tools:** Trowel/Scraper, Roller, Sand Paper (600 Grit), Sponge & Cleaning Cloth



SCT  
**Piccolo  
 Pattern**

Matte & Smooth  
 Finishing.



**SCT-301** Silver Grey



**SCT-302** Natural Grey



**SCT-303** Shark Grey



**SCT-304** Granite Grey



**SCT-305** Iron Grey



**SCT-306** Charcoal Grey



**SCT-307** Metal Grey



**SCT-308** Shadow Grey



**SCT-309** Ashes Grey



**SCT-310** Misty Grey



**SCT-311** Dove White



**SCT-302** Natural Grey



**SCT-306** Charcoal Grey



**SCT-301** Silver Grey

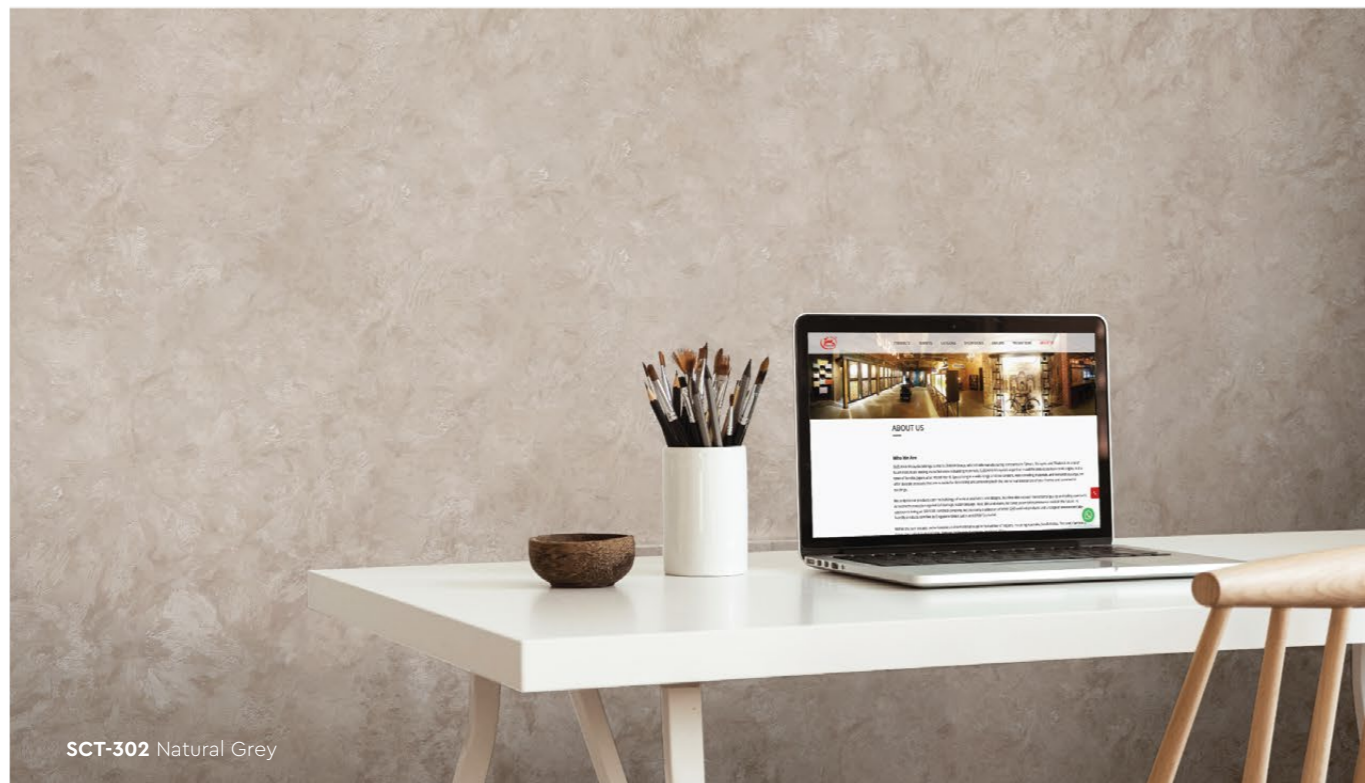




SCT-309 Ashes Grey



SCT-304 Granite Grey



SCT-302 Natural Grey

## Piccolo Pattern Application Technique

Application Video



### Preparation:

- Cover the edges of surface that won't be painted by masking it with tape, paper or plastic.
- Clean up the wall surface to ensure it is free from dirt and dust.



### 1 Primer

Roll 2 layers of primer on the entire surface. Allow 30 minutes to dry between the layers. (The primer can be diluted with maximum 5% of clean water)

**Tool:** Roller



### 2 Sanding

Sand the entire surface in circular motion to ensure the surface is smooth.

**Tool:** 600 Grit Sand Paper



### 3 Texture Coat

#### Step A : Trowel

Scrape texture coat evenly onto the surface.

**Tool:** Stainless Steel Trowel

#### Step B : Piccolo

Use piccolo tool to create swirl texture effects by moving with random circular motion.

**Tool:** Piccolo Tool

**Repeat Step A & B for a 2nd layer of texture coat**



### 4 Topcoat

Apply SR-Top 1 on entire surface using a dry sponge in circular motions.

**IMPORTANT:** Use a clean and dry sponge/cleaning cloth to wipe the excess topcoat before it dries to avoid the sponge marks.

**Tool:** Sponge / Cleaning Cloth

### IMPORTANT:

Color may vary on application technique & amount of material used.



## Packing Data

1 L	Primer
1 L	Texture Coat
0.5 L	Topcoat (SR-Top 1)

### Coverage (per set)

WALL	6 - 7 sqm
CEILING	5 - 6 sqm



**Tools:** Trowel, Piccolo, Roller, Sand Paper (600 Grit), Sponge & Cleaning Cloth



# STRATO® Velours



# SVL



**SVL 401 - 426**

Rich velvety layers of color to enhance the interior space. Each color brings out a different mood and ambience, find a color that matches your personality

Create two different patterns with Strato® Velours using different tools and techniques!

## Appearance

Low Sheen	● ● ● ● ●	High Sheen
Smooth Texture	● ● ● ● ●	Rough Texture
Matte	● ● ● ● ●	Metallic

## Features

• Interior use only



Low VOC & Odor



Green Choice, Water Based & Eco-friendly



Formaldehyde & Lead Free



Crack Resistant



Anti-chalking & Efflorescence



Easy Application & DIY Friendly



Applicable on Ceiling



Easy to Touch Up



Easy Maintenance



Matte Finishing

Complies to the  
 • American California Proposition 65  
 • LEED, U.S. Green Building Council Standards  
 • Singapore Green Label



SVL  
**Trowel  
 Pattern**

Matte & Smooth  
 Finishing.



**SVL-401** Cloudy Grey



**SVL-402** Mushroom Beige



**SVL-403** Hazel Wood



**SVL-404** Summer Sahara



**SVL-405** Walnut Leather



**SVL-406** Brocade Blue



**SVL-407** Deep Marine



**SVL-408** Royal Denim



**SVL-409** Violet Memory



**SVL-410** Rosy Mauve



**SVL-411** Frosted Mint



**SVL-406** Brocade Blue



**SVL-404** Summer Sahara



**SVL-401** Cloudy Grey



**SVL-404** Summer Sahara





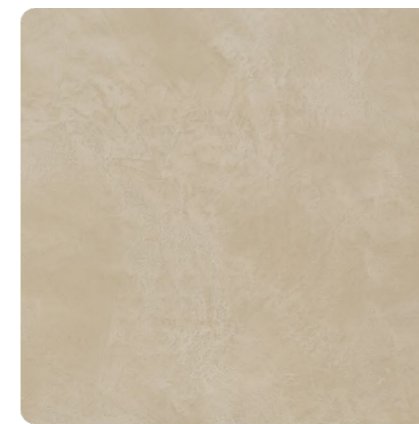
**SVL-410** Rosy Mauve



**SVL-417** Vanilla Cream



**SVL-417** Vanilla Cream



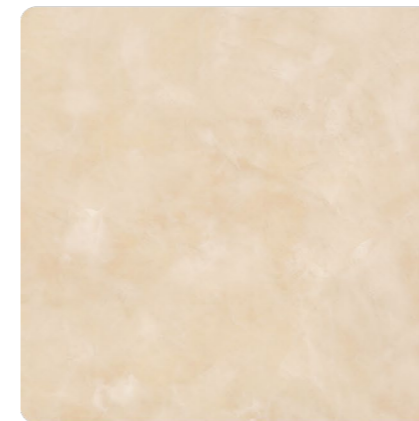
**SVL-415** Lime Mist



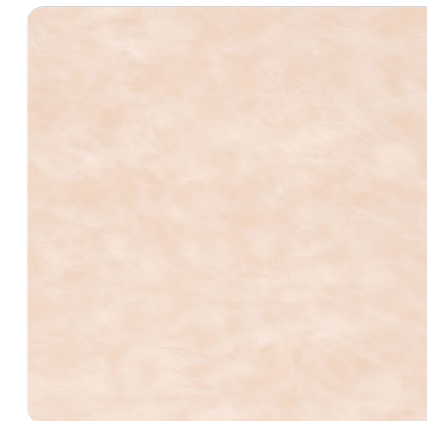
**SVL-416** Flamingo Blush



**SVL-417** Vanilla Cream



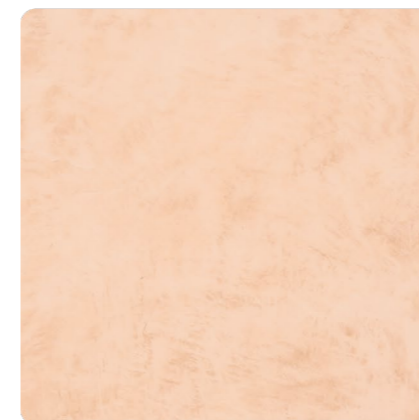
**SVL-418** Oat Beige



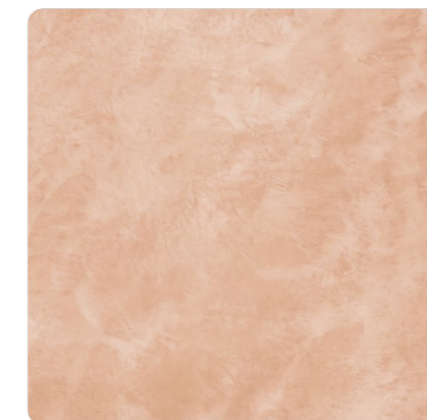
**SVL-419** Blush Cream



**SVL-420** Wheat Beige



**SVL-421** Light Apricot



**SVL-422** Coral Peach



**SVL-423** Lime Citrus



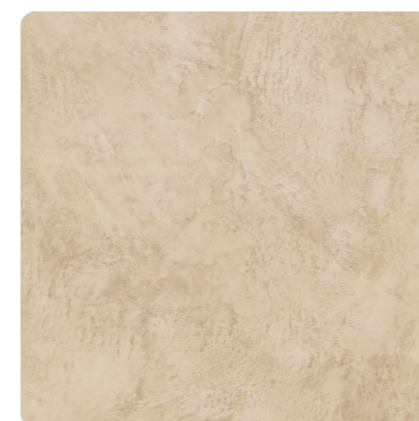
**SVL-412** Vivid Emerald



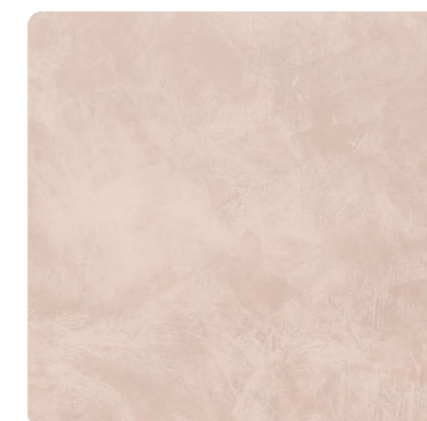
**SVL-413** Hunter Green



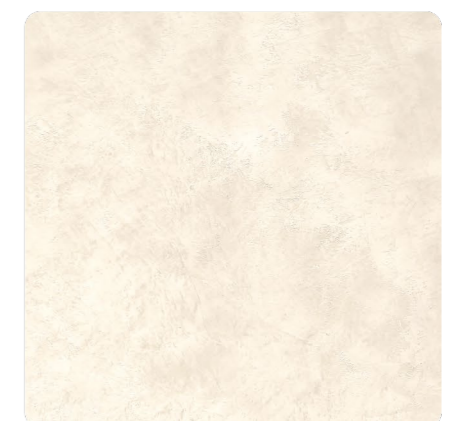
**SVL-414** Herbal Garden



**SVL-424** Dried Basil



**SVL-425** Mauve Chalk



**SVL-426** Dewy Ivory





SVL-413 Hunter Green



SVL-425 Mauve Chalk



SVL-408 Royal Denim



SVL-408 Royal Denim

Trowel Pattern

# Application Technique

Application Video



Preparation:

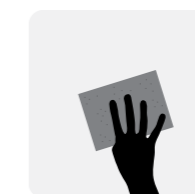
- Cover the edges of surface that won't be painted by masking it with tape, paper or plastic.
- Clean up the wall surface to ensure it is free from dirt and dust.



## 1 Primer

Roll 2 layers of primer on the entire surface. Allow 30 minutes to dry between the layers. (The primer can be diluted with maximum 5% of clean water)

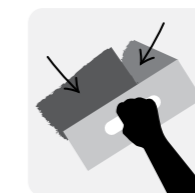
**Tool:** Roller



## 2 Sanding

Sand the entire surface in circular motion to ensure the surface is smooth.

**Tool:** 600 Grit Sand Paper



## 3 Texture Coat

Scrape texture coat randomly to create pattern. Ensure the whole surface area is covered. Then apply second layer.

(use a larger trowel for a larger pattern, a smaller trowel for smaller pattern)

**Tool:** Stainless Steel Trowel



## 4 Sanding (Optional)

Sand the entire surface in circular motion to enhance the pattern.

**Tool:** 600 Grit Sand Paper



## 5 Topcoat

Apply SR-Top 1 on entire surface using a dry sponge in circular motions.

**IMPORTANT:** Use a clean and dry sponge/cleaning cloth to wipe the excess topcoat before it dries to avoid the sponge marks.

**Tool:** Sponge / Cleaning Cloth

**IMPORTANT:**

Color may vary on application technique & amount of material used.

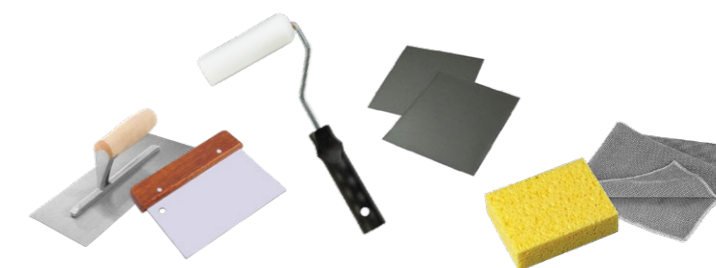


## Packing Data

1 L	Primer
1 L	Texture Coat
0.5 L	Topcoat (SR-Top 1)

**Coverage** (per set)

WALL	6 - 7 sqm
CEILING	5 - 6 sqm



**Tools:** Trowel/Scraper, Roller, Sand Paper (600 Grit), Sponge & Cleaning Cloth



SVL  
**Piccolo  
 Pattern**

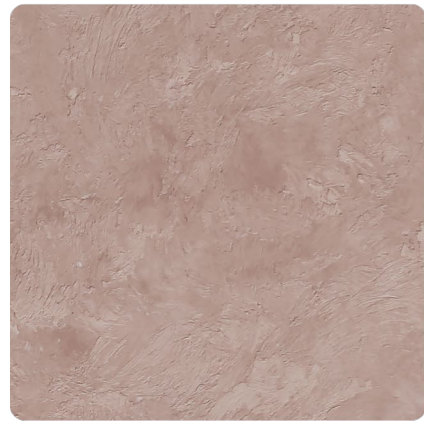
Matte & Smooth  
 Finishing.



**SVL-401** Cloudy Grey



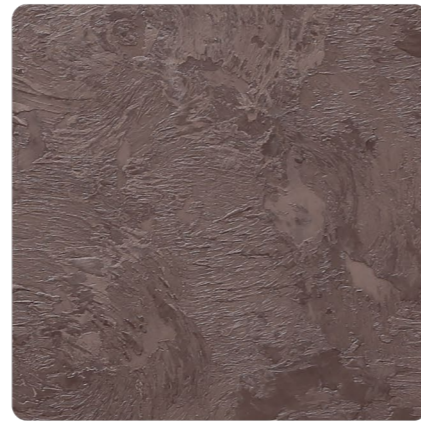
**SVL-402** Mushroom Beige



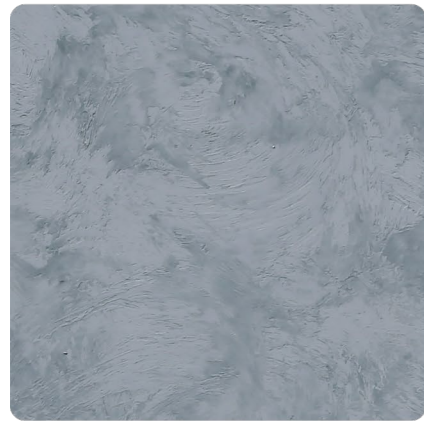
**SVL-403** Hazel Wood



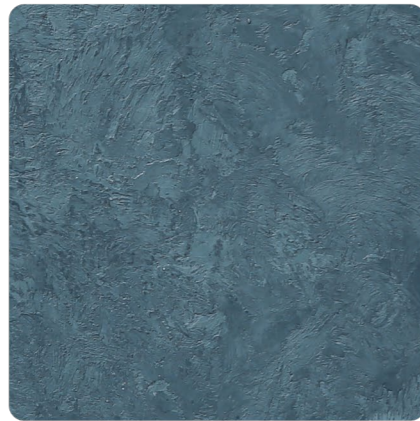
**SVL-404** Summer Sahara



**SVL-405** Walnut Leather



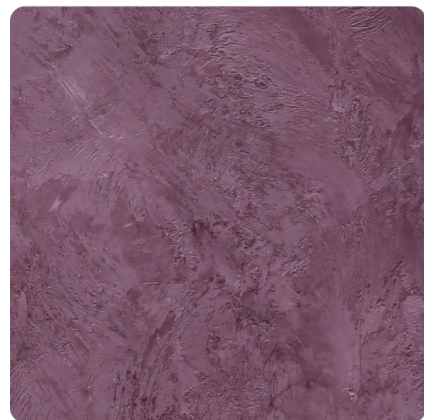
**SVL-406** Brocade Blue



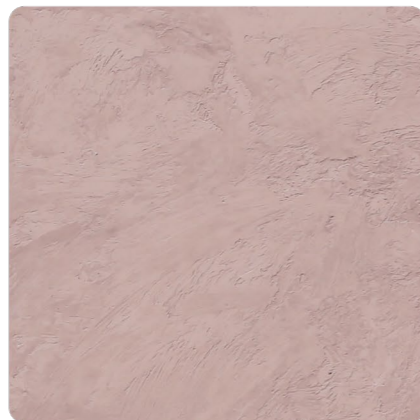
**SVL-407** Deep Marine



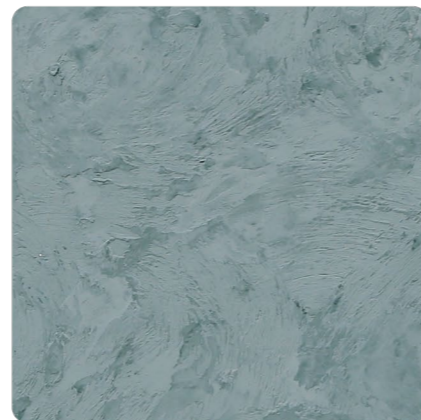
**SVL-408** Royal Denim



**SVL-409** Violet Memory



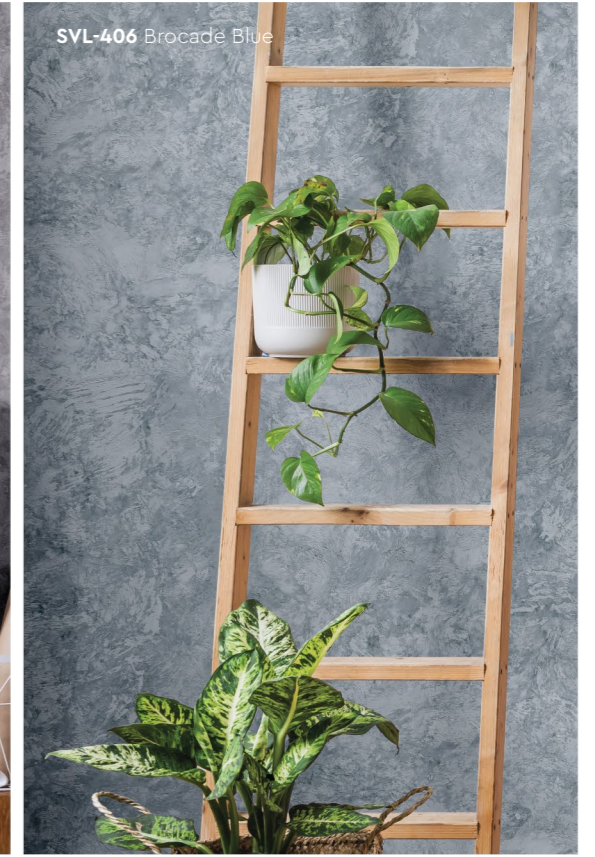
**SVL-410** Rosy Mauve



**SVL-411** Frosted Mint



SVL-401 Cloudy Grey



SVL-406 Brocade Blue



SVL-402 Mushroom Beige





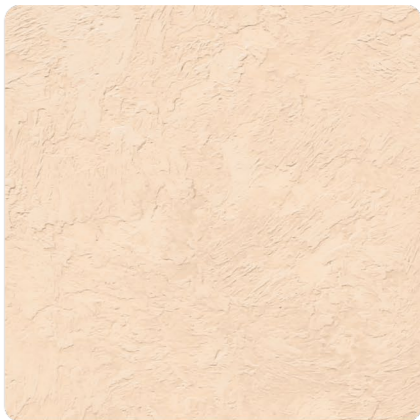
SVL-414 Herbal Garden



SVL-415 Lime Mist



SVL-416 Flamingo Blush



SVL-417 Vanilla Cream



SVL-418 Oat Beige



SVL-419 Blush Cream



SVL-420 Wheat Beige



SVL-421 Light Apricot



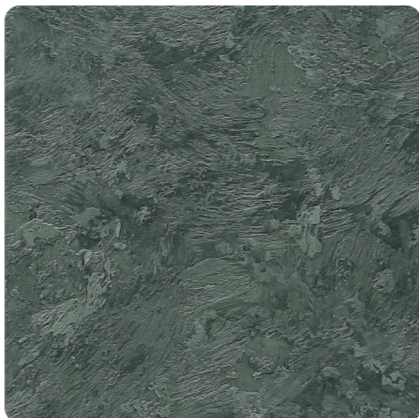
SVL-422 Coral Peach



SVL-423 Lime Citrus



SVL-412 Vivid Emerald



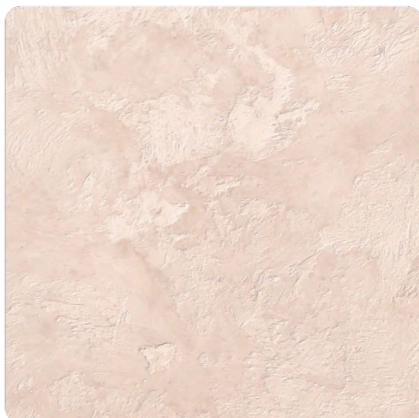
SVL-413 Hunter Green



SVL-414 Herbal Garden



SVL-424 Dried Basil



SVL-425 Mauve Chalk



SVL-426 Dewy Ivory





SVL-420 Wheat Beige



SVL-425 Mauve Chalk



SVL-422 Coral Peach



## Packing Data

1 L	Primer
1 L	Texture Coat
0.5 L	Topcoat (SR-Top 1)

### Coverage (per set)

WALL	6 - 7 sqm
CEILING	5 - 6 sqm

## Piccolo Pattern

# Application Technique

Application Video



### Preparation:

- Cover the edges of surface that won't be painted by masking it with tape, paper or plastic.
- Clean up the wall surface to ensure it is free from dirt and dust.



## 1 Primer

Roll 2 layers of primer on the entire surface. Allow 30 minutes to dry between the layers. (The primer can be diluted with maximum 5% of clean water)

**Tool:** Roller



## 2 Sanding

Sand the entire surface in circular motion to ensure the surface is smooth.

**Tool:** 600 Grit Sand Paper



## 3 Texture Coat

### Step A : Trowel

Scrape texture coat evenly onto the surface.

**Tool:** Stainless Steel Trowel

### Step B : Piccolo

Use piccolo tool to create swirl texture effects by moving with random circular motion.

**Tool:** Piccolo Tool

**Repeat Step A & B for a 2nd layer of texture coat**



## 4 Topcoat

Apply SR-Top 1 on entire surface using a dry sponge in circular motions.

**IMPORTANT:** Use a clean and dry sponge/cleaning cloth to wipe the excess topcoat before it dries to avoid the sponge marks.

**Tool:** Sponge / Cleaning Cloth

### IMPORTANT:

Color may vary on application technique & amount of material used.



**Tools:** Trowel, Piccolo, Roller, Sand Paper (600 Grit), Sponge & Cleaning Cloth