



BRICK VENEER

STONE VENEER



FLAT BRICK

Code	Boxes / pallet	Coverage (sqf / box)	Pieces / box	RM / sqf	RM / box
AR-3001 ~ 3004	144	10.3 ~ 10.5	60	20.40	210
BL-6101 ~ 6108	120	8.0 ~ 8.2	46	14.75	118
BQ-001 ~ 006	48	8.3 ~ 8.6	8	21.25	176
DS-101 ~ 106	32	10.8 ~ 11.2	110	14.65	158
DS-501 ~ 506	32	12.1 ~ 12.5	60	14.90	180
DS-901 ~ 906	40	12.6 ~ 12.9	96	14.30	180
EG-101 ~ 102 (NEW)	40	7.2 ~ 7.7	18	20.85	150
EG-201 ~ 202 (NEW)	24	9.2 ~ 9.7	80	20.15	185
EG-301 ~ 302 (NEW)	24	8.8 ~ 9.3	36	22.05	194
EG-401 ~ 403 (NEW)	36	7.6 ~ 8.0	30	22.65	172
BK-1101 ~ 1106	48	13.9 ~ 14.3	104	13.85	192
BK-1101 ~ 1106 (Without Grouting)	48	11.8 ~ 12.0	104	16.30	192
BK-1201 ~ 1206	48	13.7 ~ 14.5	104	14.05	192
BK-1201 ~ 1206 (Without Grouting)	48	11.8 ~ 12.1	104	16.30	192
BK-1301 ~ 1306	48	13.1 ~ 13.5	104	14.70	192
BK-1301 ~ 1306 (Without Grouting)	48	11.2 ~ 11.6	104	17.15	192
BK-3101 ~ 3111	64	7.7 ~ 7.9	48	15.35	118
BK-4101 ~ 4106	48	8.6 ~ 8.9	30	17.45	150
BK-7101 ~ 7108	48	8.4 ~ 8.6	55	17.50	147

CORNER BRICK

Code	Boxes / pallet	Coverage (f / box)	Pieces / box	RM / f	RM / box
-	-	-	-	-	-
-	-	-	-	-	-
-	-	-	-	-	-
DS-101C ~ 106C	32	9.0 ~ 9.2	56	21.00	189
DS-501C ~ 506C	32	10.5 ~ 10.7	32	19.35	203
DS-901C ~ 906C	40	6.8 ~ 7.2	30	23.85	162
-	-	-	-	-	-
-	-	-	-	-	-
-	-	-	-	-	-
-	-	-	-	-	-
-	-	-	-	-	-
-	-	-	-	-	-
-	-	-	-	-	-
-	-	-	-	-	-
-	-	-	-	-	-
BK-3101C ~ 3110C	64	5.0 ~ 5.2	21	19.00	95
BK-4101C ~ 4106C	48	4.8 ~ 5.1	16	23.35	112
-	-	-	-	-	-

FLAT STONE

Code	Boxes / pallet	Coverage (sqf / box)	Pieces / box	RM / sqf	RM / box
KST-1001 ~ 1004A	48	7.6 ~ 7.8	6	23.95	182
PS-2001 ~ 2005	24	9.4 ~ 9.8	12	24.15	227
PS-2006	24	9.4 ~ 9.8	12	26.81	252
DS-001 ~ 004	32	6.9 ~ 7.6	14	22.61	156
DS-011 ~ 018	32	5.9 ~ 6.5	12	23.05	136
DS-021	24	6.2 ~ 6.5	17 ~ 21	22.42	139
DS-024	20	5.8 ~ 6.2	20 ~ 24	25.34	147
DS-031 ~ 034	32	6.8 ~ 7.2	19 ~ 23	20.74	141
DS-041 ~ 047	24	7.0 ~ 7.4	17 ~ 21	20.14	141
DS-053	32	7.3 ~ 7.7	14 ~ 18	21.09	154
DS-062	20	6.3 ~ 6.7	21 ~ 24	26.19	165
DS-071 ~ 075	24	5.9 ~ 6.3	12 ~ 14	20.85	123
DS-081	24	6.2 ~ 6.6	20 ~ 24	22.74	141
DS-091 ~ 094	24	5.9 ~ 6.2	10 ~ 15	26.10	154
DS-111 ~ 119	32	10.5 ~ 10.8	20	17.43	183
DS-171 ~ 172 (NEW)	24	5.9 ~ 6.3	24 ~ 27	21.86	129
DS-191 ~ 192 (NEW)	30	3.7 ~ 4.2	3	42.43	157
DS-201	32	6.2 ~ 6.5	6 ~ 9	27.10	168
DS-301 ~ 306	24	7.2 ~ 7.8	16	22.08	159
DS-401 ~ 403	32	6.9 ~ 7.6	14	28.12	194
DS-601 ~ 609	48	6.1 ~ 6.5	12	20.00	122
DS-701 ~ 703	24	10.2 ~ 11.0	12	22.16	226
DS-801 ~ 809	24	10.5 ~ 10.8	35	23.05	242

CORNER STONE

Code	Boxes / pallet	Coverage (f / box)	Pieces / box	RM / f	RM / box
-	-	-	-	-	-
-	-	-	-	-	-
-	-	-	-	-	-
DS-001C ~ 004C	32	5.1 ~ 5.3	16	27.05	138
DS-011C ~ 018C	32	5.1 ~ 5.3	16	27.25	139
DS-021C	20	5.1 ~ 5.3	16 ~ 18	30.99	158
DS-024C	20	4.8 ~ 5.1	16 ~ 18	36.88	177
DS-031C	32	4.9 ~ 5.1	8	25.10	123
DS-041C ~ 045C	24	5.9 ~ 6.1	8	24.57	145
-	-	-	-	-	-
DS-062C	20	5.1 ~ 5.3	12 ~ 16	32.75	167
DS-071C ~ 073C	20	5.9 ~ 6.1	7 ~ 8	24.74	146
DS-081C	20	4.9 ~ 5.1	15	30.61	150
DS-091C ~ 094C	20	5.1 ~ 5.3	12	29.41	150
-	-	-	-	-	-
-	-	-	-	-	-
-	-	-	-	-	-
DS-301C ~ 306C	24	6.1 ~ 6.3	16	25.57	156
DS-401C ~ 403C	32	5.1 ~ 5.3	16	33.73	172
-	-	-	-	-	-
DS-701C ~ 703C	24	8.3 ~ 8.7	14	29.03	241
DS-801C ~ 809C	24	7.5 ~ 7.8	40	29.20	219

* The packing coverage and length for BK-11, BK-12, BK-13, BK-31, BK-41, AR-30, BQ-00, DS-90, BL-61 and BK-71 series are inclusive of groove line application.

* Please allow a +/- 5% tolerance for color and packing of the artificial stone. We suggest examining actual product samples before ordering.



RETAIL PRICE LIST (PM)
2404-01

KASTONE®

BRICK & STONE VENEER COLLECTION

Model Code	Coverage (sqf)	RM/sqf	RM/box
WS-1001 (Big)	Size: 19cm x 19cm 4.8 sqf/ box (12 pcs)	30.00	144
WS-2001 (Small)	Size: 9.5cm x 19cm 4.6 sqf/ box (24 pcs)	39.13	181
WS-3001 ~ WS-3005	Size: 12cm x 60cm 10.5 ~ 10.7 sqf/ box (14 pcs)	18.48	194
AS-5201L, 5201M, 5201R	Size: 44cm x 12cm x 5.5cm (1pc)	-	27

* The packing coverage and length for DS-02, DS-06, DS-07, DS-08 and DS-09 series are inclusive of groove line application.

* Please allow a +/- 5% tolerance for color and packing of the artificial stone. We suggest examining actual product samples before ordering.

TROWEL STONE

PEBBLE
STONE
COATING

TROWEL WALL (TW)

Product	Coverage (sqf)	Packing	RM/Sqf	RM/Set
TW-S-XXX	55 ~ 61	25 kg / Set	RM 5.44	RM 299
TW-A-XXX	43 ~ 48	25 kg / Set	RM 6.95	RM 299
TW-B-XXX	32 ~ 36	25 kg / Set	RM 9.34	RM 299
TW-C-XXX	22 ~ 25	25 kg / Set	RM 13.59	RM 299
TW-Binder (Resin only)	For 20kg Pebbles	6.5 kg		RM 238
TW-Primer - 4L	180 ~ 220	4 Ltr / Drum		RM 137
TW-Primer - 18L	800 ~ 1000	18 Ltr / Drum		RM 597

* Old codes (TR - S,A,B,C -XXX) are still in use simultaneously until further notice.

TROWEL FLOOR (TF)

Product	Coverage (sqf)	Packing	RM/Sqf	RM/Set
TF-A-XXX	29 ~ 33	14 kg / Set	RM 10.31	RM 299
TF-B-XXX	27 ~ 31	17 kg / Set	RM 11.07	RM 299
TF-C-XXX	24 ~ 27	21 kg / Set	RM 12.46	RM 299
TF-D-XXX	18 ~ 21	21 kg / Set	RM 16.61	RM 299
TF-Binder + Primer	For 19kg Pebbles (#3,#5)	1 Set		RM 244
TF-Primer	30 ~ 40	500 g / Drum		RM 95

* Old codes (TF - 001~ 012) are still in use simultaneously until further notice.

** All Premium Trowel Floor set includes PRIMER.

*** TF Binder MUST be used with TF Primer to achieve optimal result.

STONECARE

Product	Coverage (sqf)	Packing	RM/Tin
Glossy - 1L	70 ~ 100 sqf / Ltr	12 Tins / Ctn	RM 36
Glossy - 4L	70 ~ 100 sqf / Ltr	6 Tins / Ctn	RM 120
Glossy - 18L	70 ~ 100 sqf / Ltr	Loose	RM 437
Natural - 1L	80 ~ 110 sqf / Ltr	12 Tins / Ctn	RM 39
Natural - 5L	80 ~ 110 sqf / Ltr	6 Tins / Ctn	RM 148
Natural - 18L	80 ~ 110 sqf / Ltr	Loose	RM 451

* 1Ltr Stonecare packaging is now 12 tins per carton.

KASTBOND

Product	Packing	Coverage (m ² /set)	RM/Sqf	RM/Set
james'BOND ^{b2}	2+4 kg / SET (including 350ml SEALER)	2 ~ 3 m ²	RM 2.83	RM 61
	10+20 kg / SET (including 1L SEALER)	10 ~ 12 m ²	RM 1.70	RM 183
eziBOND ⁱ⁵	5 kg / SET (including 1L SEALER)	2.2 ~ 2.5 m ²	RM 4.65	RM 110
	20 kg / SET (including 1L SEALER)	9 ~ 10 m ²	RM 3.52	RM 341
topBOND ^{t7}	5 kg / SET (including 350ml SEALER)	2.2 ~ 2.5 m ²	RM 6.17	RM 146
	20 kg / SET (including 1L SEALER)	9 ~ 10 m ²	RM 5.04	RM 488
SEALER	1 Litre	10 ~ 12 m ²	RM 0.20	RM 22



ARCHISTRA

WALL PANEL SERIES

ARCHISTRA								
Series	Packing (Box)	Coverage (Box)	Model: 01 - 06 (SP)			Model: 51 (SGC)		
			RM/sqf	RM/piece	RM/Box	RM/sqf	RM/piece	RM/Box
ACH-10	4 pcs	2.88 sqm	RM 19.23	RM 149	RM 596	RM 22.58	RM 175	RM 700
	1 pc	0.72 sqm	RM 23.23	RM 180	RM 180	RM 26.71	RM 207	RM 207
ACH-20	3 pcs	2.16 sqm	RM 22.71	RM 176	RM 528	RM 25.94	RM 201	RM 603
	1 pc	0.72 sqm	RM 26.58	RM 206	RM 206	RM 29.94	RM 232	RM 232
ACH-40	4 pcs	2.88 sqm	RM 18.58	RM 144	RM 576	RM 21.94	RM 170	RM 680
	1 pc	0.72 sqm	RM 22.58	RM 175	RM 175	RM 25.94	RM 201	RM 201



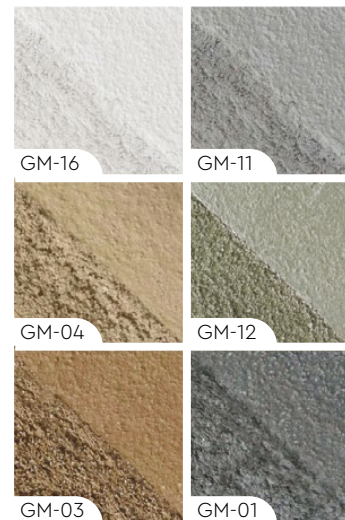
SUZUKA
WALL FINISH PROFESSIONALS

RETAIL PRICE LIST
PENINSULAR MALAYSIA
2404-01



KASTONE® GROUTING

Weight	Packing	RM/Box	RM/Pack
3.5kg/pack	4 packs/box	RM 57.20	RM 14.30
1kg/pack	14 packs/box	RM 66.80	RM 4.80



Prior ordering, please contact
(03) 3291 0722 to check stock status.

• May vary in colour due to lighting conditions & printing. We highly recommend seeing actual samples before ordering.

KASTONE® EASY

CONSTRUCTION ADHESIVE

Price/ Unit
(290ml/ 490g)

RM 16.40

APPLICABLE ON TILES!
(With Kastone BL or AR Series)

Instant Grab

Ideal for SUZUKA® Brick Veneer & Wall Panel Series.

USAGE TIPS:

- Tip cutting: diameter **6 mm** slanting.
- Apply & hold veneer on wall for few seconds.



suzuka.com.my

suzuka.group | Hotline : +6012-258 7388

• May vary in colour due to lighting conditions & printing. We highly recommend seeing actual samples before ordering.



PRICE LIST-PM-2404-01/KS

STRATO®

INTERIOR TEXTURED PAINT COLLECTION



(SCH / STL SET)

(STS SET)

(SCT / SVL / SRT SET)



Linnen
Texture Roller
RM 50



Piccolo
Tool
RM 18

Product	Code	Set	Packing	Coverage	Price
CEMENT TEXTURE	SCT 301 - 311	2.5 L	1L Primer / 1L Texture Coat / 0.5L Top Coat	6 - 7 m ² / set	RM 204
		10 L	4L Primer / 4L Texture Coat / 2L Top Coat	24 - 28 m ² / set	RM 765
VELOURS	SVL 401 - 426	2.5 L	1L Primer / 1L Texture Coat / 0.5L Top Coat	6 - 7 m ² / set	RM 204
		10 L	4L Primer / 4L Texture Coat / 2L Top Coat	24 - 28 m ² / set	RM 765
TAFFETA	SRT 201 - 233	2.5 L	1L Primer / 1L Texture Coat / 0.5L Top Coat	4,5 m ² / set	RM 204
		10 L	4L Primer / 4L Texture Coat / 2L Top Coat	18 m ² / set	RM 736
CASHMERE	SCH 001 - 021	3 L	1L Primer / 1L Texture Coat / 1L Top Coat / Plastic Spatula	6 - 7 m ² / set	RM 204
		12 L	4L Primer / 4L Texture Coat / 4L Top Coat / Plastic Spatula	24 - 28 m ² / set	RM 765
METALLICS ORGANZA	SMO 701 - 717	2 L	1L Primer / 1L Texture Coat	6 - 7 m ² / set	RM 204
		8 L	4L Primer / 4L Texture Coat	24 - 28 m ² / set	RM 765
METALLICS MERINO	SMM 801 - 814	2 L	1L Primer / 1L Texture Coat	3 - 4 m ² / set	RM 204
		8 L	4L Primer / 4L Texture Coat	12 - 16 m ² / set	RM 765
SATIN	STS 501 - 509	2 L	1L Primer / 1L Texture Coat	6 - 7 m ² / set	RM 209
		8 L	4L Primer / 4L Texture Coat	24 - 28 m ² / set	RM 784
LINNEN	STL 901 - 913	3 L	1L Primer / 2L Texture Coat	9 - 10 m ² / set	RM 204
		12 L	4L Primer / 8L Texture Coat	36 - 40 m ² / set	RM 765



EXTERIOR CEMENT TEXTURE PAINT




Set	MCT 2.8 L	MCT 11.2 L
Packing	1L Primer 1L Texture Coat 0.8L Top Coat	4L Primer 4L Texture Coat 3.2L Top Coat
Coverage (m ²)	6 - 7 m ² / set	24 - 28 m ² / set
Price/Set	RM 244	RM 908



RETAIL PRICE LIST (PM)
2404-01

TEXTURE COATING



Product	MGM Magic Granite	NSC Stony Coat	TC Ceramic Coat	Spray Gun
Packing	Texture (25kgs) EM-Primer (1L) FSI Clear Top Coat (1L)	Texture (25kgs) EM-Primer (1L) FSI Clear Top Coat (1L)	Texture (25kgs) EM-Primer (1L) FSI Clear Top Coat (1L)	
Coverage	5 - 6 m ²	5 - 6 m ²	7 - 8 m ²	
Price/set	RM 335	RM 311	RM 311	RM 530

Unit Price

Texture Coat	Packing	Coverage	RM/unit	Product	Packing	Coverage	RM/unit
MGM Magic Granite	25 kg	5 - 6 m ²	RM 296	Primer (EMP)	1L	7 - 9 m ²	RM 35
NSC Stony Coat	25 kg	5 - 6 m ²	RM 270		18L	126 - 162 m ²	RM 297
TC Ceramic Coat	25 kg	7 - 8 m ²	RM 270	Topcoat (FSI)	1L	8 - 10 m ²	RM 59
					15L	120 - 150 m ²	RM 617

MODENA COATING

Product	Primer (EMP)	Texture Coat	Top Coat (FSI)
Packing	1L	10 kg	25 kg
Coverage	7 - 9 m ² /l	2.5 - 7.0 m ² *	6.25 - 17.5 m ² *
Price	RM 35	RM 120	RM 59

* The coverage of texture may vary depending on type of pattern chosen. Please refer Modena Coating catalogue for the coverage specifications.



SUZUKA® WALL SEALER PRO

“ Make your wall finishes last longer! ”



Superior primer for concrete, skimmed or masonry surfaces.

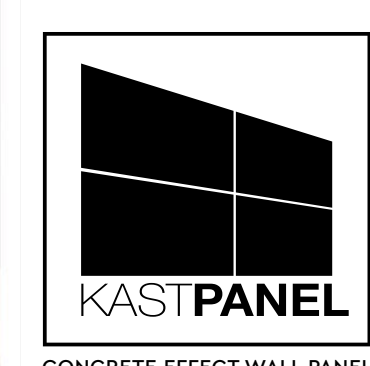
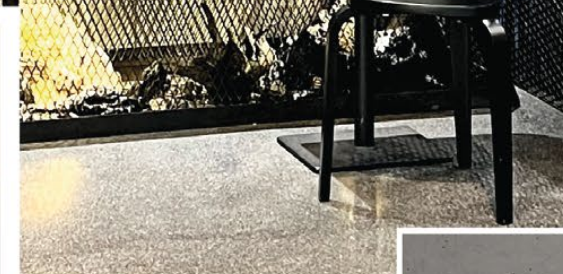
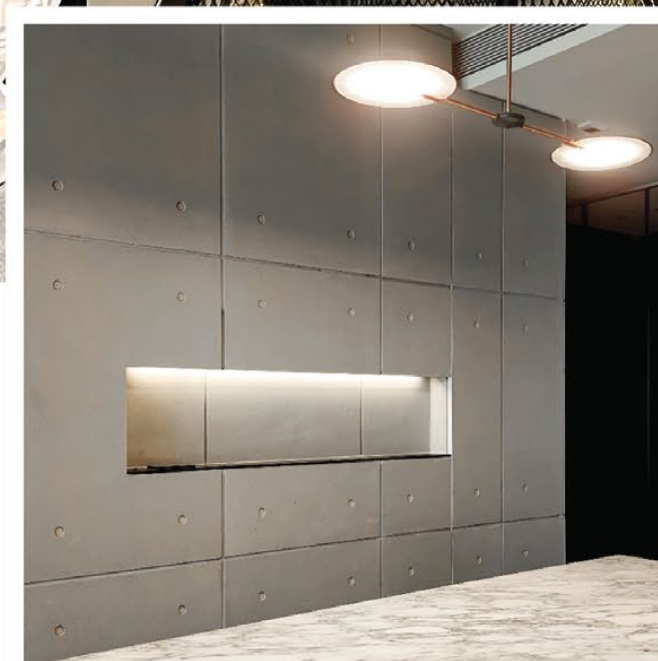
Packing	1L	5L	20L
Price	RM 39.90	RM 131.10	RM 342
Coverage	6.5 - 8.5 m ² /l/coat		

Features:

- Excellent alkaline resistance to prevent efflorescence.
- Good for new walls and repainting.
- Prevents skim coat from chalking & peeling off.
- Extremely good penetration.
- Excellent adhesion.
- Exterior and interior use.
- Applicable with brush, roller or spray gun.

Suitable for:

- Masonry wall
- Brickwork
- Plaster
- Skimmed Coat
- Asbestos free substrate



Product	Packing	Coverage (Sqf)	RM/Sqf	RM/Piece	RM/Box
KPC-003	10 pcs / box	3 sqf / pc	RM 17.80	RM 53.40	RM 534.00
	2 pcs / box		RM 21.85	RM 65.50	RM 131.00
KPC-006	6 pcs / box	6 sqf / pc	RM 17.80	RM 106.85	RM 641.00
	1 pc / box		RM 21.83	RM 131.00	RM 131.00
KPC-009	4 pcs / box	9 sqf / pc	RM 18.47	RM 166.25	RM 665.00
	1 pc / box		RM 22.78	RM 205.00	RM 205.00



SUZUKA
WALL FINISH PROFESSIONALS

RETAIL PRICE LIST
PENINSULAR
MALAYSIA
2404-01



suzuka.com.my

Instagram Facebook | suzuka.group | Hotline : +6012-258 7388

• May vary in colour due to lighting conditions & printing.
We highly recommend seeing actual samples before ordering.



PRICE LIST-PM-2404-01/ST