

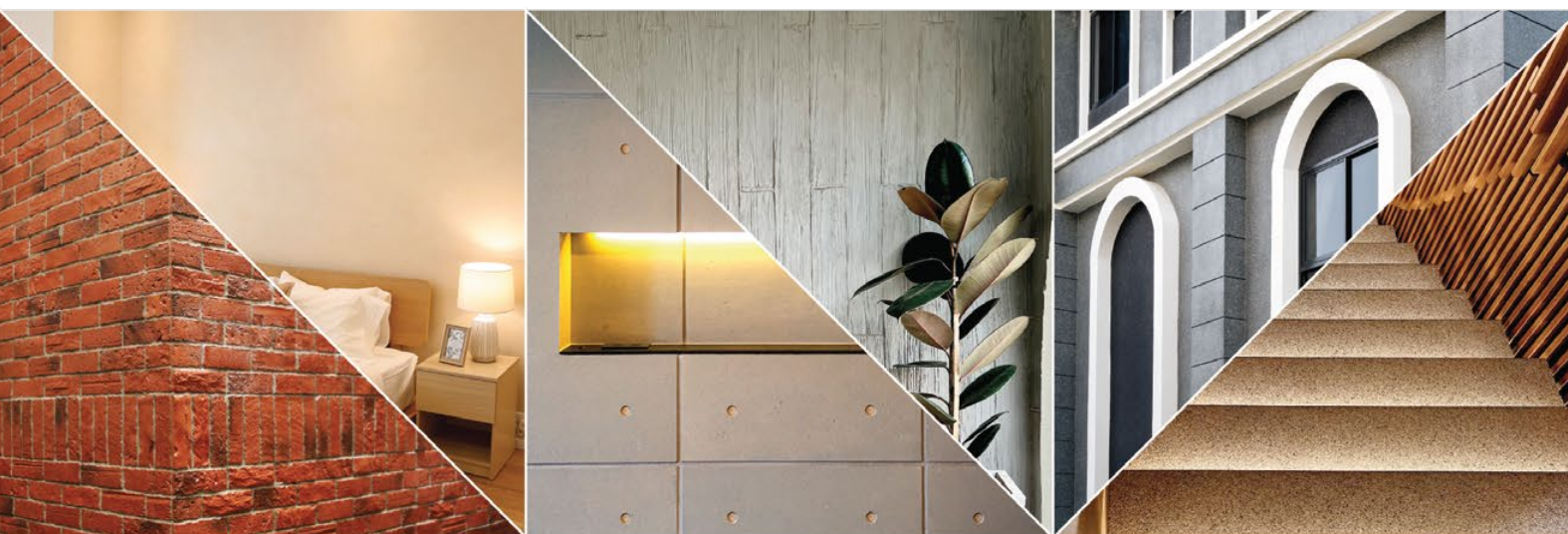
*Cnap
& Win!*
iPad Pro
Check out our contest!
suzuka.com.my/promotion | T&C Apply



SUZUKA® **GRANI** MULTICOLOR

EDITION
03

WALL FINISH PROFESSIONALS
TAIWAN • MALAYSIA • THAILAND



BRICK & STONE VENEER • TEXTURED PAINT • KASTPANEL • ECES • TEXTURE COATING • PEBBLE STONE COATING



suzuka.com.my

suzuka.group | **Hotline : +6012-258 7388**

* Photos of the products shown in this catalogue may vary in color due to lighting condition & printing. We suggest you examine actual product samples before ordering.



SGM-E3-2404

WALL FINISH
PROFESSIONALS.

SINCE
1977

**GRANITE
EFFECT COATING**

FOR THE EXTERIOR & INTERIOR

SUZUKA® GRANI MULTICOLOR

GRANITE EFFECT COATING

1 **SGC**
GRANILYTE
Page 3 – 8

2 **SGM**
GRANITTO
Page 9 – 22



SUZUKA®
**WALL
SEALER
PRO**

“ Make your
wall finishes
last longer! ”

Packing Size: **1L** **5L** **20L**

Superior primer for concrete, skimmed or masonry surfaces.

This sealer that has good substrate penetration abilities to increase adhesion of product to prevent chalking or peeling off.

It has excellent alkaline resistance properties that can prevent efflorescence. It is an ideal base coat for any SUZUKA® or any wall finish products.

Coverage	Drying Time (hour)	
6.5 - 8.5 m²/l/coat	Surface Dry : 1	Substrate Temperature: 23°C - 26°C
	Hard Dry : 5	
	Recoating : 5	

- Features:
- Excellent alkaline resistance to prevent efflorescence.
 - Good for new walls and repainting.
 - Prevents skim coat from chalking & peeling off.
 - Extremely good penetration.
 - Excellent adhesion.
 - Exterior and interior use.
 - Applicable with brush, roller or spray gun.

- Suitable for:
- Masonry wall
 - Brickwork
 - Plaster
 - Skimmed Coat
 - Asbestos free substrate

Airless Spray		
Nozzle 1.8 - 2.0 mm	Spray Angle Degree 65° - 80°	Pressure 210 psi/150kg/cm²

SUZUKA® Grani Multicolor vs. Real Granite

Factors	Suzuka Grani Multicolor (SGC & SGM)	Real Granite
Installation Time	Quick	Slow
Installation Ease	Simple	Difficult & requires extensive set-up
Installation Cost	Economical	Expensive
Material Cost	Economical	Expensive
Colour Control	Yes	No
Environmental-Friendliness	Non-invasive & water-based	Environmentally invasive
Safety	No risk	Risk of loosened stones falling
Customization	Yes	No
Maintenance	Economical and simple	Requires replacement & colour matching

Advantages

- One-time, multi-colour spray system
 - Colours and patterns can be customized
 - Resistant to stains, fungus, algae, acid and alkali
 - Washable and easy to maintain
- High adhesion and anti-peeling/flaking
 - Superb elasticity and is crack resistant
 - Water-based and eco-friendly
 - Excellent durability against weather conditions



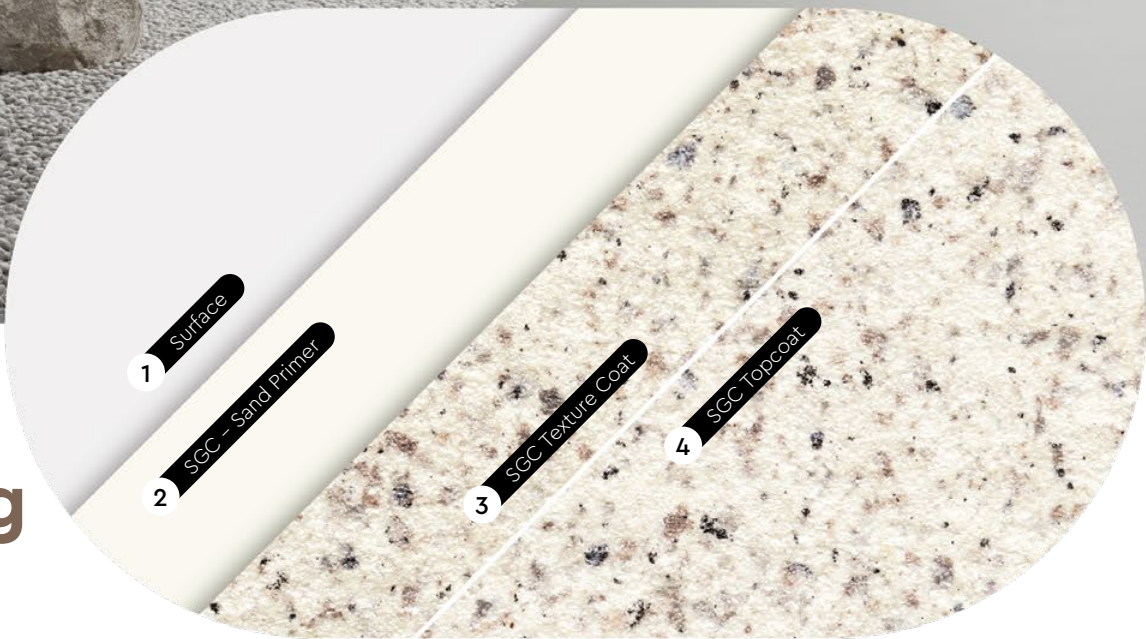
SUZUKA®
GRANILYTE
GRANITE EFFECT COATING



Introducing Granilite, crafted to bring the timeless elegance and durability of natural granite look to your walls with ease. The meticulously formulated coating replicates the intricate natural beauty of granite.



SGC
Coating
System



SGC Application Process

Process	Material (Dilution)	Number of Coats	Time Interval Between Process	Consumption (±15%)	Tools
1 Surface Preparation	Surface needs to be dry and free from dirt, oil, and foreign matter. Surface unevenness, including cracks, will need to be treated with cement filler.				
2 Primer	SGC - Sand Primer (Dilution: Max 3% with water)	1	4 hrs	7 - 9 m ² /l	Spray Gun, Roller or Brush
3 Texture Coat	SGC Texture Coat (Dilution: Ready to use)	1 - 2	24 hrs	0.9 - 1.3 kg/m ²	Spray Gun
4 Top Coat	SGC Topcoat Satin (Dilution: Max 2% with water)	1	-	8 - 9 m ² /l	Spray Gun, Roller or Brush



G Type



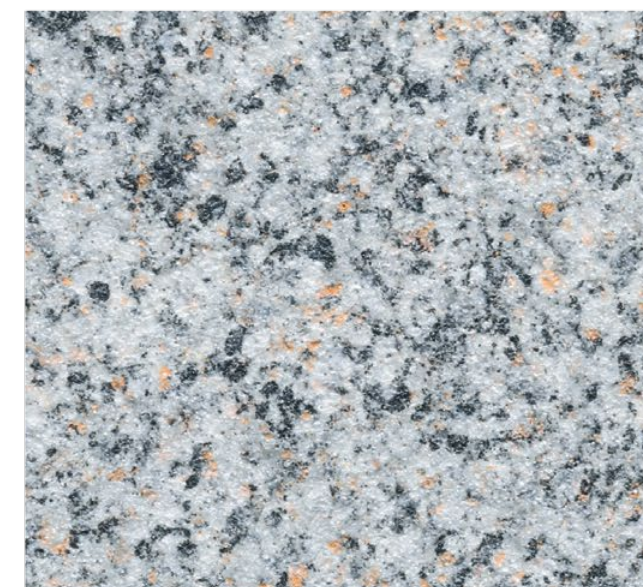
SGC-G-701



SGC-G-702



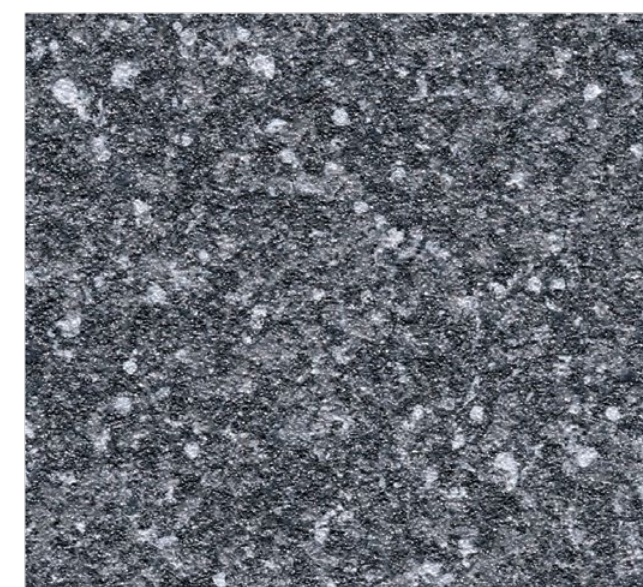
SGC-G-703



SGC-G-704



SGC-G-705



SGC-G-706

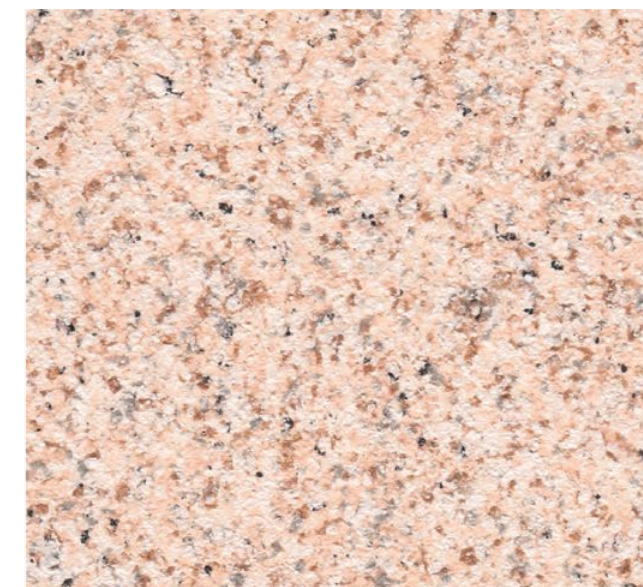


S

Type



SGC-S-501



SGC-S-502



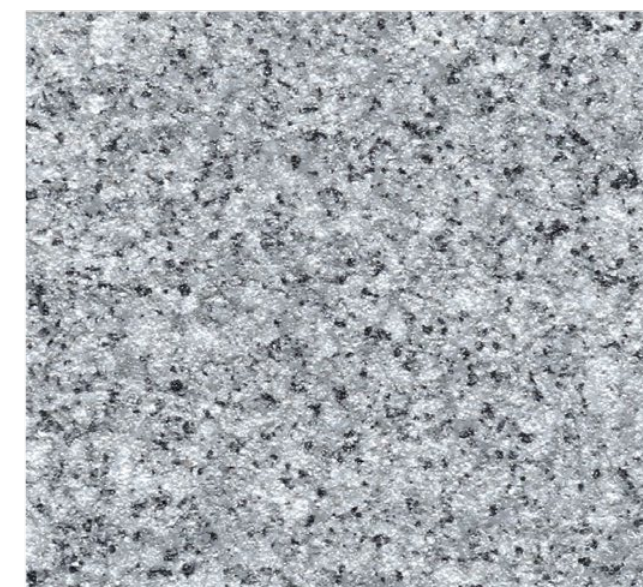
SGC-S-503



SGC-S-504



SGC-S-505



SGC-S-506



SUZUKA[®] GRANITTO

GRANITE EFFECT COATING

SGM uses high-performance and environmentally-friendly technology. Its water-based coating packages itself into individual capsules, allowing each to contain its own unique formula and colour.

This creates a one-time multi-colour spray system that is not only durable, but also effective in mirroring the authentic granite texture.



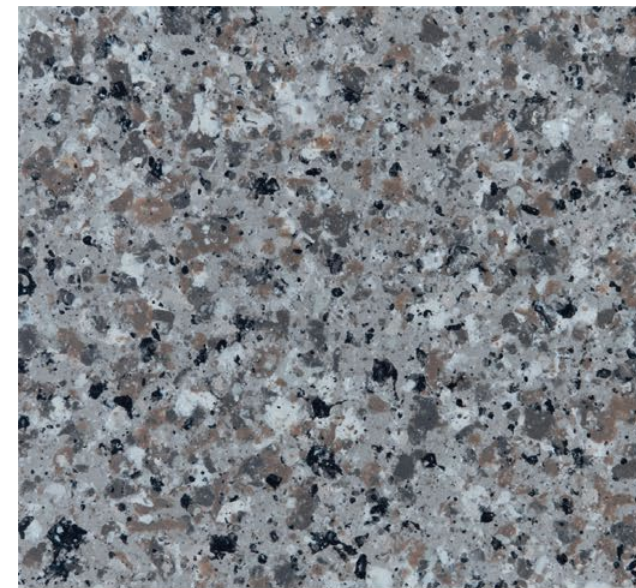
SGM Coating System



SGM Application Process

Process	Material (Mixing Weight Ratio)	Number of Coats	Time Interval Between Process	Consumption (±15%)	Tools
1 Surface Preparation	Surface needs to be dry and free from dirt, oil, and foreign matter. Surface unevenness, including cracks, will need to be treated with cement filler.				
2 Primer	EM Primer : Water 100 : 0 – 5	1	4 hrs	7 – 9 m ² /l	Spray Gun, Roller or Brush
3 Texture Coating	SGM Body Coat : Water 100 : 0 – 5	1	24 hrs	3 – 3.5 kg/m ²	Spray Gun
	SGM Base Color : Water 100 : 0 – 2	2	4 hrs	6 – 7 m ² /l	Spray Gun, Roller or Brush
	SGM Texture Coat	1 – 2	24 hrs	0.5 – 0.8 kg/m ²	Spray Gun
4 Top Coat	SGM Topcoat Satin: Water 100 : 0 – 2	1	-	8 – 9 m ² /l	Spray Gun, Roller or Brush

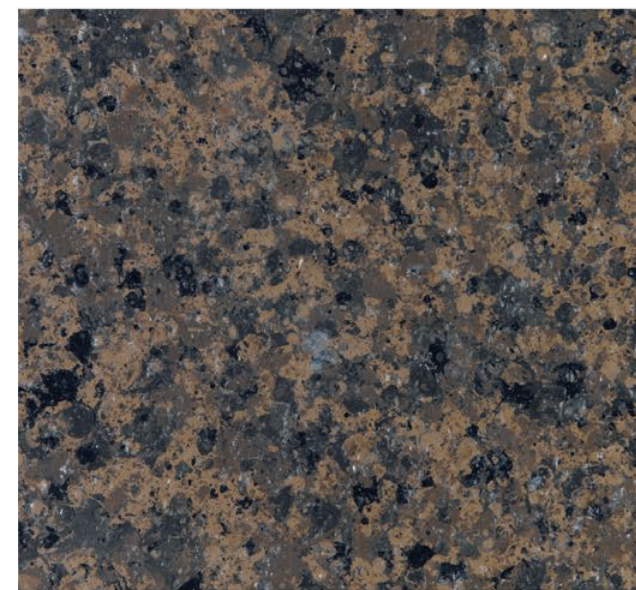
G Type



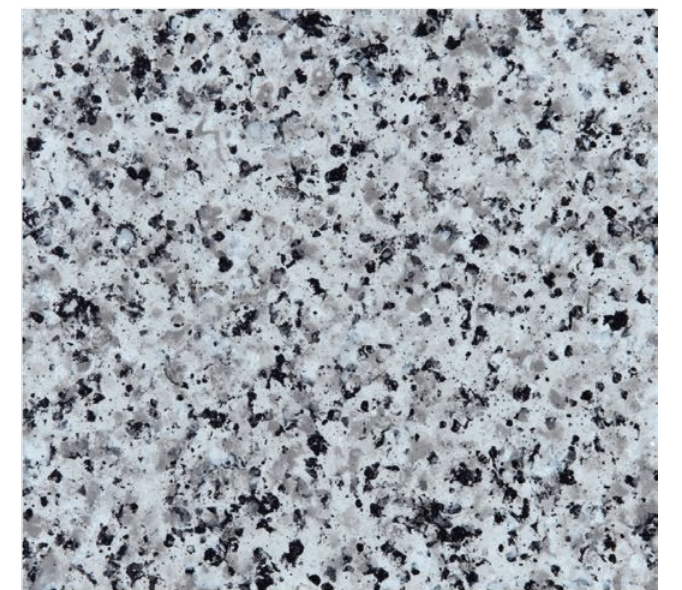
SGM-G-101



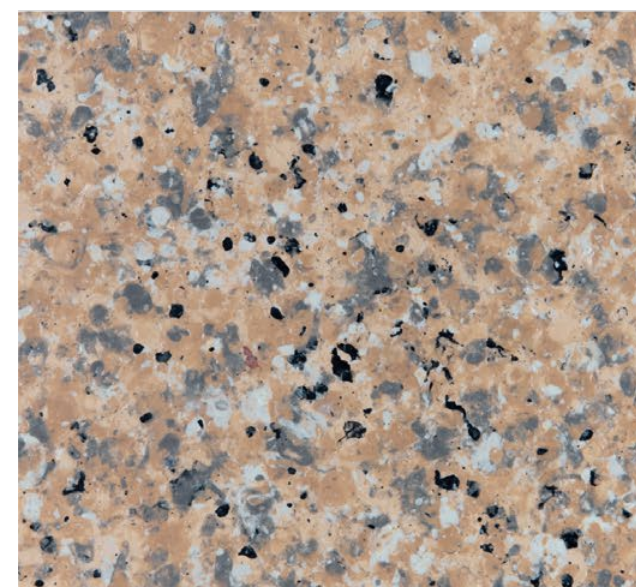
SGM-G-102



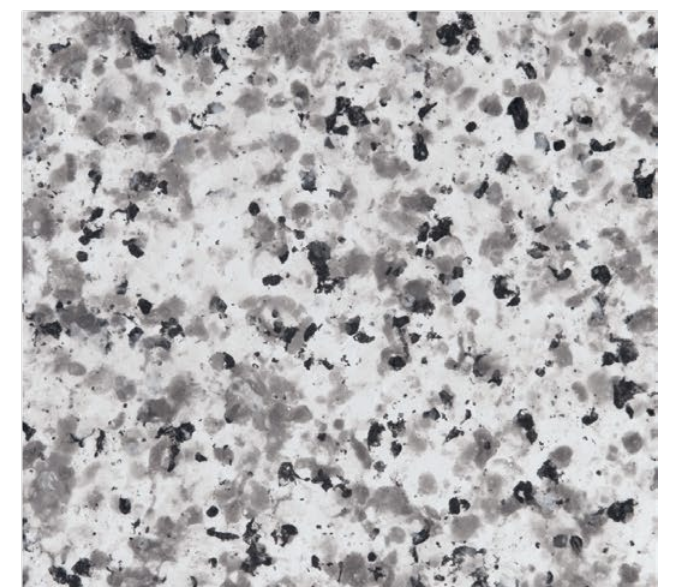
SGM-G-103



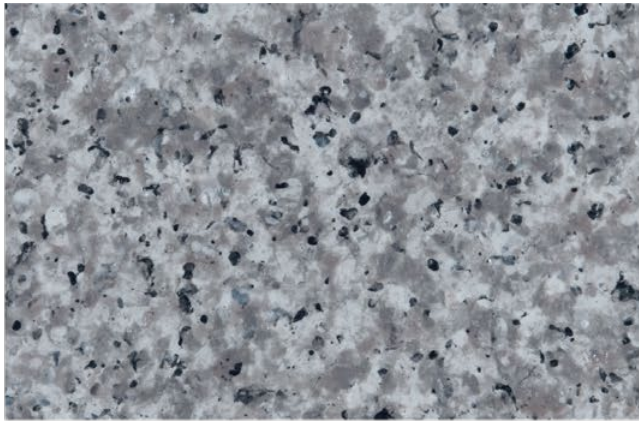
SGM-G-104



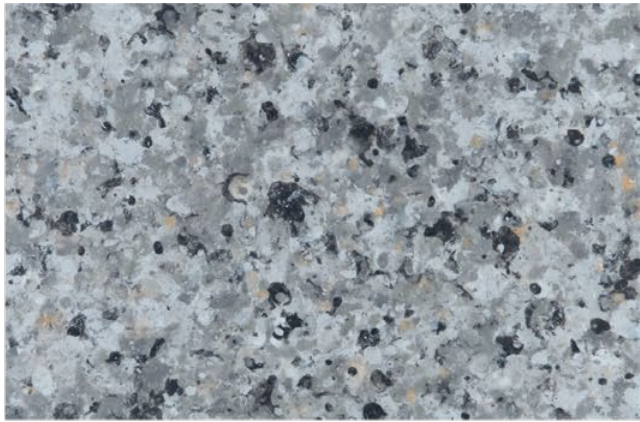
SGM-G-105



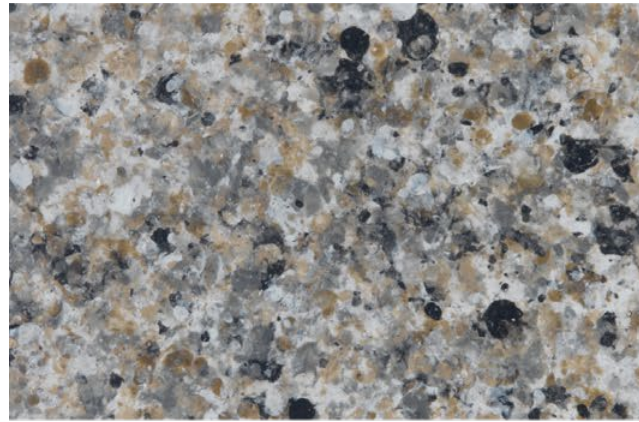
SGM-G-106



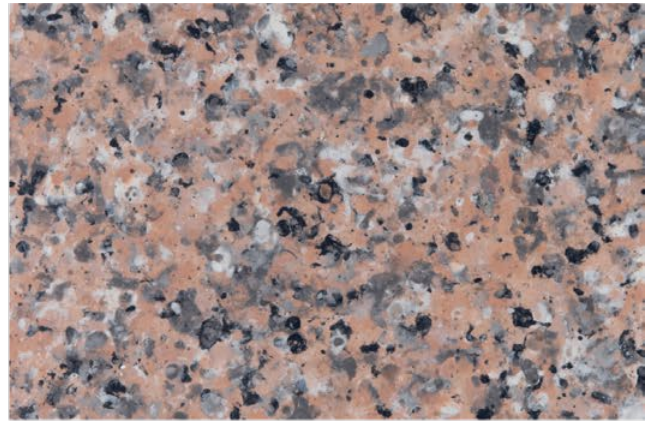
SGM-G-107



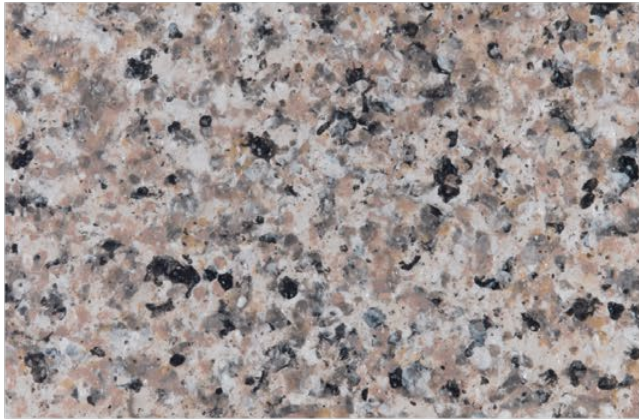
SGM-G-108



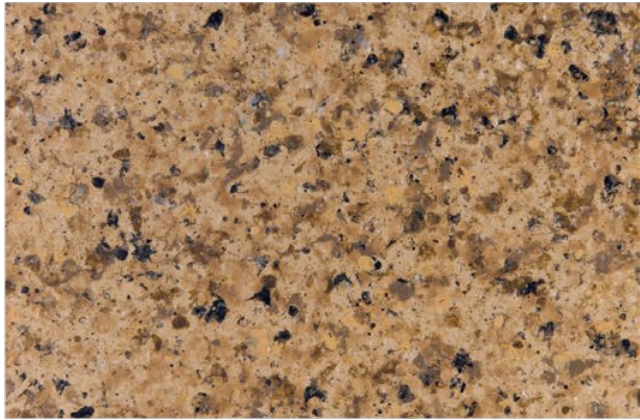
SGM-G-115



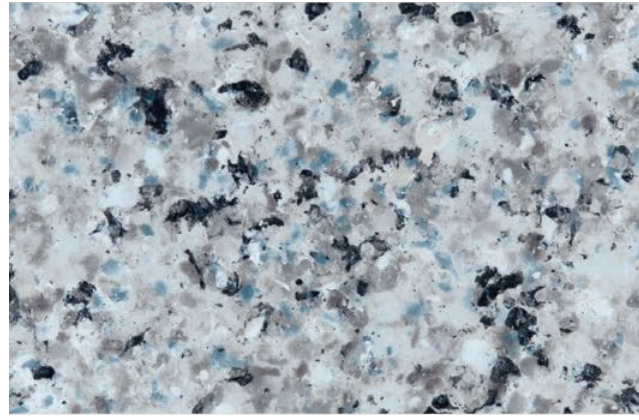
SGM-G-116



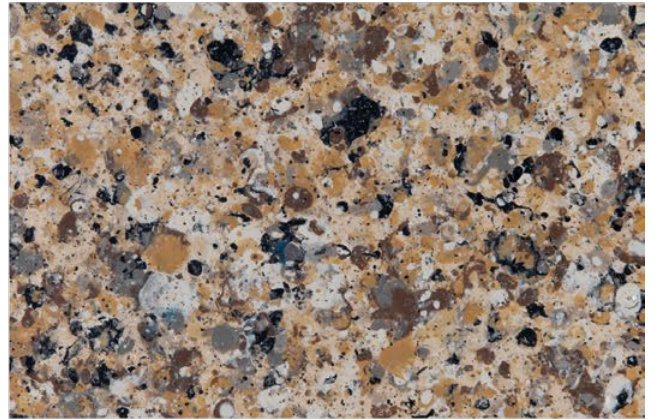
SGM-G-109



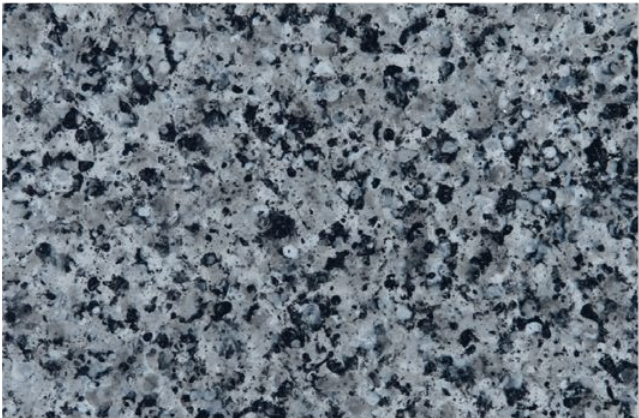
SGM-G-110



SGM-G-117



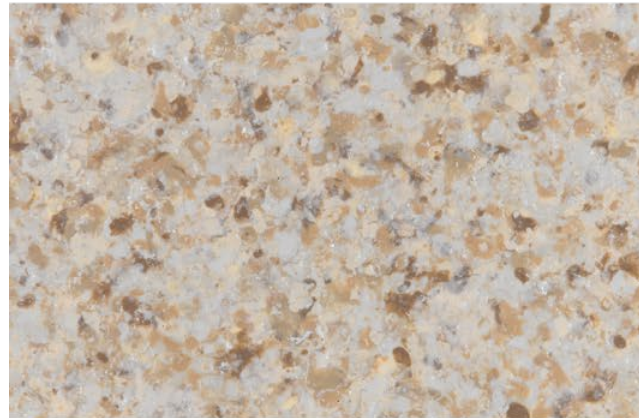
SGM-G-118



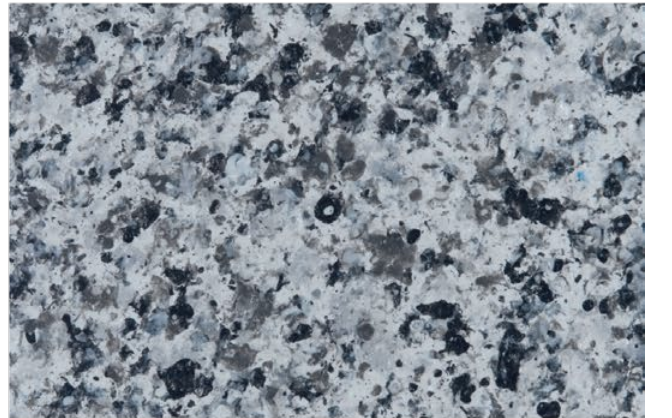
SGM-G-111



SGM-G-112



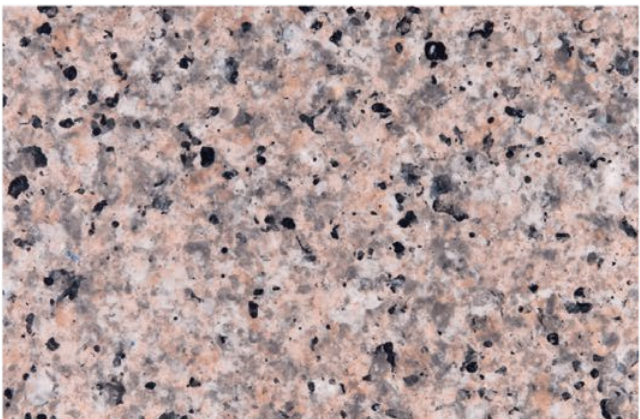
SGM-G-119



SGM-G-120



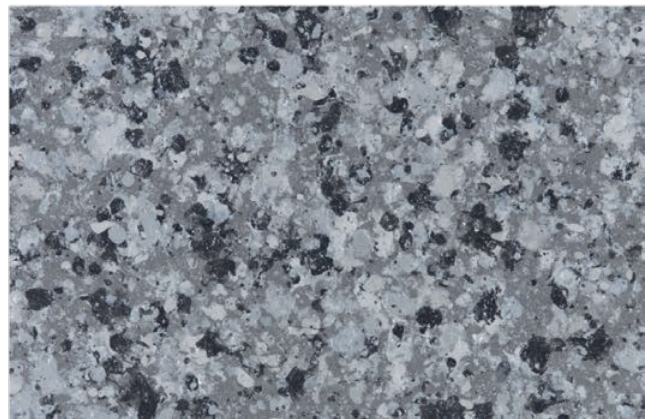
SGM-G-113



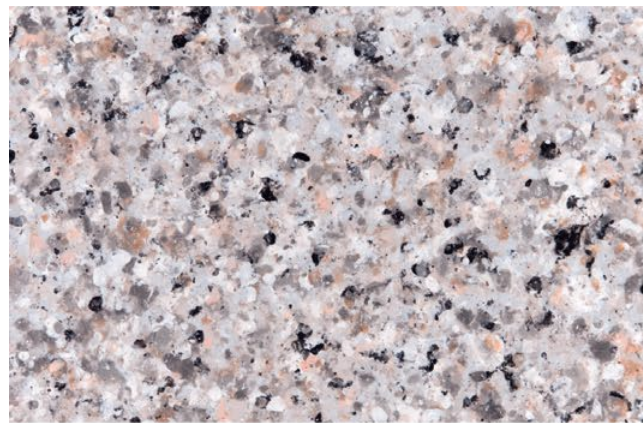
SGM-G-114



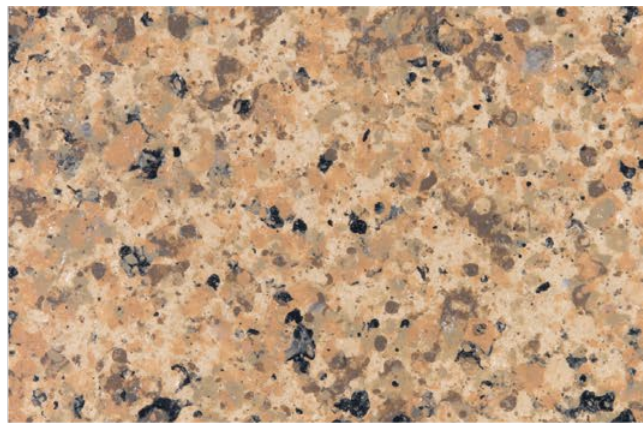
SGM-G-121



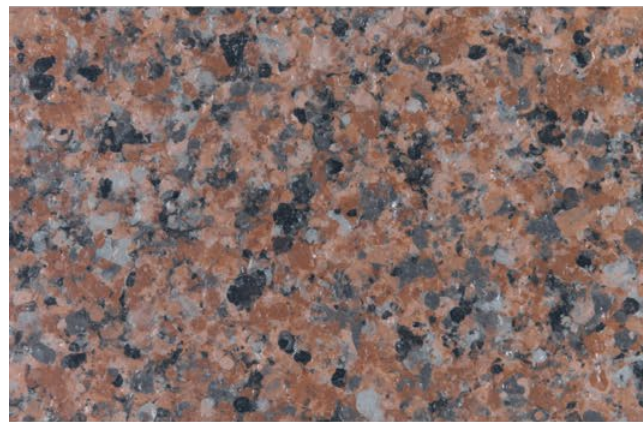
SGM-G-122



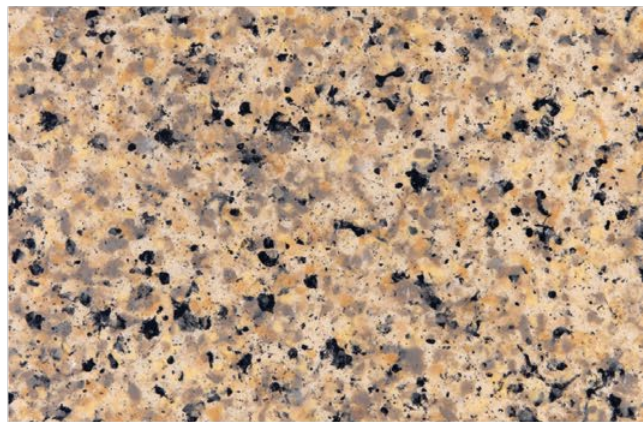
SGM-G-123



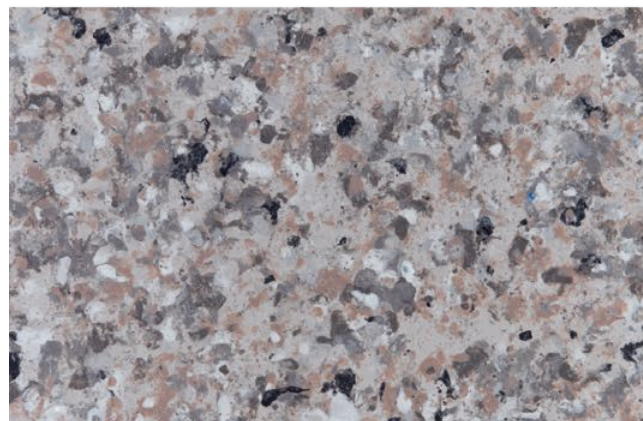
SGM-G-124



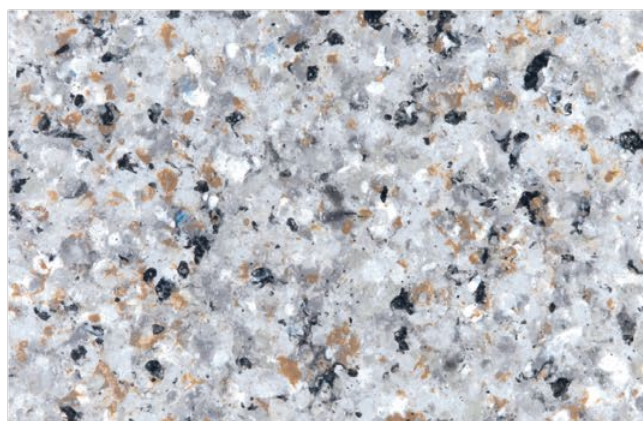
SGM-G-125



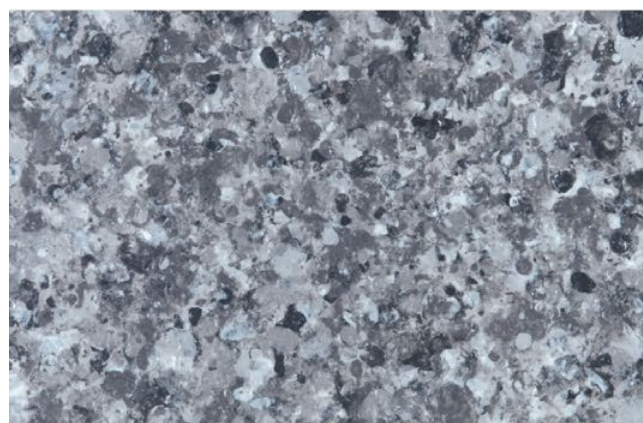
SGM-G-126



SGM-G-127



SGM-G-128

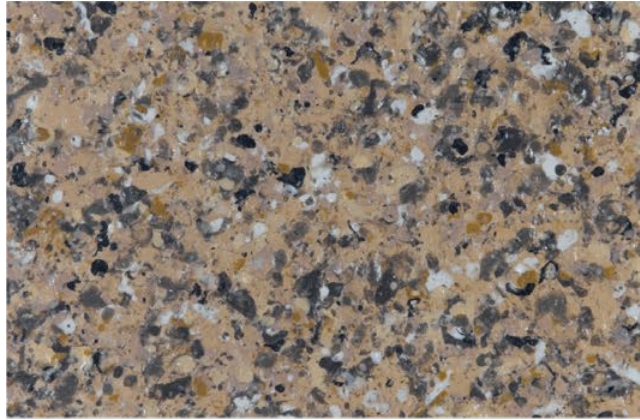


SGM-G-129

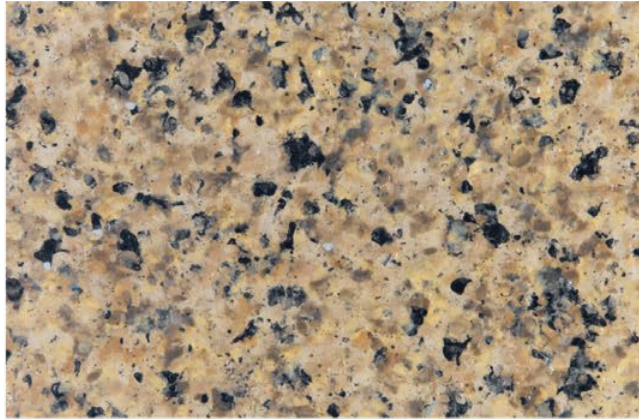


SGM-G-130

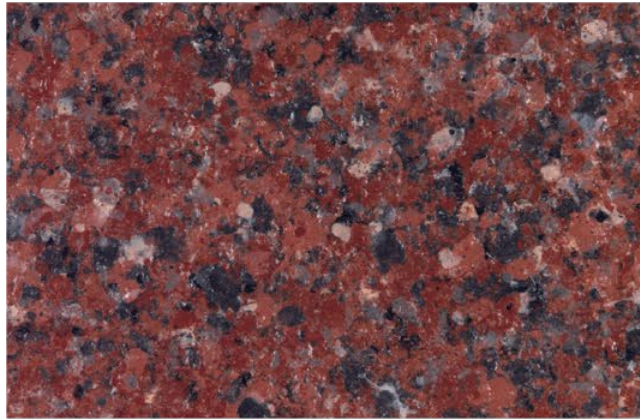




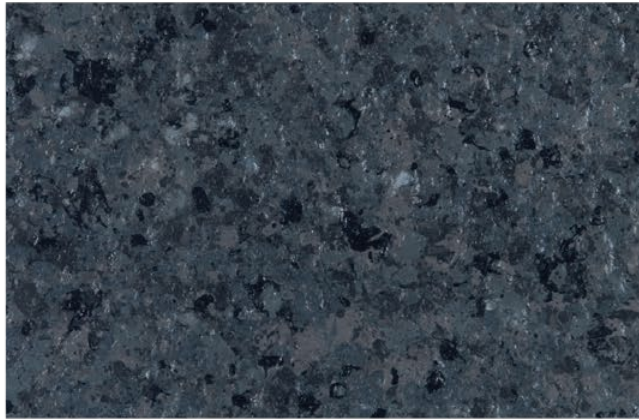
SGM-G-131



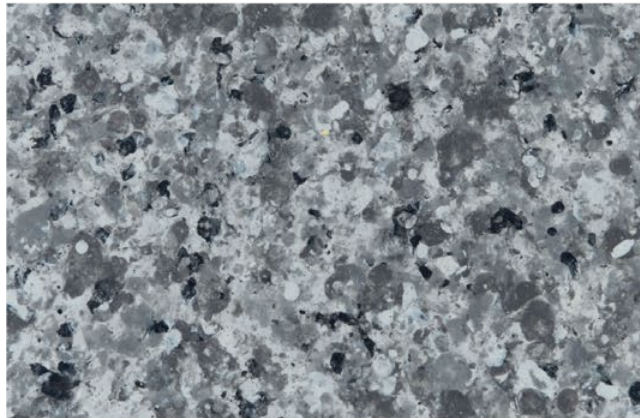
SGM-G-132



SGM-G-133



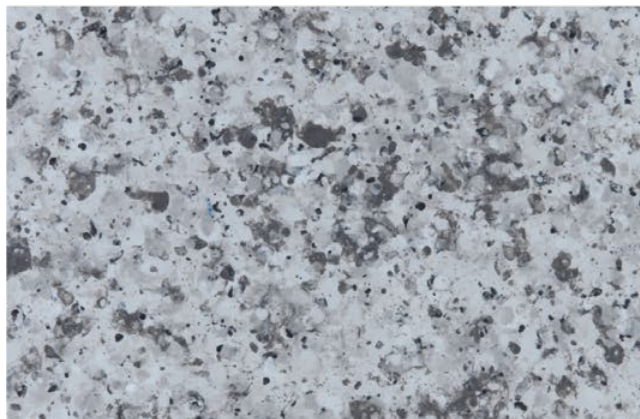
SGM-G-134



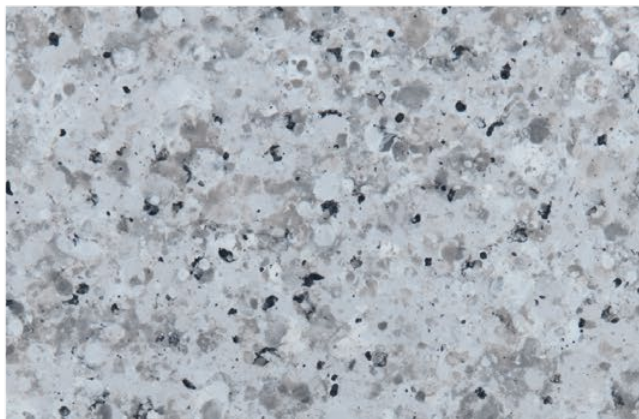
SGM-G-135



SGM-G-136



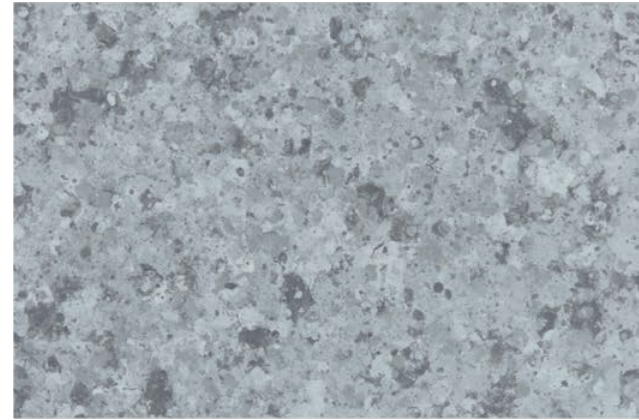
SGM-G-137



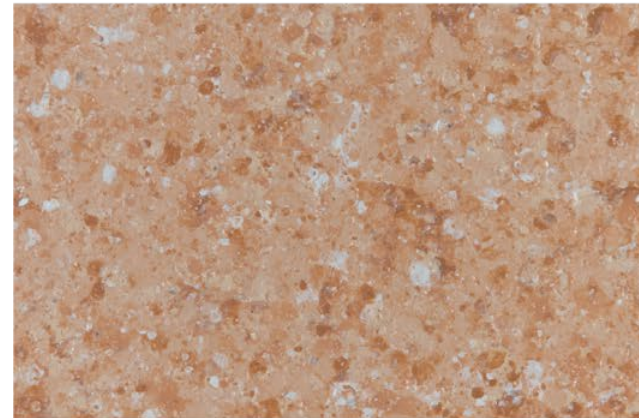
SGM-G-138



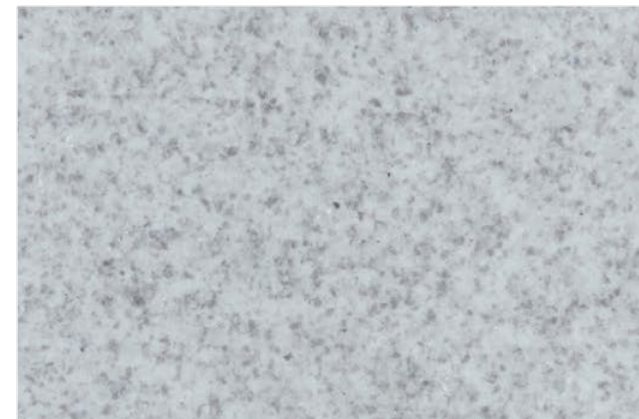
SGM-G-139



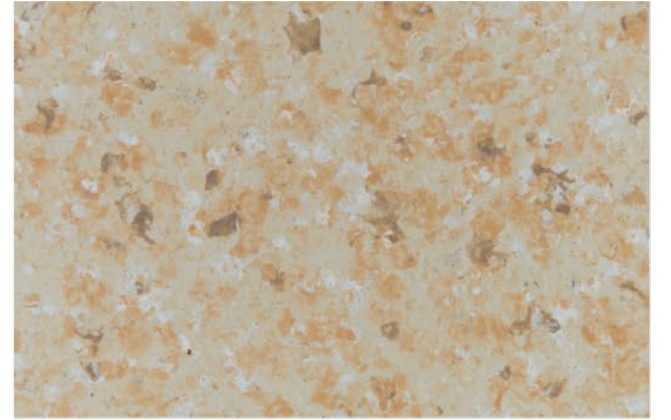
SGM-G-141



SGM-G-143



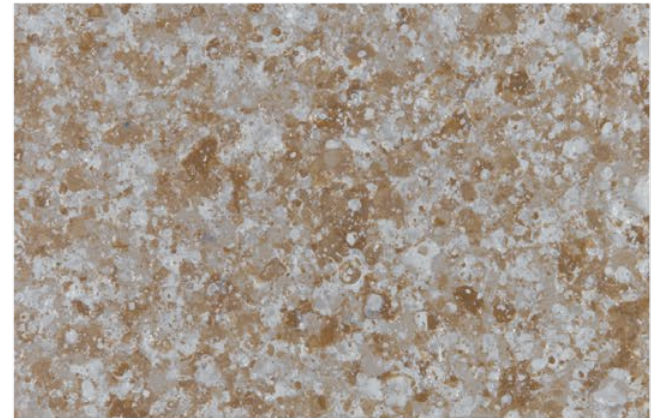
SGM-G-145



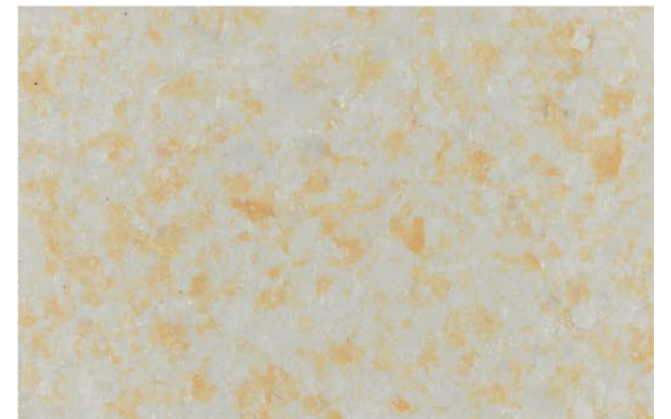
SGM-G-140



SGM-G-142



SGM-G-144



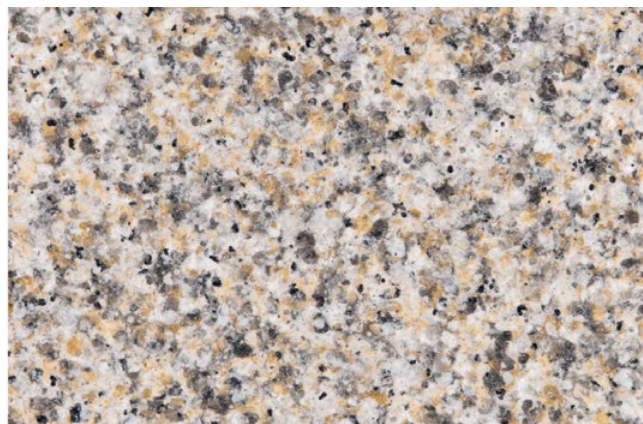
SGM-G-146



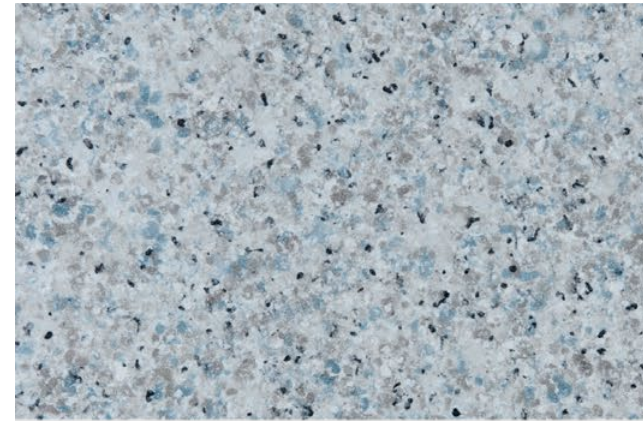
S Type



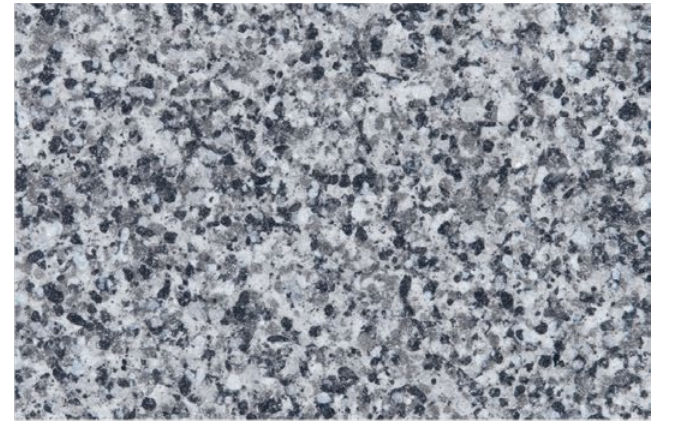
SGM-S-301



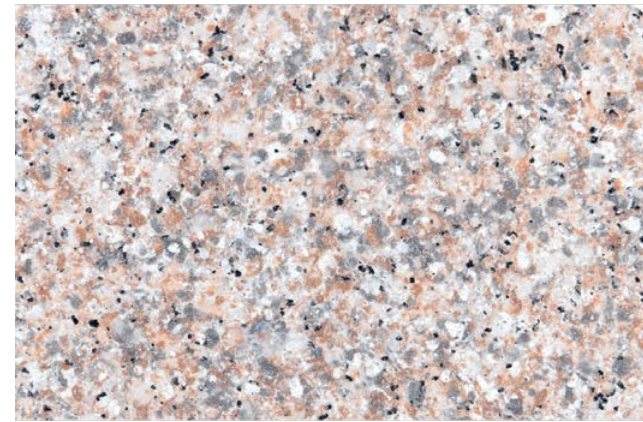
SGM-S-302



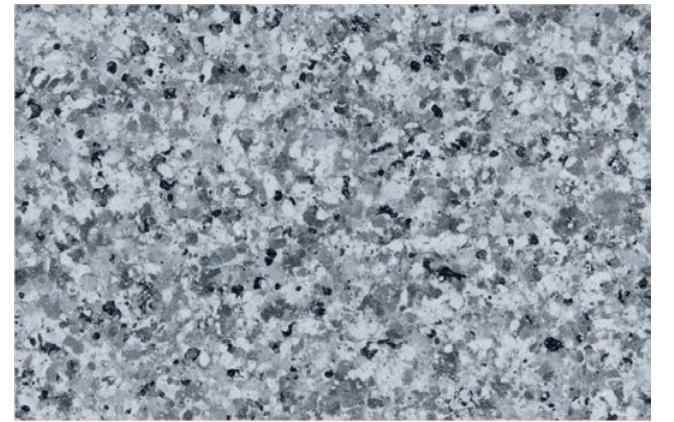
SGM-S-303



SGM-S-304



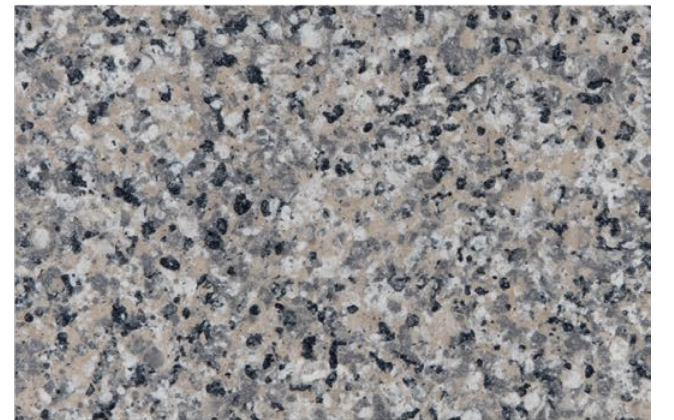
SGM-S-305



SGM-S-306



SGM-S-307



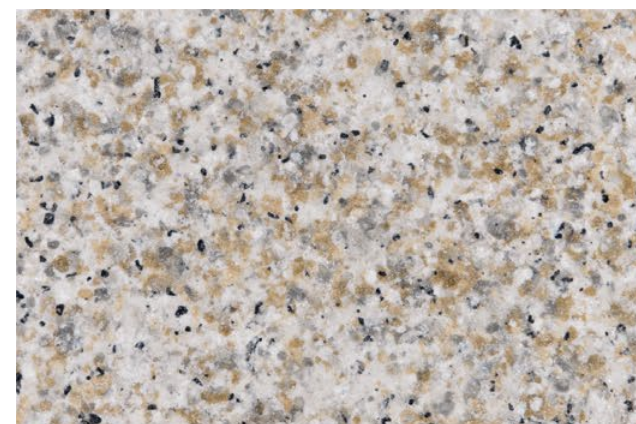
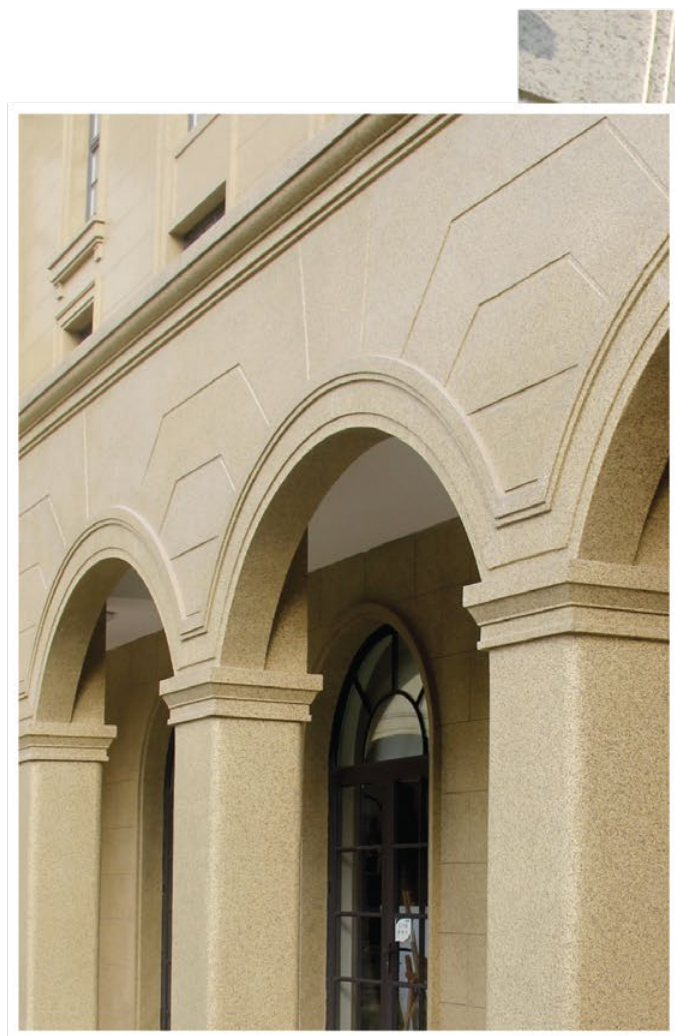
SGM-S-308



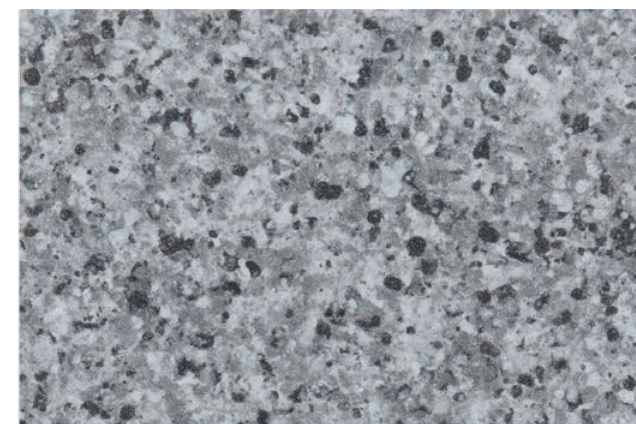
SGM-S-309



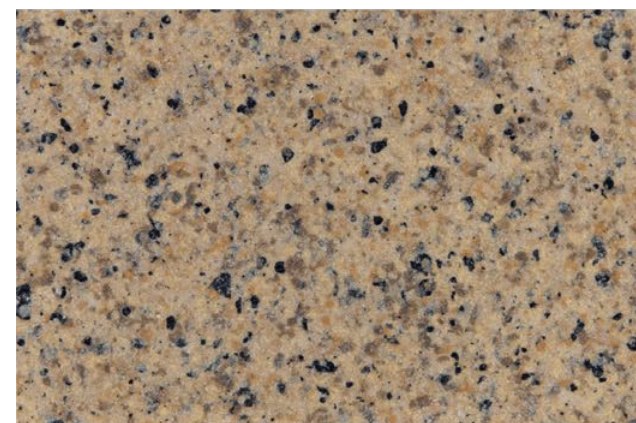
SGM-S-310



SGM-S-311



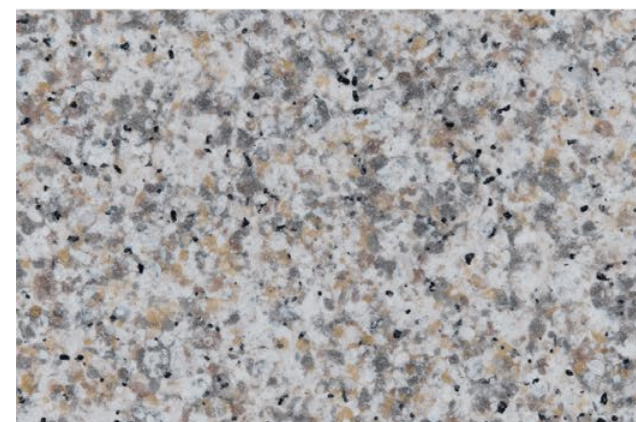
SGM-S-312



SGM-S-313



SGM-S-314



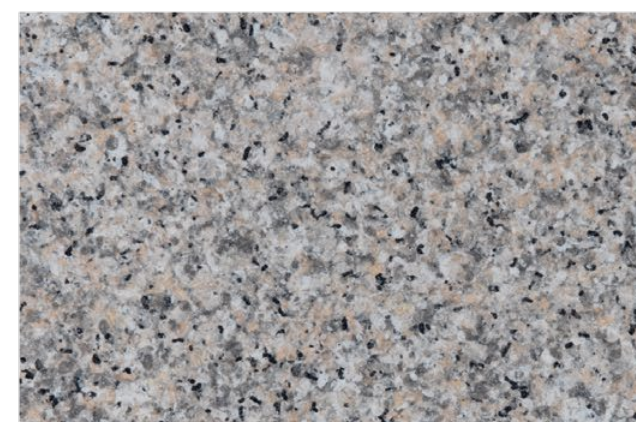
SGM-S-315



SGM-S-316



SGM-S-317



SGM-S-318