

Cnap & Win!
iPad Pro
 Check out our contest!
suzuka.com.my/promotion | T&C Apply



STRATO®

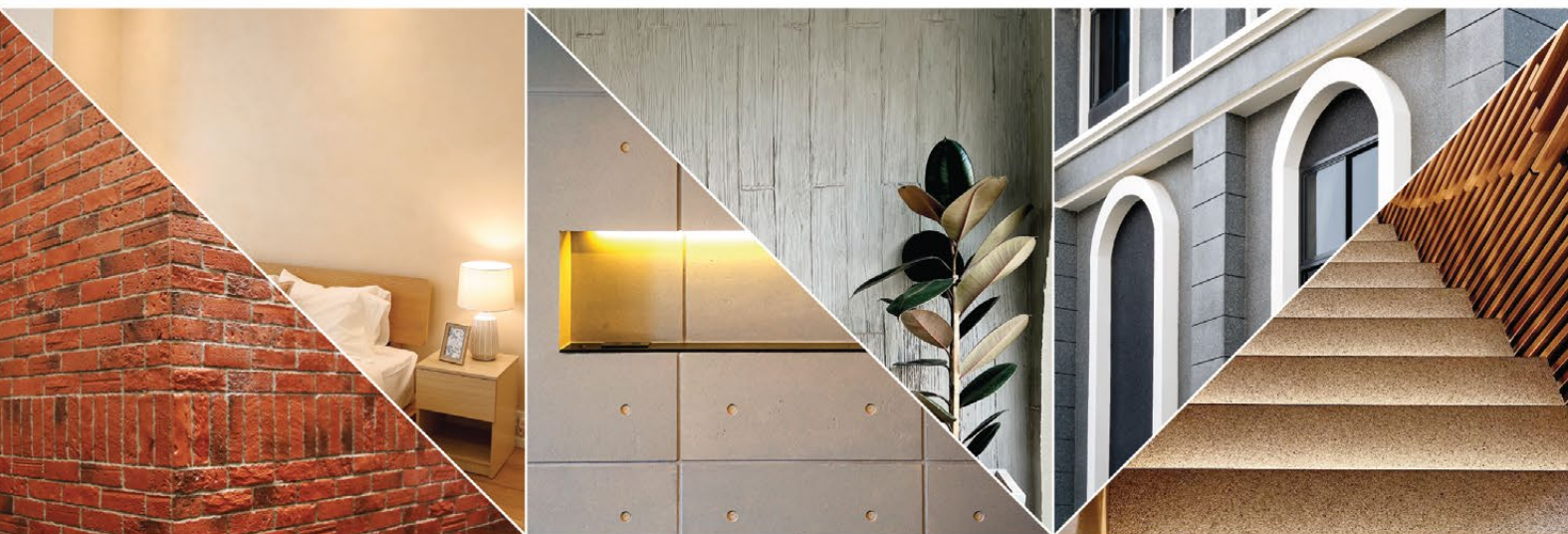
*Cashmere
& Taffeta*

INTERIOR
TEXTURED PAINTS

EDITION
01

WALL FINISH PROFESSIONALS

TAIWAN • MALAYSIA • THAILAND



BRICK & STONE VENEER • TEXTURED PAINT • KASTPANEL • ECES • TEXTURE COATING • PEBBLE STONE COATING



suzuka.com.my

suzuka.group | **Hotline : +6012-258 7388**

* Photos of the products shown in this catalogue may vary in color due to lighting condition & printing. We suggest you examine actual product samples before ordering.



CASHMERE & TAFFETA-E1-2311

WALL FINISH
PROFESSIONALS.

SINCE
1977



SUZUKA®

WALL SEALER PRO

“ Make your wall finishes last longer! ”

Packing Size:

1L

5L

20L

Superior primer for concrete, skimmed or masonry surfaces.

This sealer that has good substrate penetration abilities to increase adhesion of product to prevent chalking or peeling off.

It has excellent alkaline resistance properties that can prevent efflorescence. It is an ideal base coat for any SUZUKA® or any wall finish products.

Coverage	Drying Time (hour)	
6.5 - 8.5 m ² /l/coat	Surface Dry : 1	Substrate Temperature:
	Hard Dry : 5	
	Recoating : 5	23°C - 26°C

- Features:
- Excellent alkaline resistance to prevent efflorescence.
 - Good for new walls and repainting.
 - Prevents skim coat from chalking & peeling off.
 - Extremely good penetration.
 - Excellent adhesion.
 - Exterior and interior use.
 - Applicable with brush, roller or spray gun.
- Suitable for:
- Masonry wall
 - Brickwork
 - Plaster
 - Skimmed Coat
 - Asbestos free substrate

Airless Spray		
Nozzle	Spray Angle Degree	Pressure
1.8 - 2.0 mm	65° - 80°	210 psi/150kg/cm ²



Strato® Cashmere embodies the pinnacle of elegance in textured coating. Achieved through smooth layering and delicate craftsmanship, the finished product gives a refined and royal appearance with a lingering hint of sophistication.

Features

- Low VOC & Odor
- Formaldehyde & Lead Free
- Green Choice, Water Based & Eco-friendly
- Easy, Quick Application & DIY Friendly
- Easy Maintenance

• INTERIOR USE ONLY



SCH-003

SILVER
SLATE



SCH-016

STARDUST
SILVER

Interior Design by
METRICS
GLOBAL



SCH-008

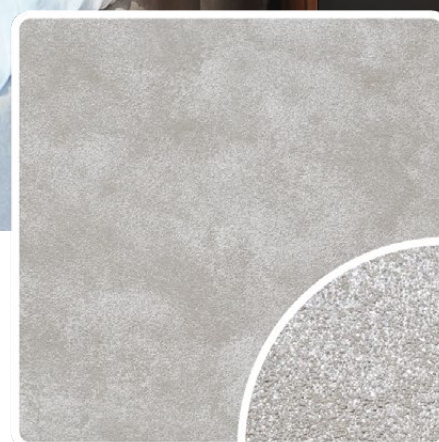
EGGSHELL
BEIGE



Pearl White | **SCH-001**



Silver Mist | **SCH-002**



Silver Slate | **SCH-003**



Platinum Metal | **SCH-004**



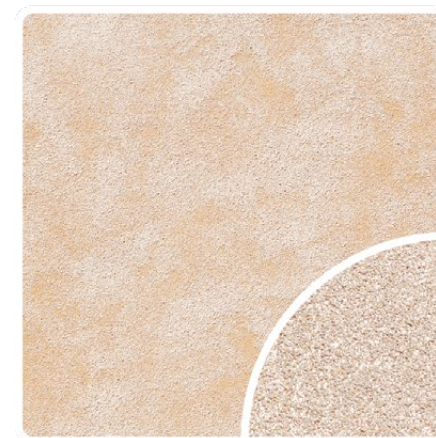
Bronze Age | **SCH-005**



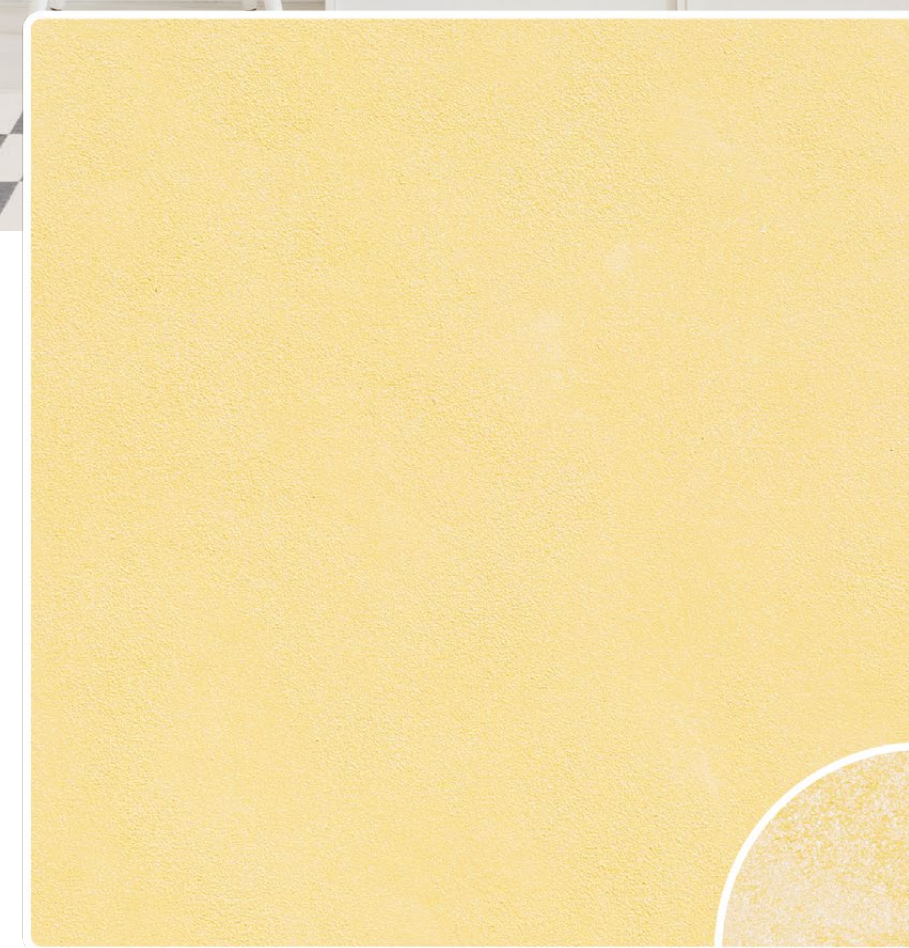
Sand Castle Beige | **SCH-006**



Autumn Beige | **SCH-007**



Eggshell Beige | **SCH-008**



Desert Gold | **SCH-009**

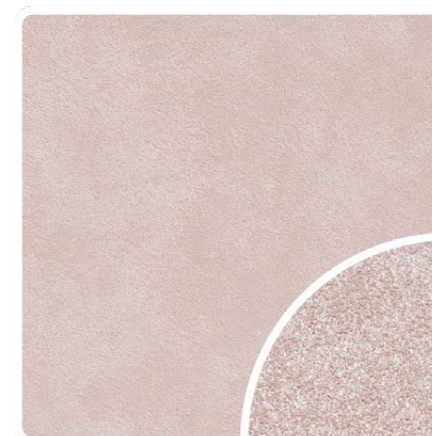


SCH-015

POWDER
BLUE



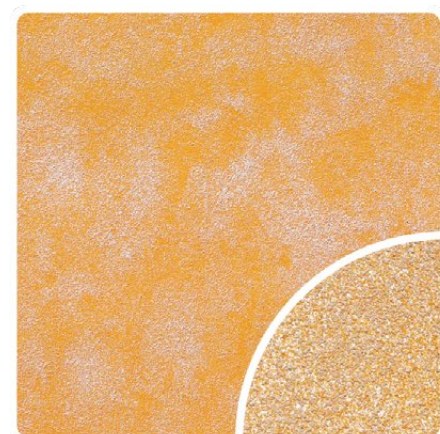
Baby Doll Pink | **SCH-013**



Coral Blush | **SCH-014**



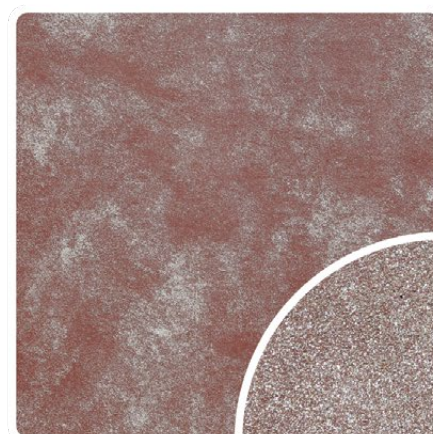
Powder Blue | **SCH-015**



Honey Yellow | **SCH-010**



Peach Blossom | **SCH-011**



Plum Sunset | **SCH-012**



SCH-014

CORAL
BLUSH



SCH-019

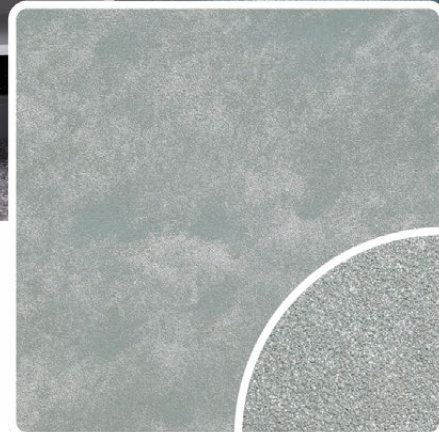
PEACOCK
BLUE



Stardust Silver | **SCH-016**



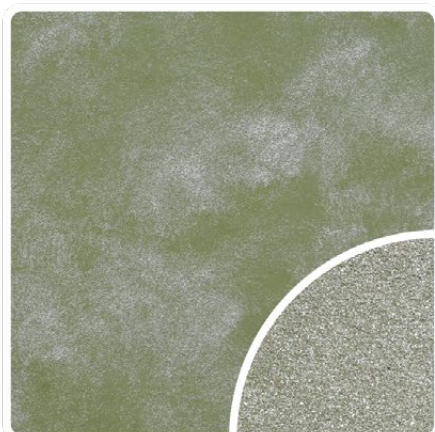
Lace Blue | **SCH-017**



Ash Grey | **SCH-018**



Peacock Blue | **SCH-019**



Olive Tree | **SCH-020**



Tropical Green | **SCH-021**

APPLICATION TECHNIQUE

Preparation:

- Cover the edges of surface that won't be painted by masking it with tape, paper or plastic.
- Clean up the wall surface to ensure it is free from dirt and dust.



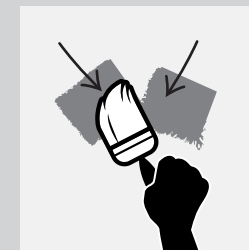
APPLICATION VIDEO



1 PRIMER

Roll 2 layers of primer on the entire surface.
Allow 30 minutes to dry between the layers.
(The primer can be diluted with maximum 5% of clean water)

Tool: Roller



2 TEXTURE COAT

Brush on texture coat in criss cross patterns. Apply 1-2 layers. Ensure the whole surface area is covered.

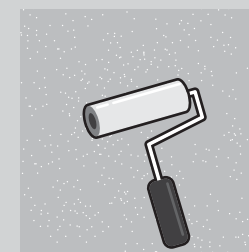
Tool: Brush



3 FLATTENING

Flatten the entire surface in circular motion to enhance the pattern.

Tool: Plastic Scrapper

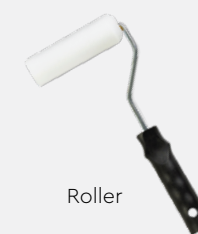


4 TOPCOAT

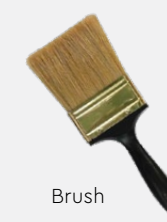
Evenly roll SR-Top 3 on entire surface. Allow to dry for 1 hour.

Tool: Roller

Tools:



Roller



Brush



Plastic Scrapper



PACKING DATA

1 L	Primer	Coverage (per set)	
1 L	Texture Coat	WALL	6 - 7 sqm
1 L	Topcoat (SR-Top 3)	CEILING	5 - 6 sqm

STRATO® Taffeta



Smooth &
Shimmering
FINISHING

A vibrant color layered in texture and dusted with a shimmering pearl effect crafts a bold and radiant feel onto the wall.

Features

Low VOC & Odor



Formaldehyde & Lead Free



Green Choice, Water Based & Eco-friendly



Easy, Quick Application & DIY Friendly



Easy Maintenance



• INTERIOR ONLY

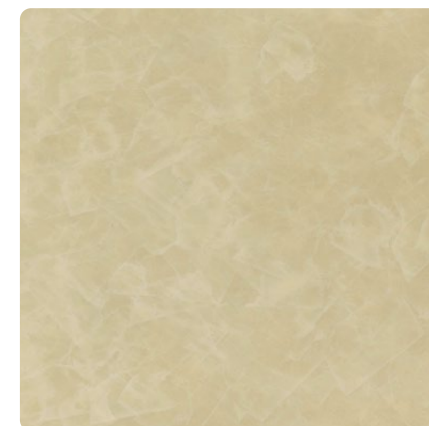


SRT-219

OYSTER
BEIGE



Light Sapphire | **SRT-214**



Oyster Beige | **SRT-219**



Blue Waves | **SRT-225**



Pewter Grey | **SRT-201**



Light Steel Blue | **SRT-203**



Light Sepia | **SRT-209**



SRT-201

PEWTER
GREY



SRT-214

LIGHT
SAPPHIRE



SRT-232
PALE
LAVENDER



Malted Mocha | **SRT-231**



Pale Lavender | **SRT-232**



Ocean Surface | **SRT-233**

APPLICATION TECHNIQUE

Preparation: - Cover the edges of surface that won't be painted by masking it with tape, paper or plastic.
- Clean up the wall surface to ensure it is free from dirt and dust.



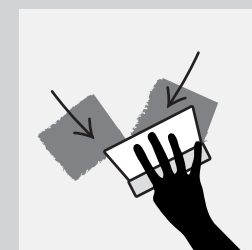
APPLICATION VIDEO



1 PRIMER

Roll 2 layers of primer on the entire surface.
Allow 30 minutes to dry between the layers.
(The primer can be diluted with maximum 5% of clean water)

Tool: Roller



3 TEXTURE COAT

Scrape texture coat in a random criss cross pattern. 2-3 layers. Every layer requires 30 minutes to dry.

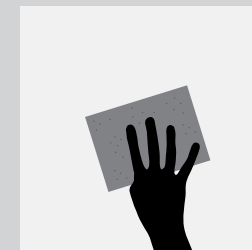
Tool: Steel Scrapper



5 TOPCOAT

Scrape on topcoat SR-Top 2 in a random criss cross overlapping patterns. Allow 1 hour to dry.

Tool: Steel Scrapper



2 SANDING (OPTIONAL)

Sand the entire surface in circular motion to ensure the surface is smooth.

Tool: 600 Grit Sand Paper



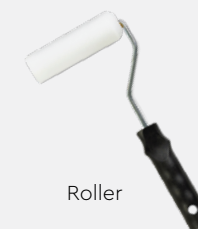
4 SANDING

Sand the entire surface in circular motion to enhance the pattern.

Tool: 600 Grit Sand Paper

✧✧ Taffeta has a **shimmering** pearl effect topcoat.
✧ For a **matte** finishing, please request **SR-Top 1**.

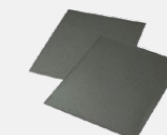
Tools:



Roller



Steel Scrapper



Sand Paper (600 Grit)

PACKING DATA

1 L	Primer
1 L	Texture Coat
0.5 L	Topcoat (SR-Top 2)

Coverage (per set)

WALL	4.5 sqm
CEILING	3.5 sqm

