

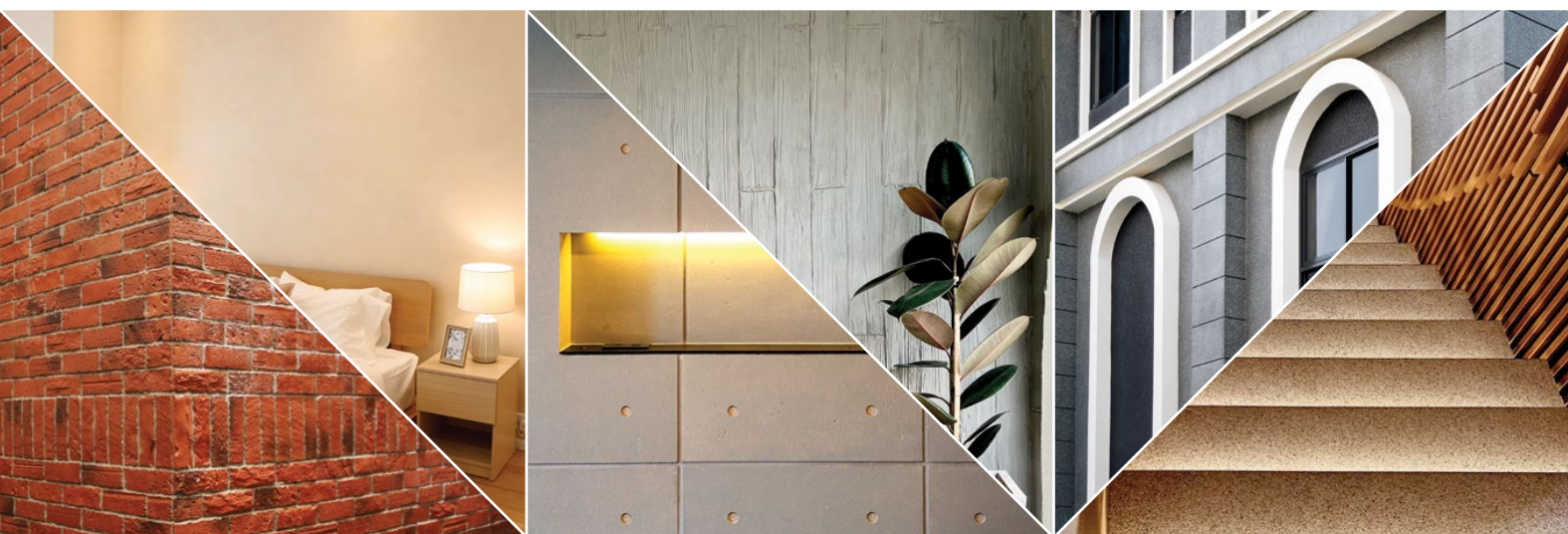
*Cnap & Win!*  
**iPad Pro**  
 Check out our contest!  
[suzuka.com.my/promotion](http://suzuka.com.my/promotion) | T&C Apply



# ARCHISTRA

EDITION  
**01**

**WALL FINISH PROFESSIONALS**  
 TAIWAN • MALAYSIA • THAILAND



BRICK & STONE VENEER • TEXTURED PAINT • KASTPANEL • ECES • TEXTURE COATING • PEBBLE STONE COATING



**suzuka.com.my**

**suzuka.group** | Hotline : +6012-258 7388

\* Photos of the products shown in this catalogue may vary in color due to lighting condition & printing. We suggest you examine actual product samples before ordering.



ARCHISTRA-E1-2312

**WALL FINISH  
 PROFESSIONALS.**

**SINCE  
 1977**





# ARCHISTRA



## Features



Ultra  
Lightweight



Suitable for the  
Interior & Exterior  
(To be used under the roof)



Water  
Resistant



Easy Installation  
& DIY Friendly



Anti-mould



Paintable



Anti-termite



Can Be Paired with  
other Suzuka Coatings



Finished with  
Green Coating



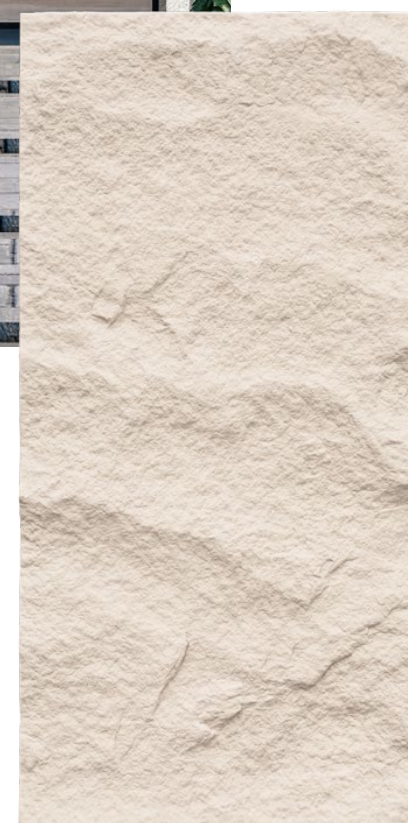
Made in  
Malaysia

## Redefine your walls with the Archistra wall panel collection.

Transform your space with our exquisite Archistra wall panel collection. Crafted using polyurethane, with precision and artistic flair, these panels redefine design, seamlessly blending artistry & architecture.

Choose from a diverse range of patterns, textures, and colors to suit your aesthetic preferences. Whether you seek a contemporary focal point or a timeless elegance, Archistra offers a versatile solution.

Ultra lightweight, hassle free installation and maintenance, these panels effortlessly adds a touch of sophistication and personality to your living spaces.



ACH-10 SERIES



ACH-20 SERIES



ACH-40 SERIES



# ACH-10

series

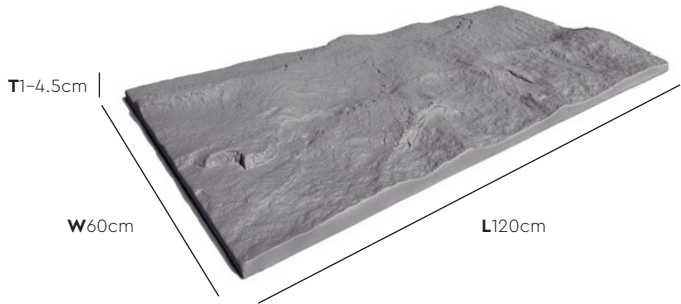


Coverage (Per box) | Pieces (Per box)  
**2.88 sqm** | **4 pcs**

Max. Weight (ACH-1001 – 1006)  
**2.2 kg** (Per Piece) | **11.5 kg** (Per box)

Max. Weight (ACH-1051)  
**3.3 kg** (Per Piece) | **13.3 kg** (Per box)

\* Please allow a  $\pm$  5% tolerance for product size, weight and colour.

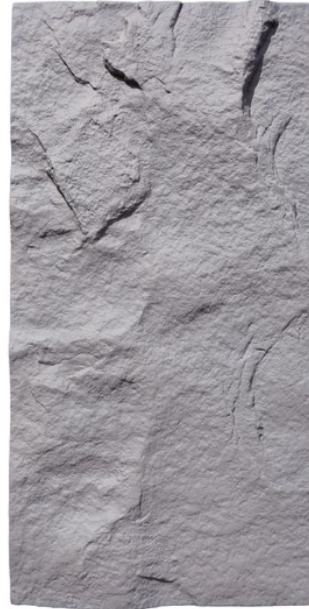


ACH-1004 | Stacks





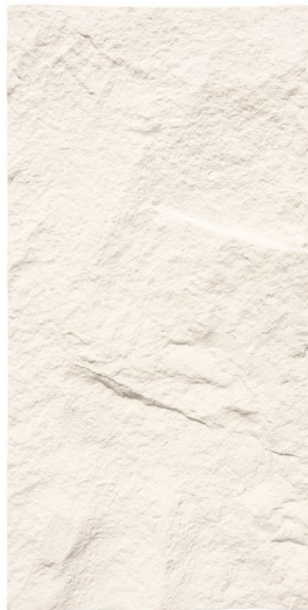
ACH-1001



ACH-1002



ACH-1003



ACH-1004



ACH-1005



ACH-1006



ACH-1051

All color shown are as close to the actual Suzuka® Archistra colors as modern printing techniques permit, nonetheless, there are still color/tone differences.

**We highly recommend seeing actual samples before ordering.**



ACH-1003 | Running Bond



ACH-1002 | Random







# ACH-20

series

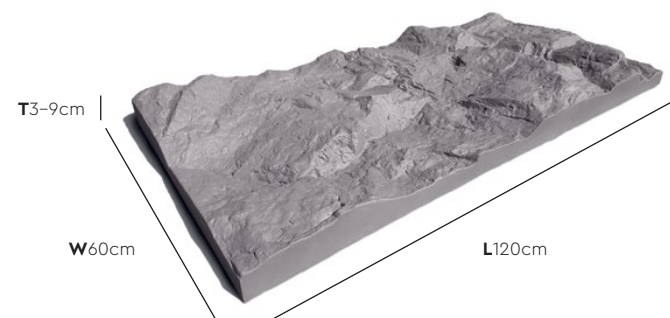


Coverage (Per box) | Pieces (Per box)  
**2.16 sqm** | **3 pcs**

Max. Weight (ACH-2001 – 2006)  
**2.8 kg** (Per Piece) | **11.5 kg** (Per box)

Max. Weight (ACH-2051)  
**3.9 kg** (Per Piece) | **11.8 kg** (Per box)

\* Please allow a  $\pm$  5% tolerance for product size, weight and colour.



ACH-2006 | Stacks





ACH-2001



ACH-2002



ACH-2003



ACH-2004



ACH-2005



ACH-2006



ACH-2051

All color shown are as close to the actual Suzuka® Archistra colors as modern printing techniques permit, nonetheless, there are still color/tone differences.

**We highly recommend seeing actual samples before ordering.**



ACH-2005 | Running Bond



ACH-2001 | Random





ACH-2004 | Running Bond

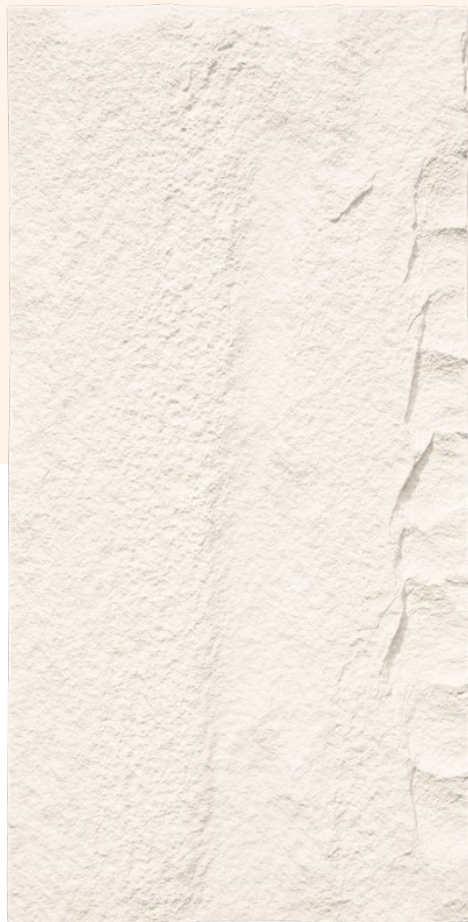


ACH-2003 | Random



# ACH-40

series

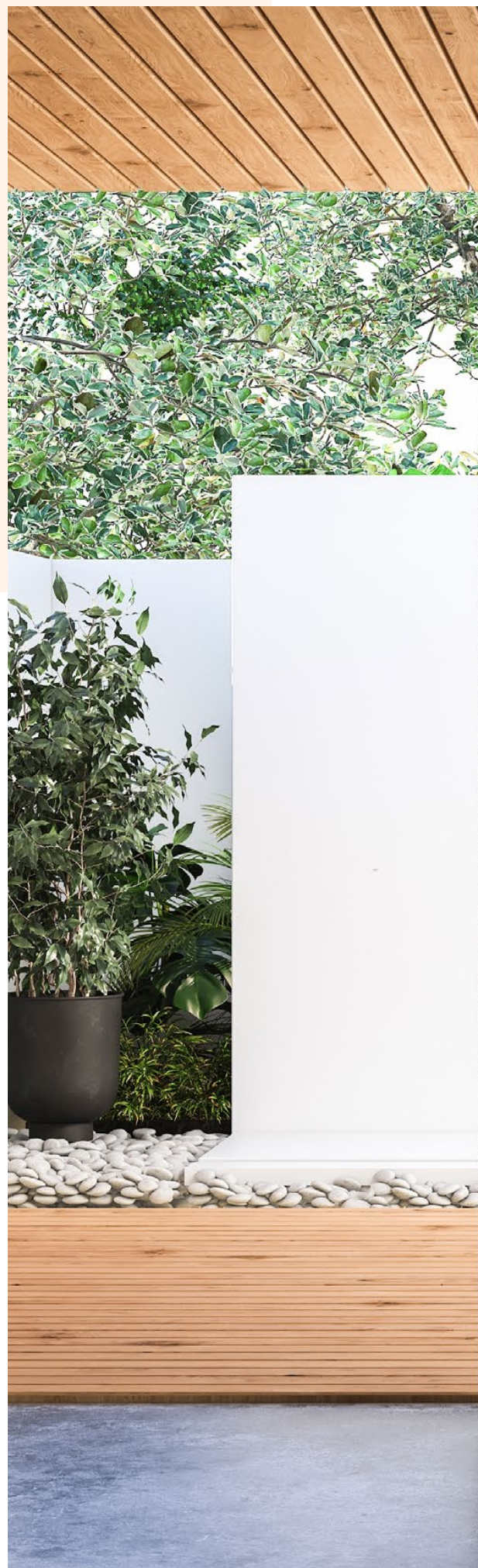


Coverage (Per box) | Pieces (Per box)  
**2.88 sqm** | **4 pcs**

Max. Weight (ACH-4001 - 4006)  
**2.1 kg** (Per Piece) | **11.5 kg** (Per box)

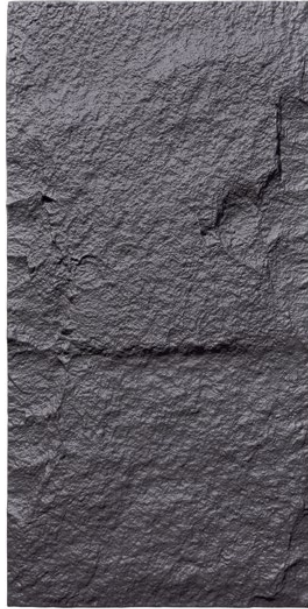
Max. Weight (ACH-4051)  
**3.2 kg** (Per Piece) | **13.0 kg** (Per box)

\* Please allow a  $\pm$  5% tolerance for product size, weight and colour.

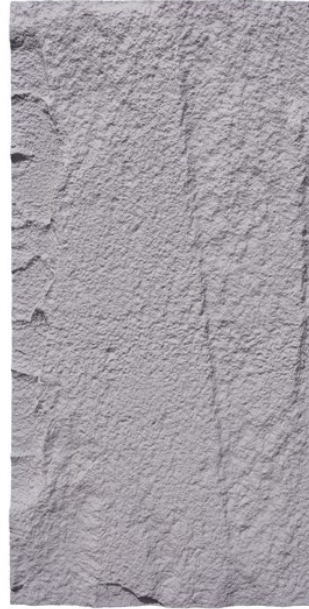


**ACH-4002** | Running Bond





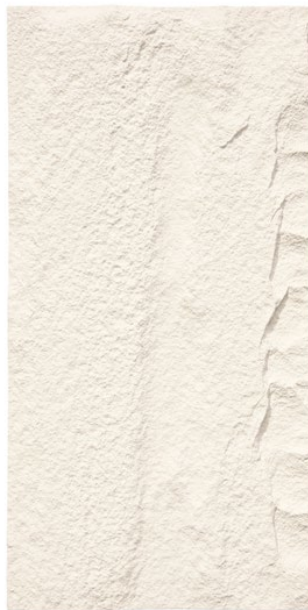
ACH-4001



ACH-4002



ACH-4003



ACH-4004



ACH-4005



ACH-4006



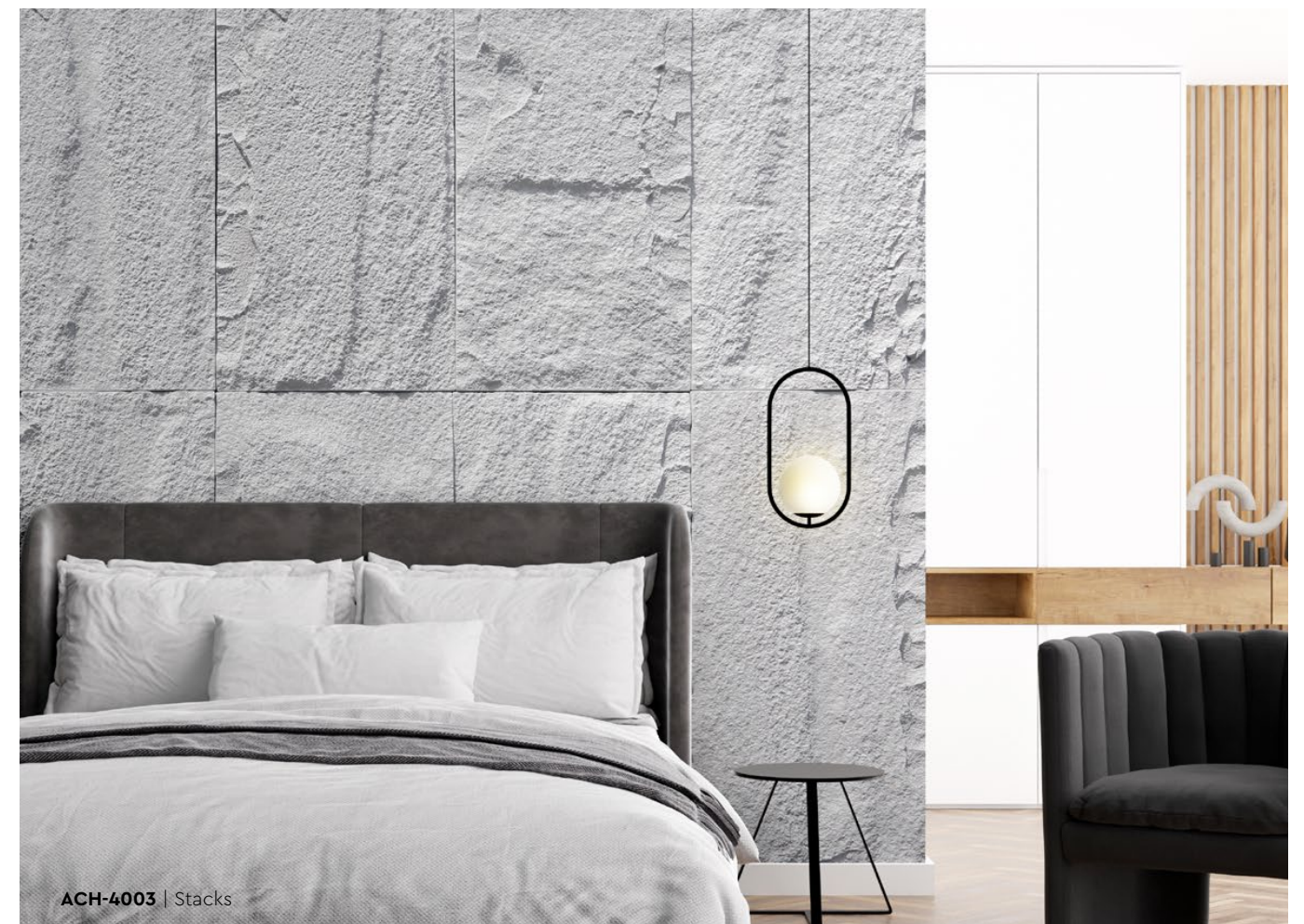
ACH-4051

All color shown are as close to the actual Suzuka® Archistra colors as modern printing techniques permit, nonetheless, there are still color/tone differences.

**We highly recommend seeing actual samples before ordering.**



ACH-4004 | Random

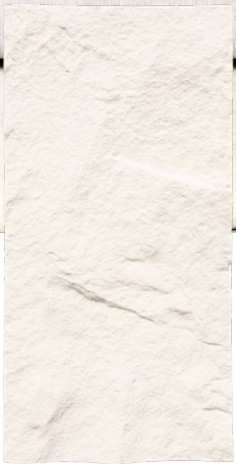


ACH-4003 | Stacks





Combination of **ACH-1004 & ACH-2004** | Running Bond



ACH-1004



ACH-2004

# 10 & 20 series



Combination of **ACH-2005 & ACH-4005** | Running Bond



ACH-2005



ACH-4005

# 20 & 40 series





Combination of **ACH-1001 & ACH-4001** | Random



ACH-1001



ACH-4001

## 10 & 40 *series*



Combination of **ACH-1002 & ACH-2002** | Random



ACH-1002



ACH-2002

## 10 & 20 *series*





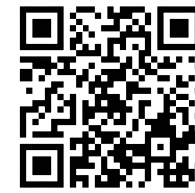
Running Bond



Stacks



Random



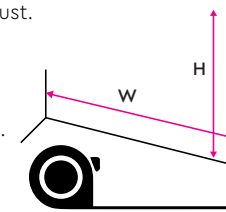
# Installation Instructions

## Step 1 – Surface Preparation

- A** Clean up the surface from dirt or dust.

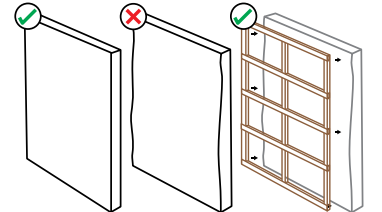
If the scheme coat of the wall is weak, chalking or peeling, we recommend to use the **Wall Sealer Pro** (Page 26).

- B** Measure the dimensions of wall.



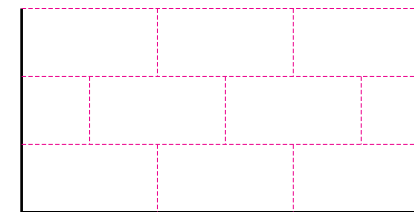
- C** Ensure your wall surface is non-wavy, dry, and solid.

If your surface is too wavy for the panels to be applied in flatly, a wooden frame can be built as a backing for the panels.

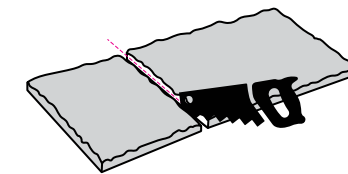


## Step 2 – Layout Planning

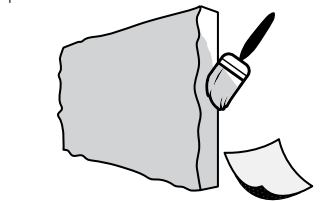
- A** Plan the panel layout.



- B** Some panels may need to be trimmed to fit your wall dimensions.



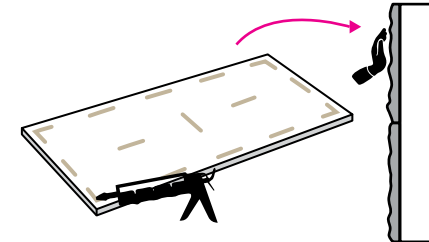
- C** Sand the trimmed part with sand paper and touch up with Archistra paint.



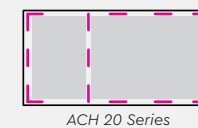
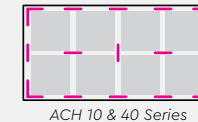
⚠ Ensure the whole part is coated & fully dried.

## Step 3 – Panel Application

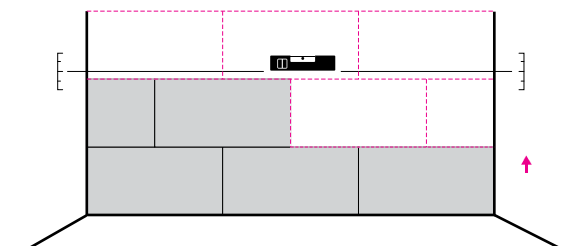
- A** Apply **construction adhesive** on the back of the panel and stick to the wall. Press and hold the panel a few seconds to ensure it is in place.



### Recommended Adhesive Application



- B** Install the panels working from the bottom upwards. The use of a leveler is recommended.



### Recommended Tools



Construction Adhesive

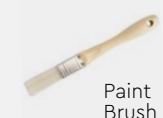


Caulk Gun

Saw



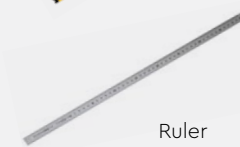
Hand Brush



Paint Brush



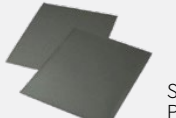
Leveler



Ruler



Measuring Tape



Sand Paper





Combination of **ACH-1001** & **ACH-4001** | Random

## TECHNICAL SPECIFICATIONS

Series	ACH-10	ACH-20	ACH-40
Dimension (cm)	L120 x W60 x T1-4.5	L120 x W60 x T3-9	L120 x W60 x T1-3
Coverage Per Box (sqm)	2.88	2.16	2.88
Pieces Per Box	4	3	4
Weight (kg)			
Max. kg/piece - ACH-10/20/40 (01 - 06)	2.2	2.8	2.1
Max. kg/piece - ACH-10/20/40 (51)	3.3	3.9	3.2
Max. kg/box - ACH-10/20/40 (01 - 06)	11.5	11.5	11.5
Max. kg/box - ACH-10/20/40 (51)	13.3	11.8	13.0

\* Data of weight presented is the maximum weight for every piece & box respectively.  
\* Please allow a ± 5% tolerance for panel size, weight and colour.  
\* Product may vary in colour due to lighting conditions and printing. We suggest you examine product samples before ordering.

**SUZUKA®**  
**WALL SEALER PRO**

“ Make your wall finishes last longer! ”

Packing Size: 

1L

5L

20L

### Superior primer for concrete, skimmed or masonry surfaces.

This sealer that has good substrate penetration abilities to increase adhesion of product to prevent chalking or peeling off.

It has excellent alkaline resistance properties that can prevent efflorescence. It is an ideal base coat for any SUZUKA® or any wall finish products.

Coverage	Drying Time (hour)	
6.5 - 8.5 m²/l/coat	Surface Dry :	1
	Hard Dry :	5
	Recoating :	5
	Substrate Temperature:	23°C - 26°C

- Features:
- Excellent alkaline resistance to prevent efflorescence.
  - Good for new walls and repainting.
  - Prevents skim coat from chalking & peeling off.
  - Extremely good penetration.
  - Excellent adhesion.
  - Exterior and interior use.
  - Applicable with brush, roller or spray gun.

- Suitable for:
- Masonry wall
  - Brickwork
  - Plaster
  - Skimmed Coat
  - Asbestos free substrate

Airless Spray		
Nozzle	Spray Angle Degree	Pressure
1.8 - 2.0 mm	65° - 80°	210 psi/150kg/cm²