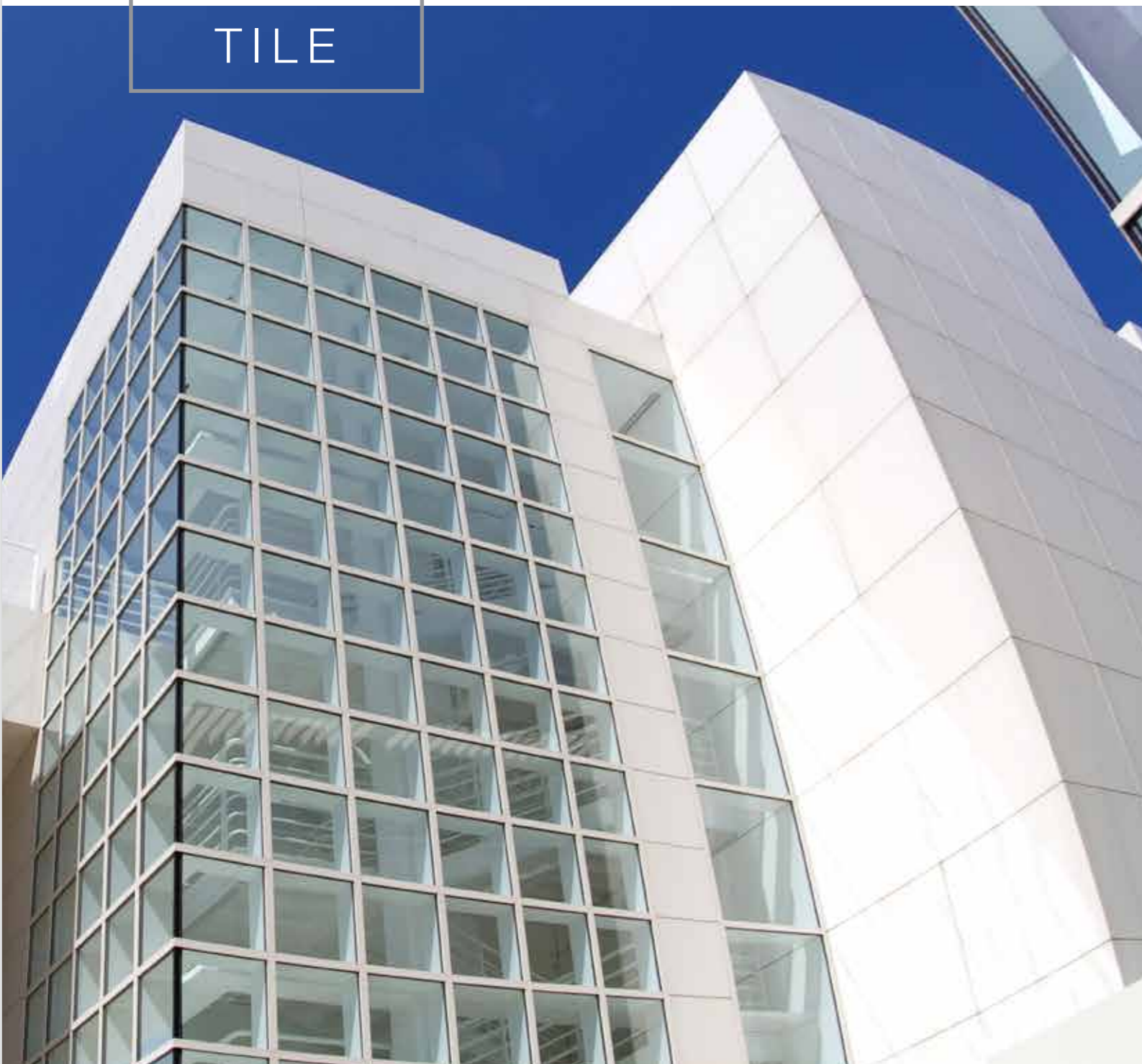


JUMBO TILE



SUZUKA TEXTURE COATING

TAIWAN • MALAYSIA • THAILAND

SUZUKACOAT (M) SDN BHD

Lot 6492, Jln Haji Abdul Manan, Off Jalan Meru, 41050, Klang,
Selangor Darul Ehsan, Malaysia.

T +603-3291 0722
F +603-3290 3463
W www.suzuka.com.my



JUMBO TILE



SPECIFICATION & METHOD STATEMENT

OUTLINE OF APPLICATION

| Process | Material | Mixing (Weight Ratio) | Number Of Coat | Interval Time To Proceed Next Process (Hrs) | Consumption | Tools Of Application | |
|---------|---------------------|---|----------------|---|-------------|-------------------------------|-----------------|
| 1 | Surface Preparation | Surface shall be dry and free from dirt, oil, grease and foreign matters. Surface unevenness, crack and pin hole shall be treated with cement filler. | | | | | |
| 2 | Under Coating | EM Sealer : Water | 100 : 0-2 | 1 | 3 | 0.15 - 0.20ltr/m ² | Roller or Brush |
| 3 | Texture Coating | Jumbo Tile : Water | 100 : 0-5 | 1 | 24 | 1.0 - 1.6kg/m ² | Spray Gun |
| 4 | Top Coating | Acrylic Emulsion : Water | 100 : 0-2 | 2 | - | 0.32 - 0.48ltr/m ² | Roller or Brush |

JUMBO TILE



JUMBO-HEAD CUT WITH PU COATING (L)



JUMBO-HEAD CUT (L)



JUMBO-HEAD CUT (L)



JUMBO-HEAD CUT (M)



JUMBO-HEAD CUT (S)



JUMBO-NORMAL (L)



JUMBO-NORMAL (M)



JUMBO-NORMAL (S)